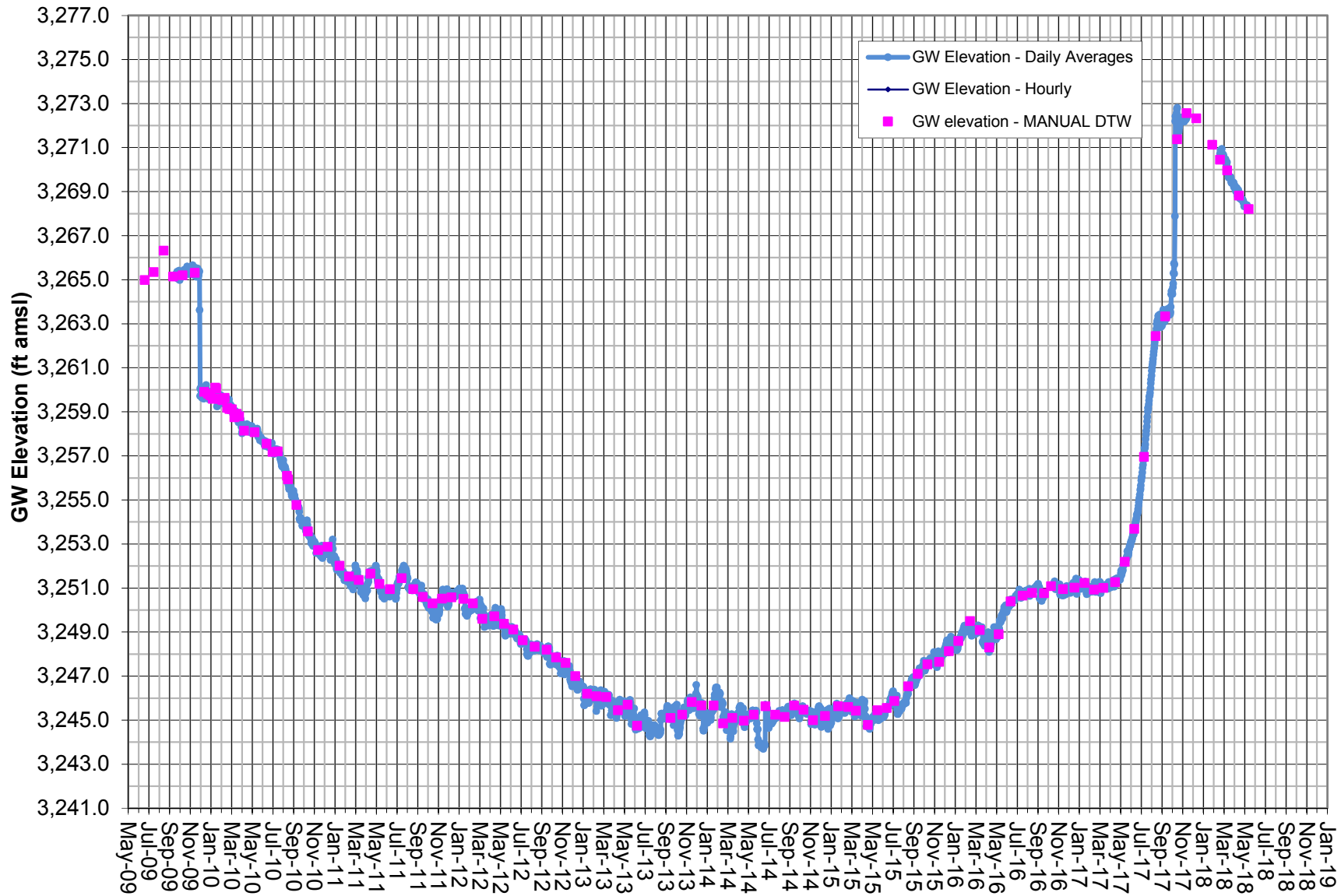
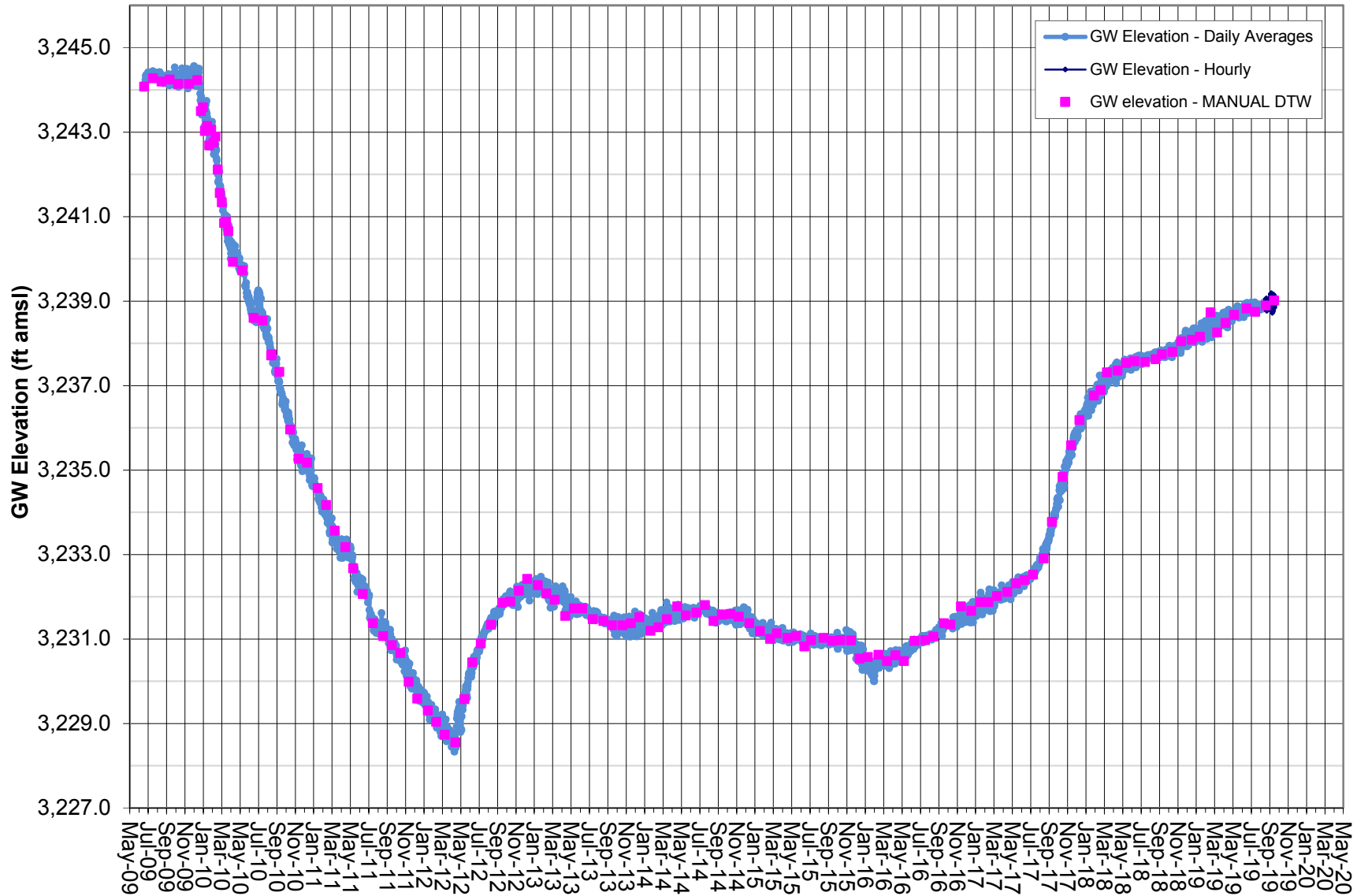


GROUNDWATER ELEVATION DATA - Transducer RV030 - Cal Pumice Well



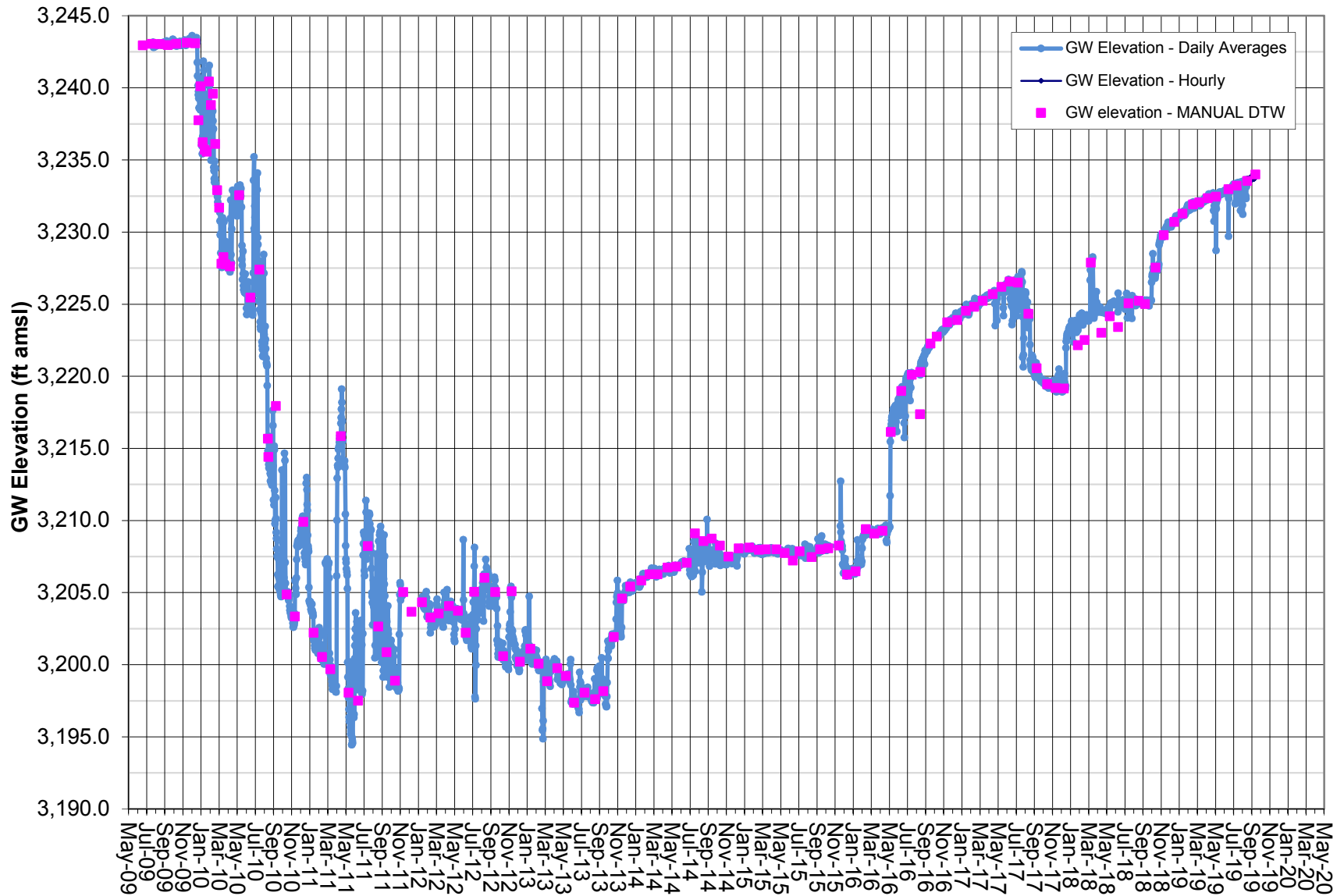
Note: Transducer data adjusted by BaroTroll and correlated to Manual DTW.
 COC initiated Hay Ranch Project pumping on 12/25/09.
 Transducer removed Dec. 2017, as approved by ICWD. Well measured to be Dry to about 250' in June 2018.

GROUNDWATER ELEVATION DATA - Transducer RV060 - HR 1A Well



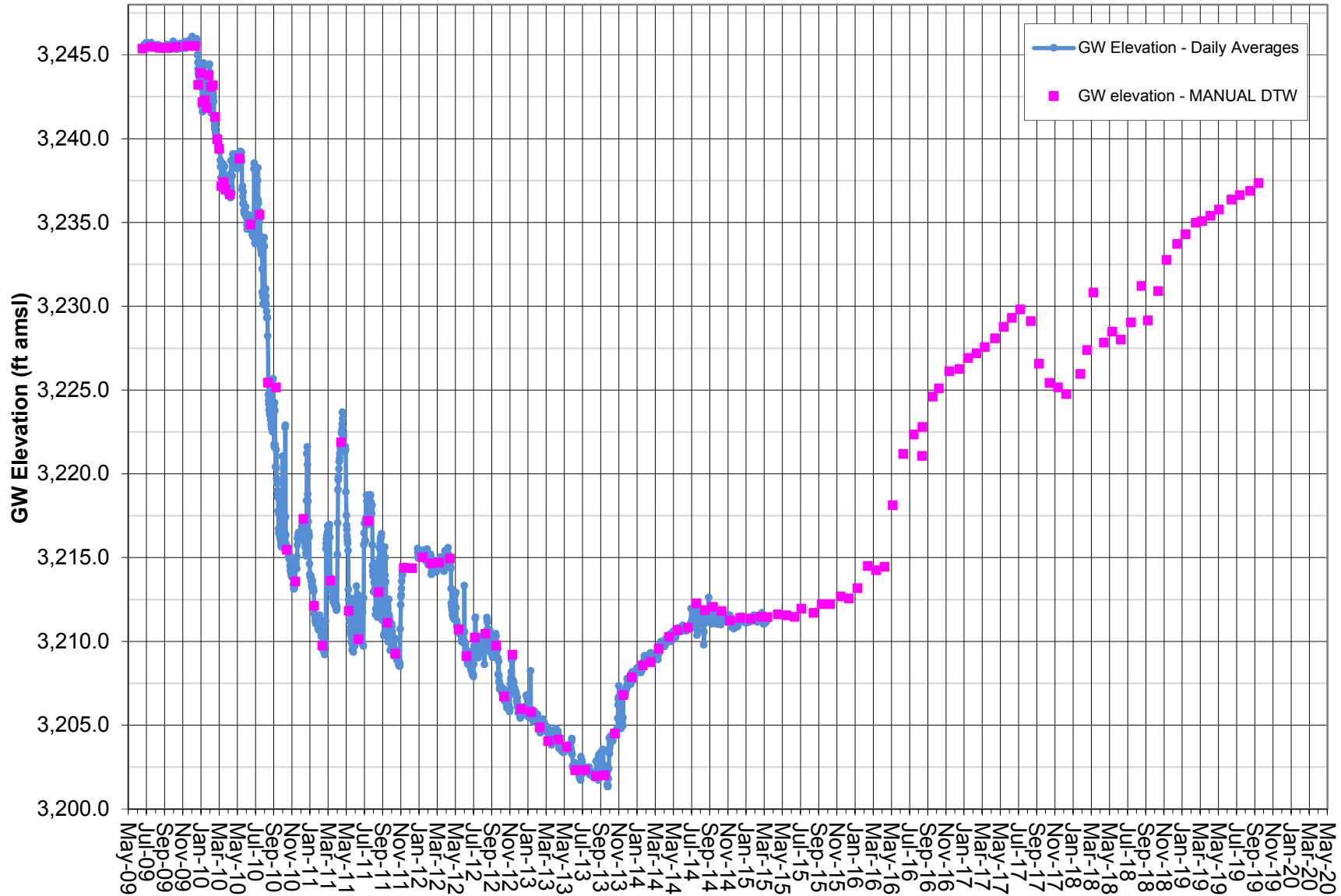
Note: Screened interval 170-260 feet.
 Coso Operating Co. initiated Hay Ranch Project pumping on 12/25/09.
 HR 1A data gaps due to transducer malfunction.

GROUNDWATER ELEVATION DATA - Transducer RV061 - HR 1B Well



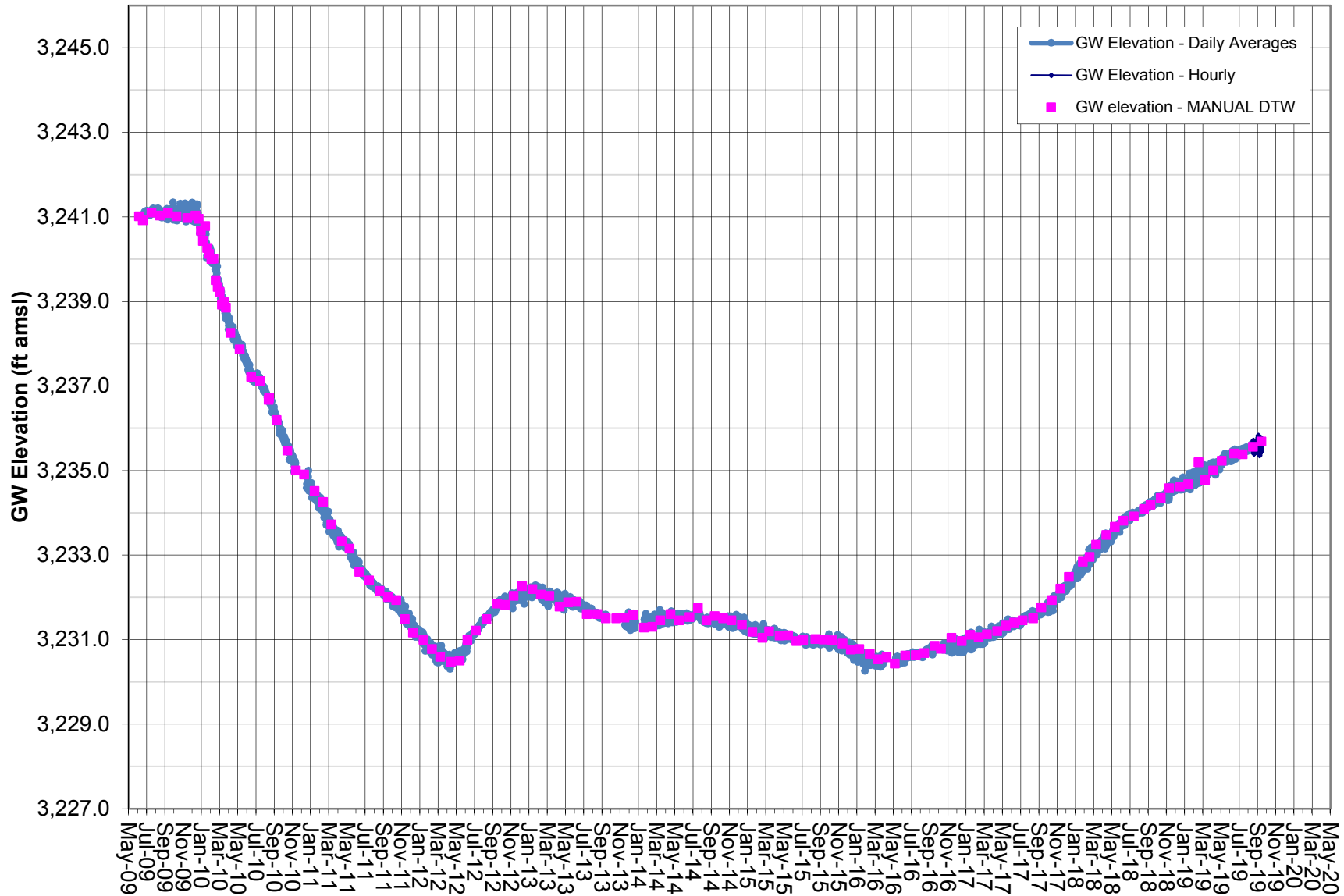
Note: Transducer data (absolute pressure) adjusted by data logged from BaroTroll and correlated to Manual DTW measurements.
 Screened interval 490-540 feet.

GROUNDWATER ELEVATION DATA - Transducer RV062 - HR 1C Well



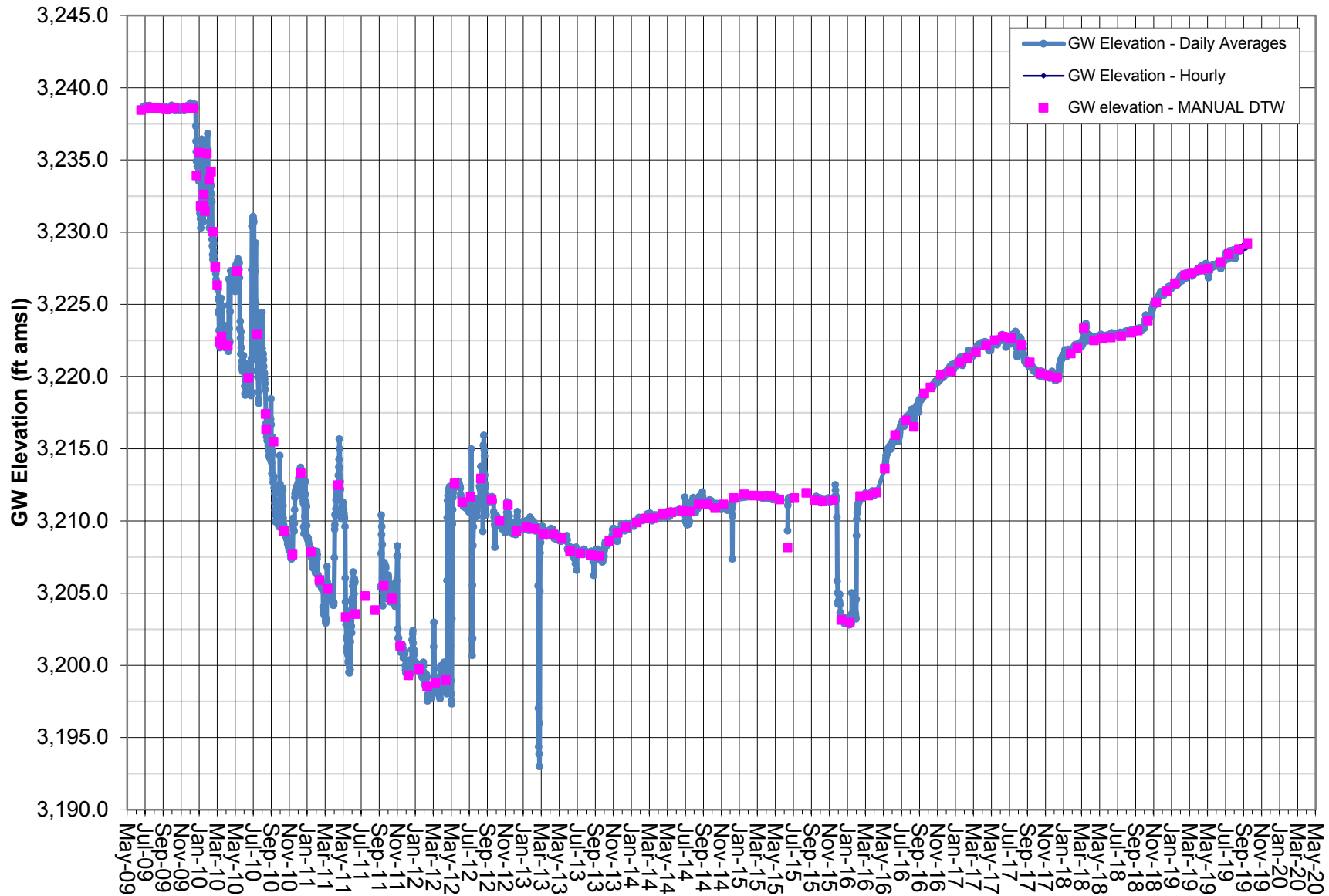
Note: Screened interval 340-405 feet.
HR 1C transducer removed in 2015, as approved by ICWD.

GROUNDWATER ELEVATION DATA - Transducer RV080 - HR 2A Well



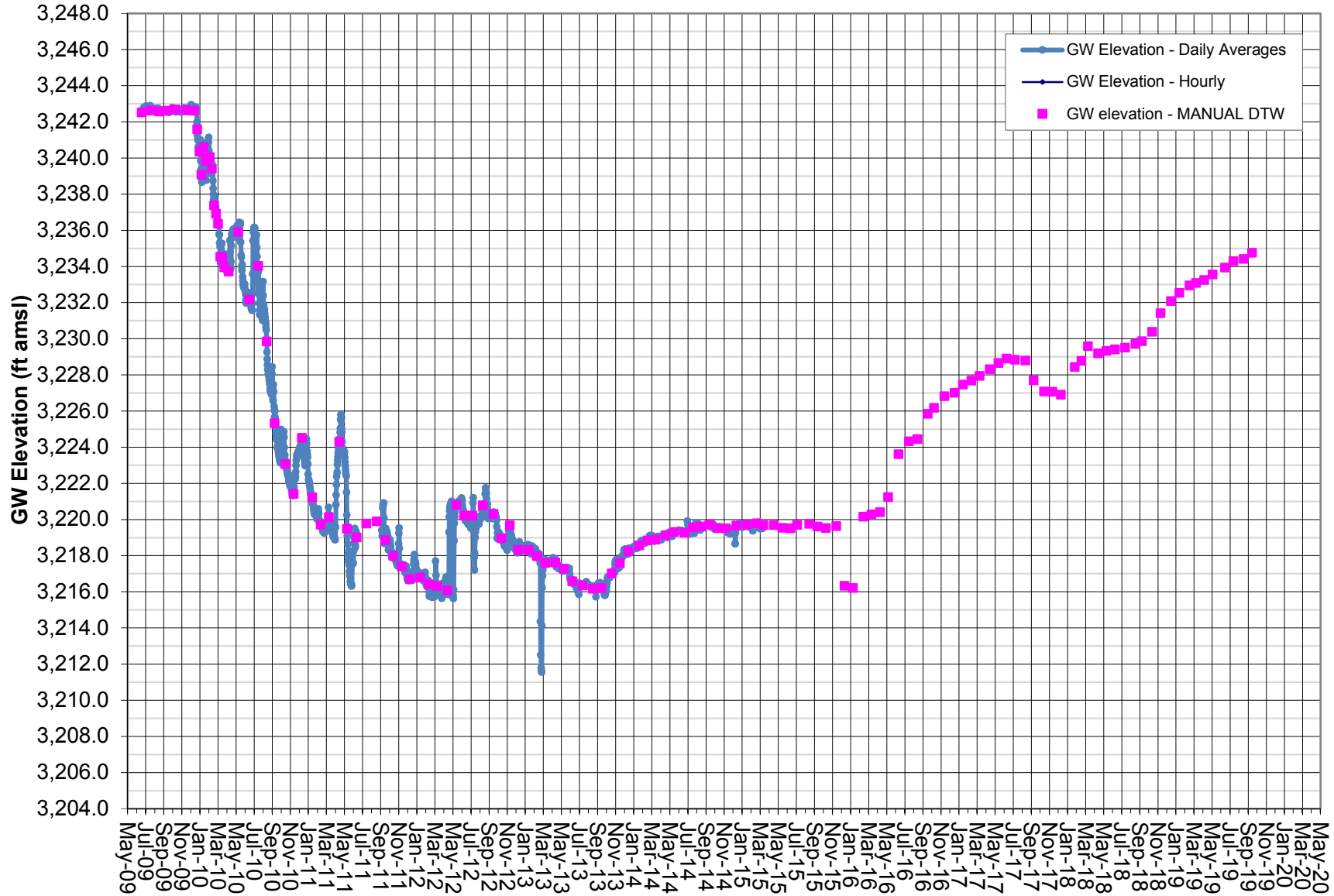
Note: Screened interval 180-300 feet.
Coso Operating Co. initiated Hay Ranch Project pumping on 12/25/09.

GROUNDWATER ELEVATION DATA - Transducer RV081 - HR 2B Well



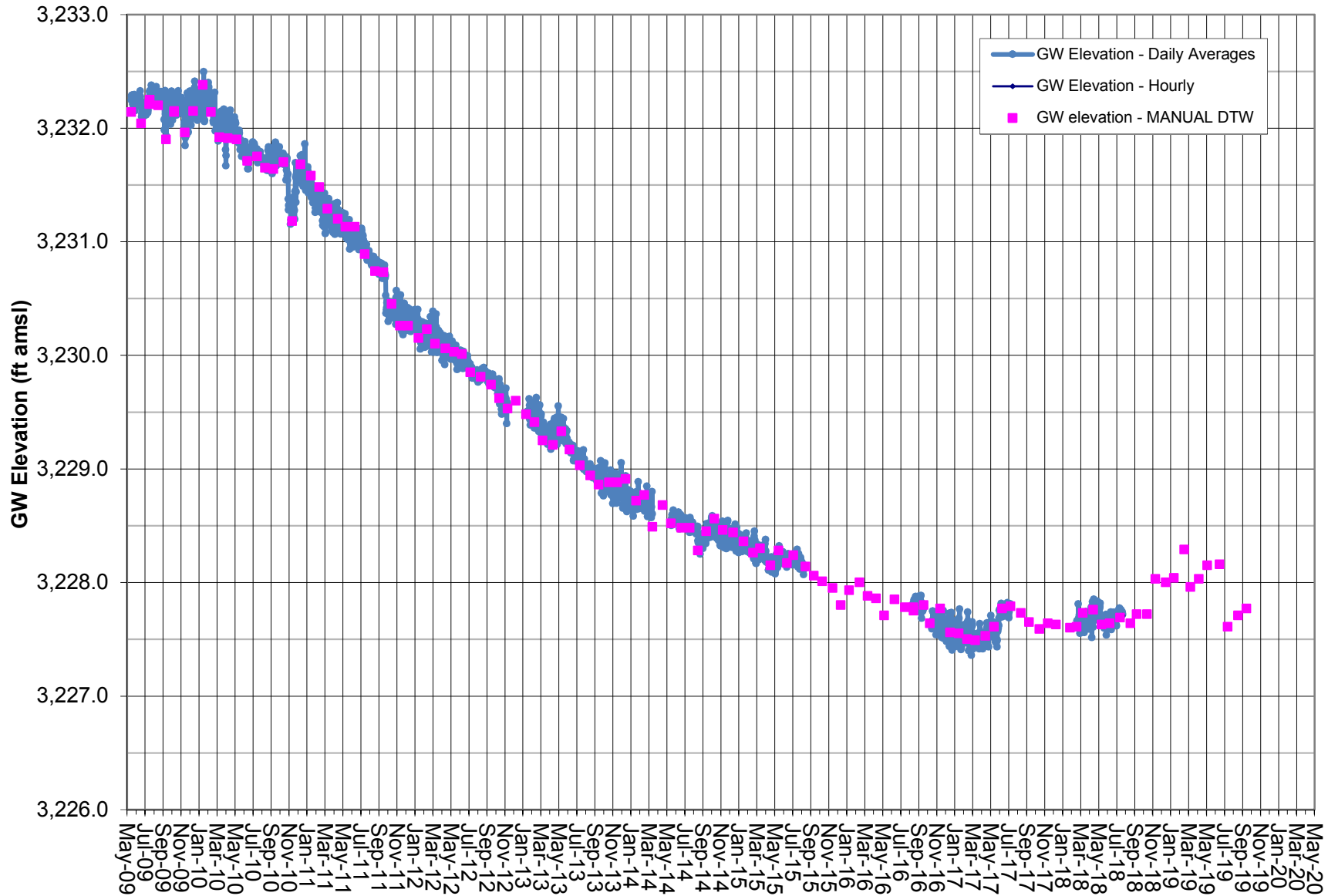
Note: Screened interval 519-584 feet.
Coso Operating Co. initiated Hay Ranch Project pumping on 12/25/09.

GROUNDWATER ELEVATION DATA - Transducer RV082 - HR 2C Well



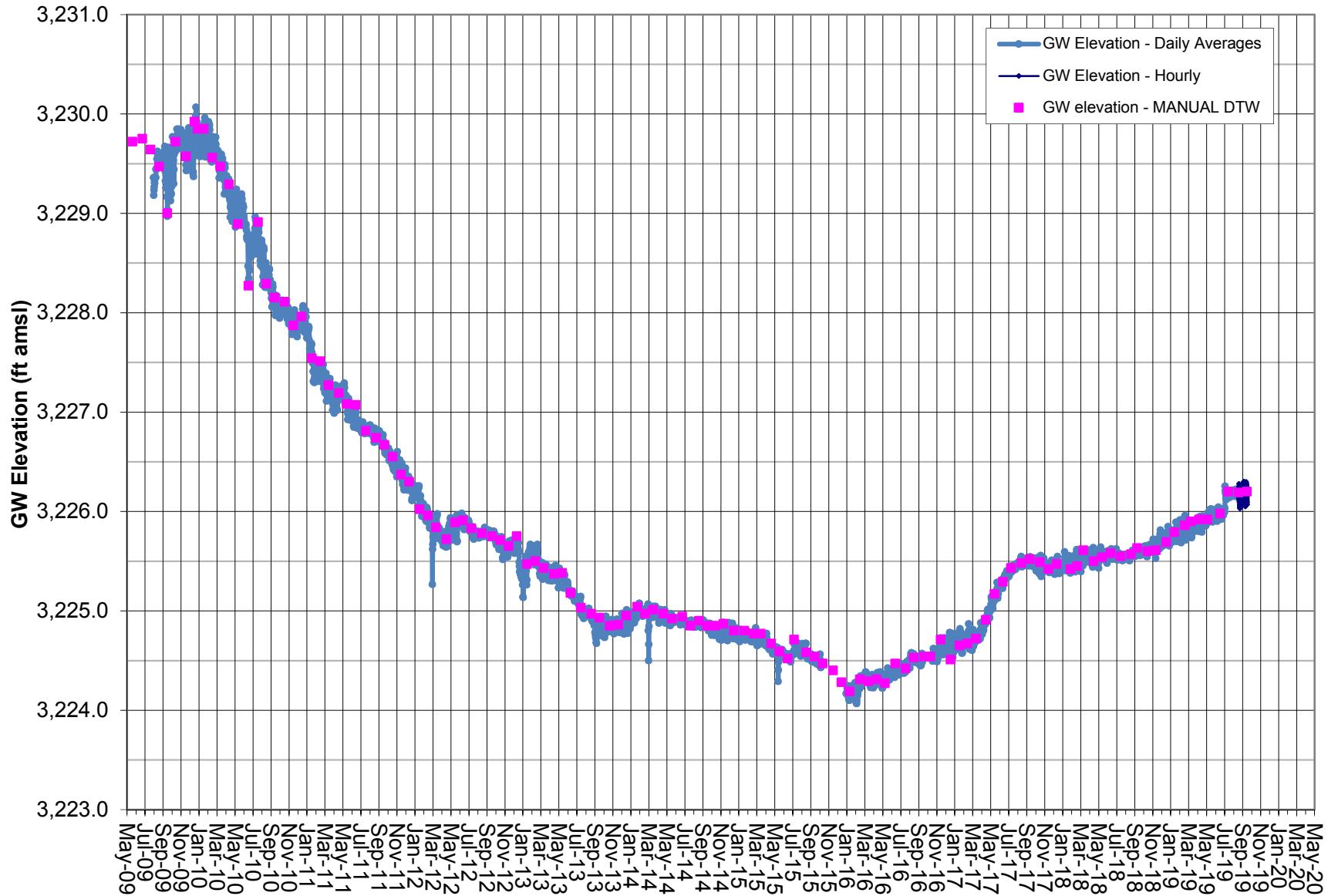
Note: Screened interval 370-420 feet.
Pressure Transducer removed in 2015, as approved by ICWD.

GROUNDWATER ELEVATION DATA - Transducer RV090 - Coso Junction Ranch Well



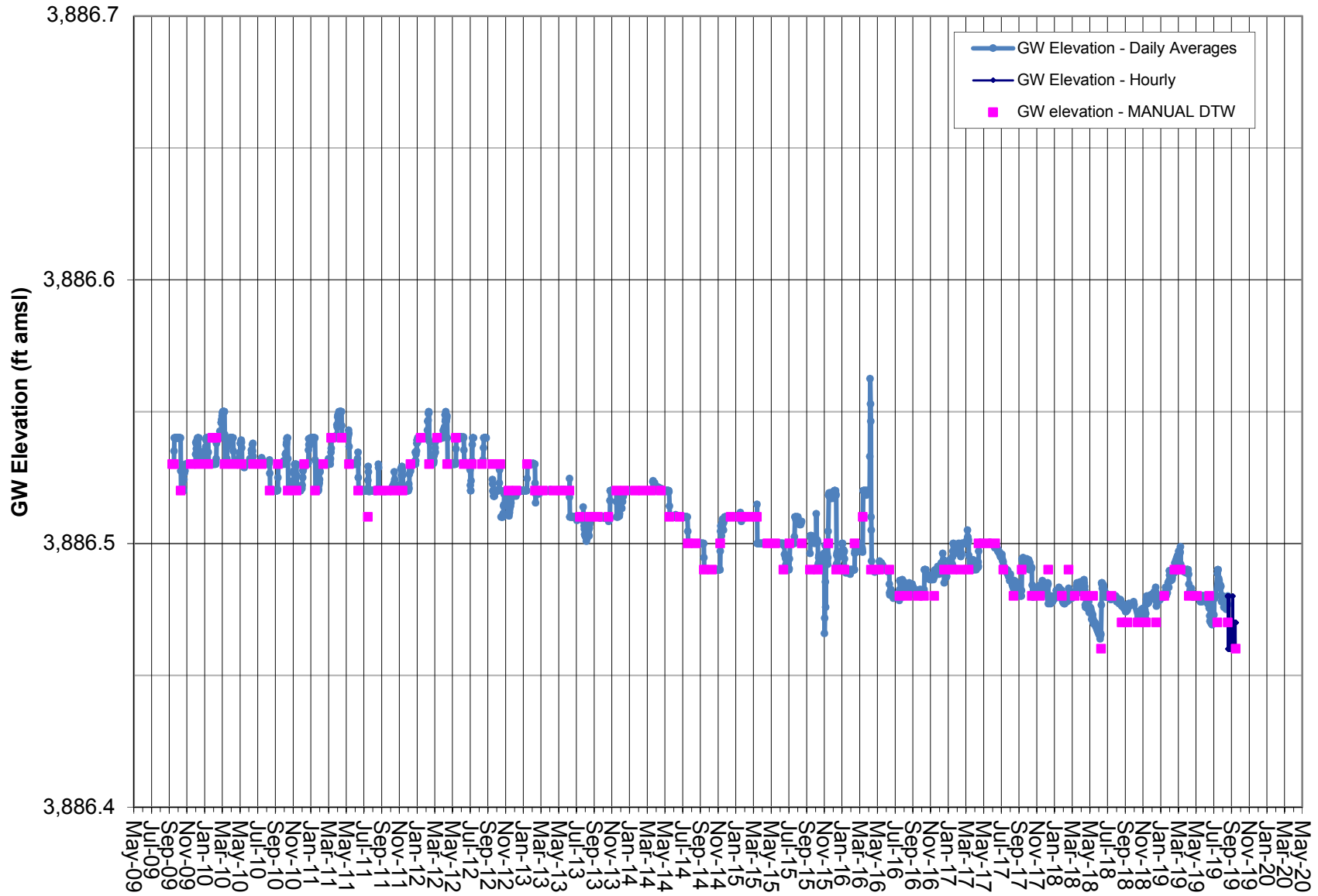
Note: Transducer data (absolute pressure) adjusted by data logged from BaroTroll and correlated to Manual DTW measurements.
 COC initiated Hay Ranch Project pumping on 12/25/09.
 Data gaps due to approved Pressure Transducer removal.

GROUNDWATER ELEVATION DATA - Transducer RV100- Coso Junction Store#1 Well



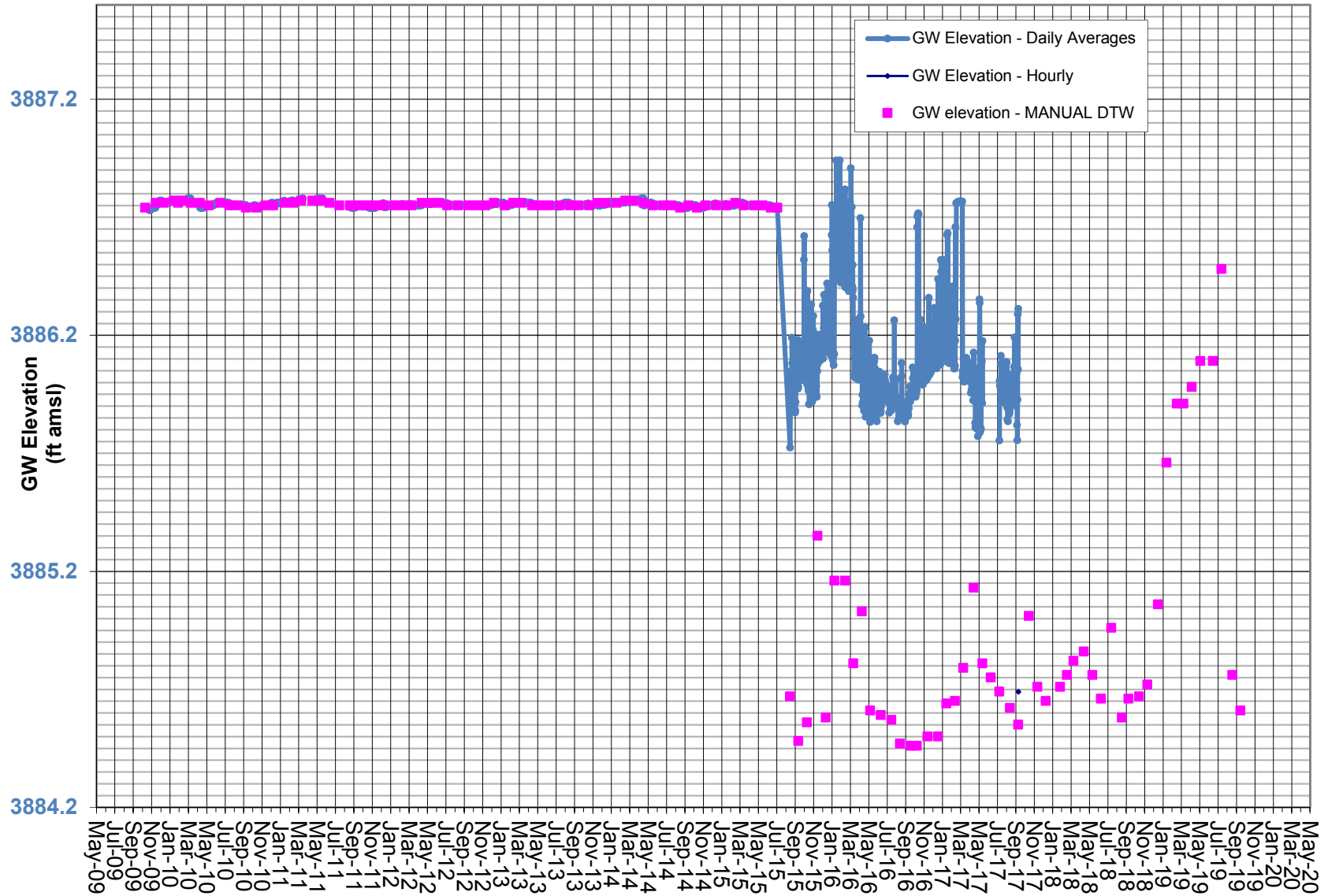
Note: Transducer data adjusted by data logged from BaroTroll and correlated to Manual DTW.
 Data gap from Oct.-Dec. due to pressure transducer malfunction.
 Coso Operating Co. initiated Hay Ranch Project pumping on 12/25/09.

GROUNDWATER ELEVATION DATA - Transducer RV110 - Davis Ranch North Well



Note: Vented transducer data correlated to Manual DTW measurements.
 DTW measured to .01 foot; GWE calculated using approximate surface elevation.
 Coso Operating Co. initiated Hay Ranch Project pumping on 12/25/09.

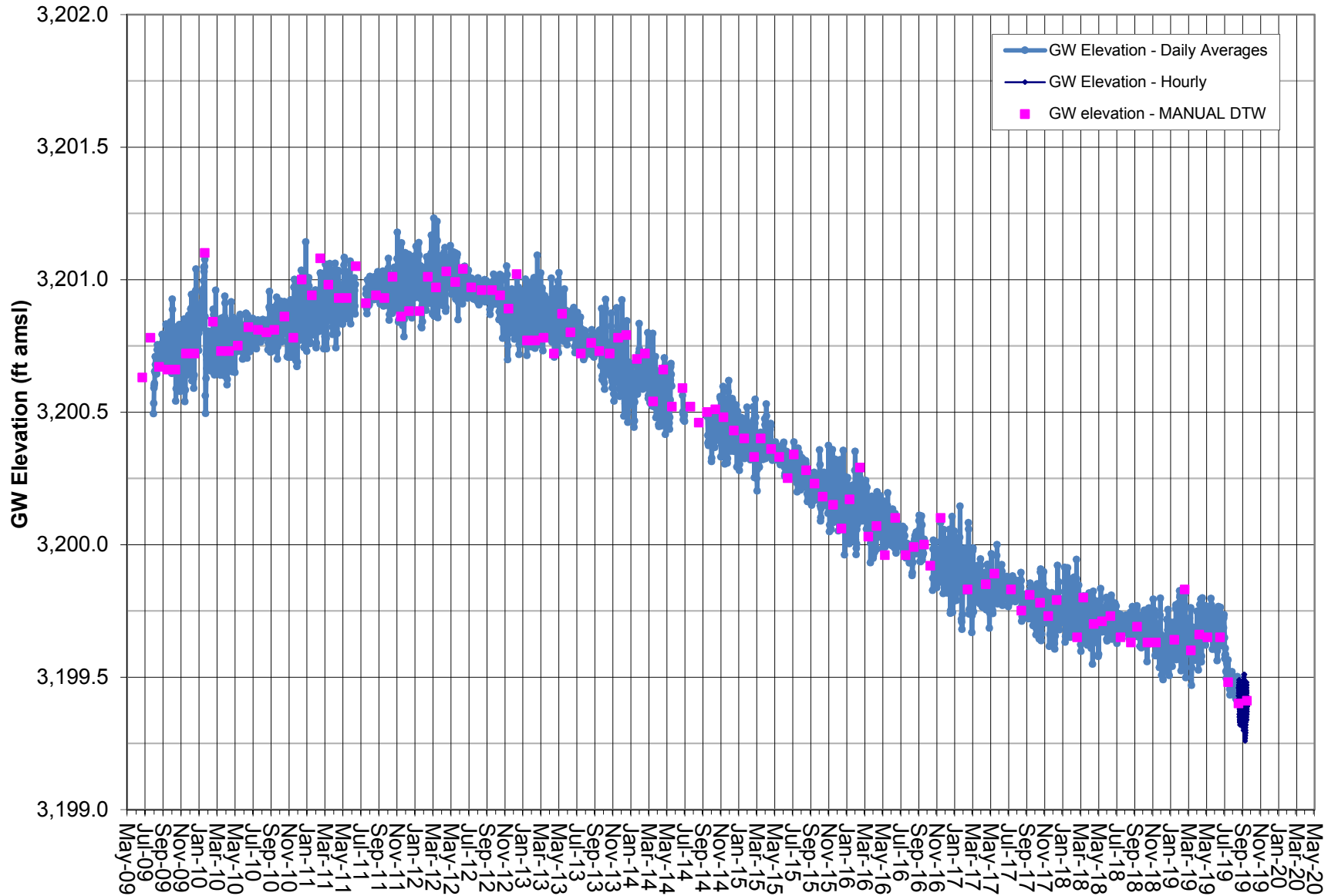
GROUNDWATER ELEVATION DATA - Transducer RV111 - Davis Ranch South Well



Note: Transducer data correlated to Manual DTW measurements.

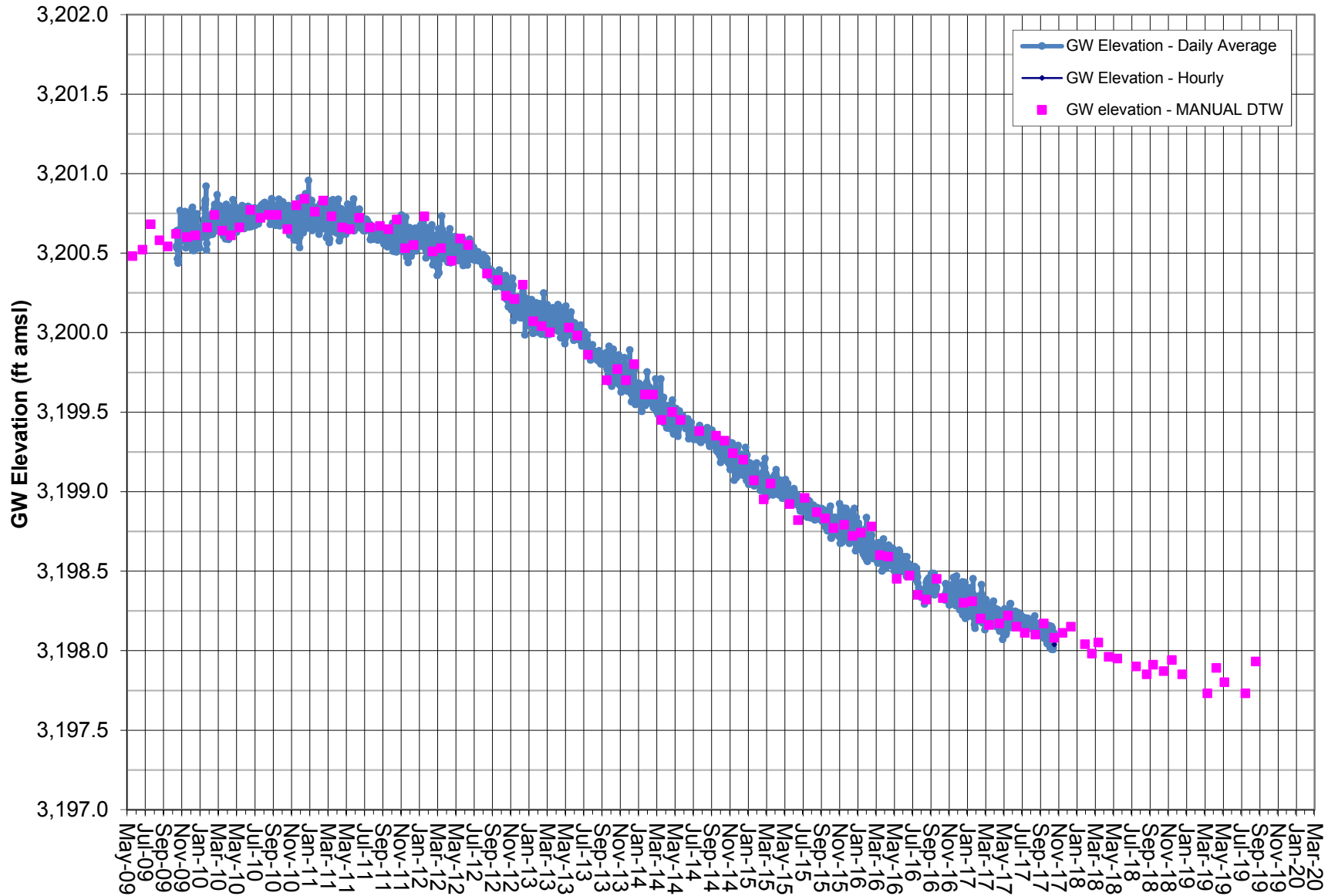
Solar water supply pump installed in DR South in July 2015, which affects the accuracy of DTW correlation. Transducer removed 10/18/17.

GROUNDWATER ELEVATION DATA - Transducer RV120 - Red Hill Well



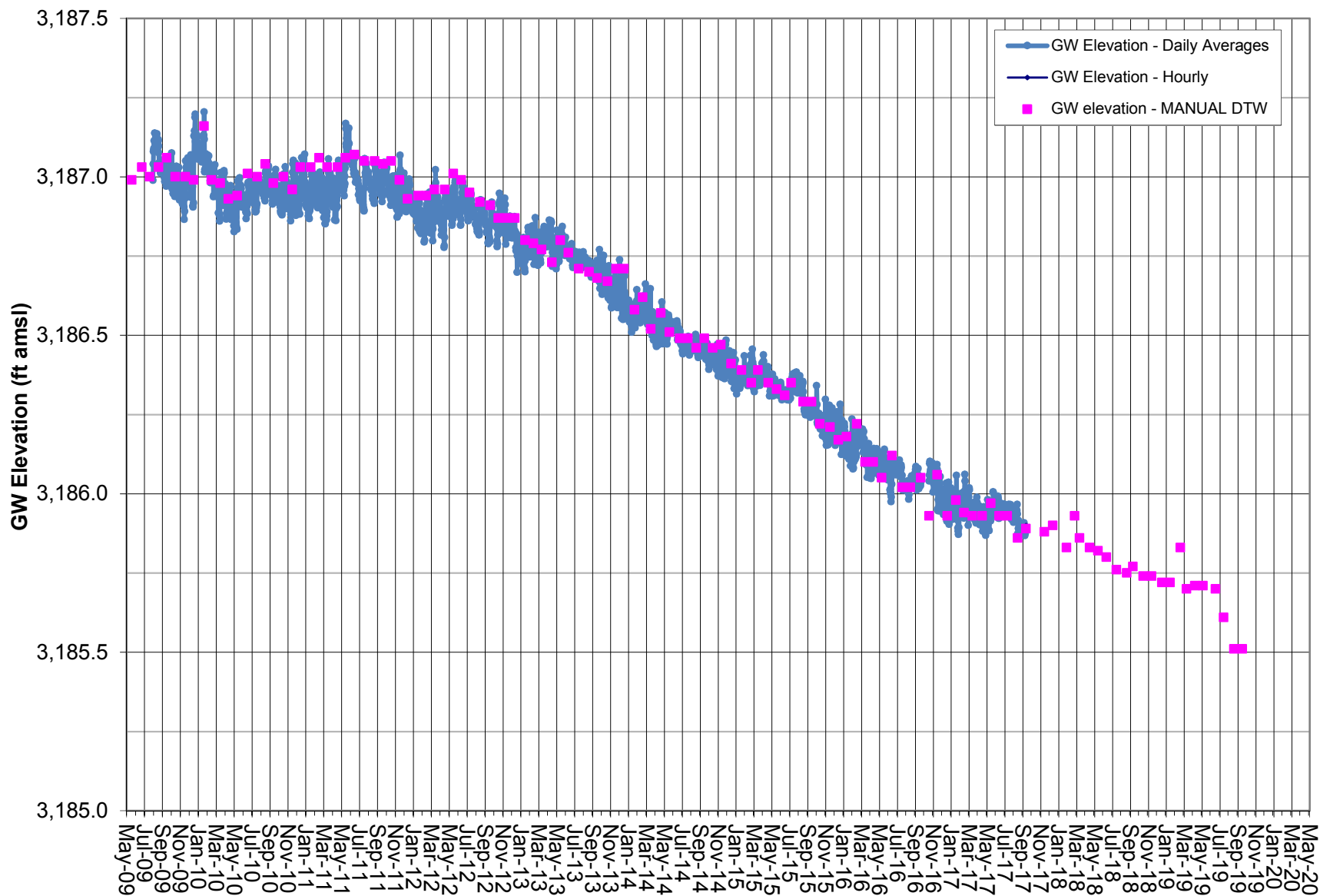
Note: Red Hill data gap in 2011 and 2014 due to transducer malfunction. Well inaccessible in December 2018.
Coso Operating Co. initiated Hay Ranch Project pumping on 12/25/09.

GROUNDWATER ELEVATION DATA - Transducer RV140 - Lego Well



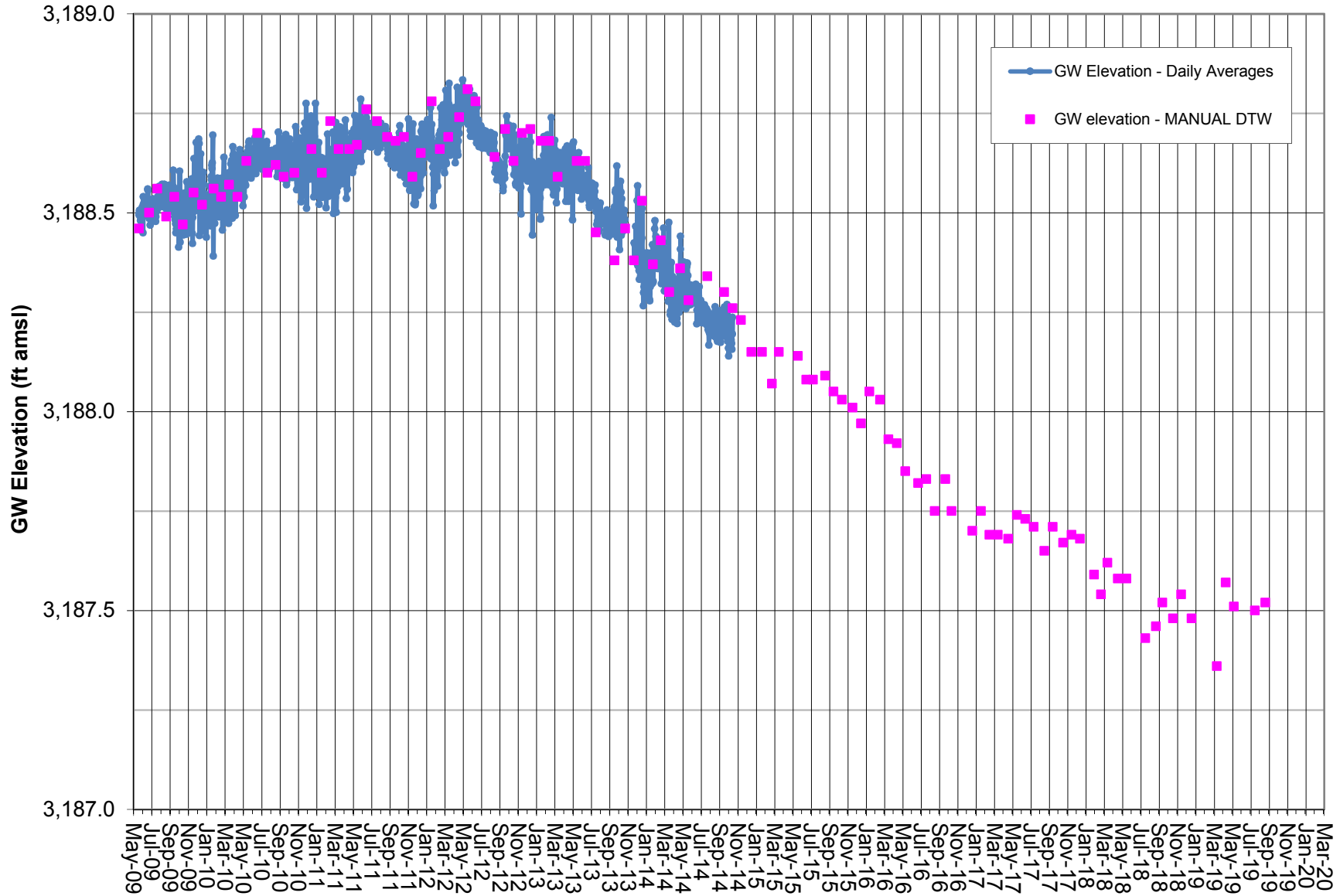
Note: Transducer data adjusted by BaroTroll and correlated to Manual DTW .
Coso Operating Co. initiated Hay Ranch Project pumping on 12/25/09. Transducer removed 11/15/17.

GROUNDWATER ELEVATION DATA - Transducer RV150 - Cinder Road Well



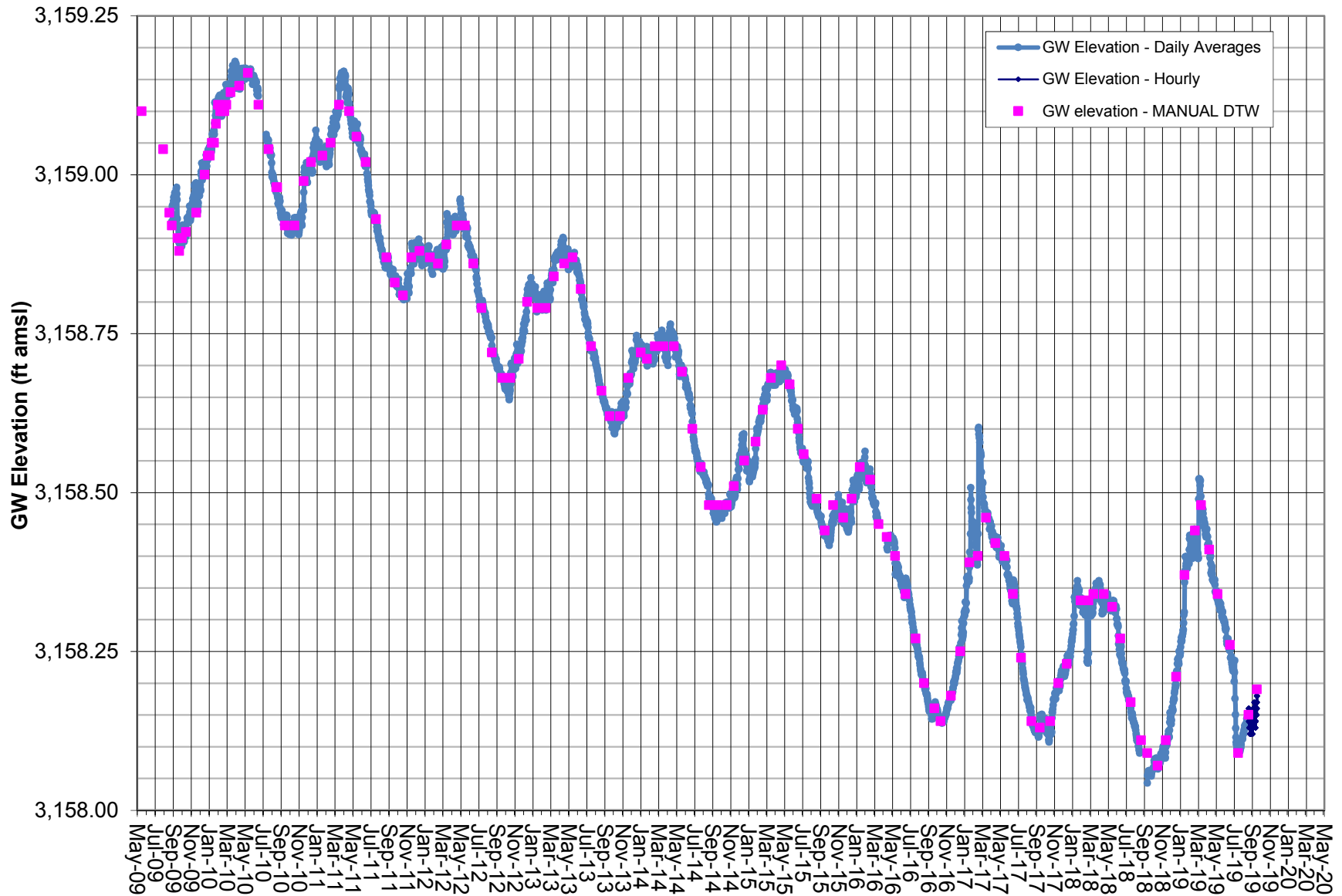
Note: Transducer data (absolute pressure) adjusted by data logged from BaroTroll and correlated to Manual DTW measurements.
 Well damaged and transducer missing on Oct. 2017.
 Coso Operating Co. initiated Hay Ranch Project pumping on 12/25/09.

GROUNDWATER ELEVATION DATA - Transducer RV160 - 18-28 GTH Well



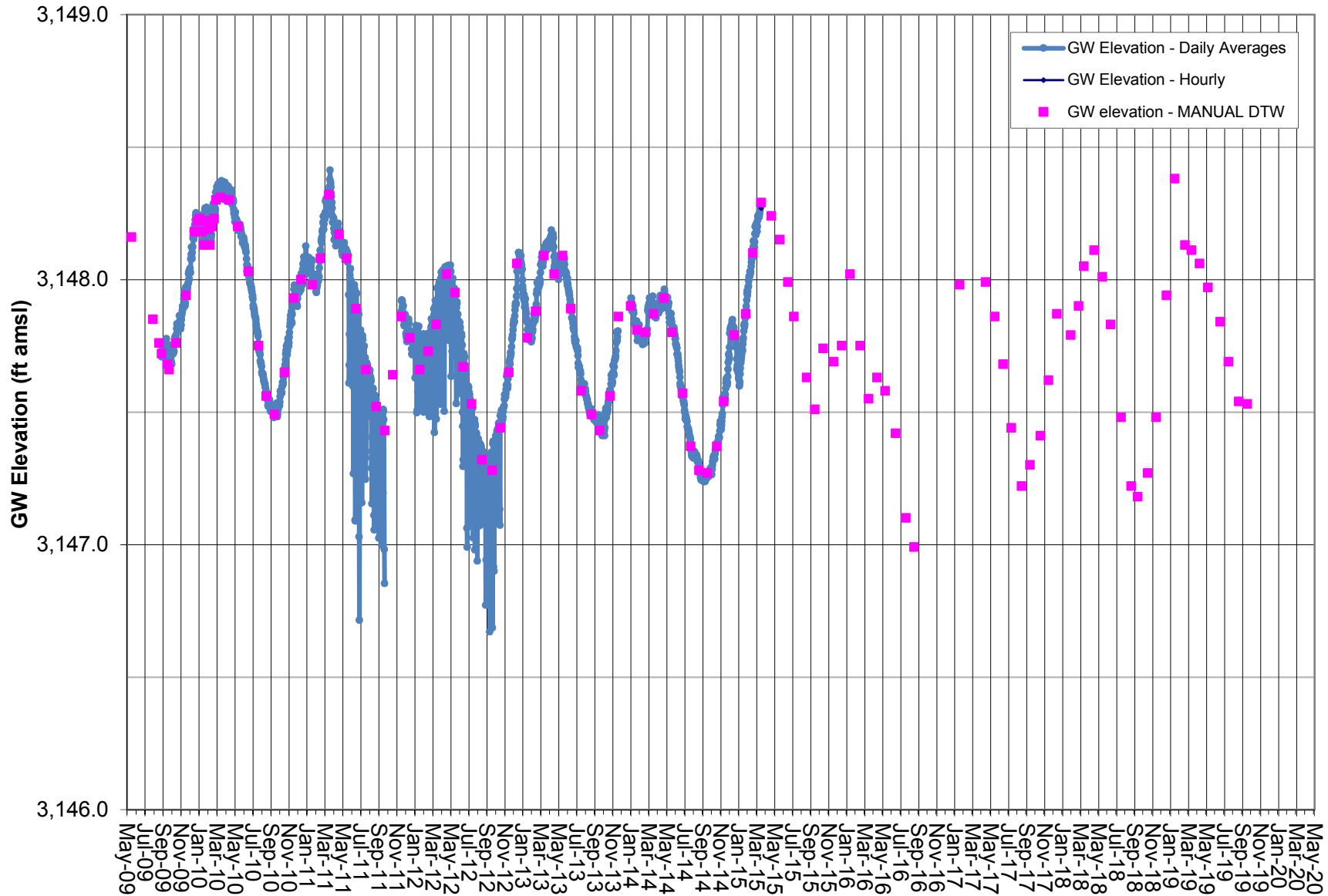
Note:
Pressure Transducer removed in 2015 as approved by ICWD.

GROUNDWATER ELEVATION DATA - Transducer RV180 - Little Lake Ranch North Well

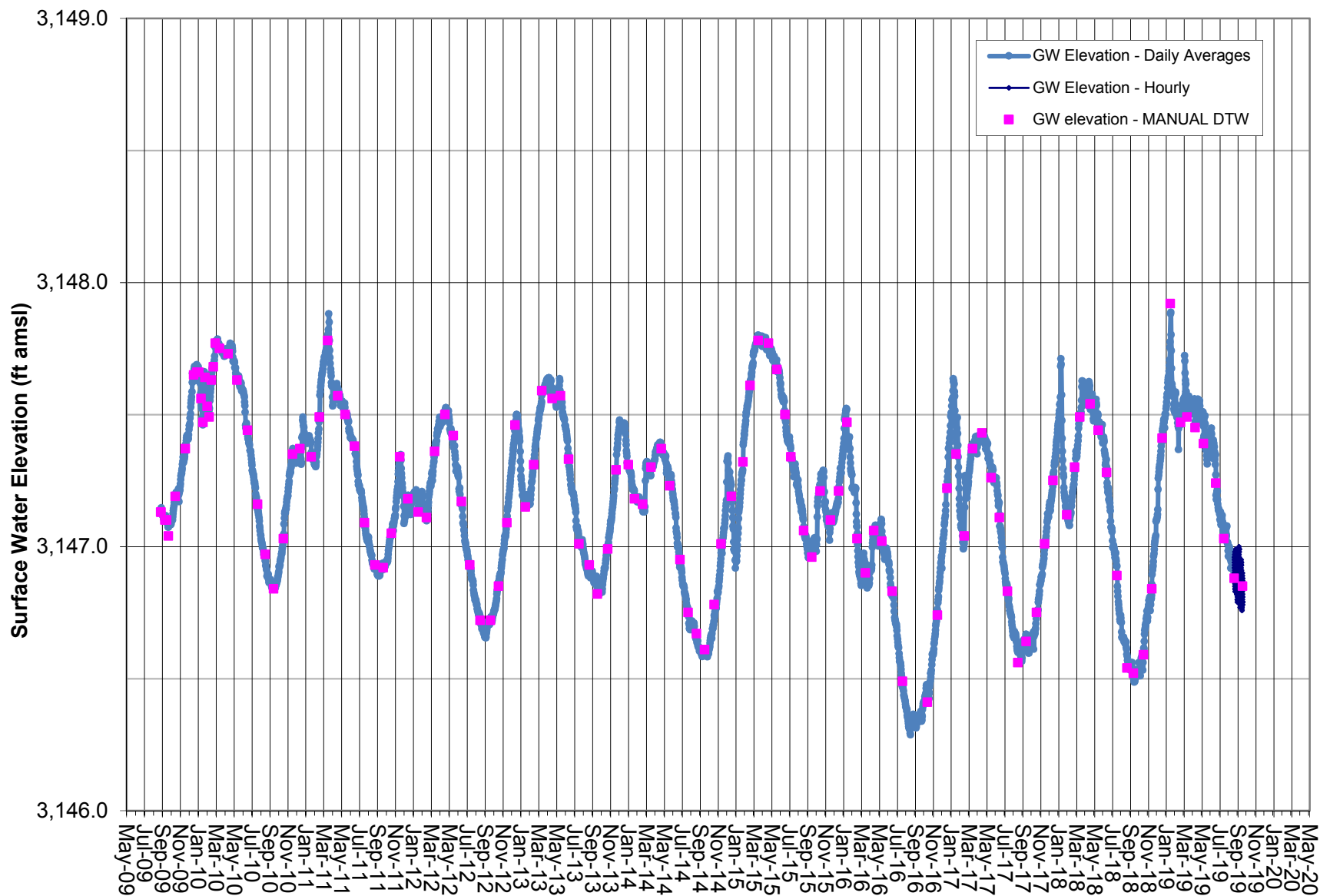


Note: Vented transducer data correlated to Manual DTW measurements.
 Coso Operating Co. initiated Hay Ranch Project pumping on 12/25/09.
 Transducer replaced on 9/20/18.

GROUNDWATER ELEVATION DATA - Transducer RV210 - Little Lake Ranch Dock Well

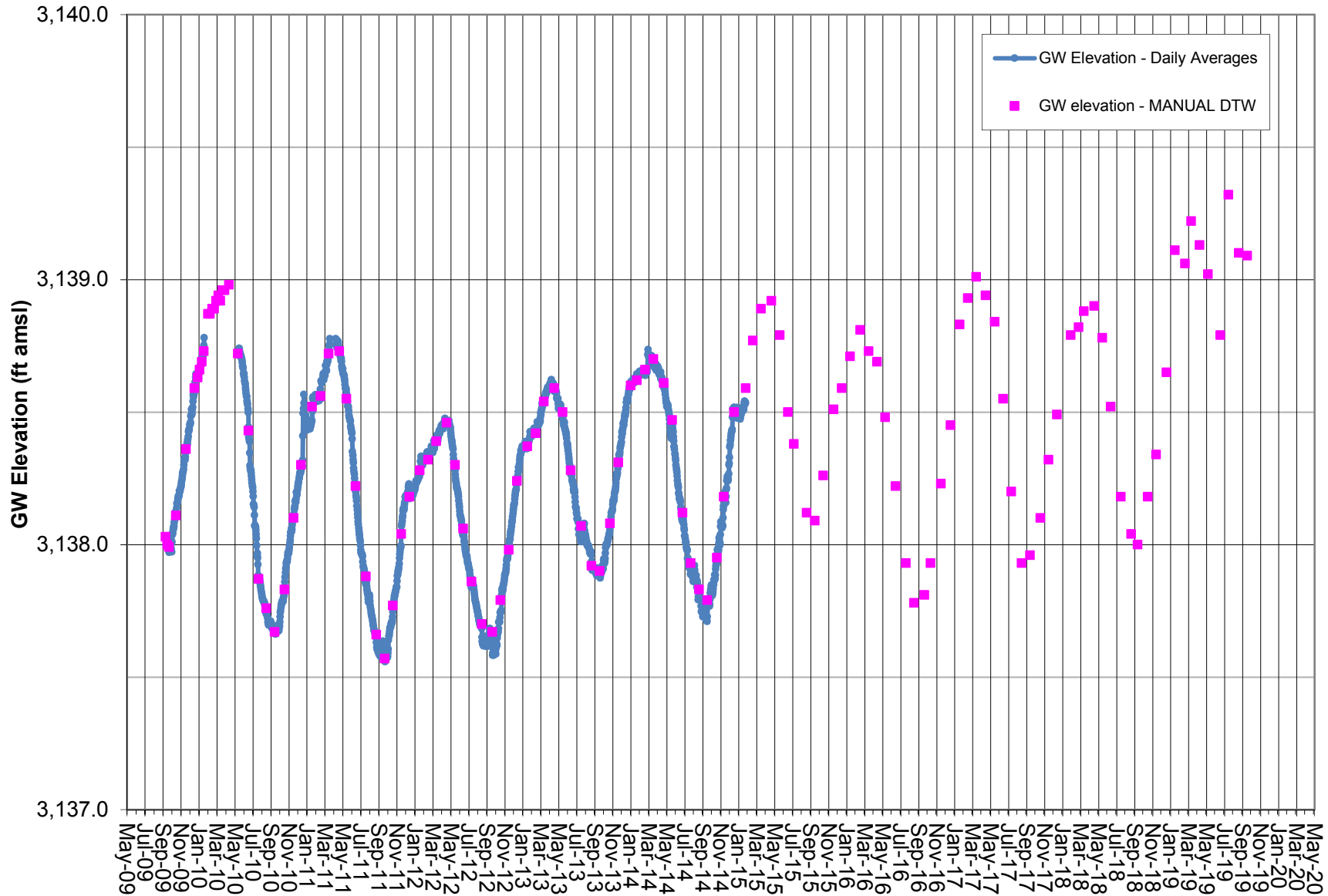


SURFACE WATER ELEVATION DATA - Transducer RV220 - Little Lake Ranch Stilling Well (Lake Surface)



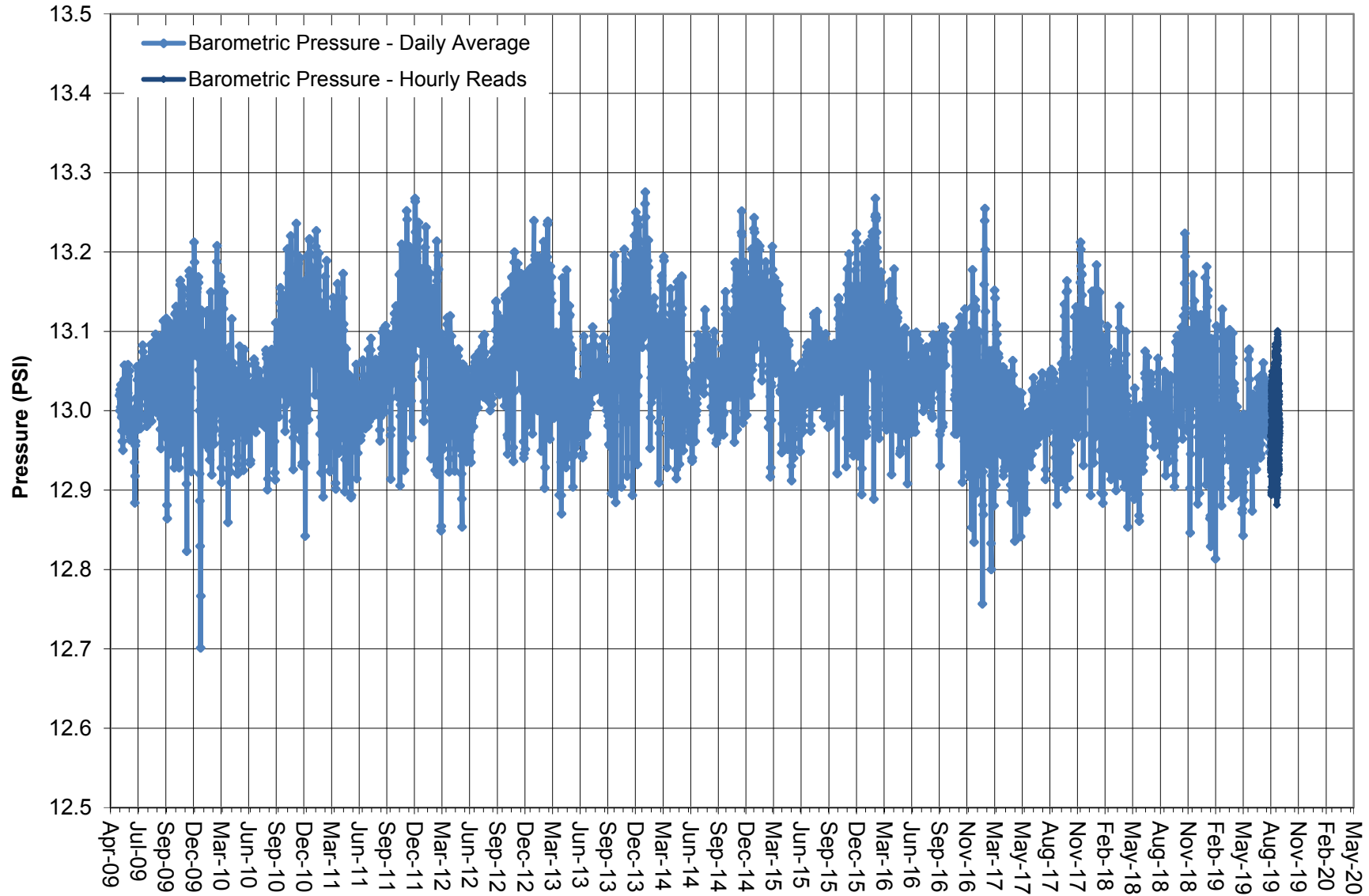
Note: Vented transducer data correlated to Manual DTW measurements. Represents surface water elevation of Little Lake. Coso Operating Co. initiated Hay Ranch Project pumping on 12/25/09.

GROUNDWATER ELEVATION DATA - Transducer RV260 - Little Lake Ranch Hotel Well



Note: Pressure Transducer removed in 2015 as approved by ICWD.

BAROMETRIC PRESSURE as Logged by BaroTroll



Note: BaroTroll located in well casing of well HR-2B.
Used to adjust pressure readings in non-vented transducers.
BaroTroll stopped working and was replaced 10/19/2016.