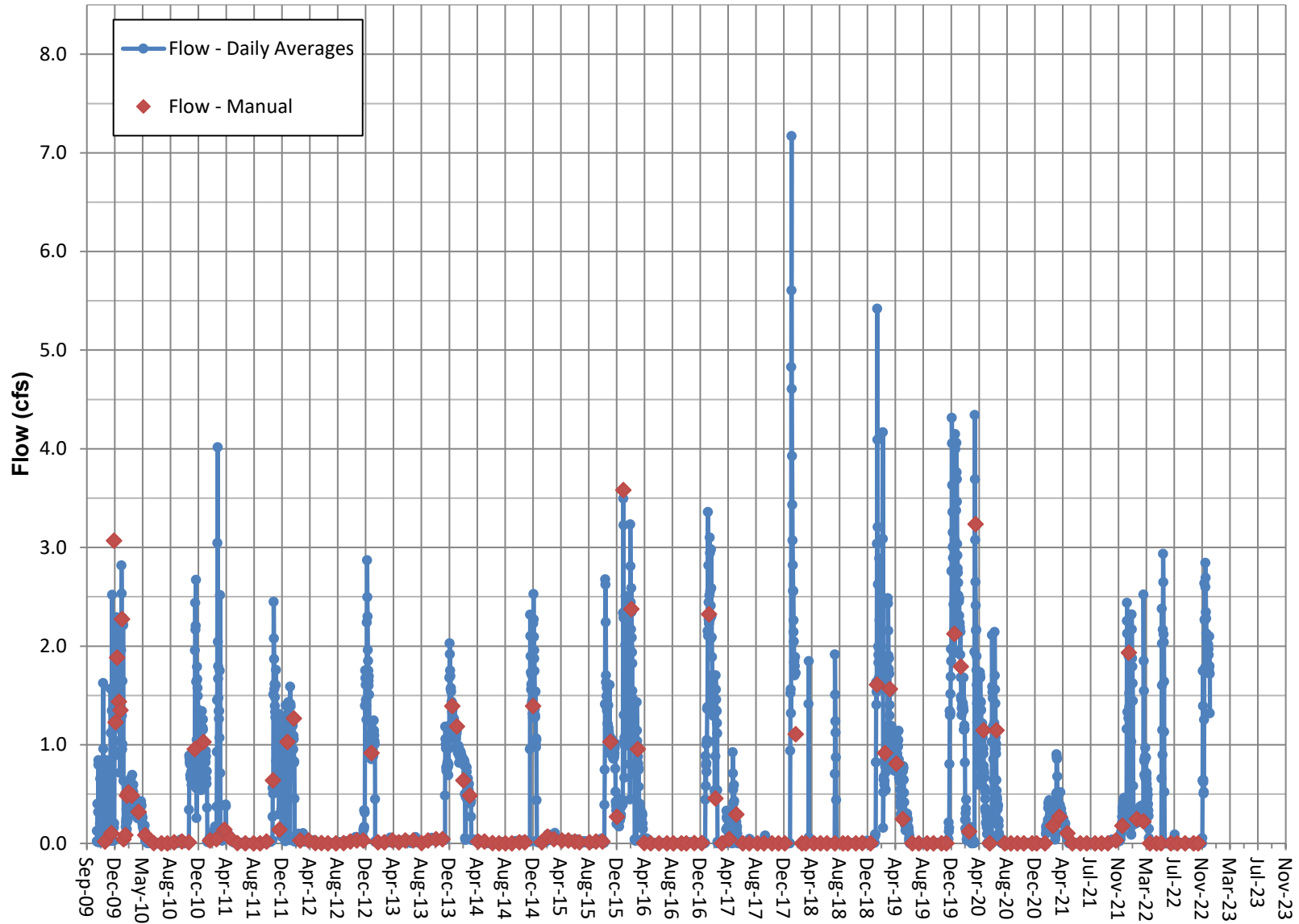


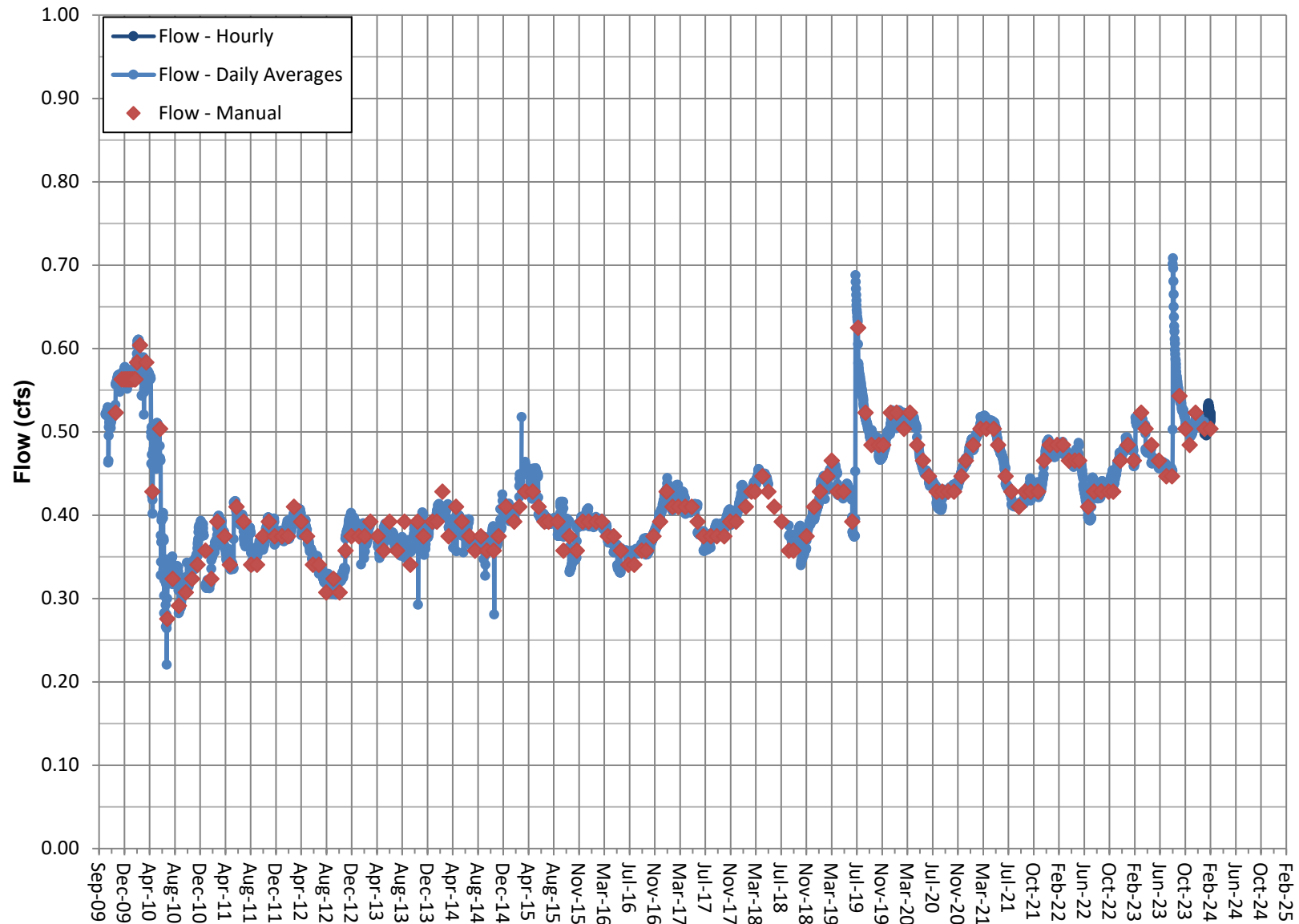
Surface Flow- Transducer RV 230- Little Lake Outflow



Note: Flows through Little Lake Outflow are influenced by natural and water management processes at Little Lake Ranch. Flume has known accuracy limitations, new data will not be presented due to inaccuracy.

2/19/2024

Surface Flow- Transducer RV 240- Coso Springs

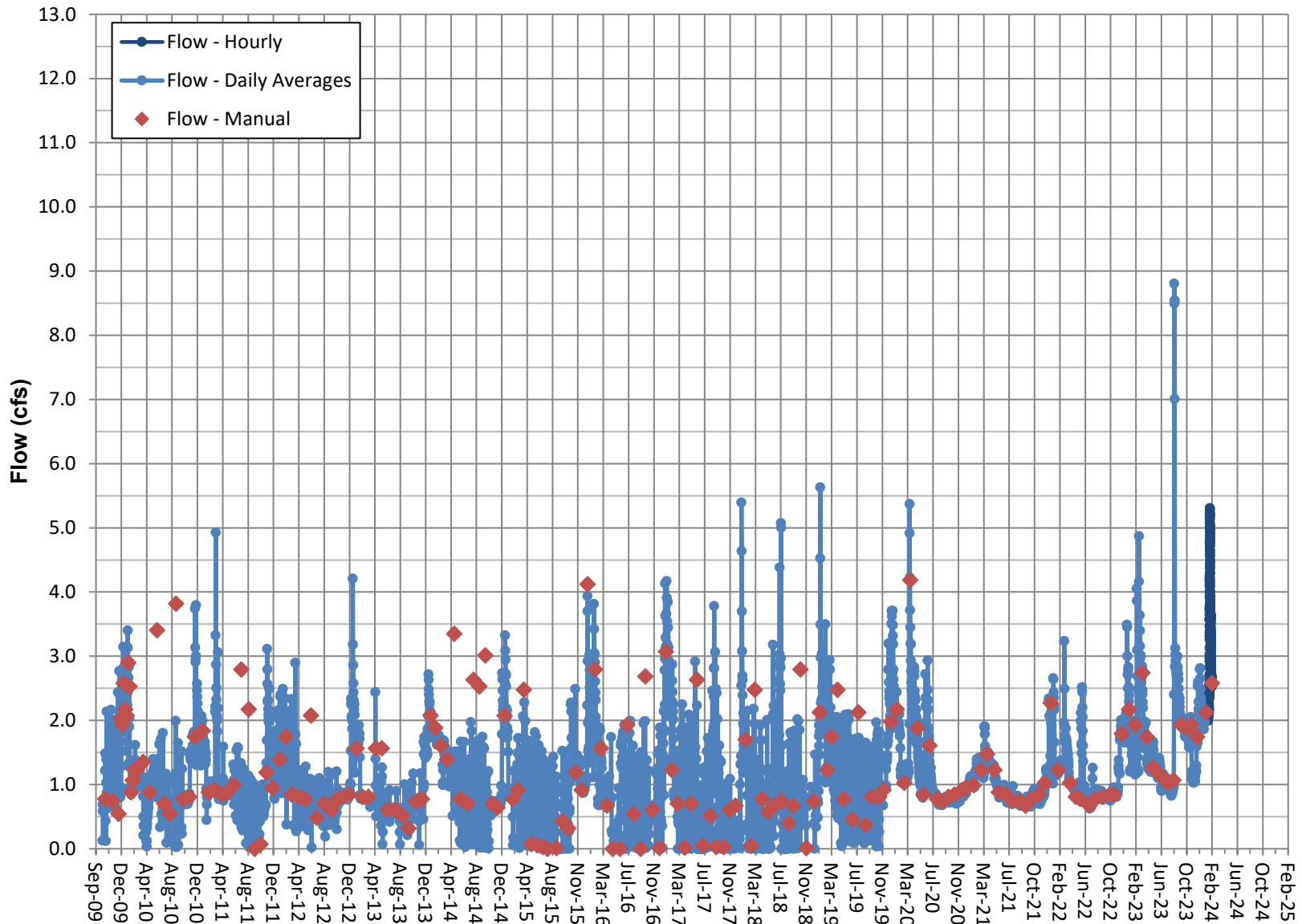


Note: Coso Springs is an artesian spring.

Transducer stopped working in June 2018 and was replaced in August 2018.

2/19/2024

Surface Flow- Transducer RV 245- North Culvert



Note: Flows through North Culvert are influenced by natural and water mgmt. processes at LLR.
Jan. 30 to Feb. 21, 2018 data from backup transducer, other data from primary InSitu transducer.