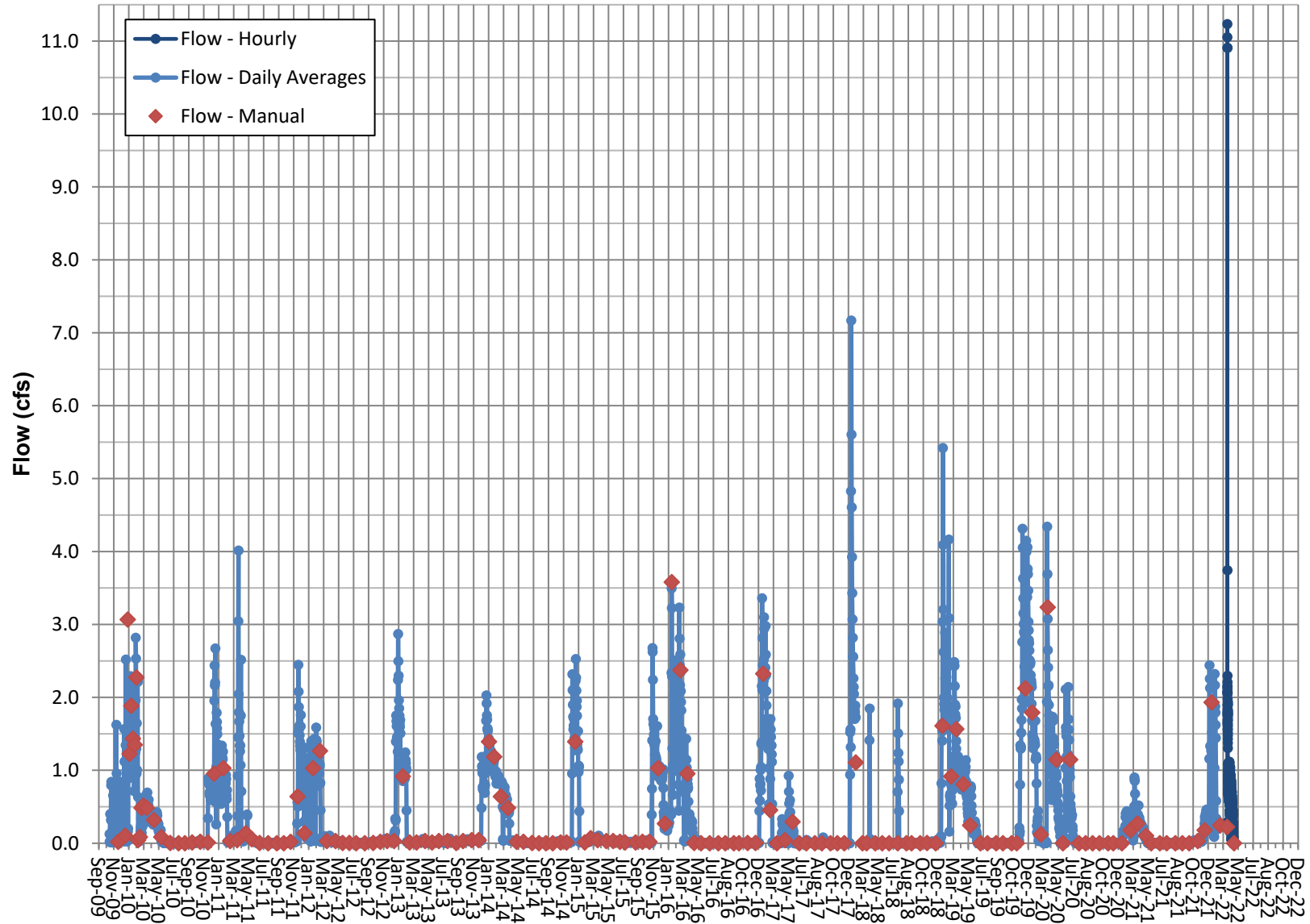
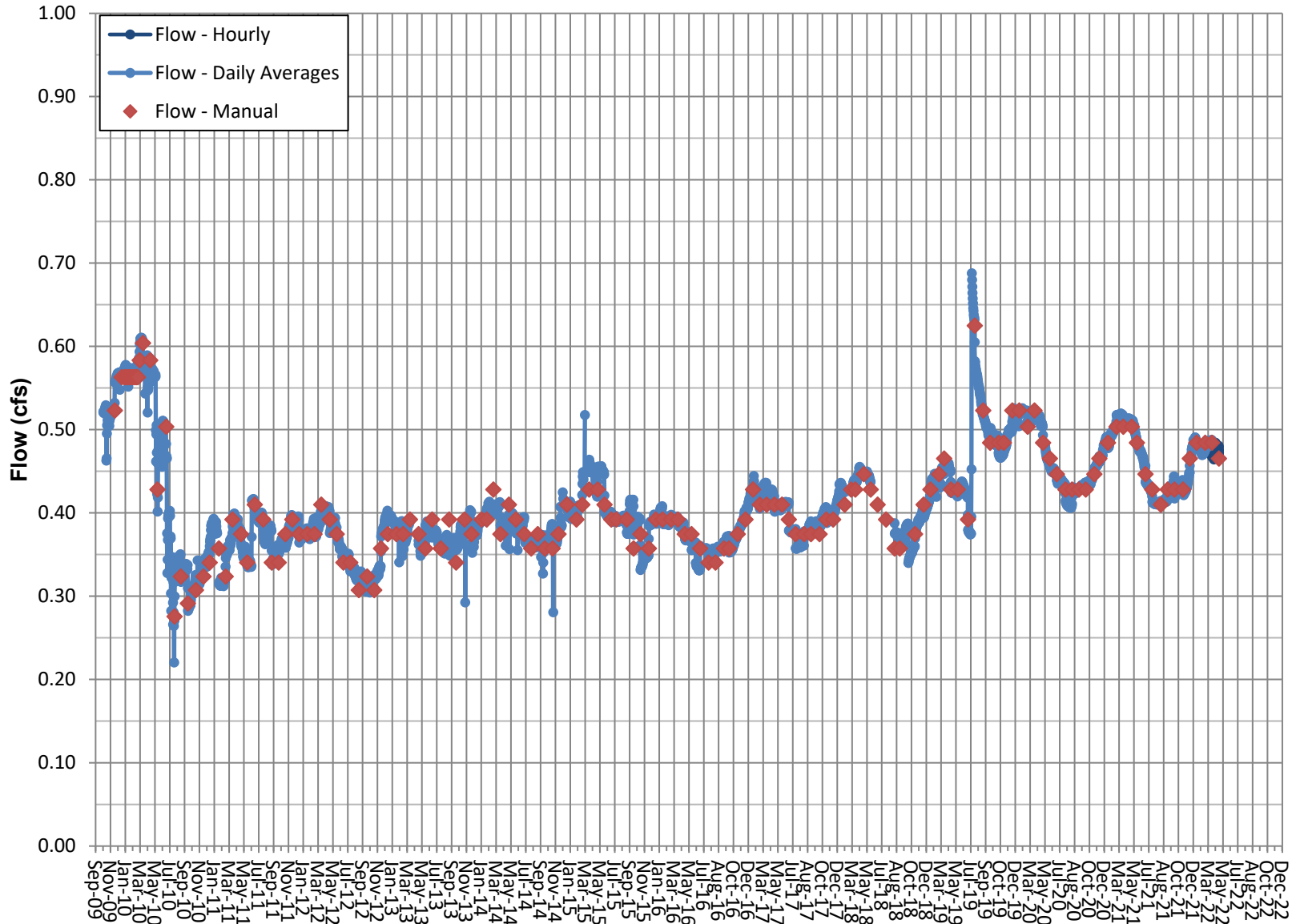


Surface Flow- Transducer RV 230- Little Lake Outflow



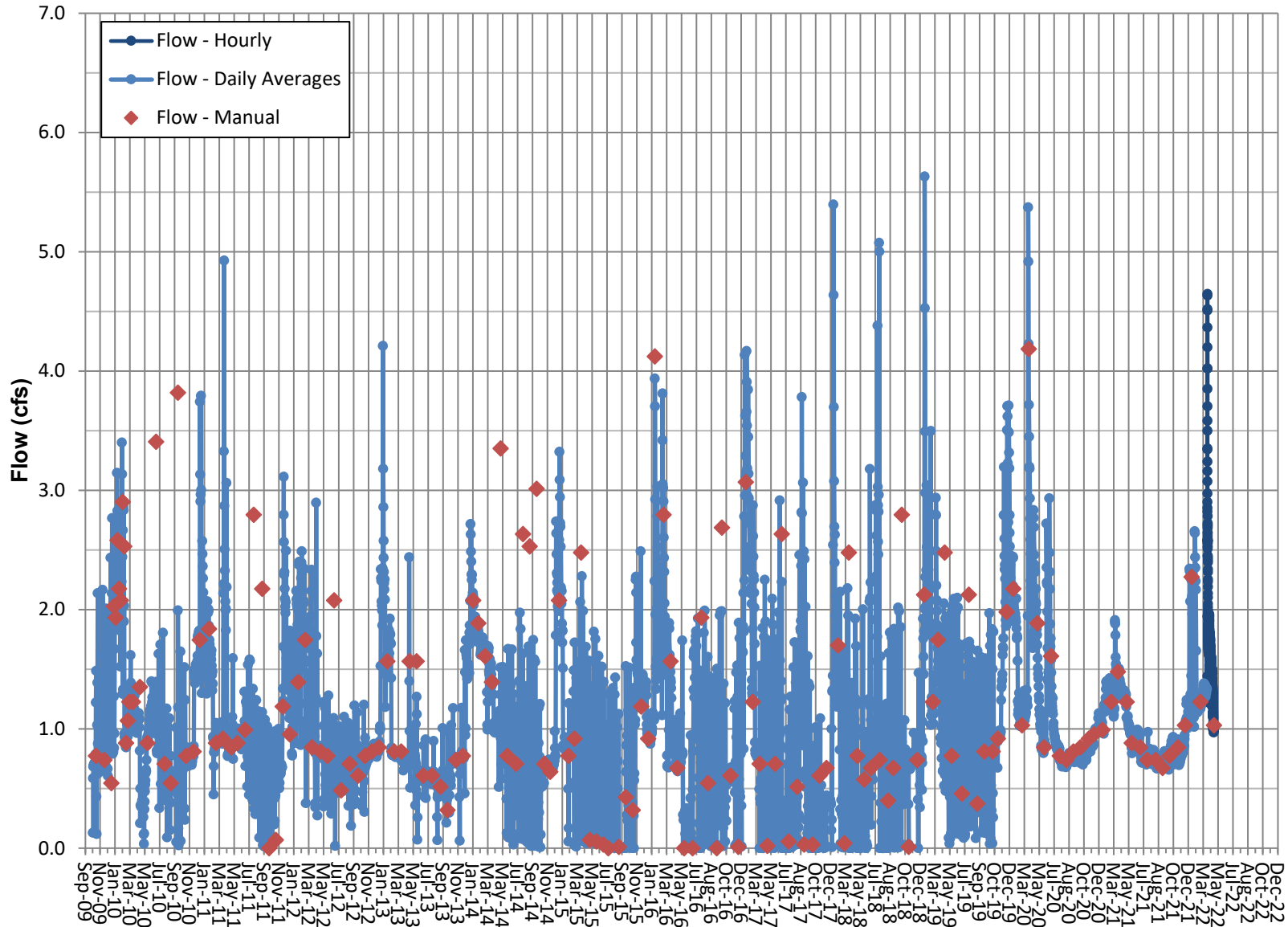
Note: Flows through Little Lake Outflow are influenced by natural and water management processes at Little Lake Ranch. Flume has known accuracy limitations.

Surface Flow- Transducer RV 240- Coso Springs



Note: Coso Springs is an artesian spring.
Transducer stopped working in June 2018 and was replaced in August 2018.

Surface Flow- Transducer RV 245- North Culvert



Note: Flows through North Culvert are influenced by natural and water mgmt. processes at LLR.
Jan. 30 to Feb. 21, 2018 data from backup transducer, other data from primary InSitu transducer.