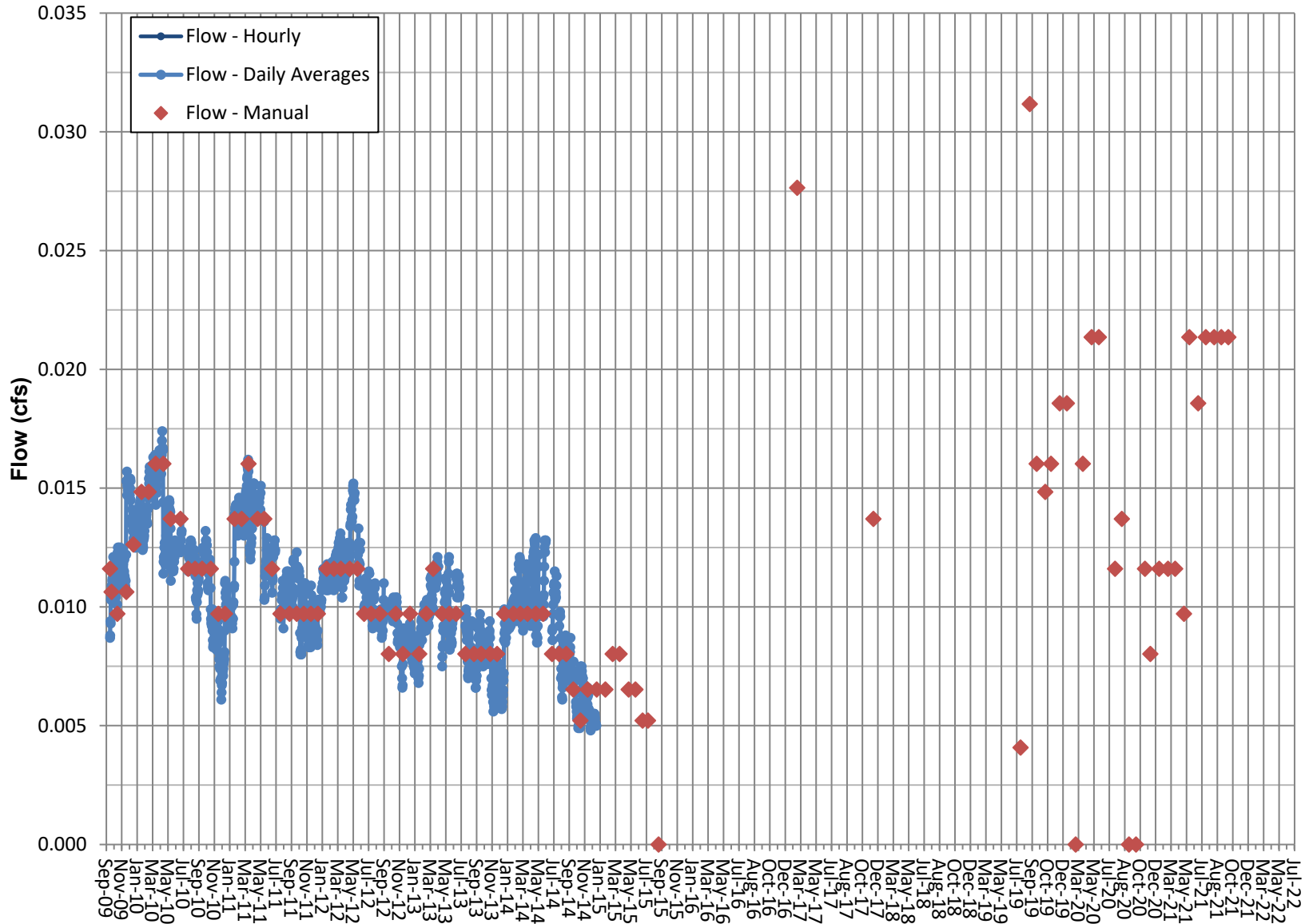
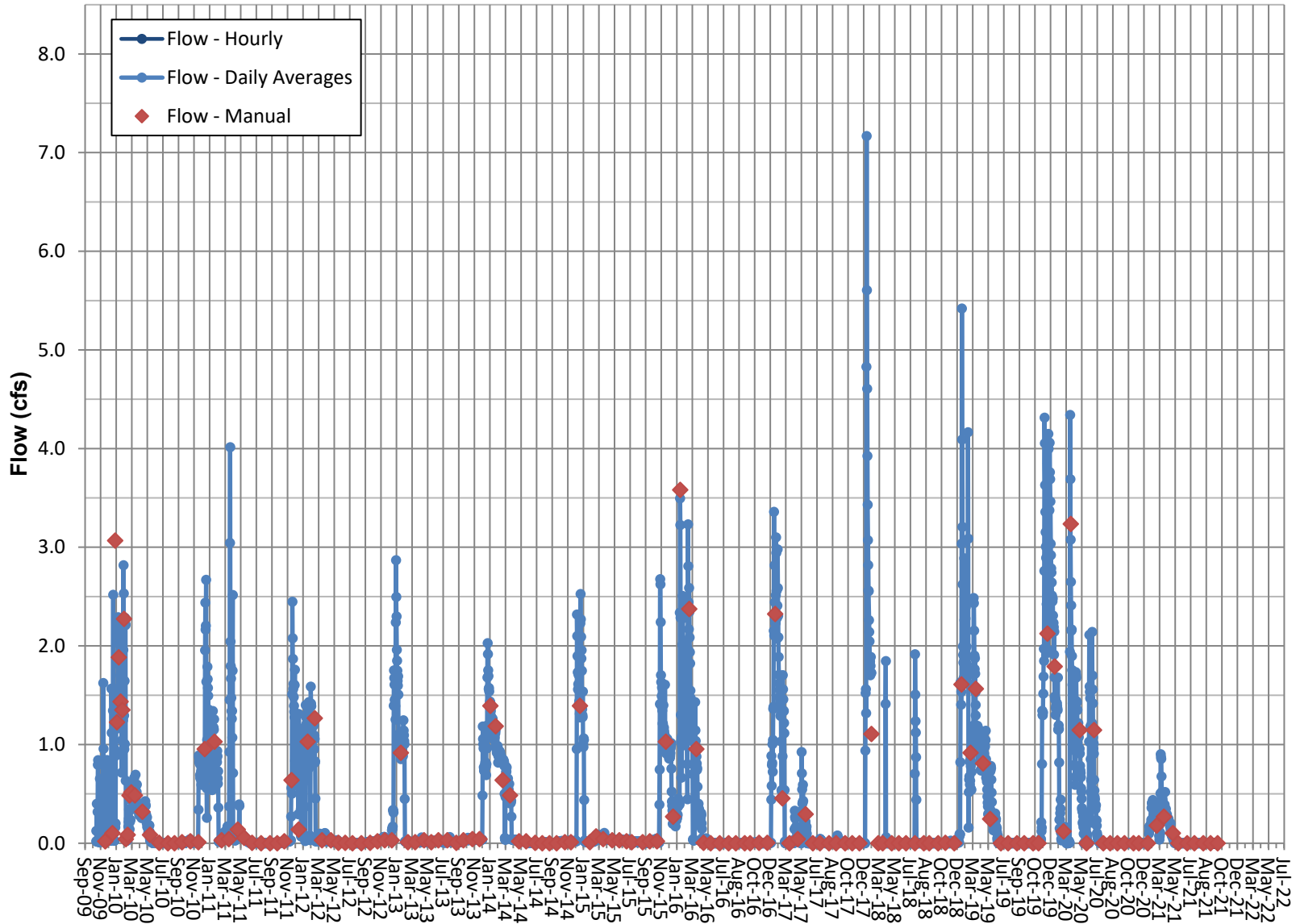


### Surface Flow- Transducer RV 112- Davis Ranch South Flow



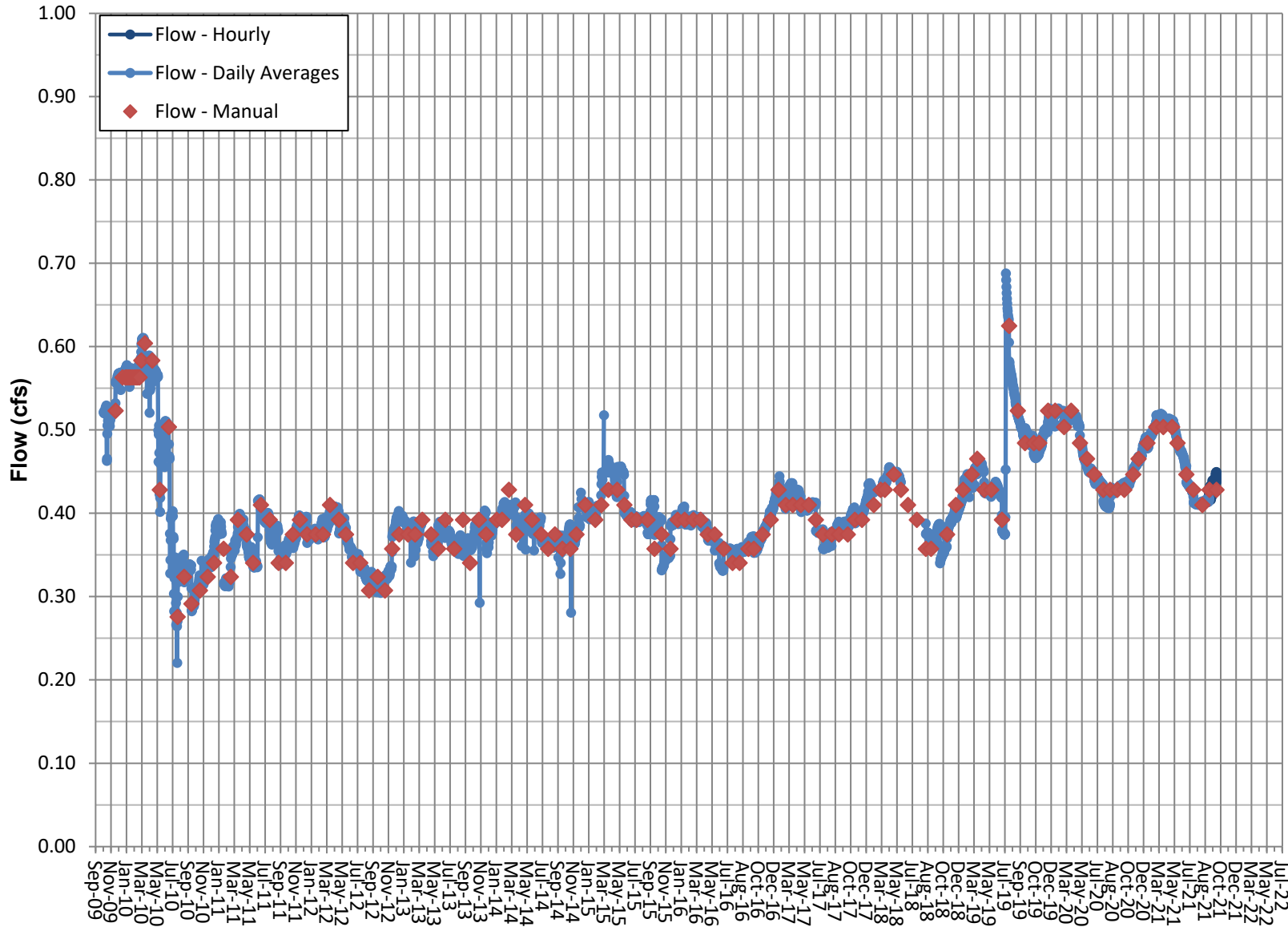
Note: Transducer removed in 2015, water supply pump was installed in DR South Well in July 2015.

### Surface Flow- Transducer RV 230- Little Lake Outflow



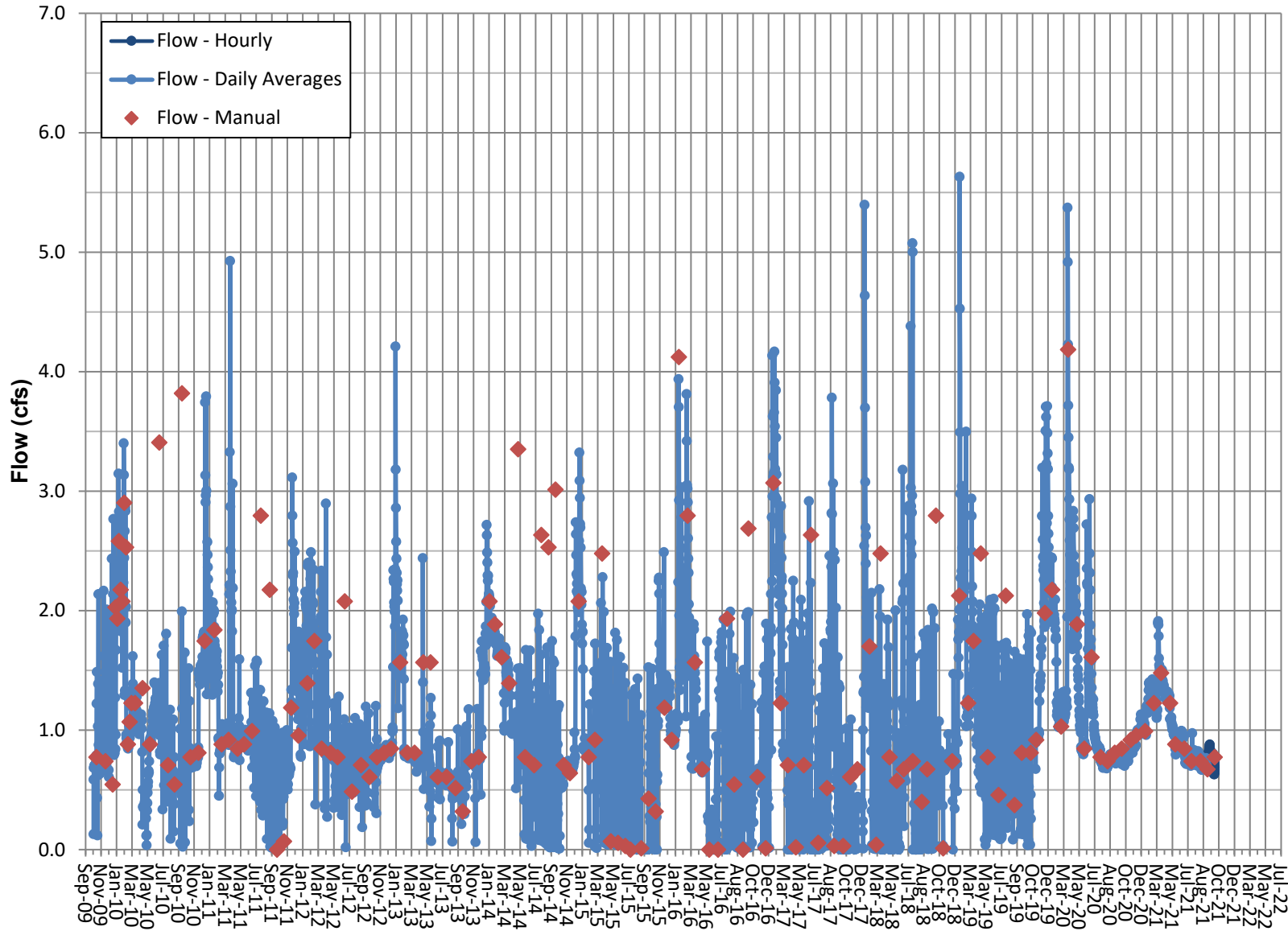
Note: Flows through Little Lake Outflow are influenced by natural and water management processes at Little Lake Ranch.  
Jan. 30 to Feb. 21, 2018 data missing due to transducer programming error.

### Surface Flow- Transducer RV 240- Coso Springs



Note: Coso Springs is an artesian spring.  
Transducer stopped working in June 2018 and was replaced in August 2018.

## Surface Flow- Transducer RV 245- North Culvert



Note: Flows through North Culvert are influenced by natural and water mgmt. processes at LLR.  
Jan. 30 to Feb. 21, 2018 data from backup transducer, other data from primary InSitu transducer.