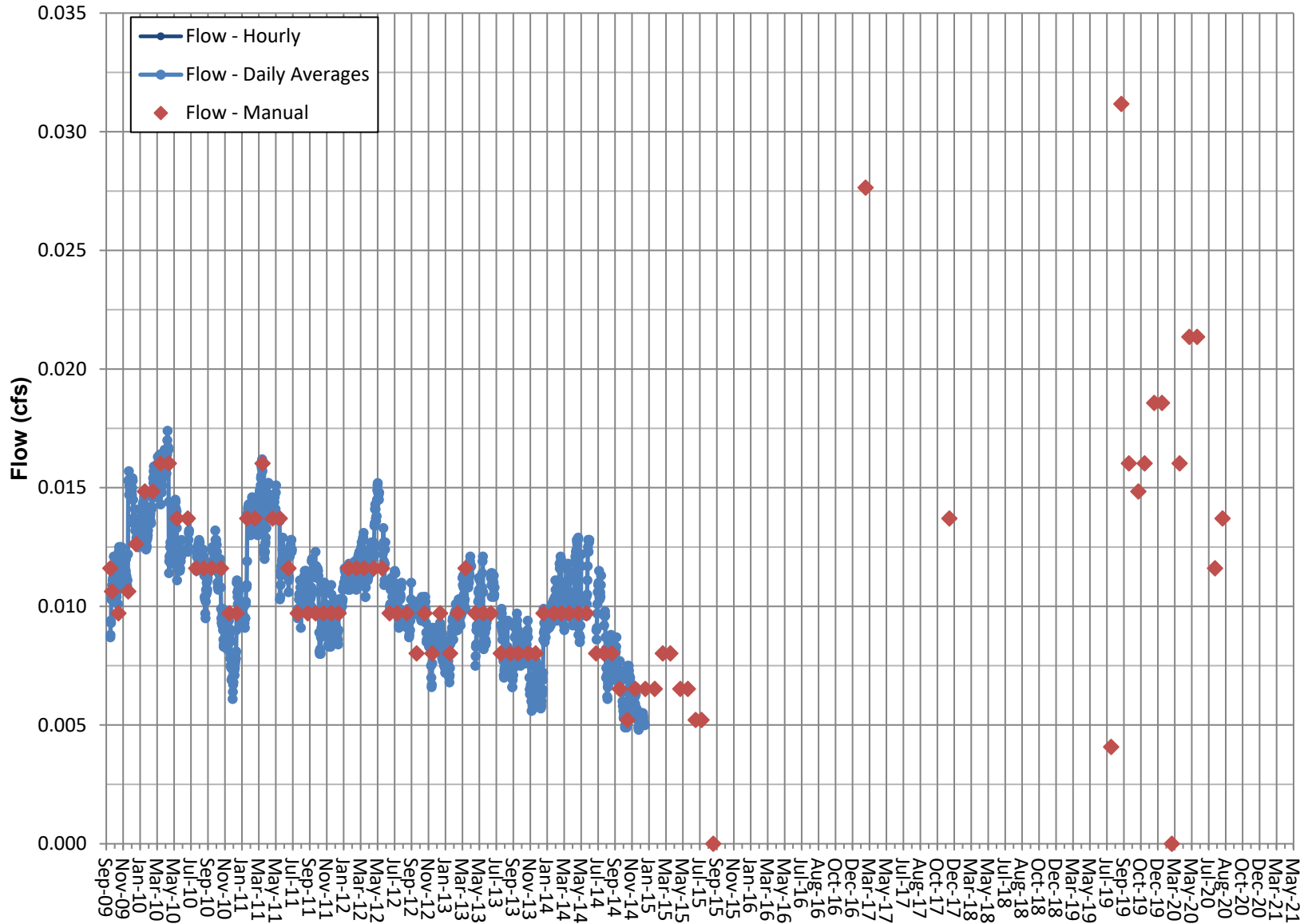
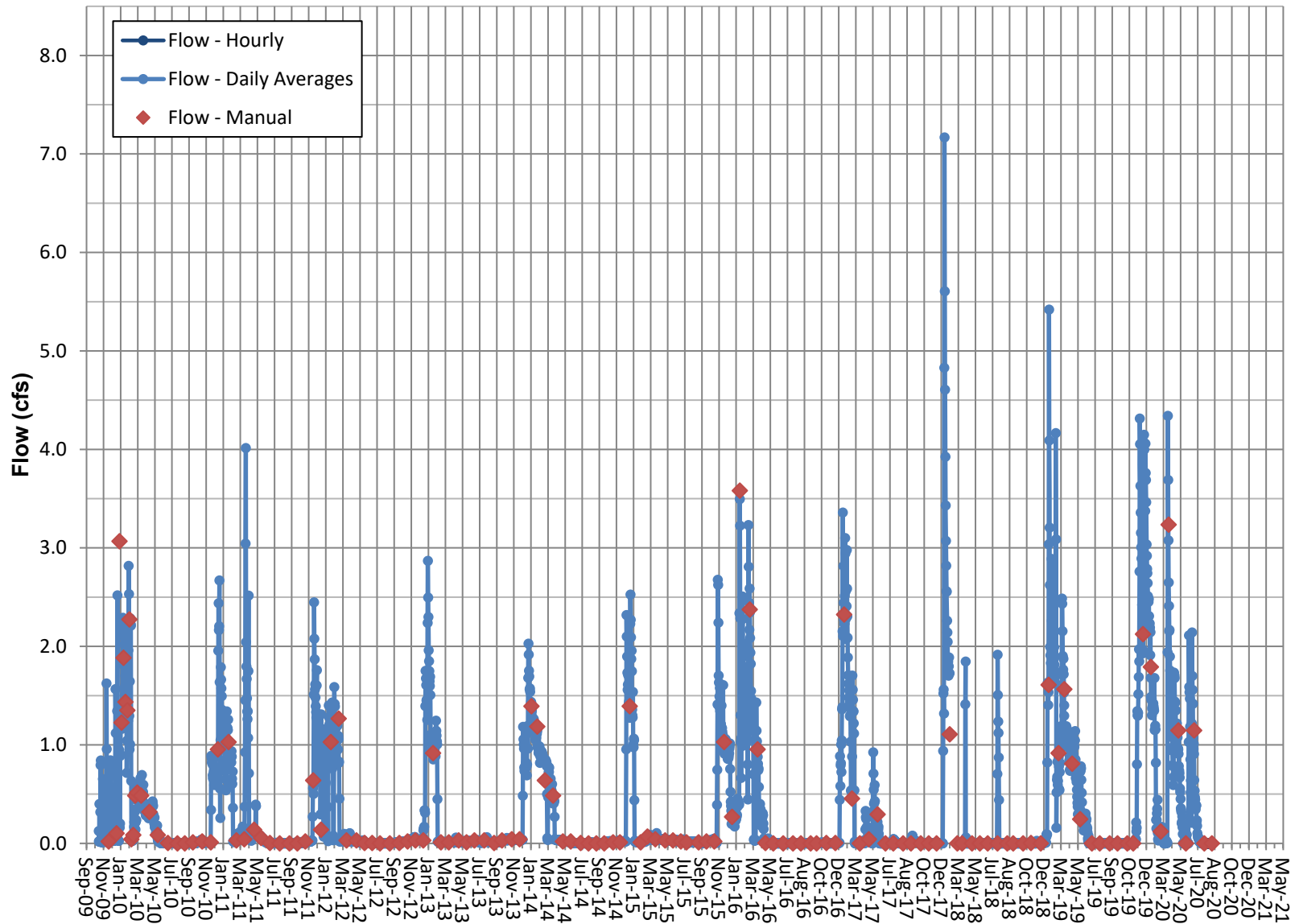


Surface Flow - Transducer RV 112- Davis Ranch South Flow



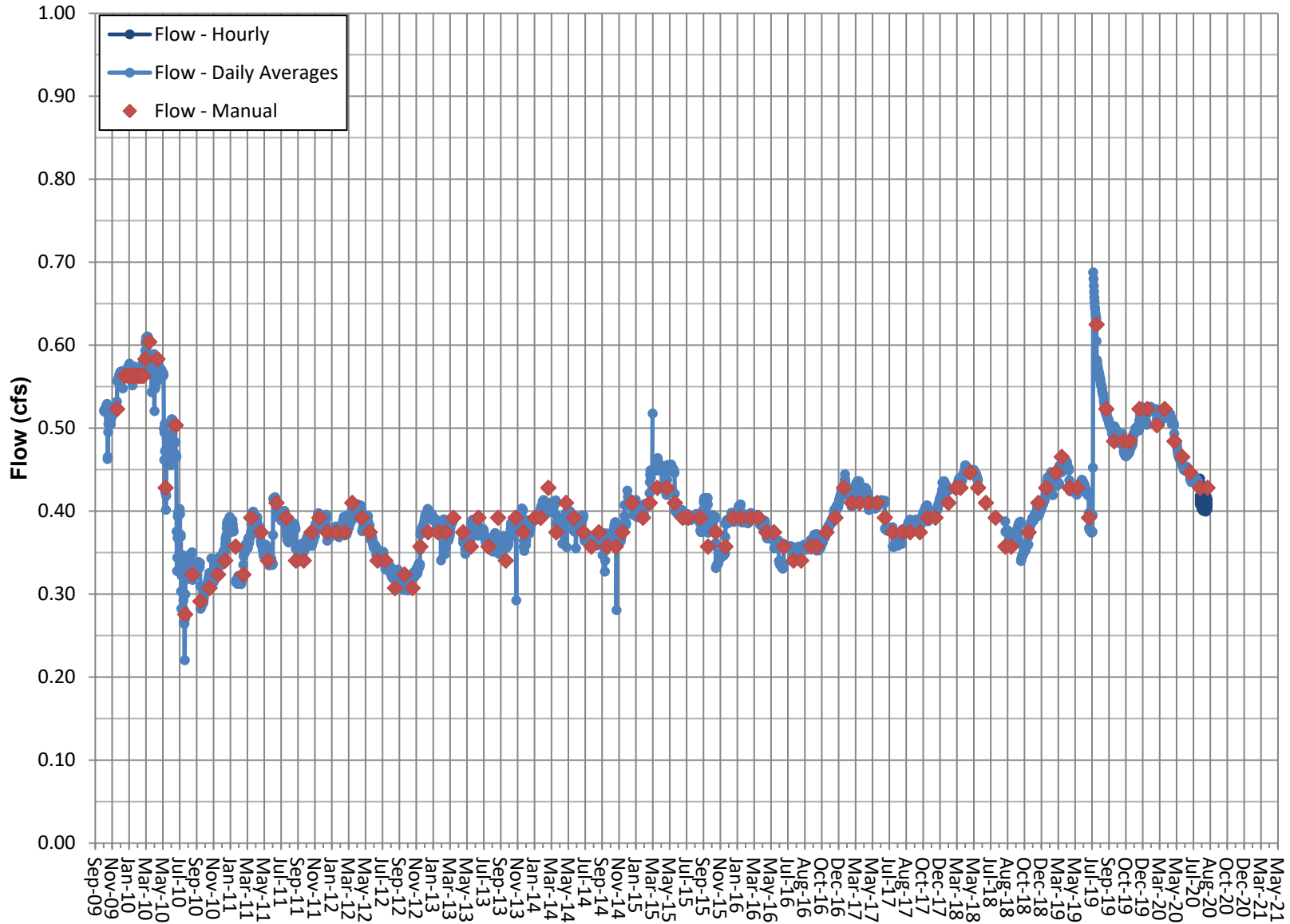
Note: Transducer removed in 2015, water supply pump was installed in DR South Well in July 2015.

Surface Flow- Transducer RV 230- Little Lake Outflow

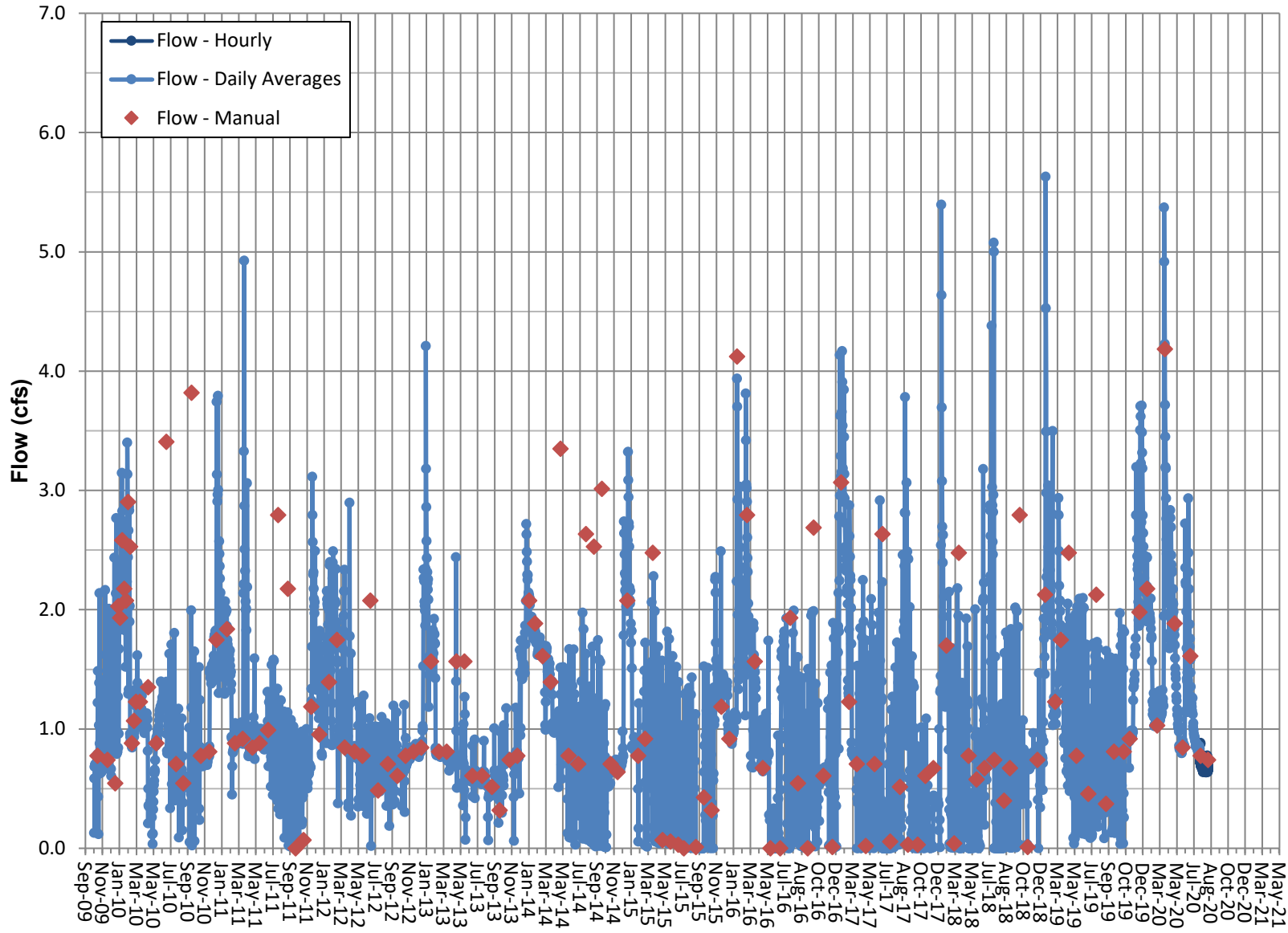


Note: Flows through Little Lake Outflow are influenced by natural and water management processes at Little Lake Ranch.
Jan. 30 to Feb. 21, 2018 data missing due to transducer programming error.

Surface Flow- Transducer RV 240- Coso Springs



Surface Flow - Transducer RV 245- North Culvert



Note: Flows through North Culvert are influenced by natural and water mgmt. processes at LLR.
Jan. 30 to Feb. 21, 2018 data from backup transducer, other data from primary InSitu transducer.