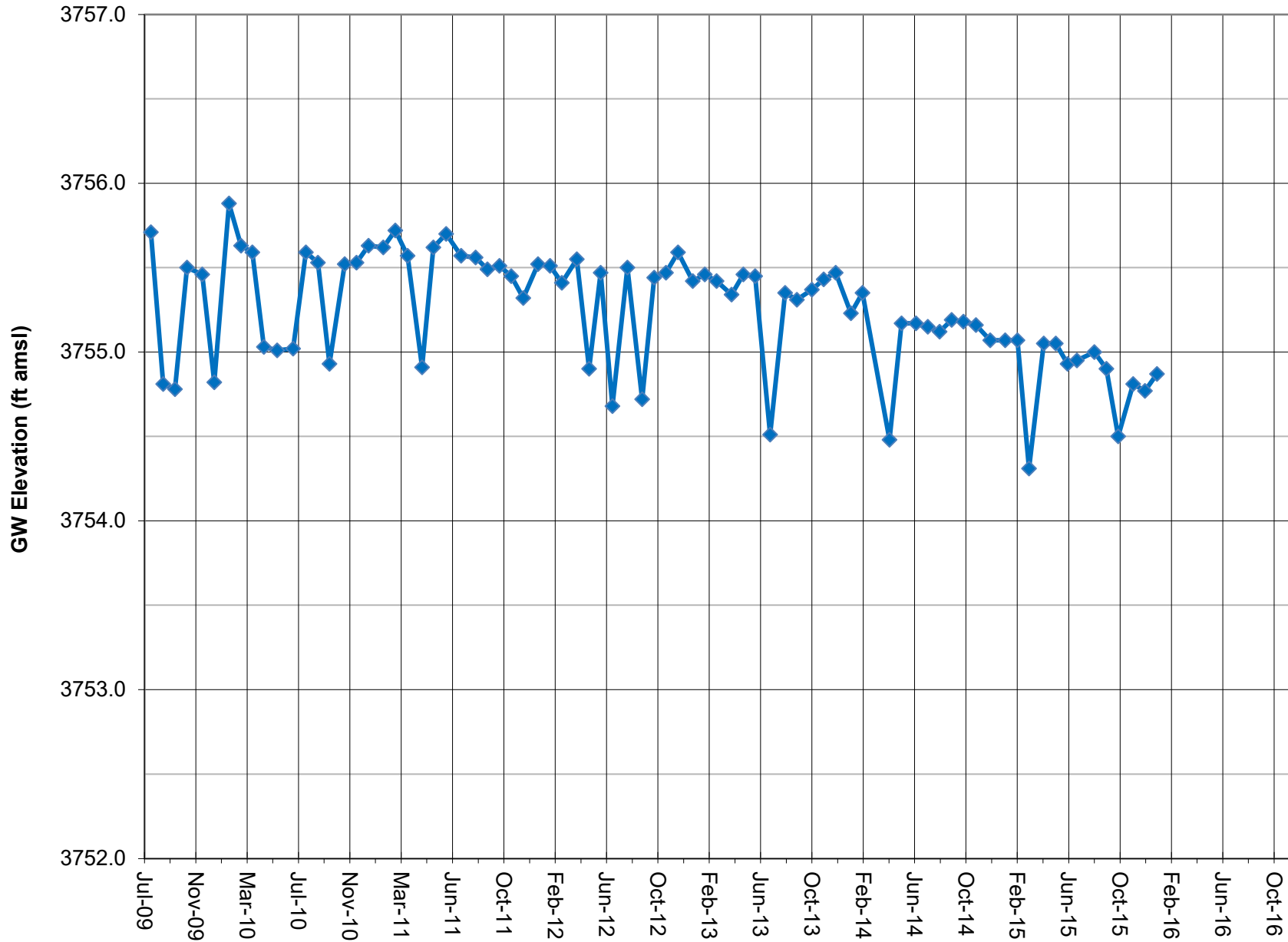
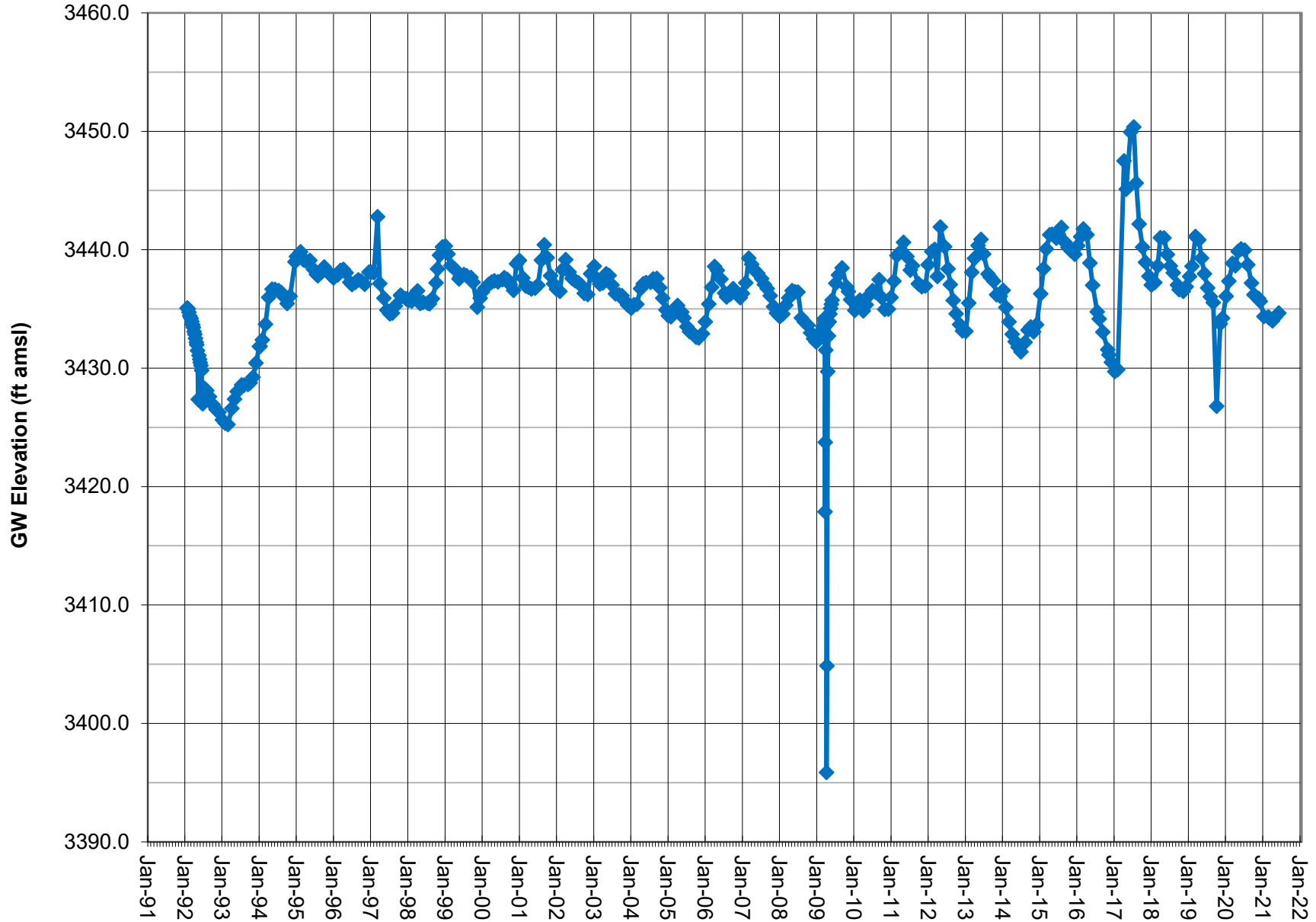


GROUNDWATER ELEVATION DATA - Long-Term (Manual) RV010 - Enchanted Village Well



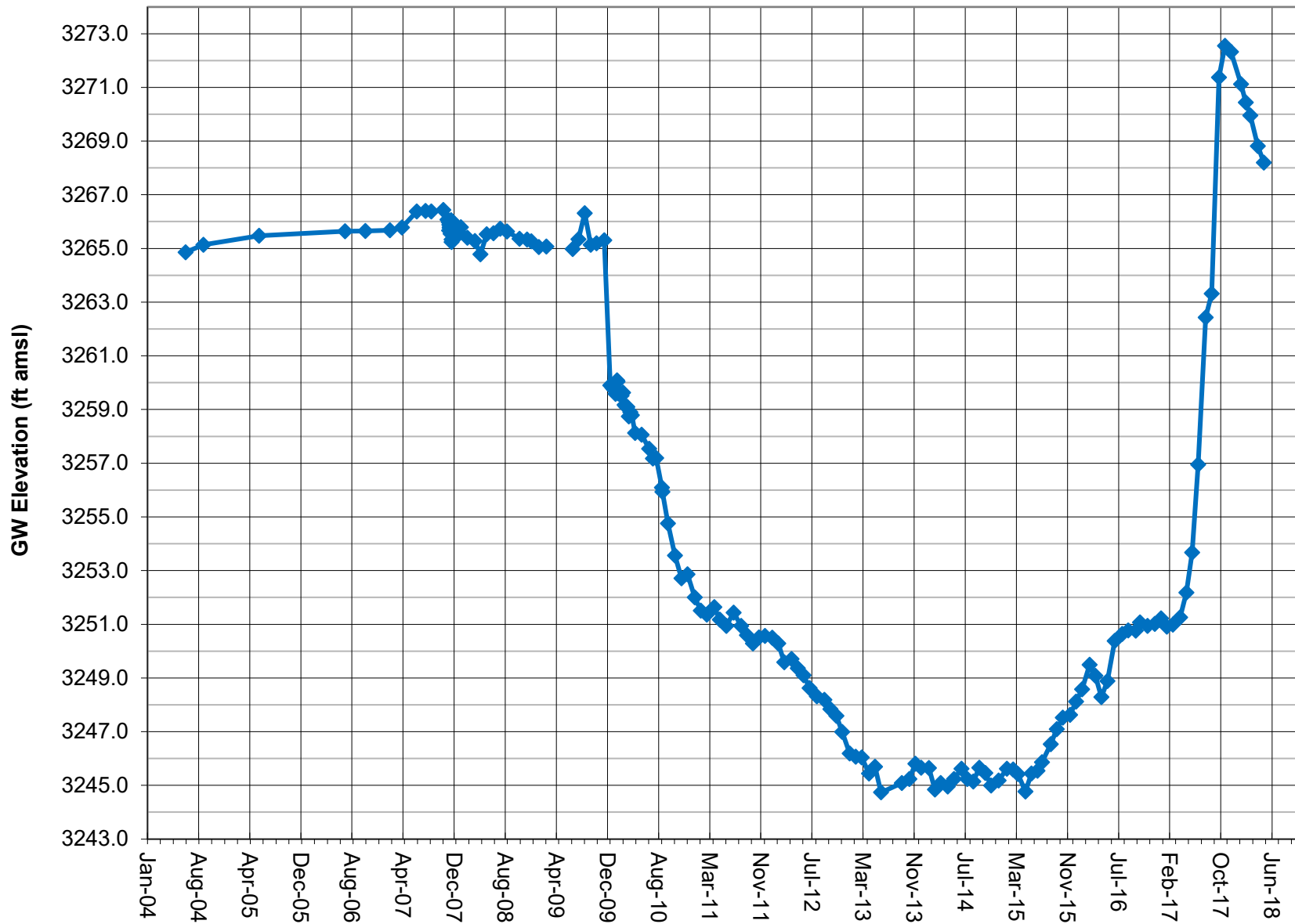
Note: Groundwater elevation data based on manual depth-to-water measurements.
 Enchanted Village Well (Dews) is an actively pumped domestic supply well.
 Monitoring discontinued Feb. 2016 per ICWD

GROUNDWATER ELEVATION DATA - Long-Term (Manual) RV020 - LADWP 816 Well



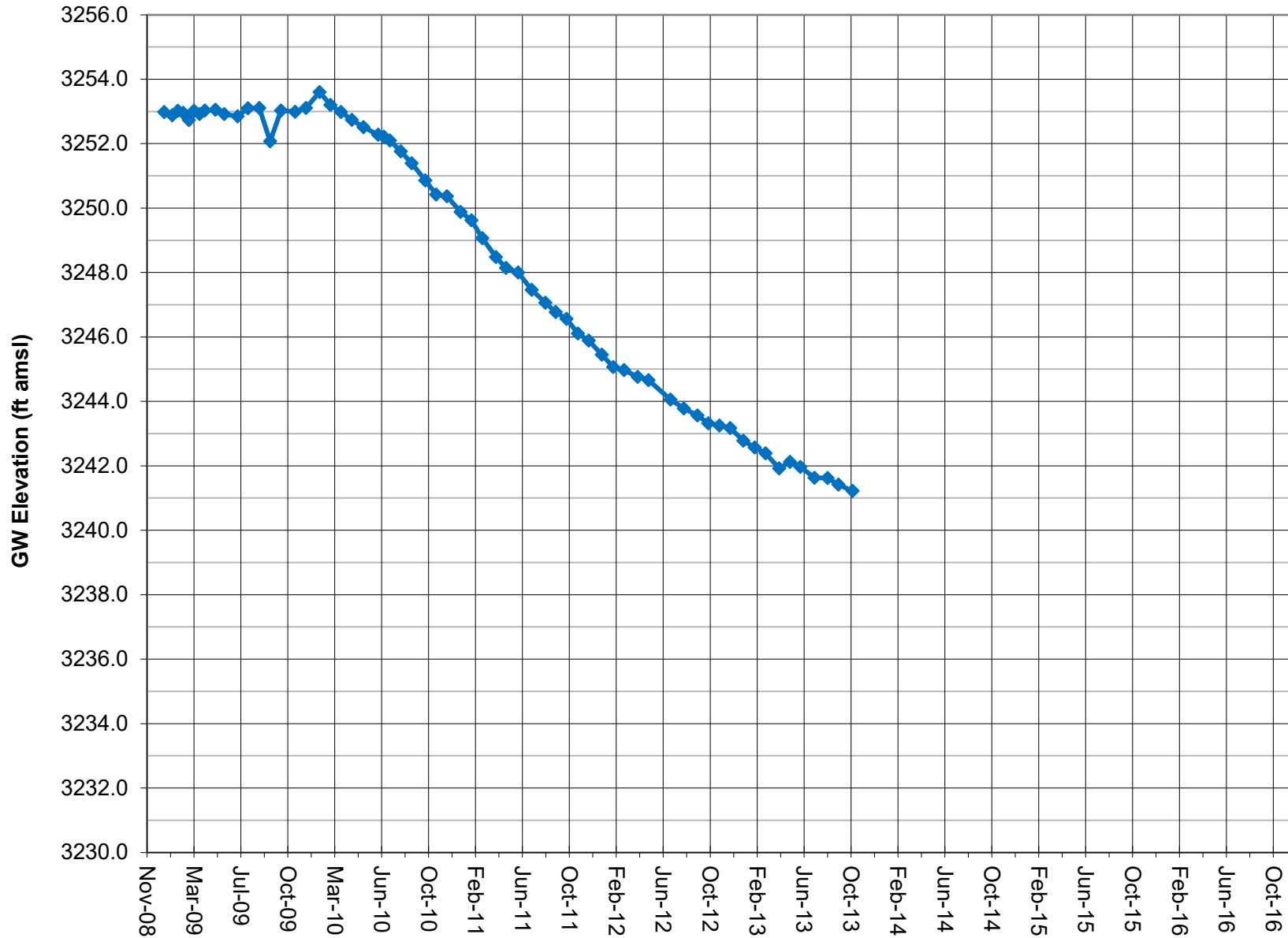
Note: Groundwater elevation data based on manual depth-to-water measurements.
LADWP conducted a groundwater pump test on a nearby well in the first quarter 2009.
Coso Operating Co. initiated Hay Ranch Project pumping on 12/25/09.

GROUNDWATER ELEVATION DATA - Long-Term (Manual) RV030 - Cal Pumice Well



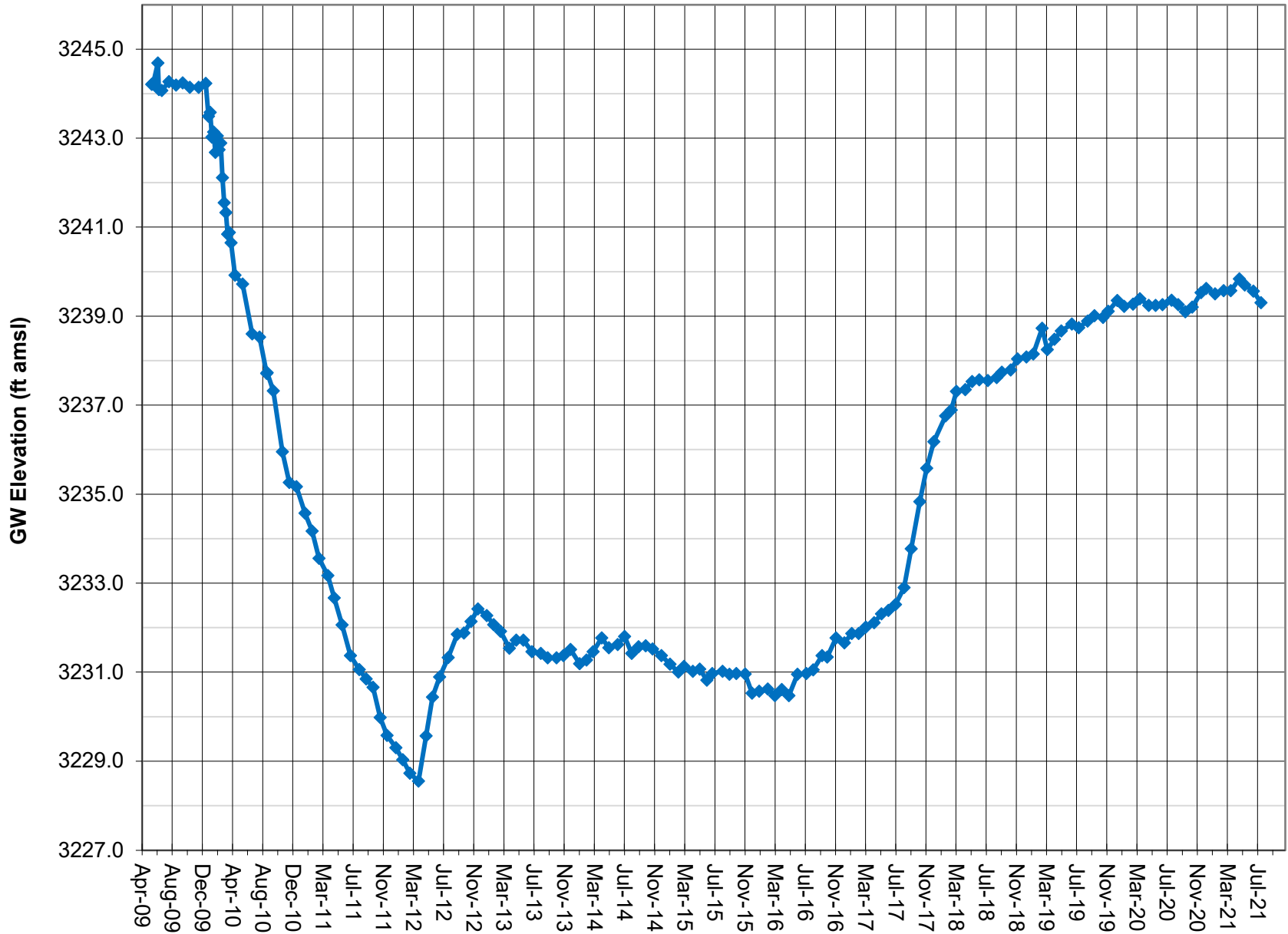
Note: A data gap exists in 2009 during a pump test on a nearby well.
 The notable DTW change in late 2009 was confirmed by in-well PT.
 Coso Operating Co. initiated Hay Ranch Project pumping on 12/25/09.

GROUNDWATER ELEVATION DATA - Long-Term (Manual) RV040 - Dunmovin Well



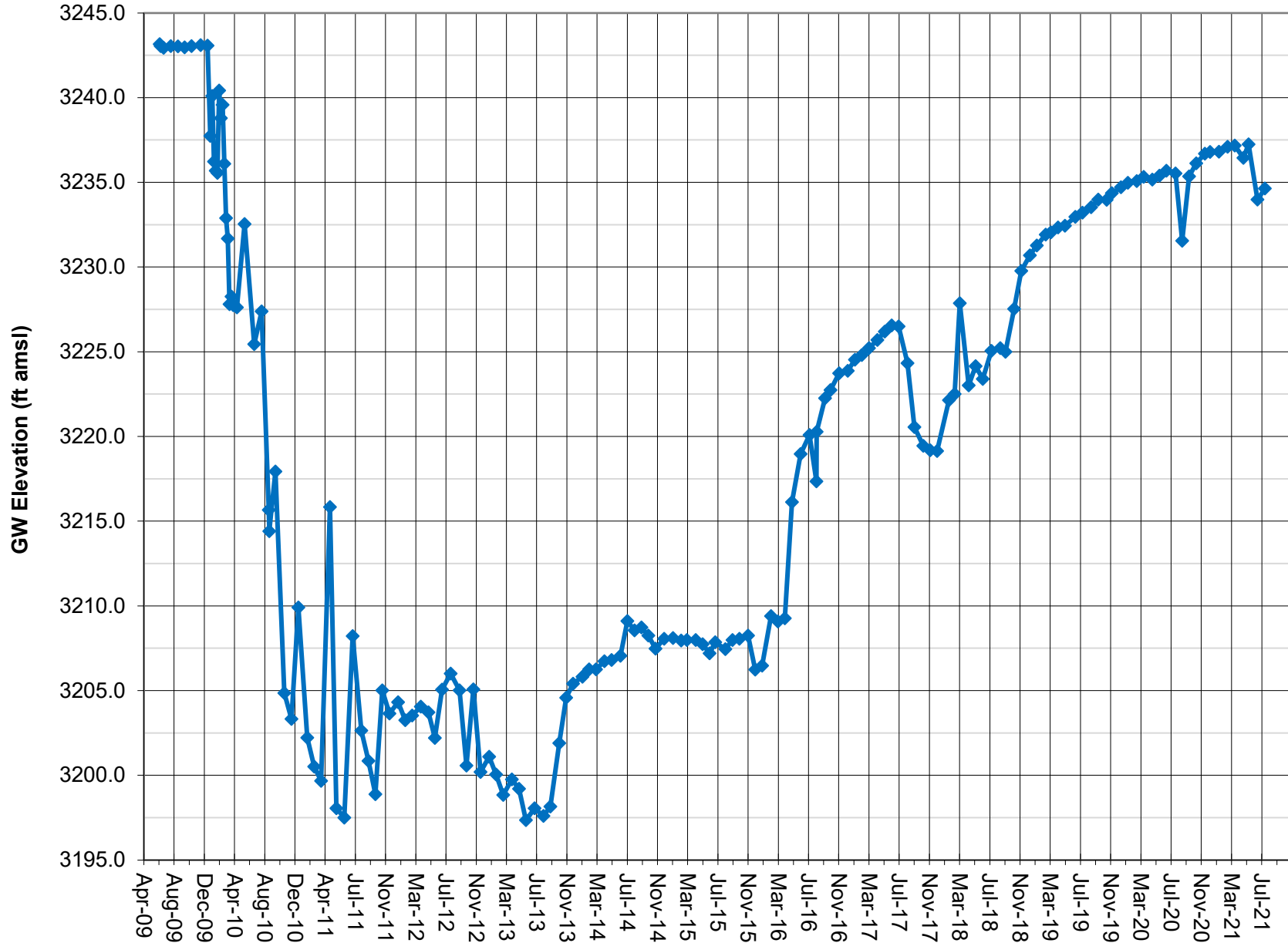
Note: Groundwater elevation data based on manual depth-to-water measurements.
Dunmovin Well is an active domestic supply well.
Monitoring discontinued in Oct. 2013 due to new in-well infrastructure.

GROUNDWATER ELEVATION DATA - Long-Term (Manual) RV060 - Hay Ranch 1A Well



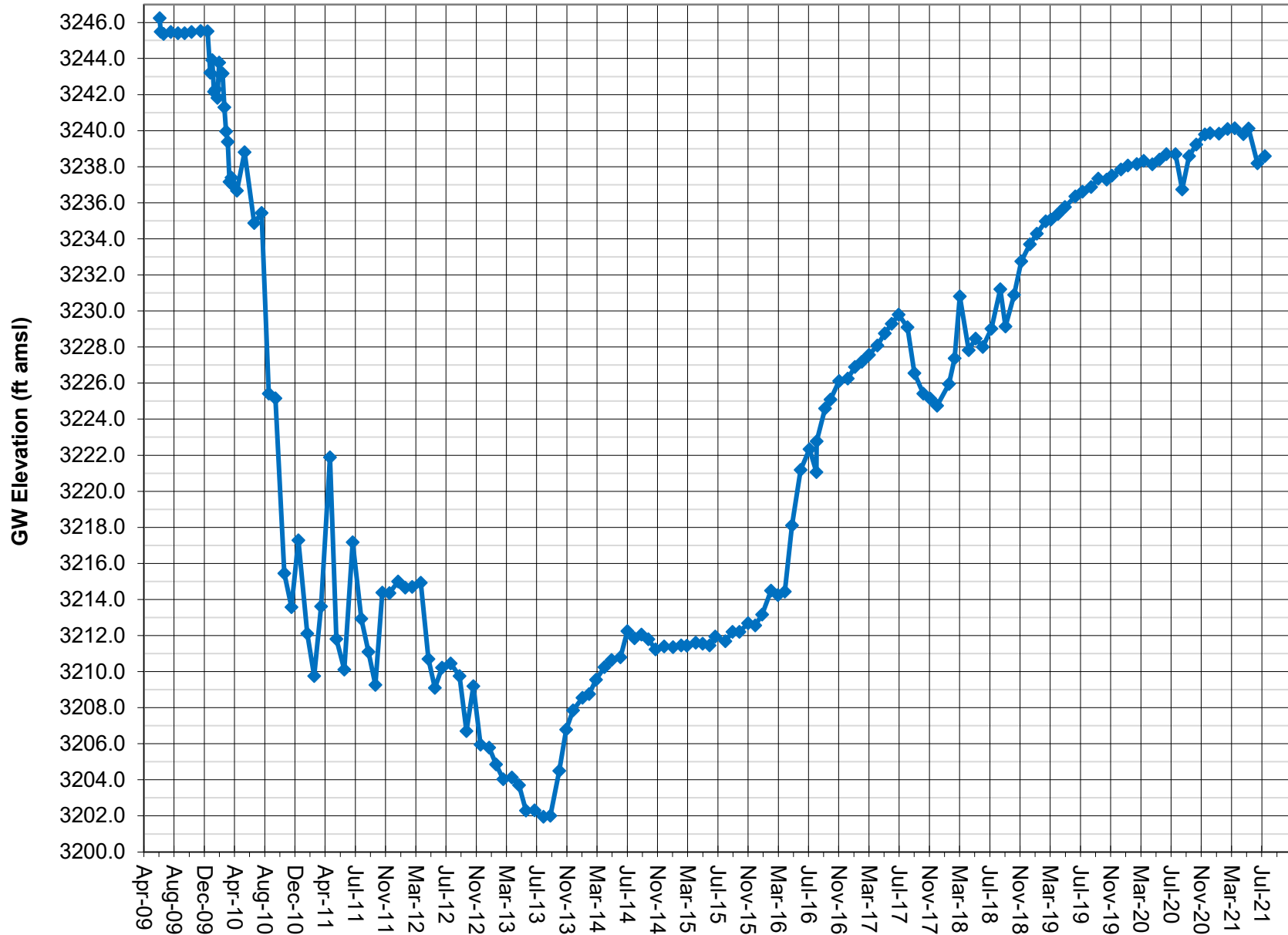
Note: Groundwater elevation data based on manual depth-to-water measurements.
 Screened interval is 170-260 feet.
 Coso Operating Co. initiated Hay Ranch Project pumping on 12/25/09.

GROUNDWATER ELEVATION DATA - Long-Term (Manual) RV061 - Hay Ranch 1B Well



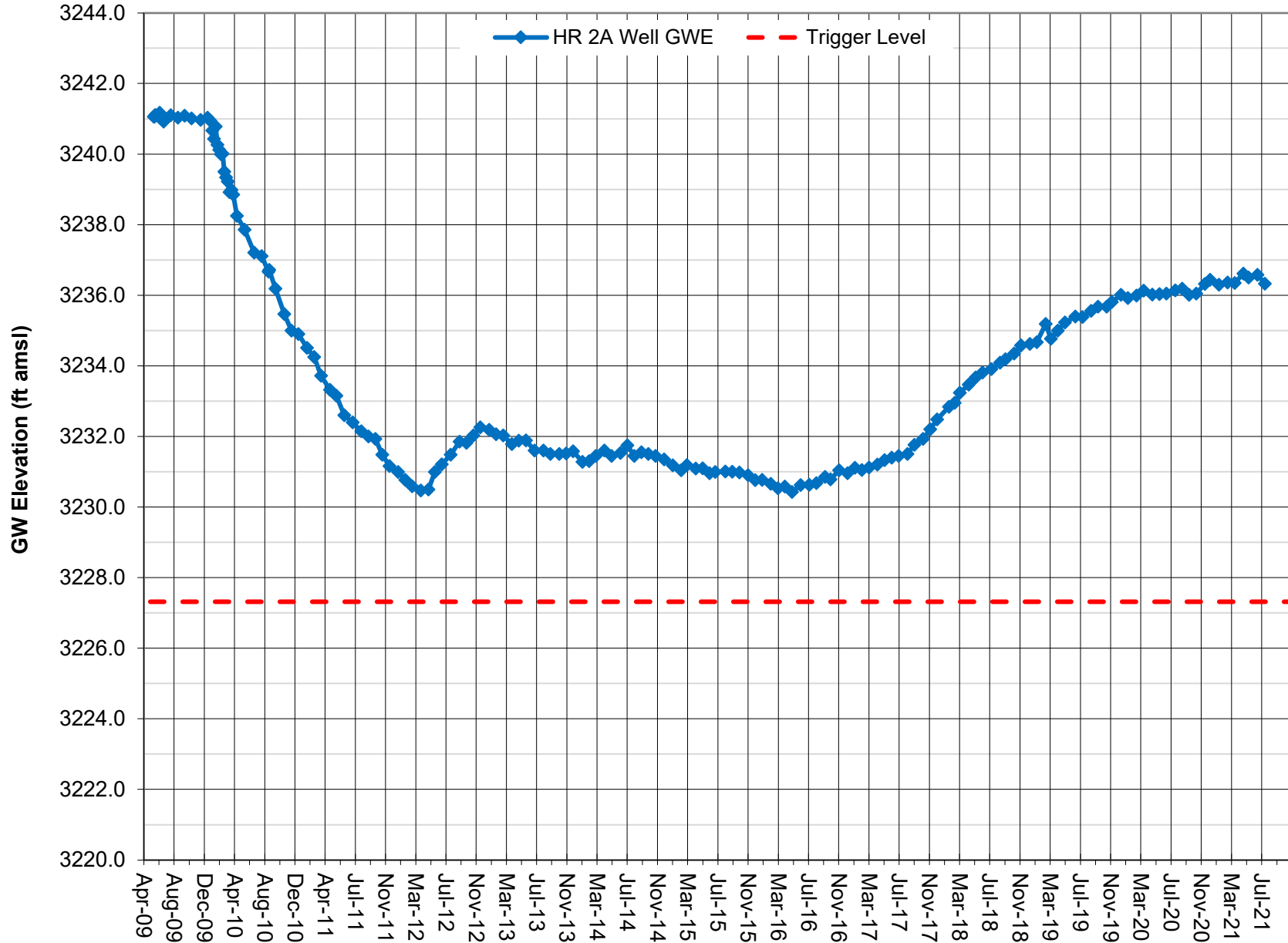
Note: Groundwater elevation data based on manual depth-to-water measurements.
 Screened interval is 490-540 feet.
 Coso Operating Co. initiated Hay Ranch Project pumping on 12/25/09.

GROUNDWATER ELEVATION DATA - Long-Term (Manual) RV062 - Hay Ranch 1C Well



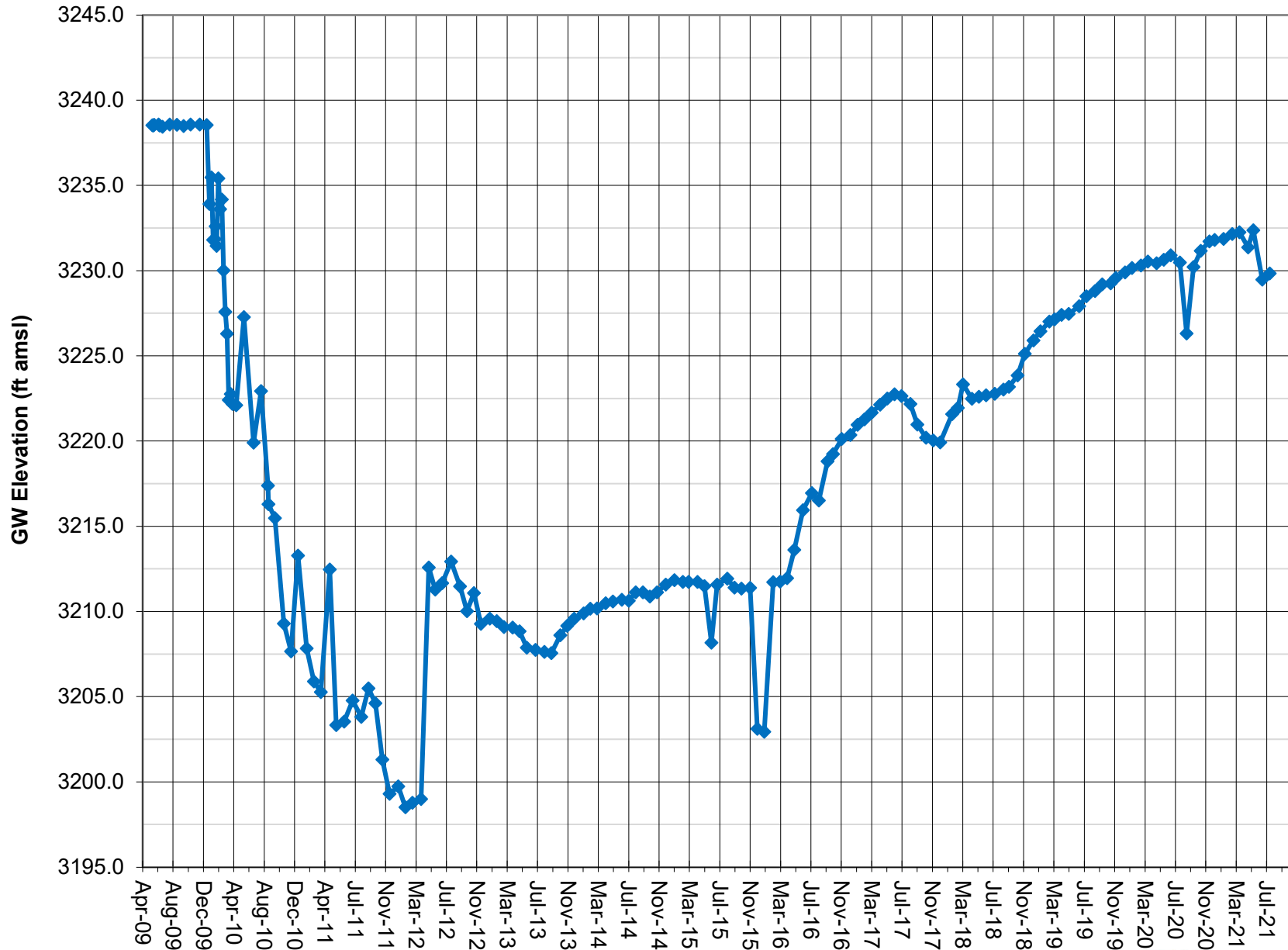
Note: Groundwater elevation data based on manual depth-to-water measurements.
 Screened interval is 340-405 feet.
 Coso Operating Co. initiated Hay Ranch Project pumping on 12/25/09.

GROUNDWATER ELEVATION DATA - Long-Term (Manual) RV080- Hay Ranch 2A Well



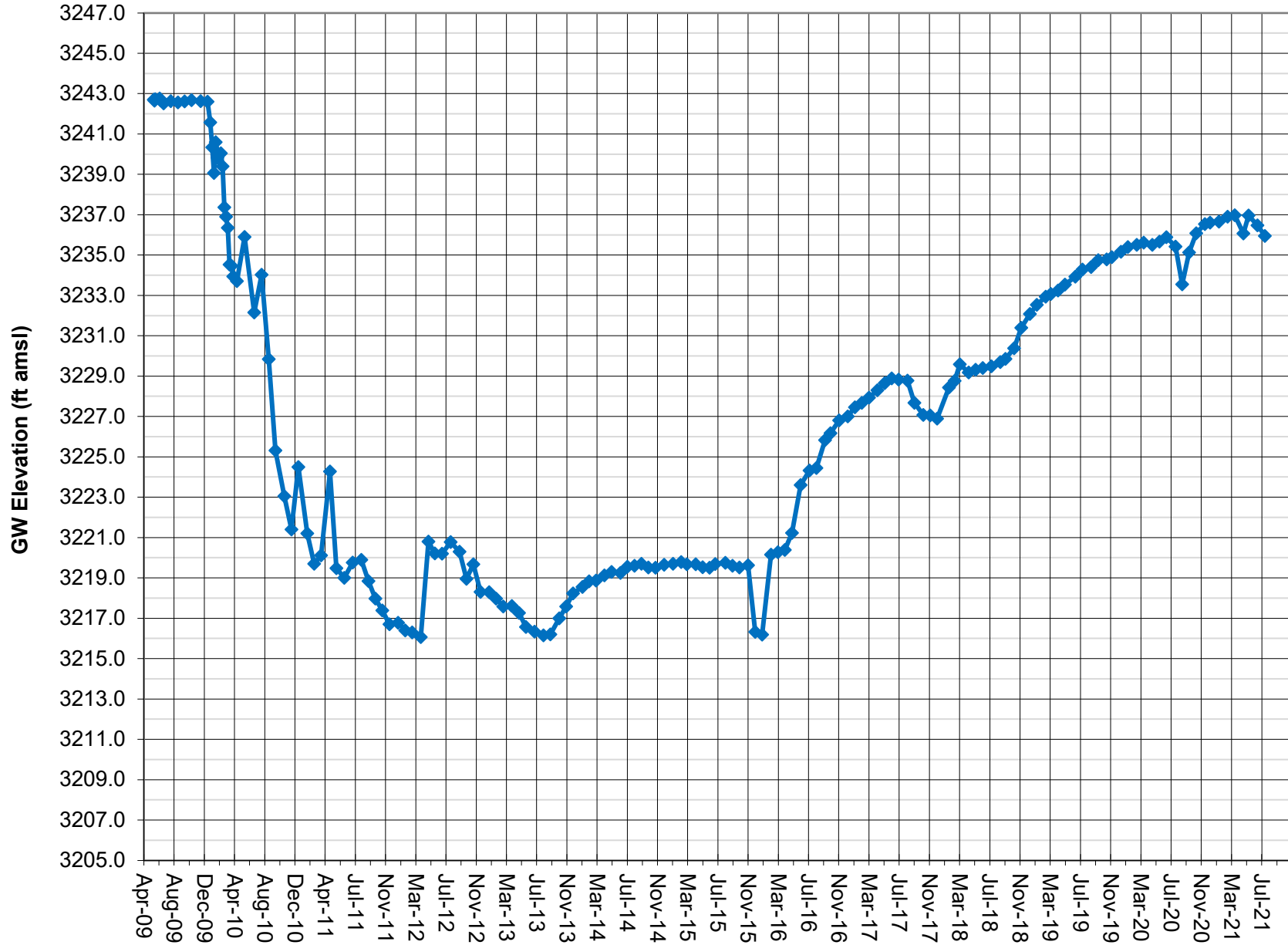
Note: Groundwater elevation data based on manual depth-to-water measurements.
 Screened interval is 180-300 feet.
 Coso Operating Co. initiated Hay Ranch Project pumping on 12/25/09.

GROUNDWATER ELEVATION DATA - Long-Term (Manual) RV081 - Hay Ranch 2B Well



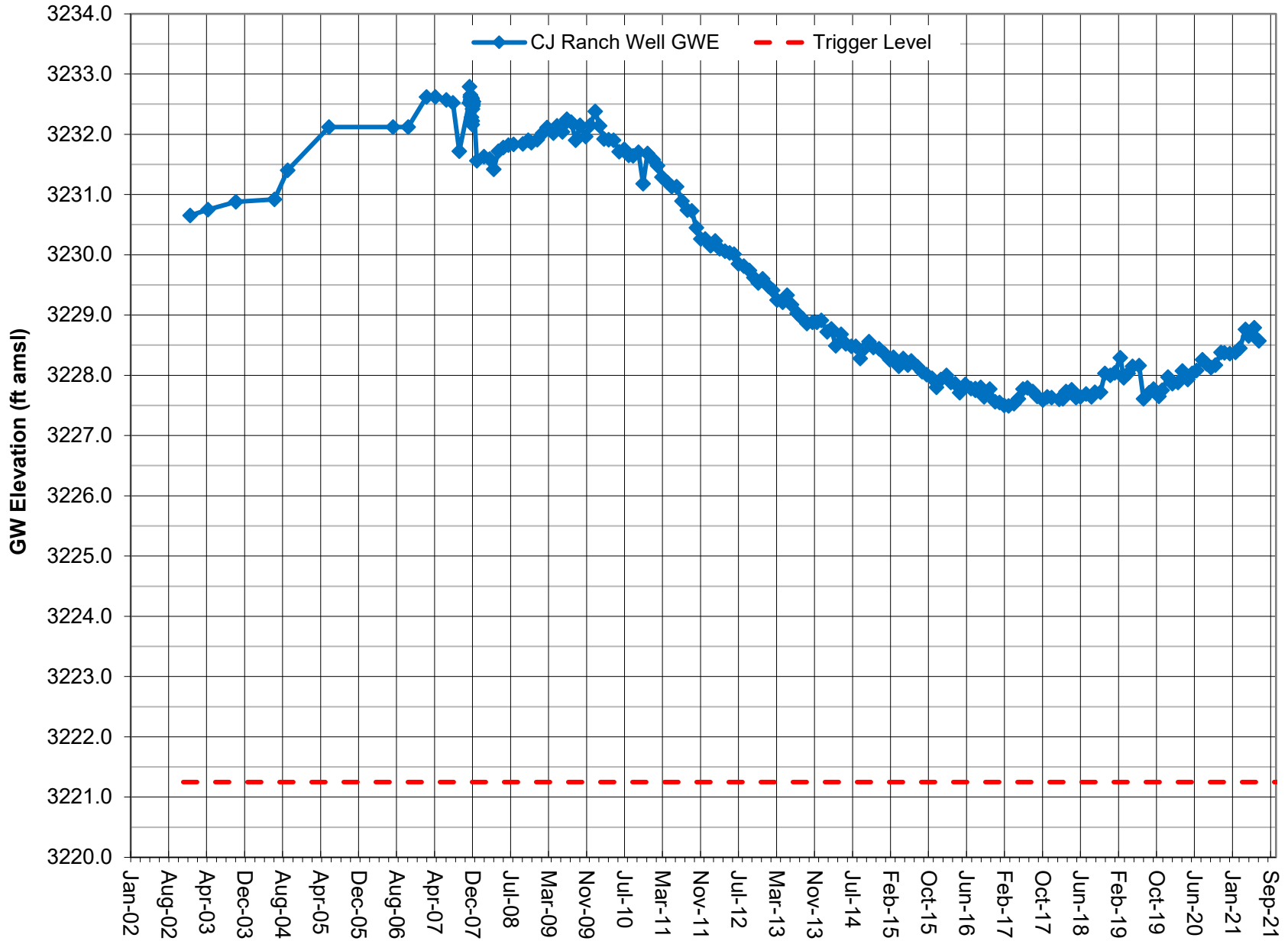
Note: Groundwater elevation data based on manual depth-to-water measurements.
 Screened interval is 519-584 feet.
 Coso Operating Co. initiated Hay Ranch Project pumping on 12/25/09.

GROUNDWATER ELEVATION DATA - Long-Term (Manual) RV082 - Hay Ranch 2C Well



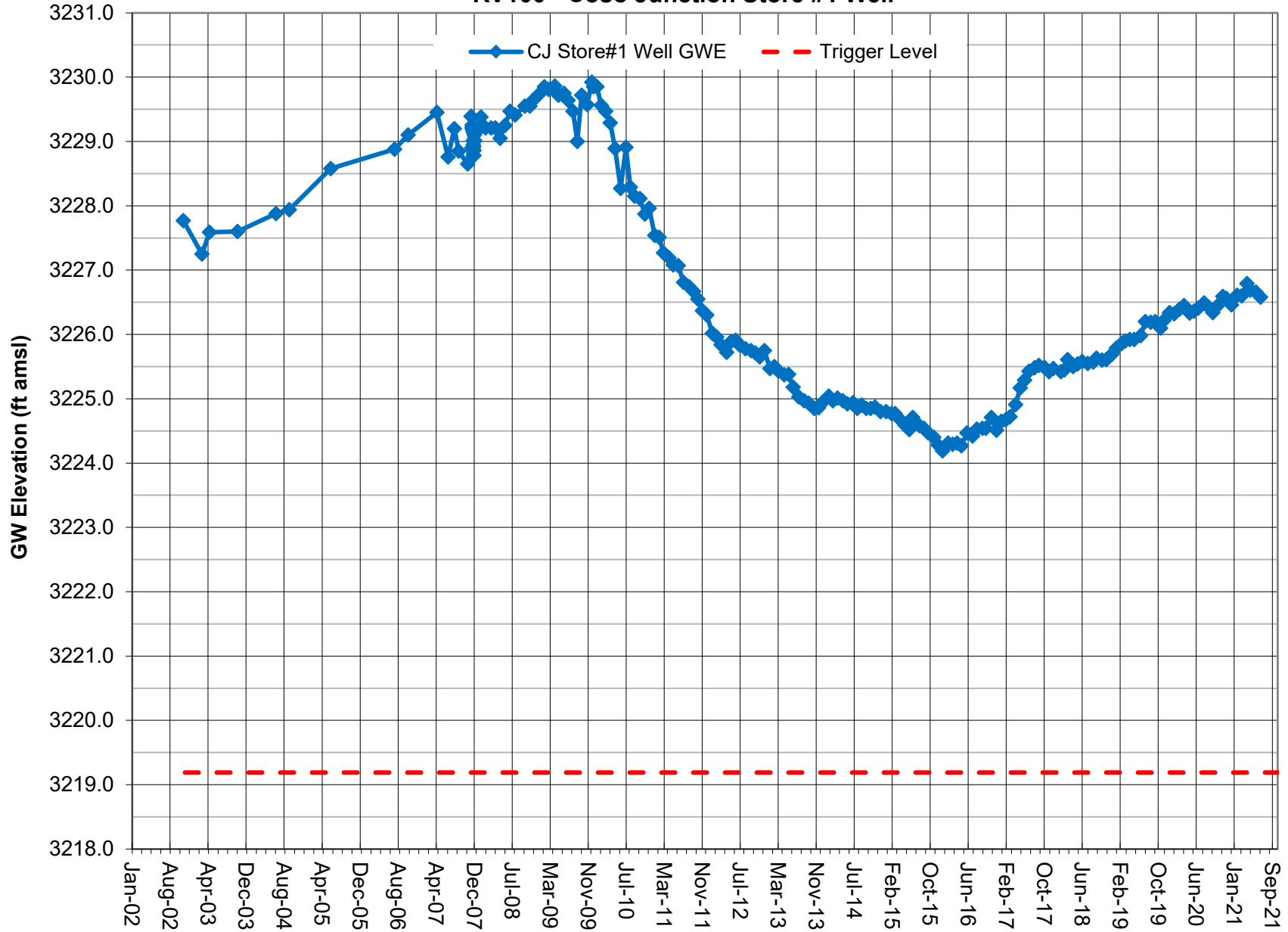
Note: Groundwater elevation data based on manual depth-to-water measurements.
 Screened interval is 370-420 feet.
 Coso Operating Co. initiated Hay Ranch Project pumping on 12/25/09.

GROUNDWATER ELEVATION DATA - Long-Term (Manual) RV090 - Coso Junction Ranch Well



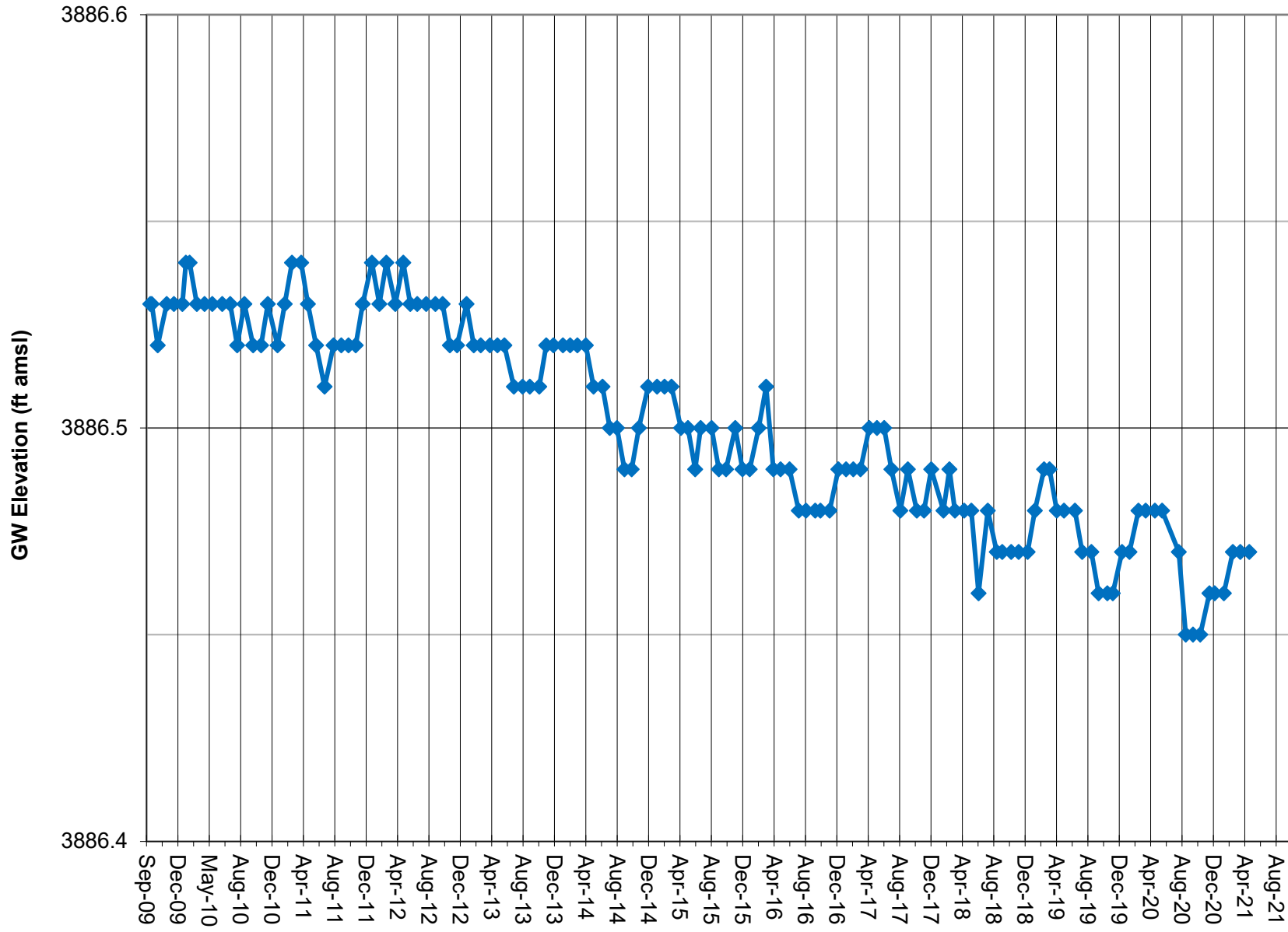
Note: Groundwater elevation data based on manual depth-to-water measurements.
 Coso Operating Co. conducted a pump test on the Hay Ranch South Well in fourth quarter 2007.
 Coso Operating Co. initiated Hay Ranch Project pumping on 12/25/09.

GROUNDWATER ELEVATION DATA - Long-Term (Manual) RV100 - Coso Junction Store #1 Well



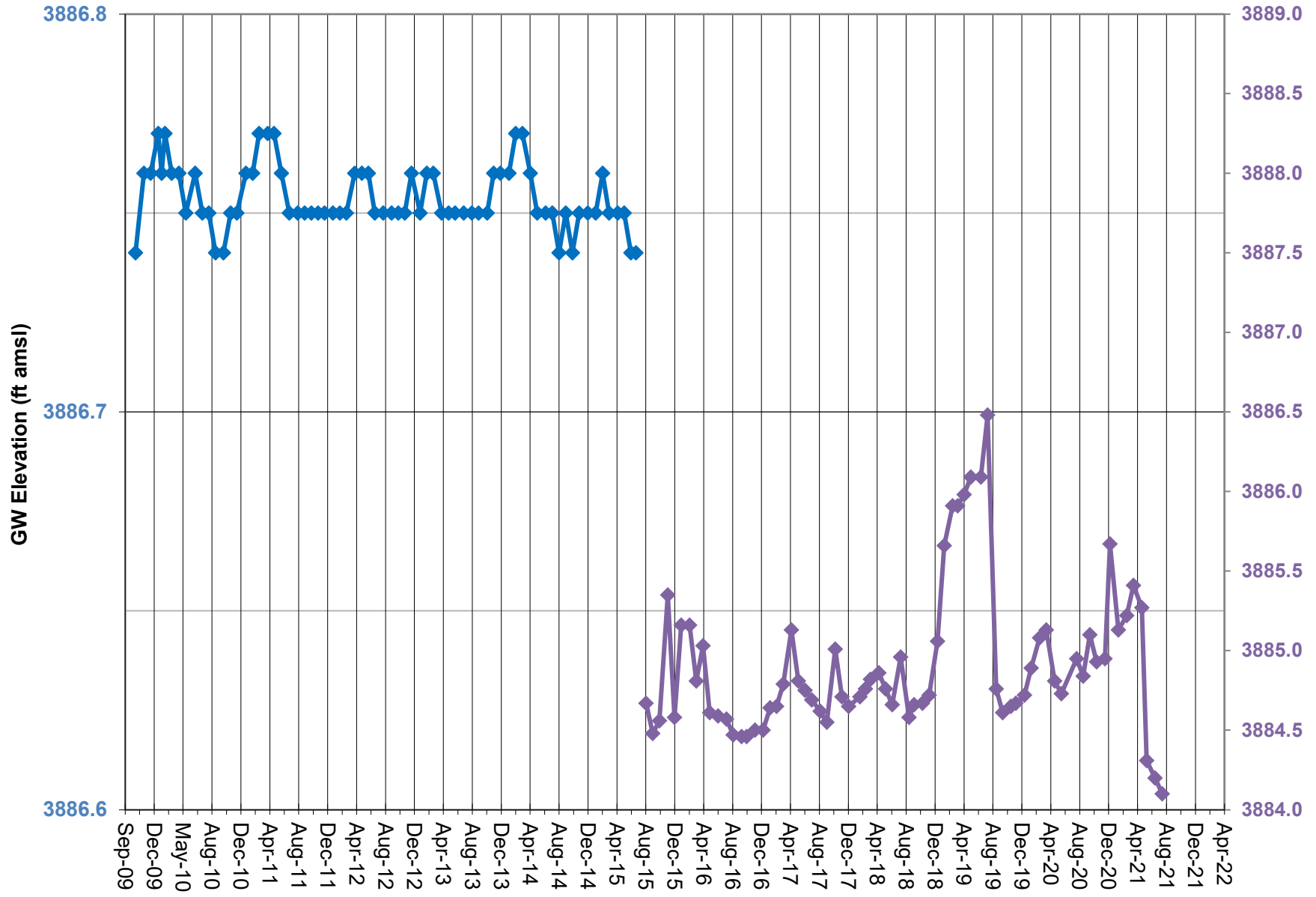
Note: Groundwater elevation data based on manual depth-to-water measurements.
Well is adjacent to actively pumped domestic well.
Coso Operating Co. initiated Hay Ranch Project pumping on 12/25/09.

GROUNDWATER ELEVATION DATA - Long-Term (Manual) RV110 - Davis Ranch North Well



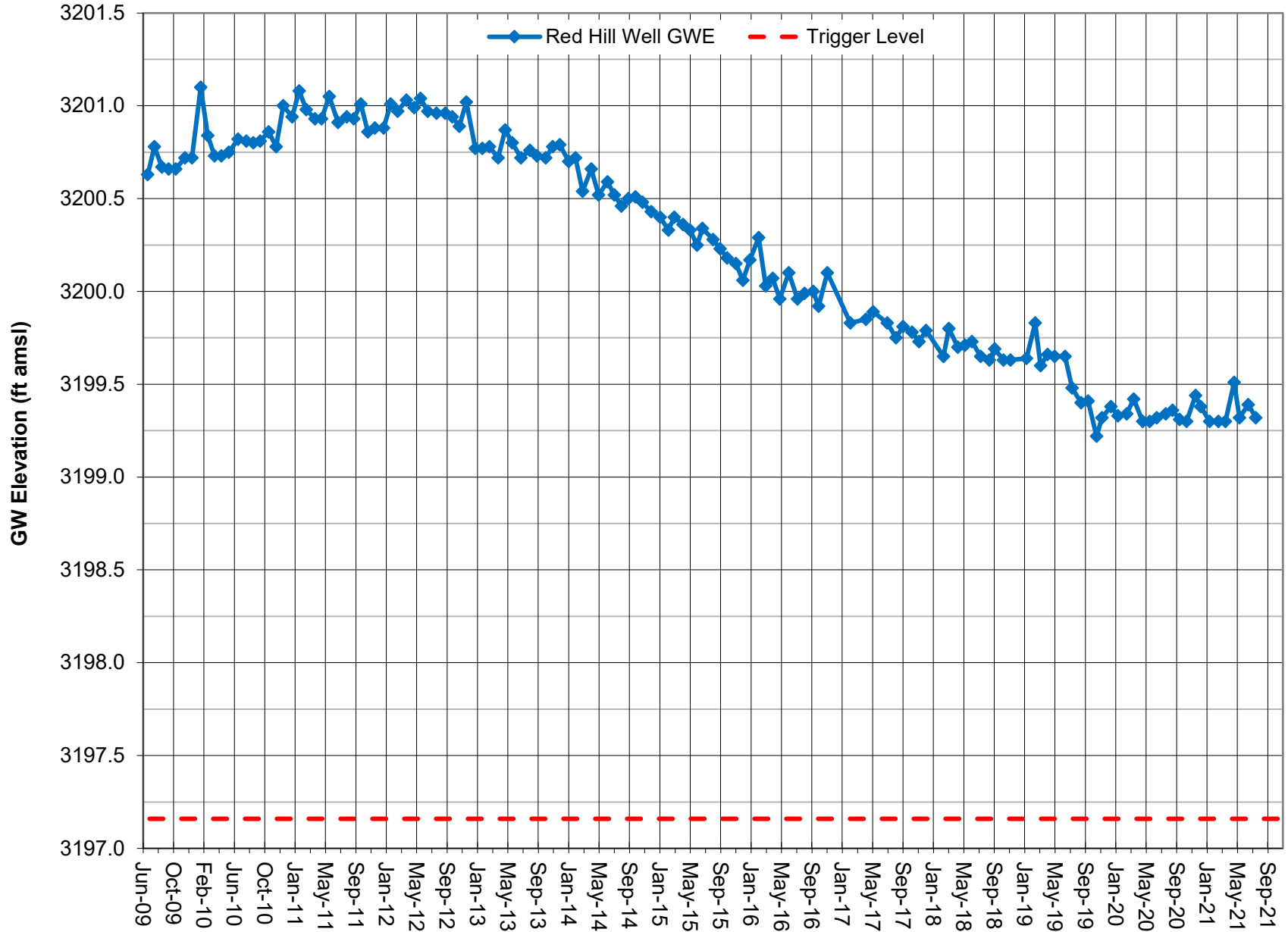
Note: Groundwater elevation data based on manual depth-to-water measurements.
 Coso Operating Co. initiated Hay Ranch Project pumping on 12/25/09.
 Monitoring discontinued in May 2021 due to new in-well infrastructure..

GROUNDWATER ELEVATION DATA - Long-Term (Manual) RV111 - Davis Ranch South Well



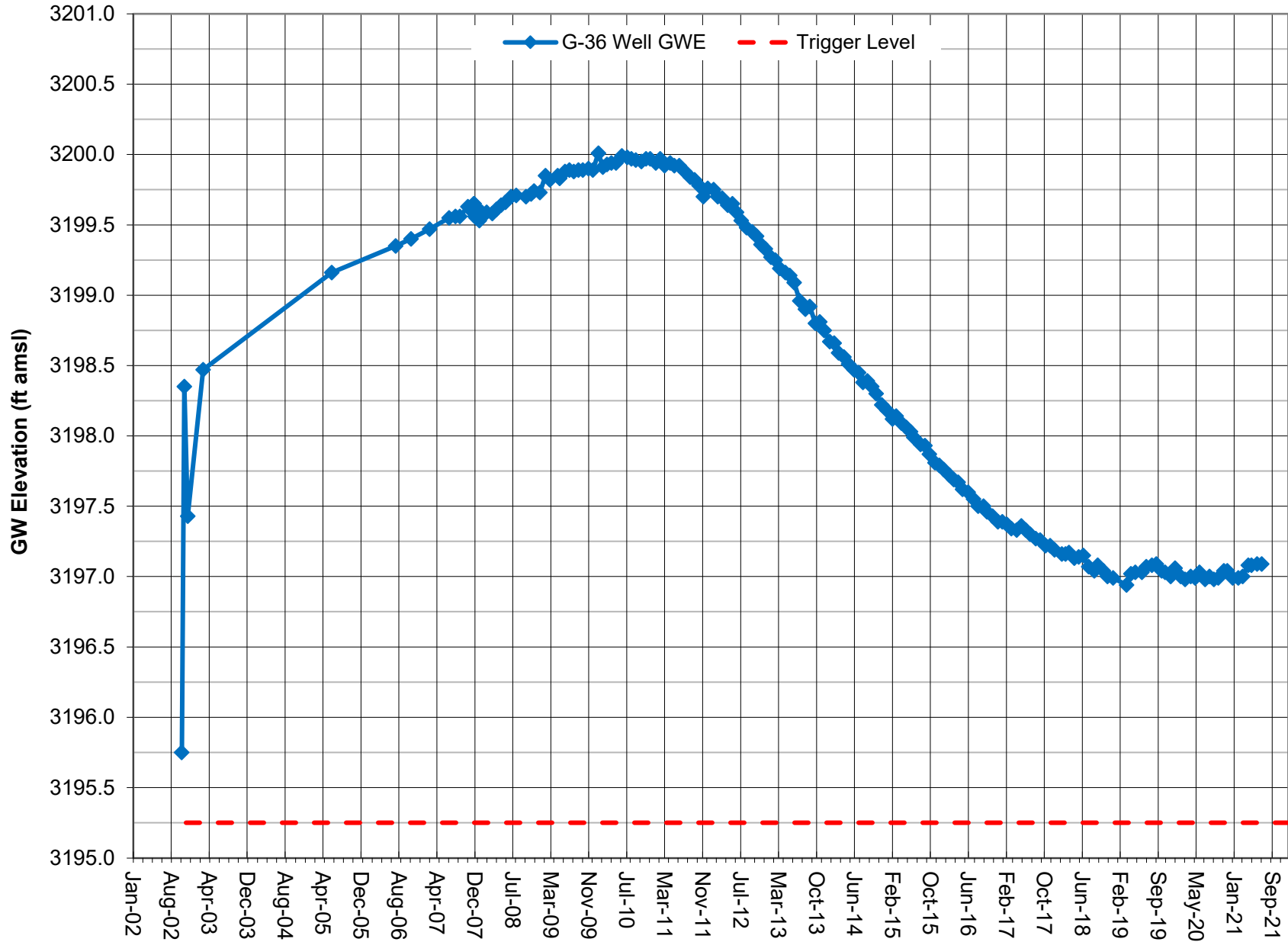
Note: Groundwater elevation data based on manual depth-to-water measurements.
 Water-supply pump installed in DR South in July 2015.
 Note secondary axis for GWEs post-pump installation.

GROUNDWATER ELEVATION DATA - Long-Term (Manual) RV120 - Red Hill Well



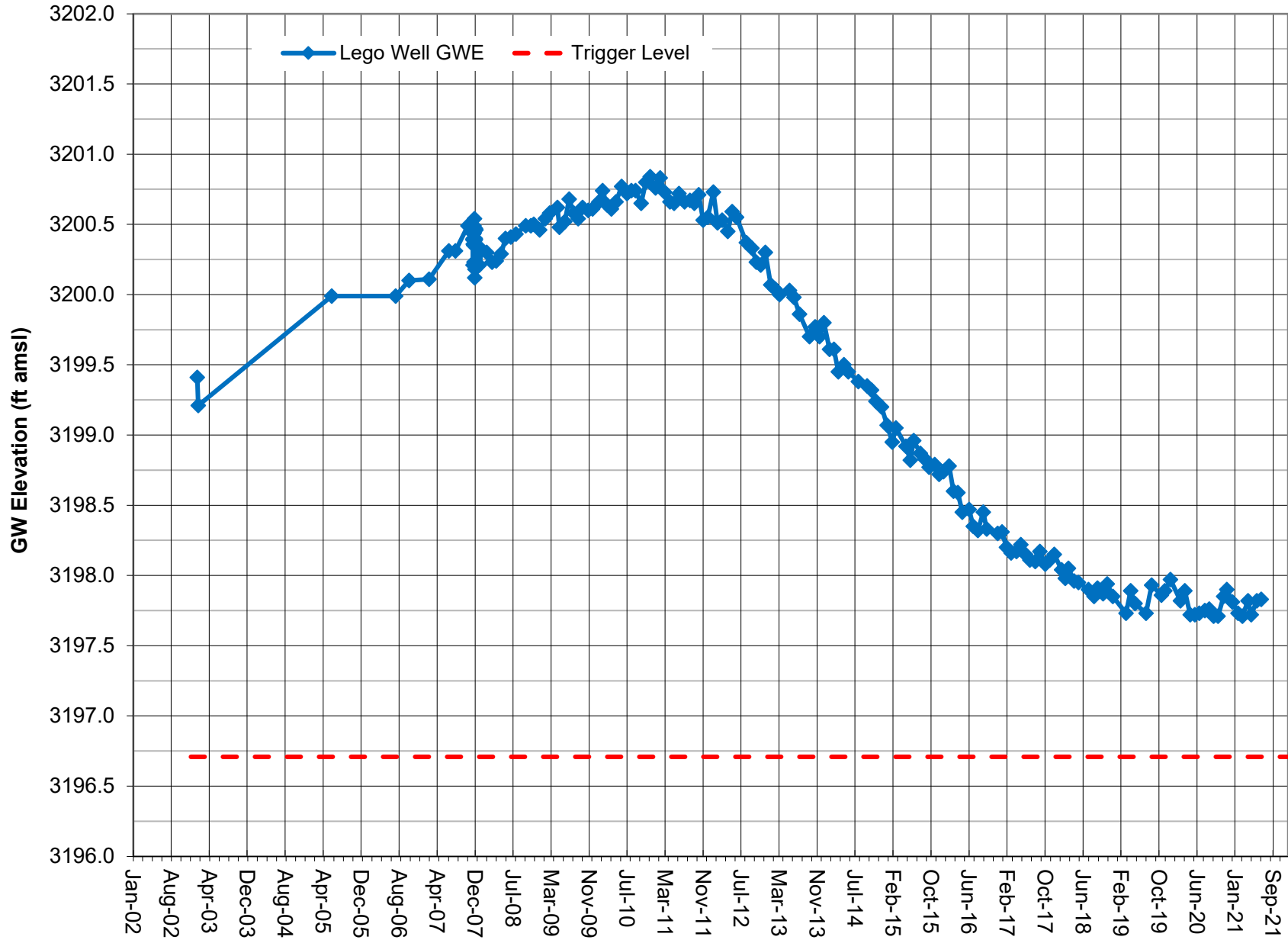
Note: Groundwater elevation data based on manual depth-to-water measurements.
Coso Operating Co. initiated Hay Ranch Project pumping on 12/25/09.

GROUNDWATER ELEVATION DATA - Long-Term (Manual) RV130 - G-36 Well



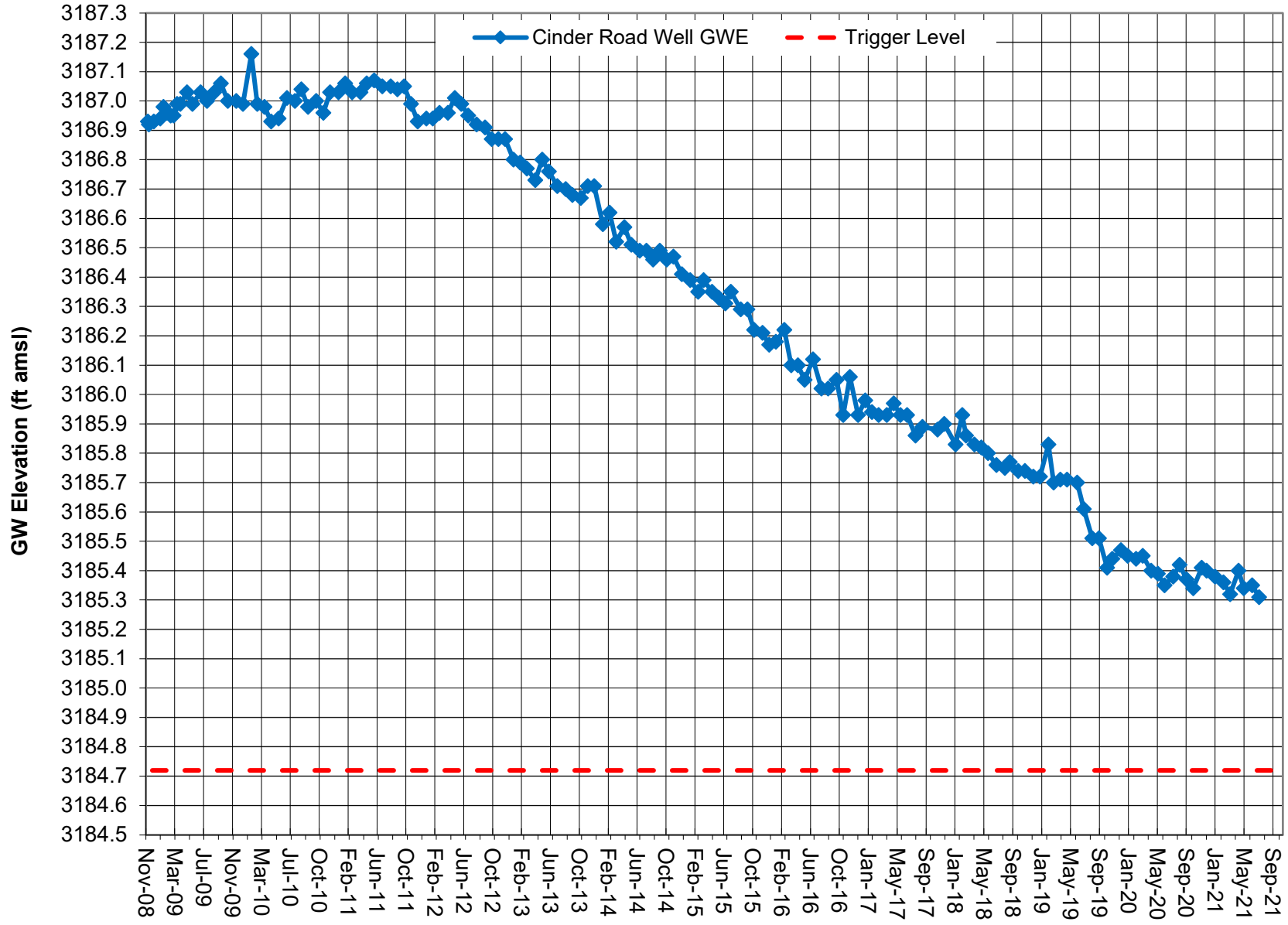
Note: Groundwater elevation data based on manual depth-to-water measurements.
 Coso Operating Co. conducted a pump test on the Hay Ranch South Well in fourth quarter 2007.
 Coso Operating Co. initiated Hay Ranch Project pumping on 12/25/09.

GROUNDWATER ELEVATION DATA - Long-Term (Manual) RV140 - Lego Well



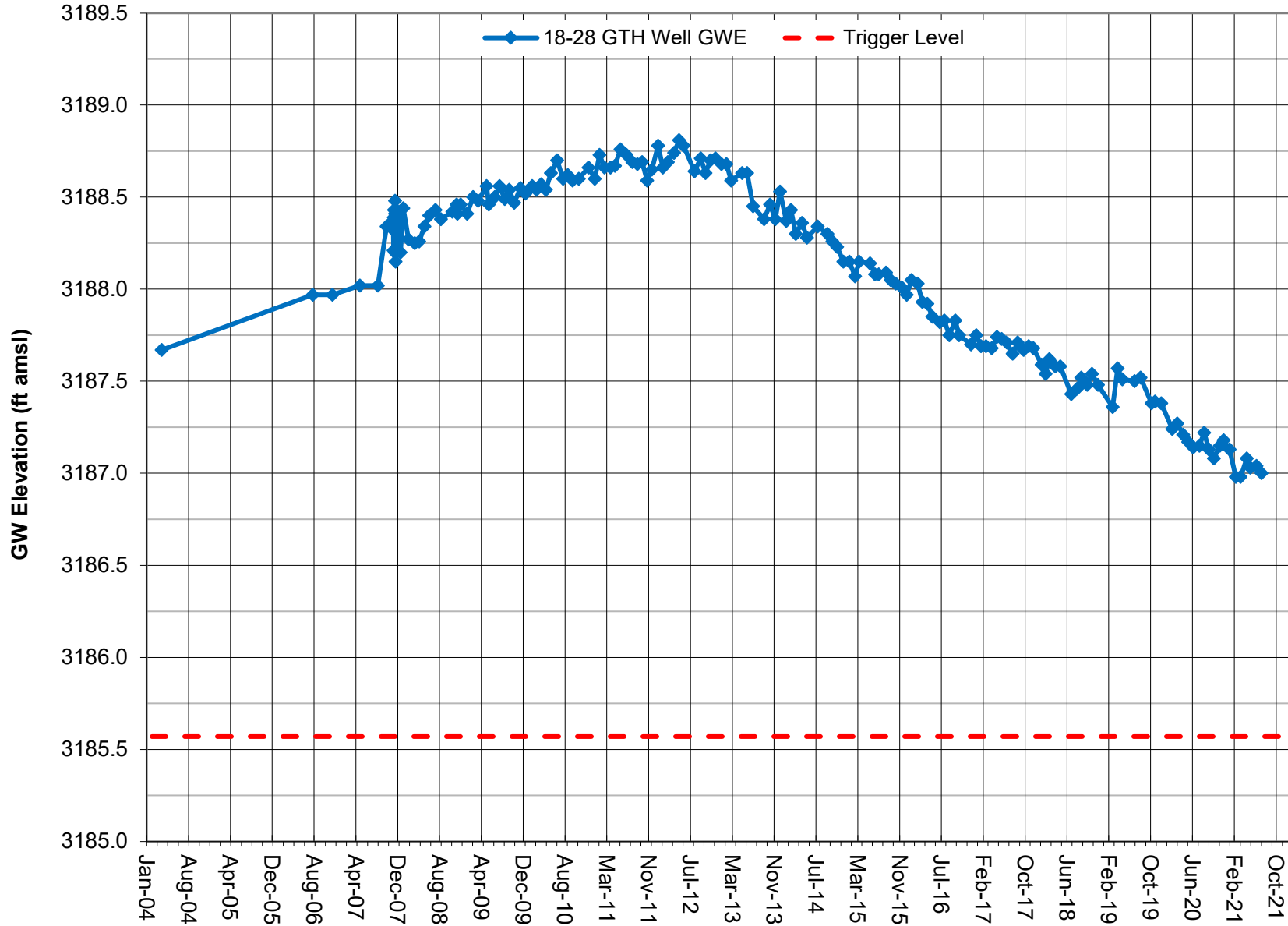
Note: Groundwater elevation data based on manual depth-to-water measurements.
 Coso Operating Co. conducted a pump test on the Hay Ranch South Well in fourth quarter 2007.
 Coso Operating Co. initiated Hay Ranch Project pumping on 12/25/09.

GROUNDWATER ELEVATION DATA - Long-Term (Manual) RV150 - Cinder Road Well



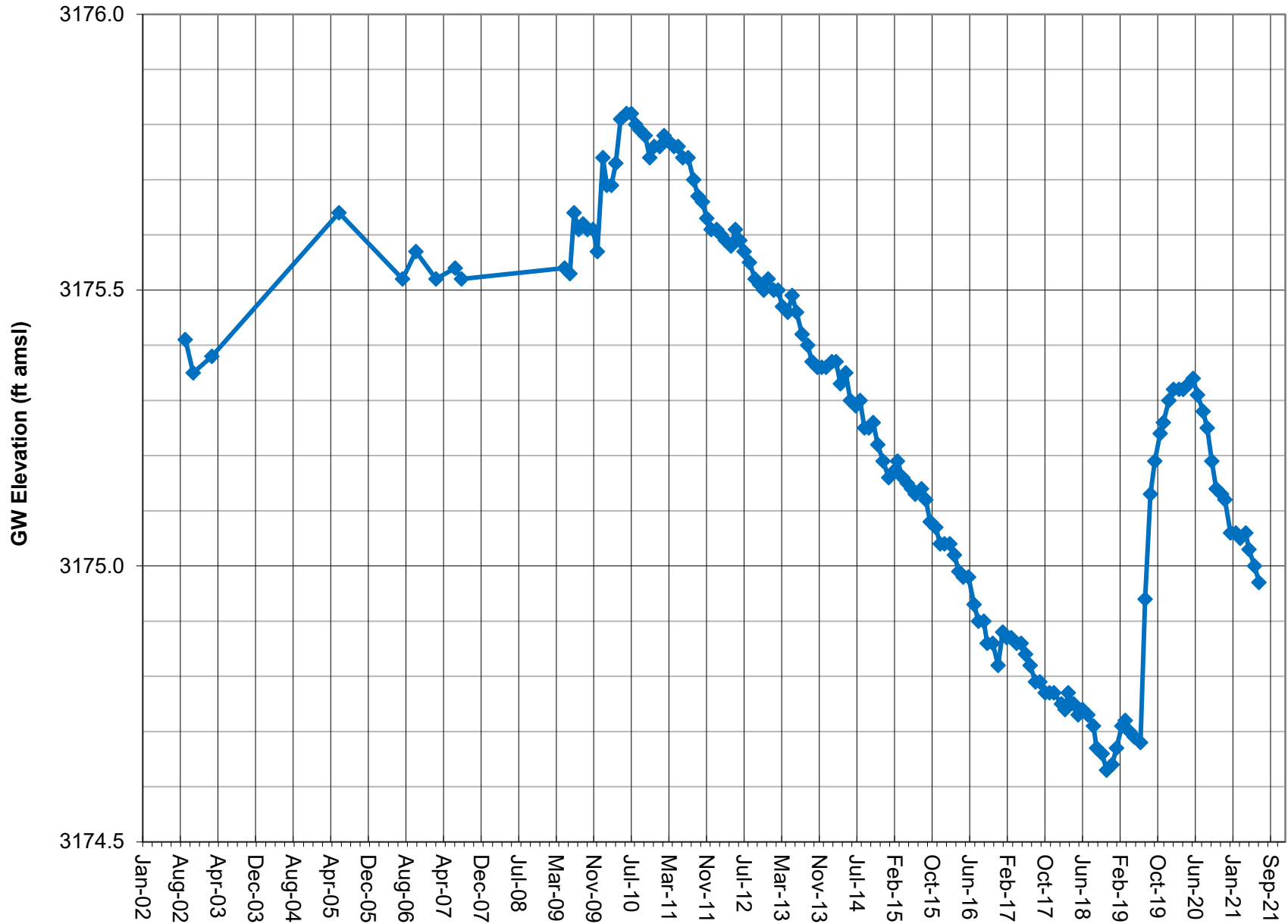
Note: Groundwater elevation data based on manual depth-to-water measurements.
Coso Operating Co. initiated Hay Ranch Project pumping on 12/25/09.

GROUNDWATER ELEVATION DATA - Long-Term (Manual) RV160 - 18-28 GTH Well



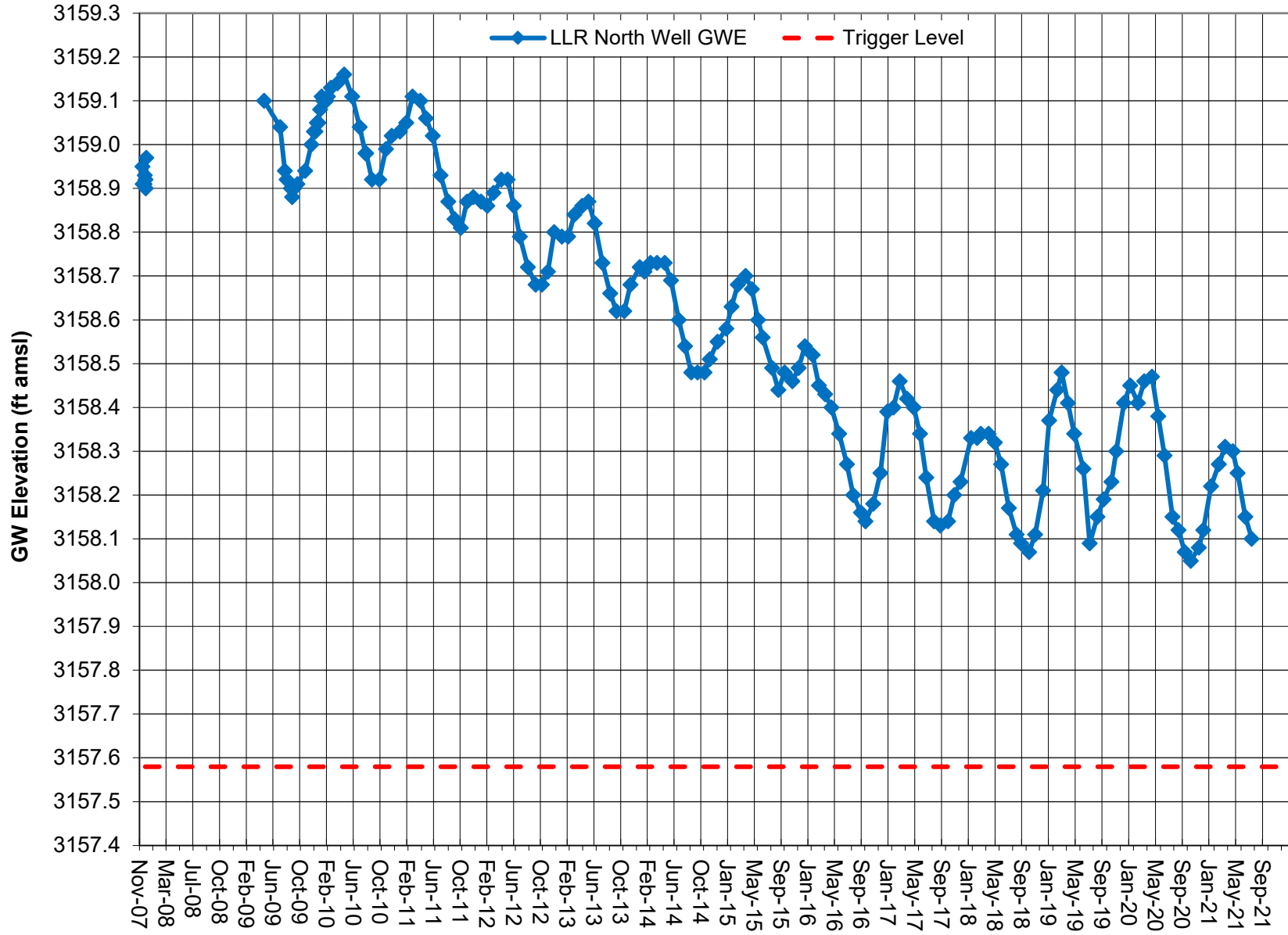
Note: Groundwater elevation data based on manual depth-to-water measurements.
 Coso Operating Co. conducted a pump test on the Hay Ranch South Well in fourth quarter 2007.
 Coso Operating Co. initiated Hay Ranch Project pumping on 12/25/09.

GROUNDWATER ELEVATION DATA - Long-Term (Manual) RV170 - Fossil Falls Well



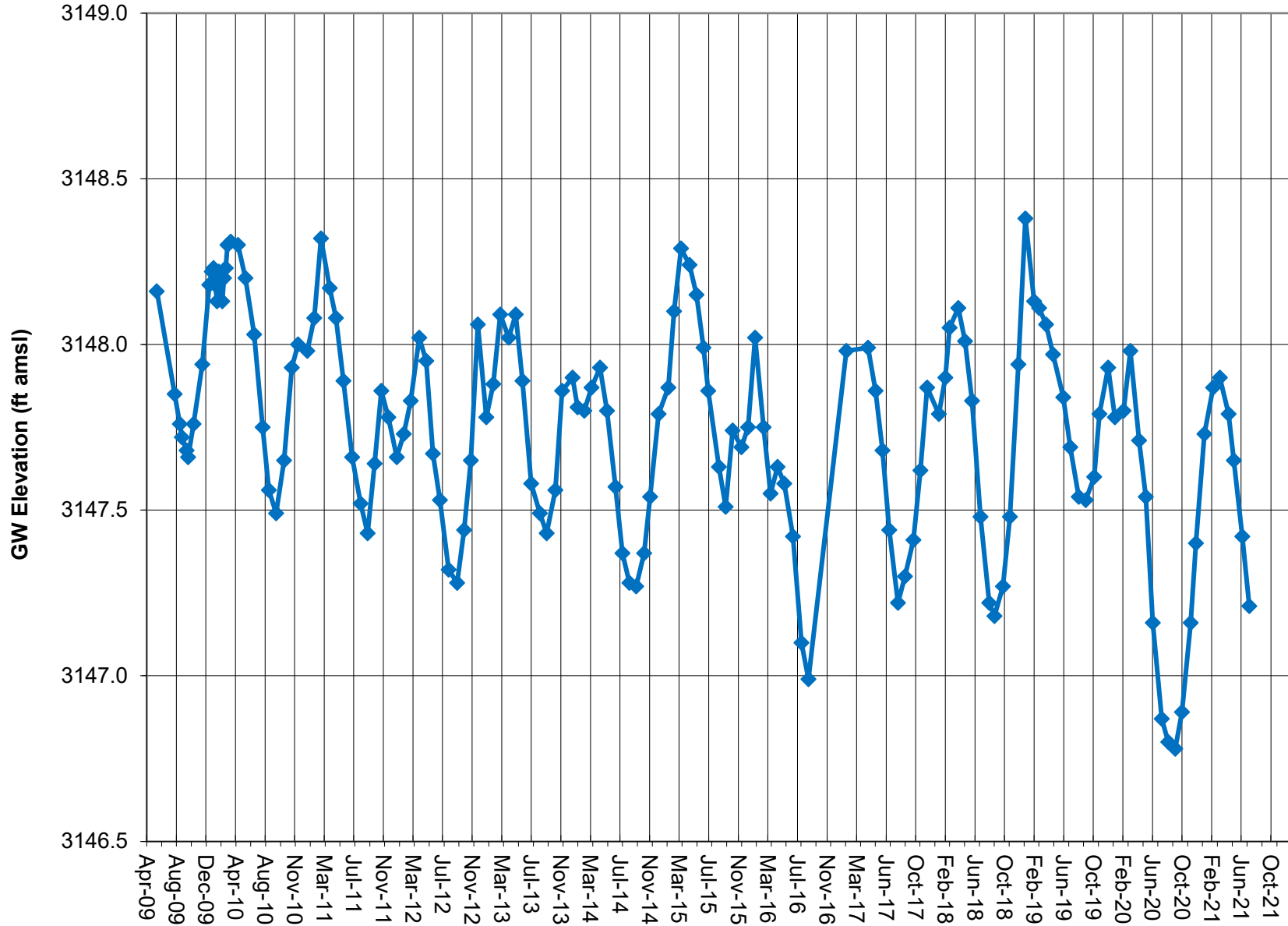
Note: Groundwater elevation data based on manual depth-to-water measurements.
Coso Operating Co. initiated Hay Ranch Project pumping on 12/25/09.

GROUNDWATER ELEVATION DATA - Long-Term (Manual) RV180 - Little Lake Ranch North Well



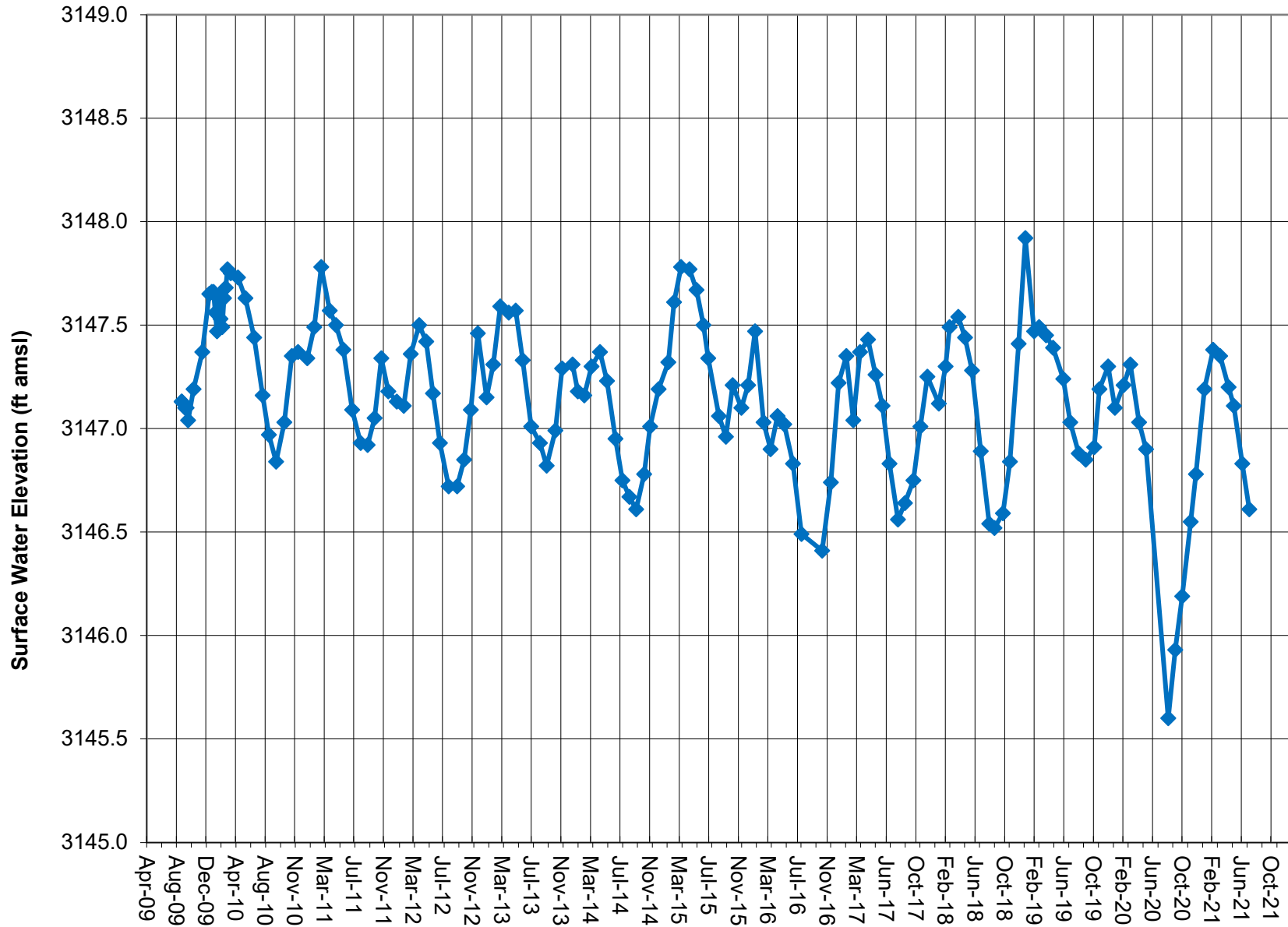
Note: Groundwater elevation data based on manual depth-to-water measurements.
Coso Operating Co. initiated Hay Ranch Project pumping on 12/25/09.

GROUNDWATER ELEVATION DATA - Long-Term (Manual) RV210 - Little Lake Ranch Dock Well



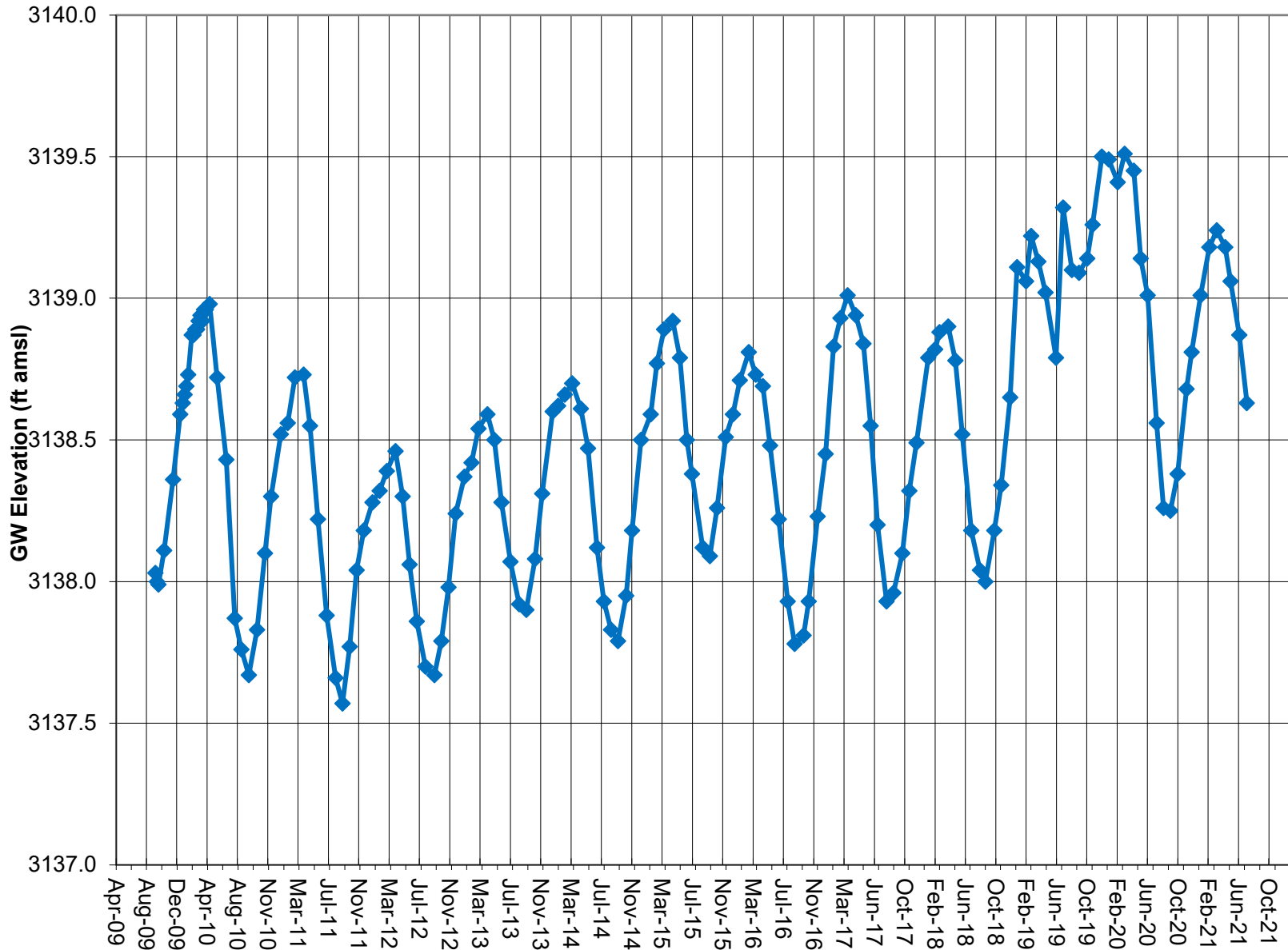
Note: Groundwater elevation data based on manual depth-to-water measurements. Lines between data points are approximations.
Coso Operating Co. initiated Hay Ranch Project pumping on 12/25/09.

**SURFACE WATER ELEVATION DATA - Long-Term (Manual)
RV220 - LLR Stilling Well (lake surface)**



Note: Surface water elevation data based on manual depth-to-water measurements. Lines between data points are approximations.

GROUNDWATER ELEVATION DATA - Long-Term (Manual) RV260 - Little Lake Ranch Hotel Well



Note: Groundwater elevation data based on manual depth-to-water measurements.
Coso Operating Co. initiated Hay Ranch Project pumping on 12/25/09.