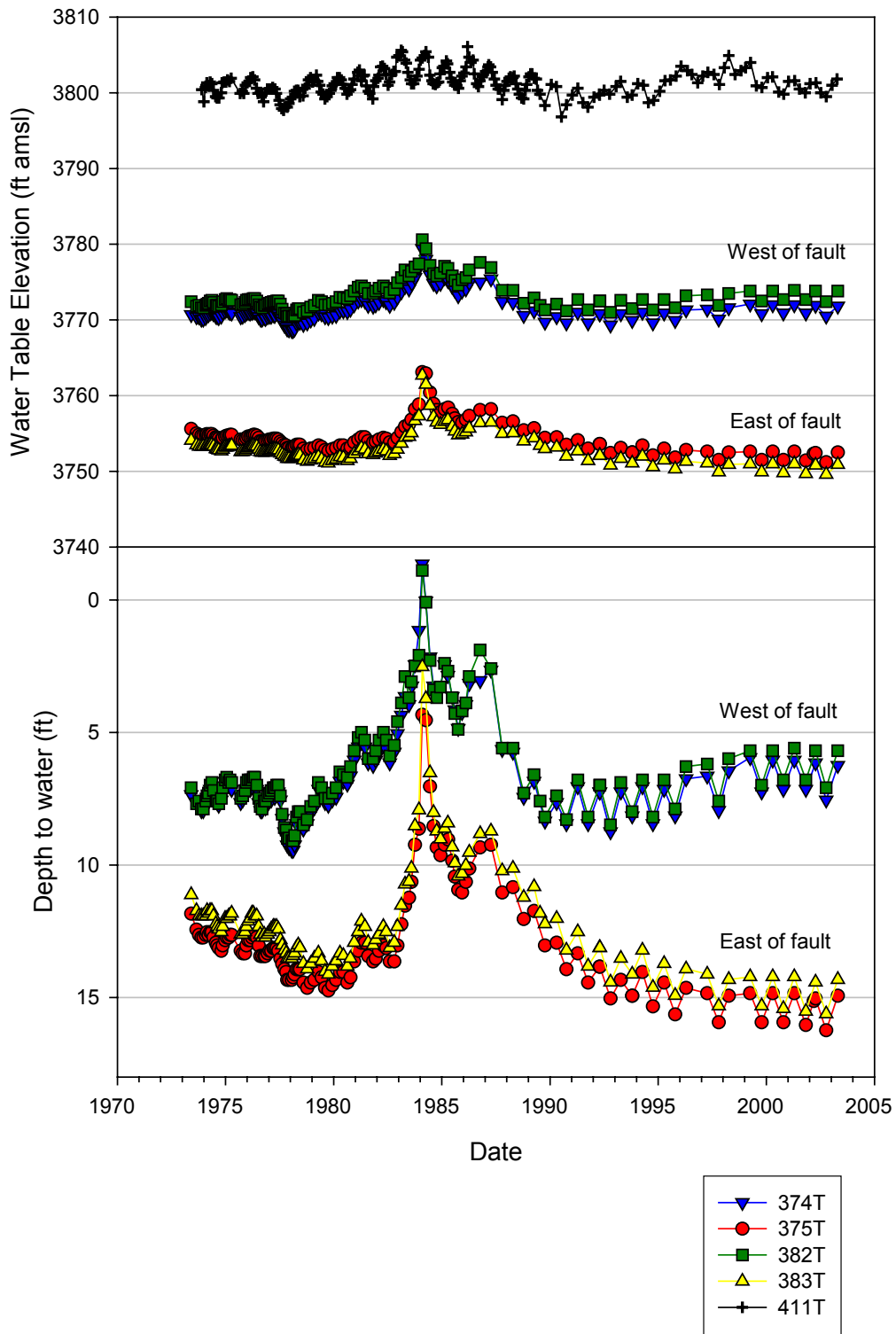


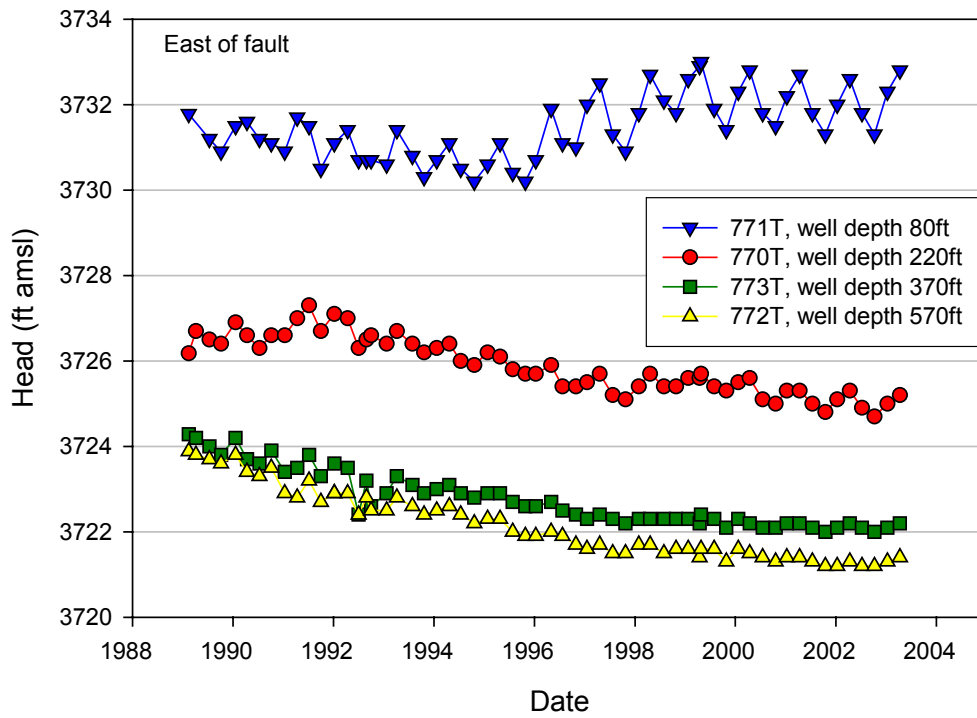
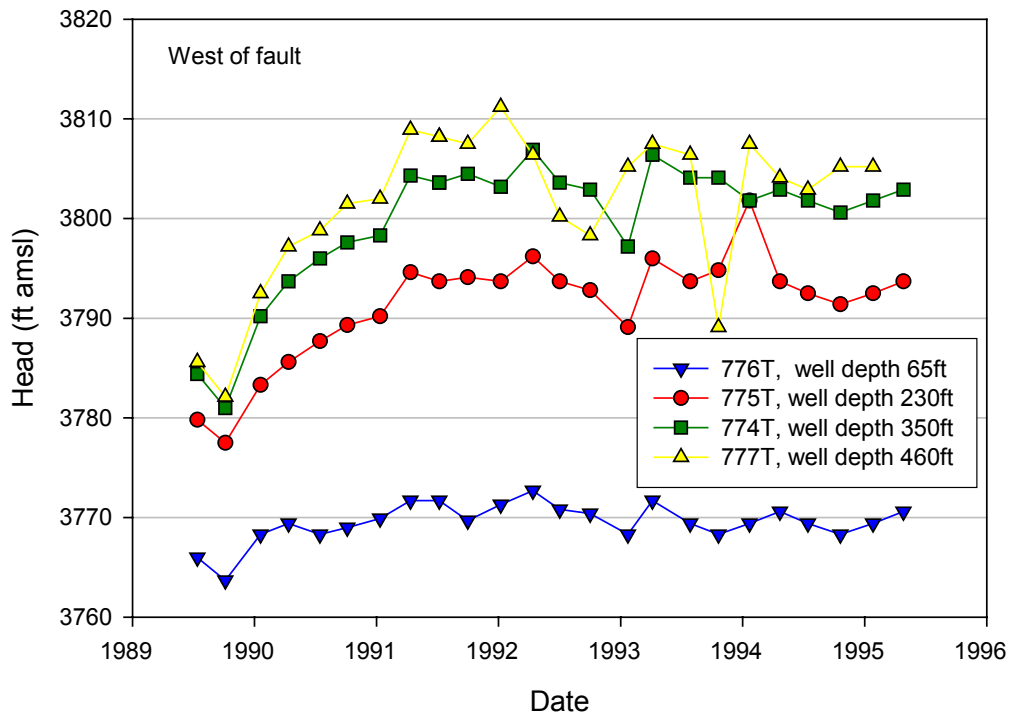


APPENDIX H

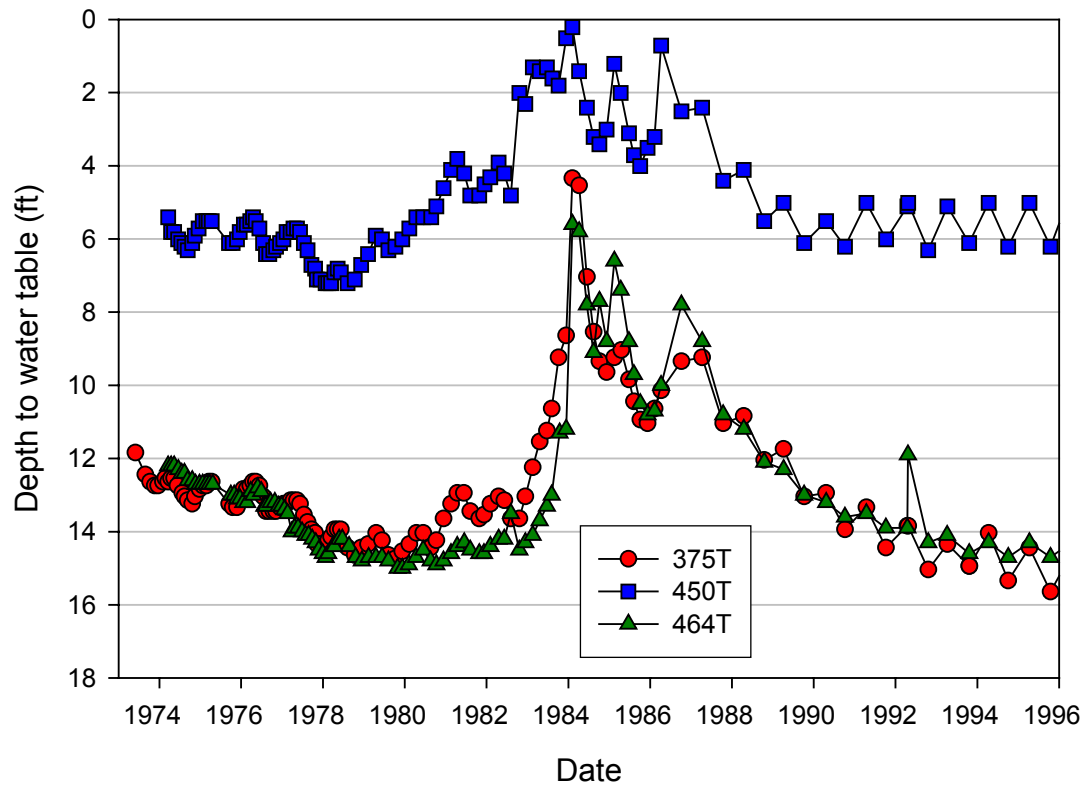
Hydrographs for Wells near IND102 AOI



Water table elevation (top graph) and depth to water (bottom graph) of four shallow wells immediately east and west of the Owens Valley fault and water table elevation of one well (411T) located near Independence.



Hydraulic head of two multicompletion wells installed west (top graph) and east (bottom graph) of the Owens Valley fault near Mazourka Canyon Road.



Depth to water in three shallow test wells sampled for geochemistry near the Owens Valley fault and spring Ind 102.