

Owens Valley Annual Operations Plan 2023-24 Runoff Year

Los Angeles Department of Water and Power

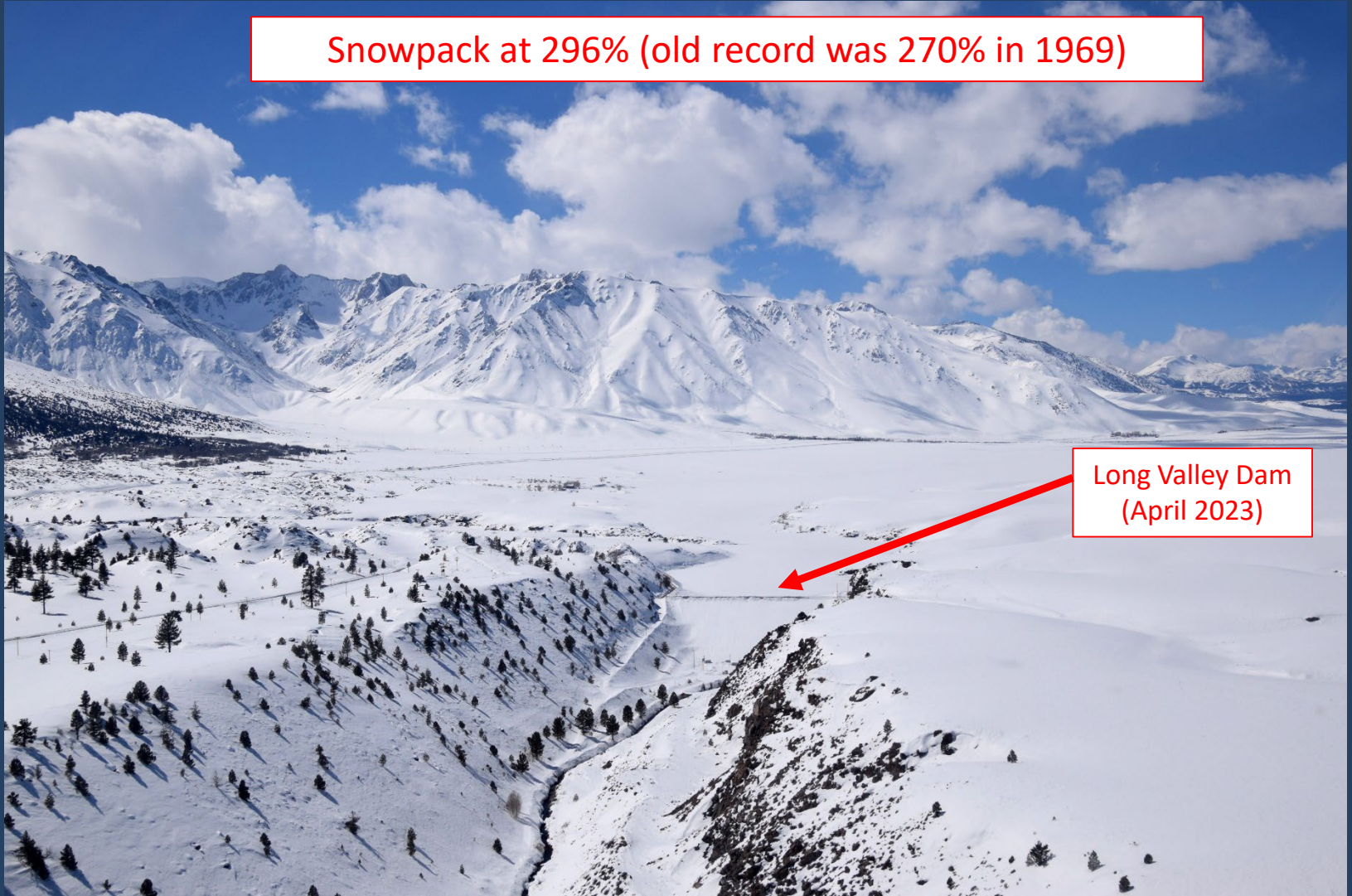
Water Operations Division

Water Agreement Process

- According to Inyo/LA **Water Agreement** procedure, LADWP submits a draft Operations Plan to the ICWD by April 20th of each year.
- Inyo County provides comments on the Plan within 10 days.
- LADWP finalizes the Plan within 10 days of discussing the comments with ICWD staff at a Technical Group meeting.

Snowpack at 296% (old record was 270% in 1969)

Long Valley Dam
(April 2023)



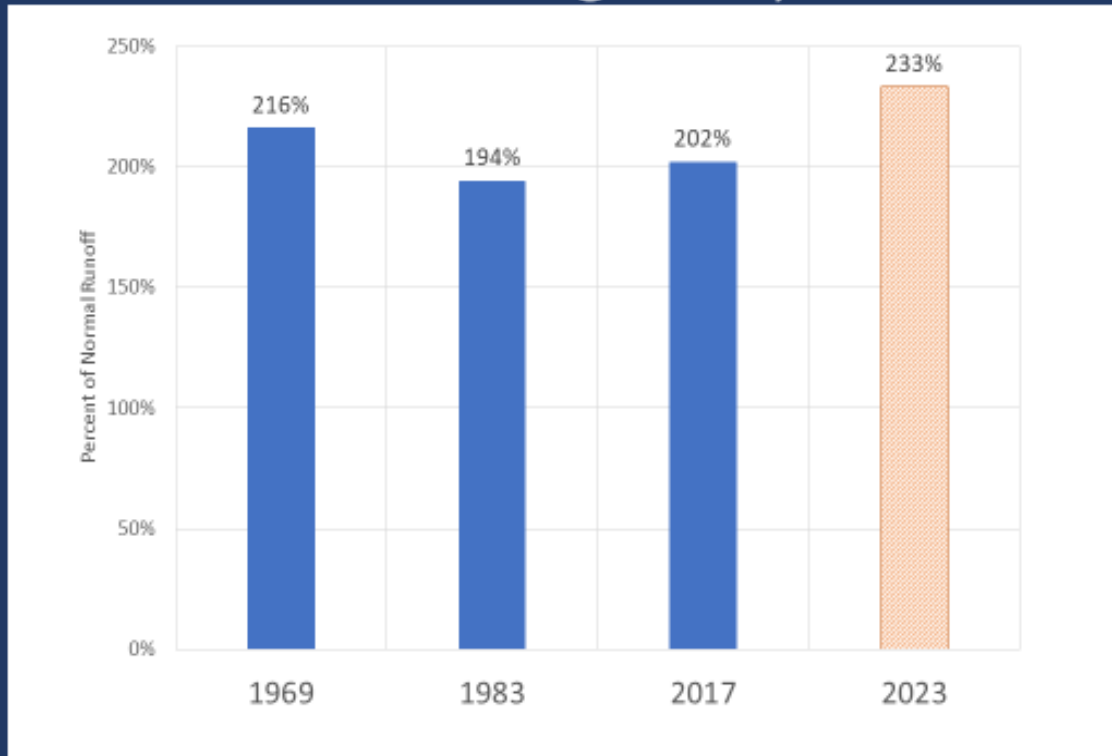
Snowpack & Runoff Forecast



Runoff Forecast: 233% of normal

Snowpack & Runoff Forecast

2023 Runoff vs. highest years on record



ON/OFF Status of Vegetation Monitoring Sites (April 2023)

Vegetation Monitoring Site	April 2023 ON/OFF Status	Vegetation Monitoring Site	April 2023 ON/OFF Status
LW1	ON	TS1	ON
LW2	ON	TS2	ON
LW3	ON	TS3	ON
BP1	ON	TS4	ON
BP2	OFF	IO1	OFF
BP3	ON	IO2	ON
BP4	ON	SS1	ON
TA3	ON	SS2	OFF
TA4	ON	SS3	ON
TA5	ON	SS4	ON
TA6	ON	BG2	ON

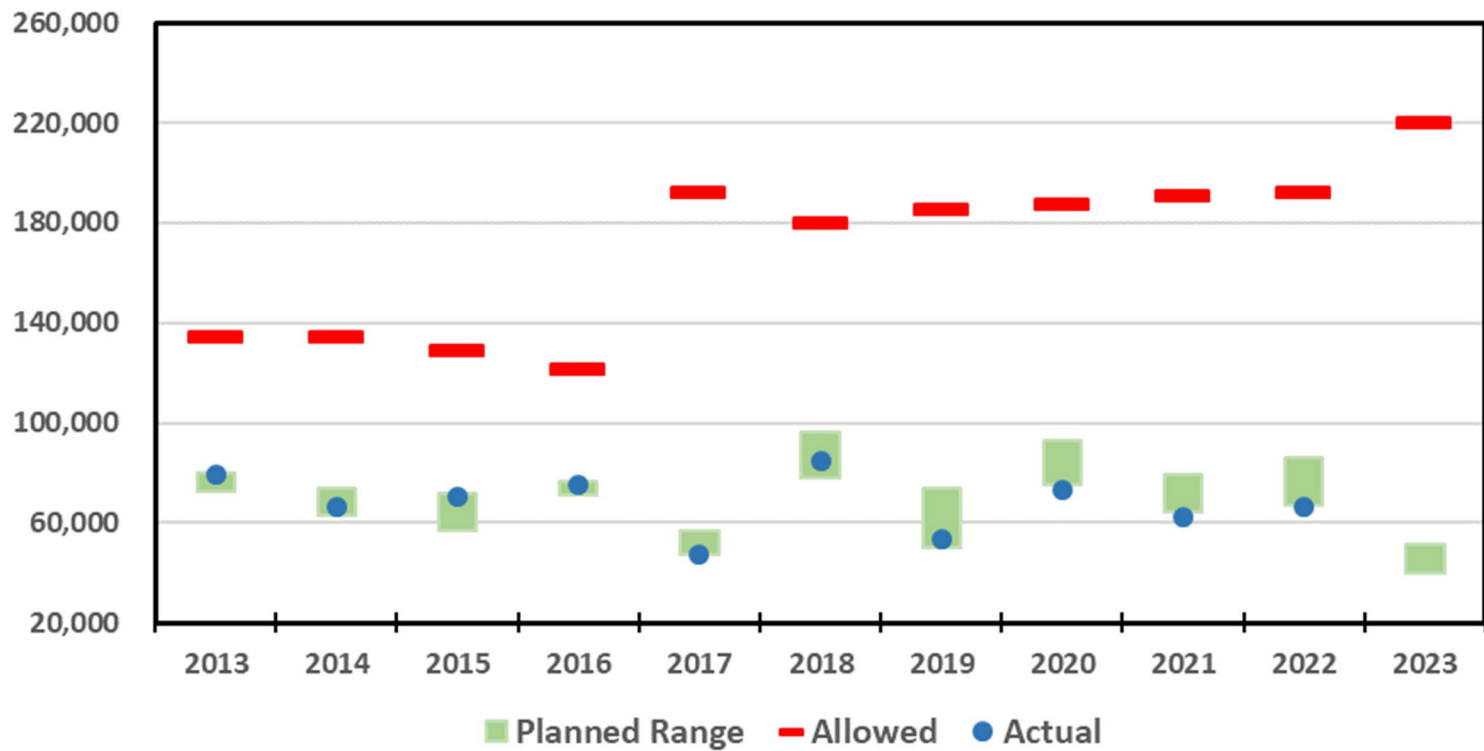
LADWP can pump wells associated with monitoring sites in ON status

Planned 2023-24 Pumping

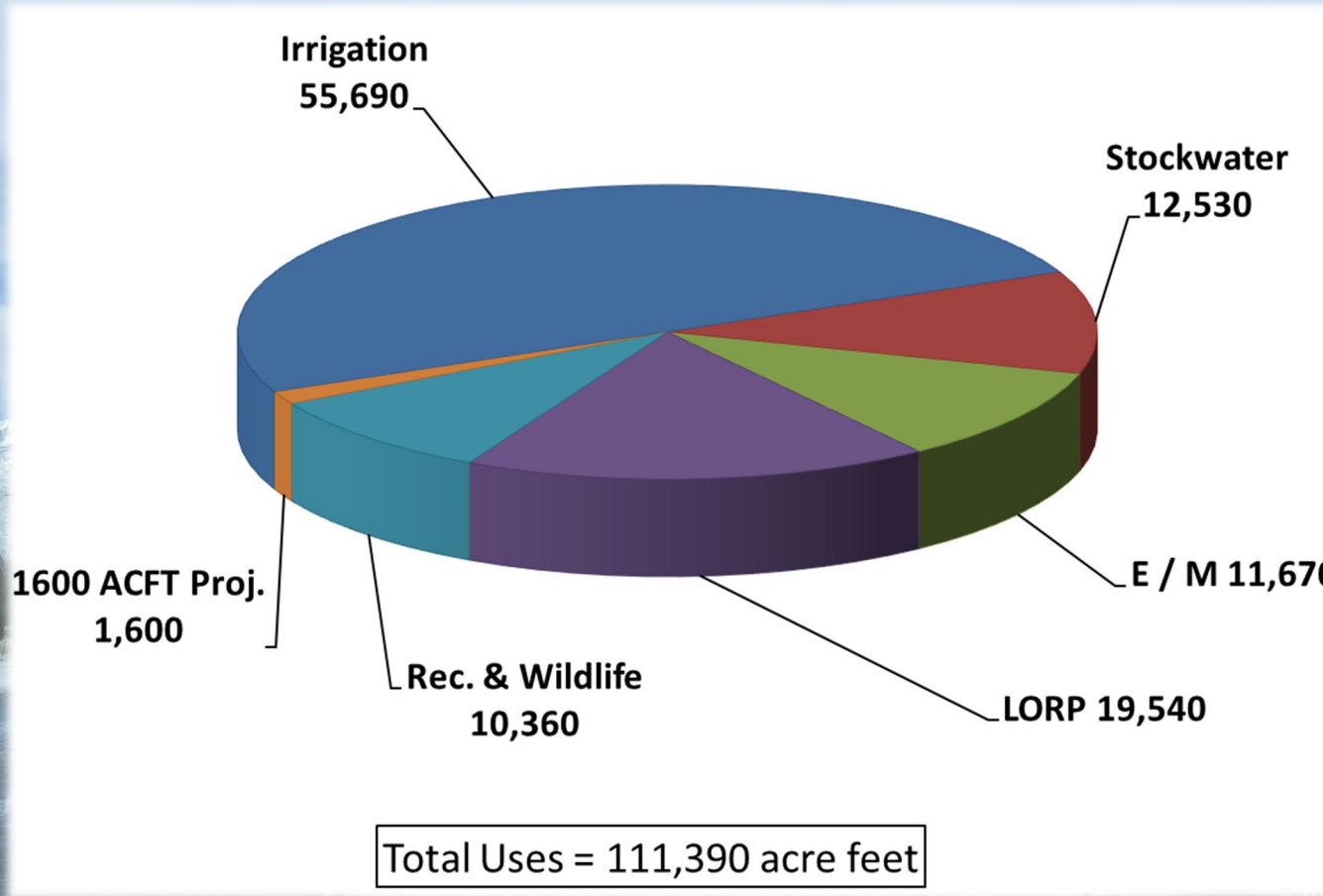
Wellfield	Available Pumping Capacity (af)	Planned Pumping (af)
Laws	44,380	2,550-5,040
Bishop	18,310	3,180-3,990
Big Pine	50,510	16,200-20,400
Taboose-Aberdeen	50,925	1,200-3,900
Thibaut-Sawmill	17,134	8,000
Independence-Oak	14,517	6,900-7,200
Symmies-Shepherd	20,241	1,200-1,740
Bairs-George	2,830	0-300
Lone Pine	990	900
Total Owens Valley	219,837	40,130-51,470

Table 1.3 of Annual Operations Plan

Planned Range, Allowed, and Actual Pumping



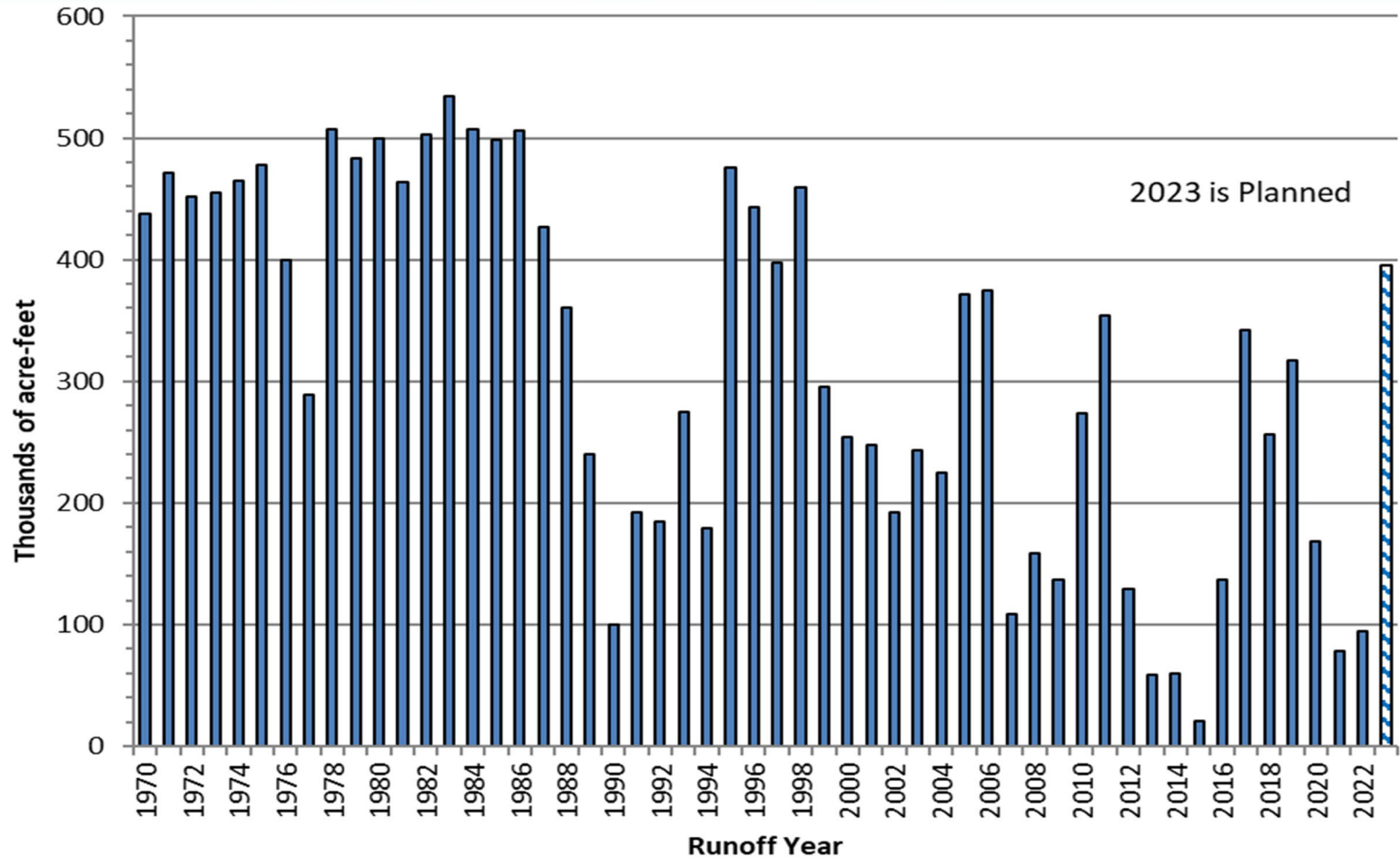
Water Supply to Uses in Owens Valley by LADWP



An average additional 60,000 AF per year is supplied for Dust Mitigation at Owens Lake

Water Export from Owens Valley

Planned Export from Owens Valley is 395,000 acre-feet



Operations

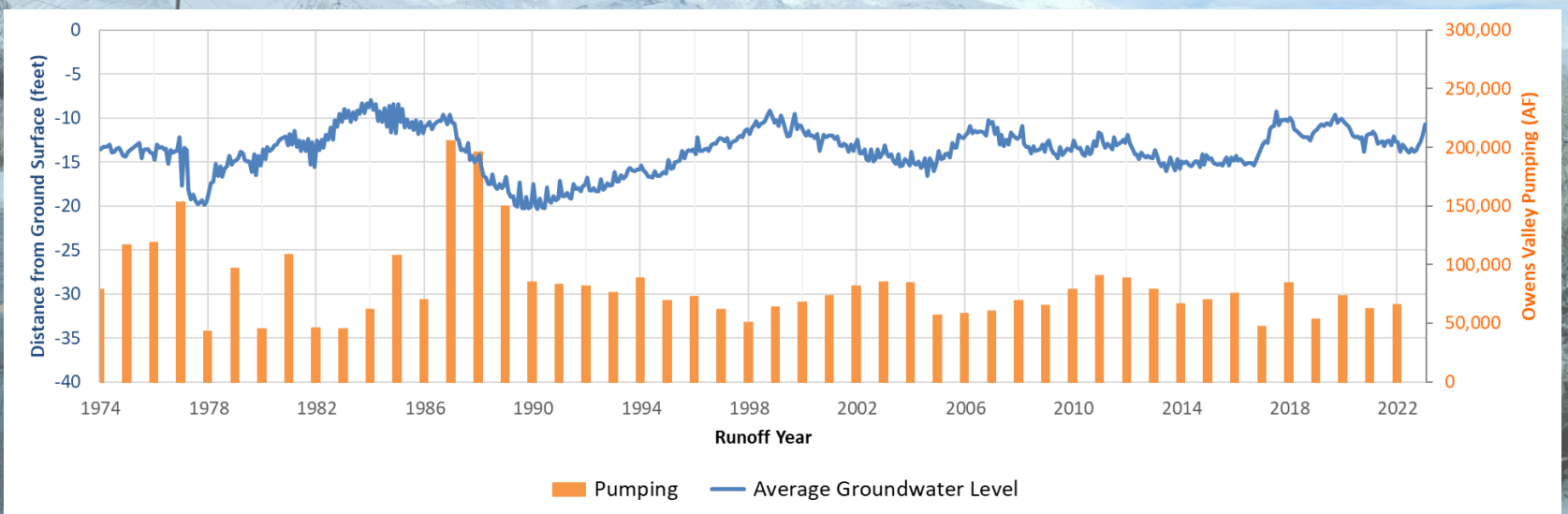
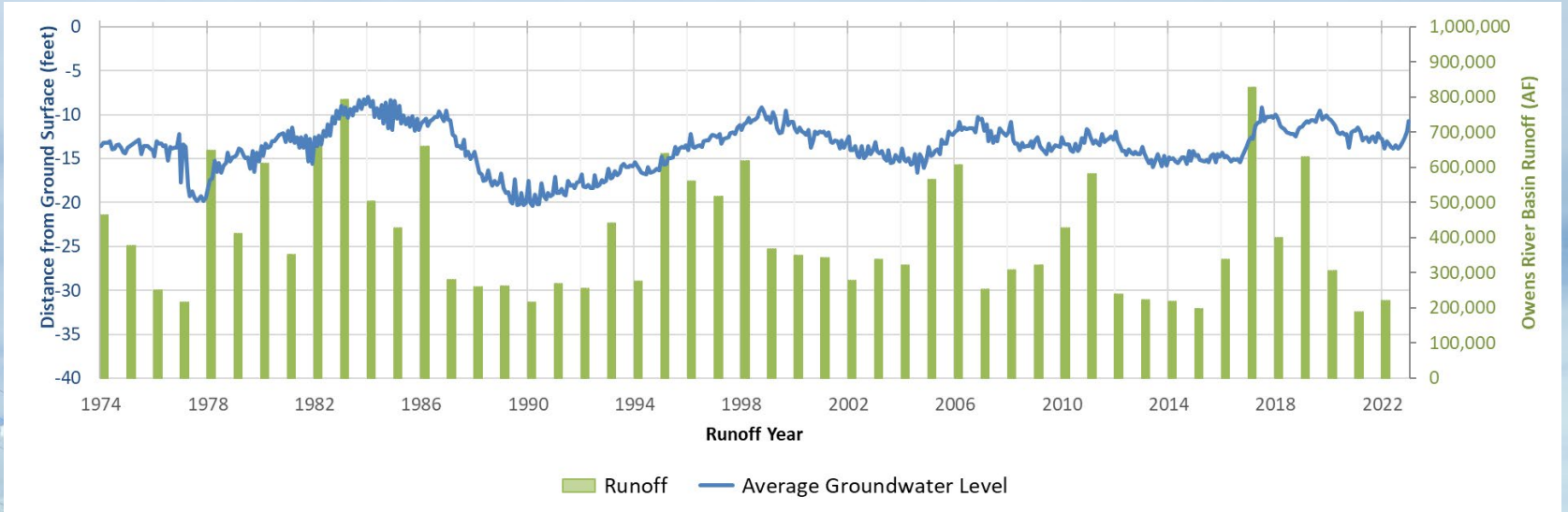
- Given the highest runoff forecast on record, LADWP will extensively spread throughout the Eastern Sierra and along the aqueduct for recharging the groundwater aquifers and for operational purposes.
- Spreading could reach as high as 450,000 AF.
- In-Valley uses will be supplied by surface water, wherever possible.
- Groundwater will be pumped only where uses can not be supplied by surface water.

Owens Valley Conditions

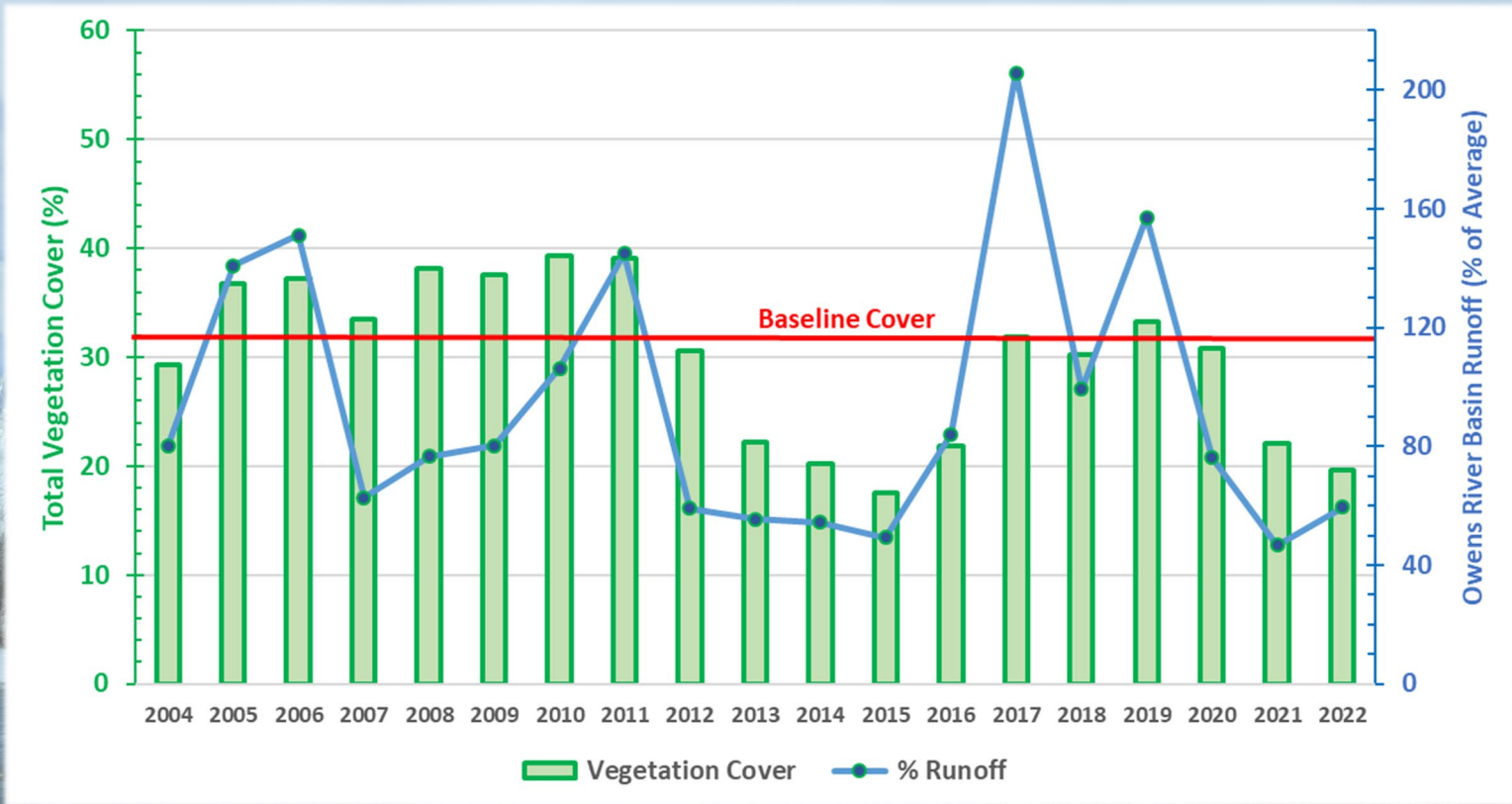


Average Owens Valley Groundwater Levels

(using representative monitoring wells)



Average Owens Valley Vegetation Condition



Based on 70 wellfield vegetation parcels monitored throughout Owens Valley

Environmental Mitigation Projects

- 64 environmental mitigation projects are required by the Inyo/LA Water Agreement, 1991 EIR, 1997 MOU, and other related documents.
- Current status:
 - Completed - **9**
 - Implemented, achieving goals, and ongoing (i.e. have ongoing water, financial, or other monitoring requirements) - **48**
 - Fully implemented but are not yet meeting goals - **7**
 - Not fully implemented - **0**