

# Owens River Water Trail















Mount Whitney

Alabama Hills National Scenic Area

Interagency Visitor Center

Highway 395

Lone Pine

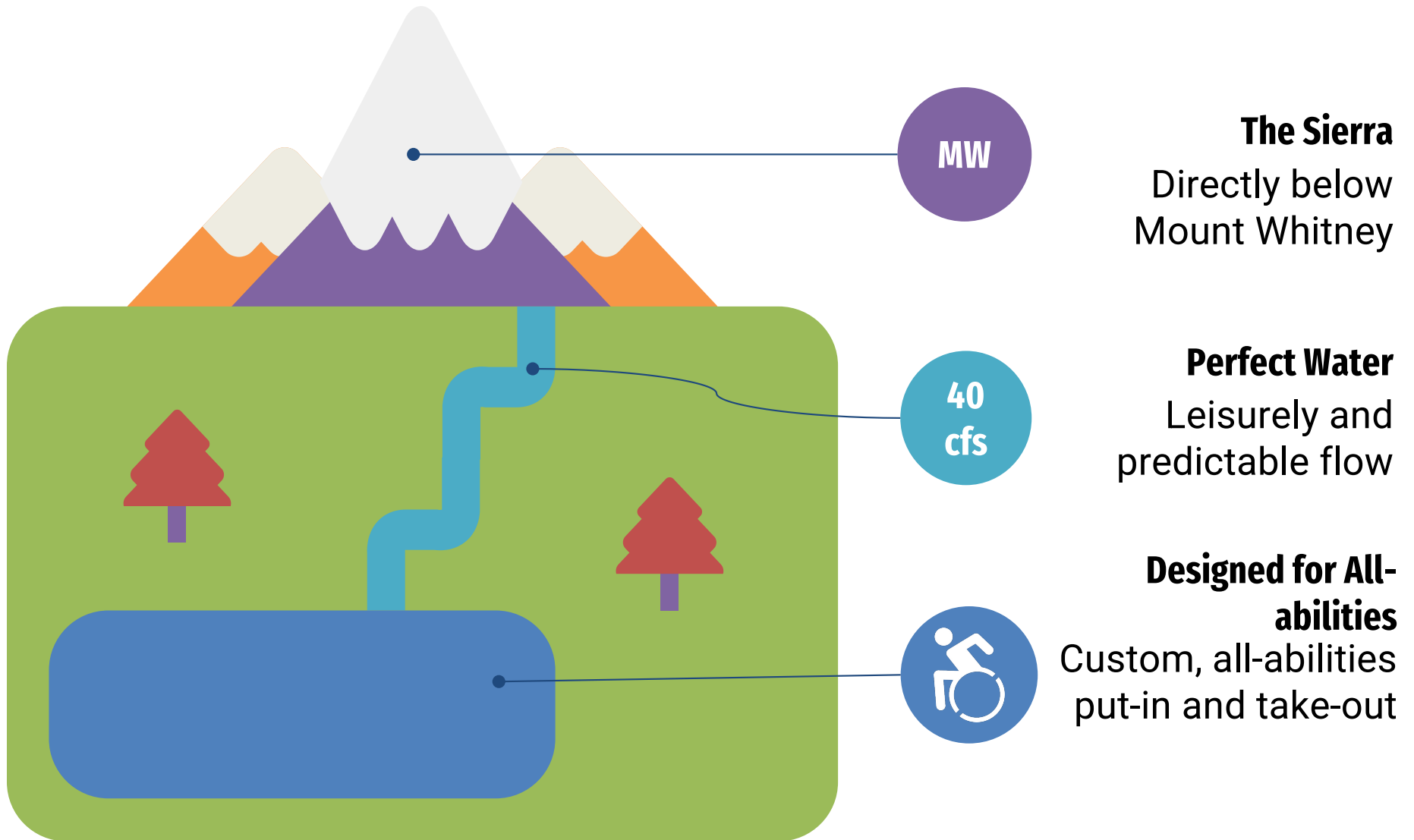
Death Valley Road

Owens River Water Trail

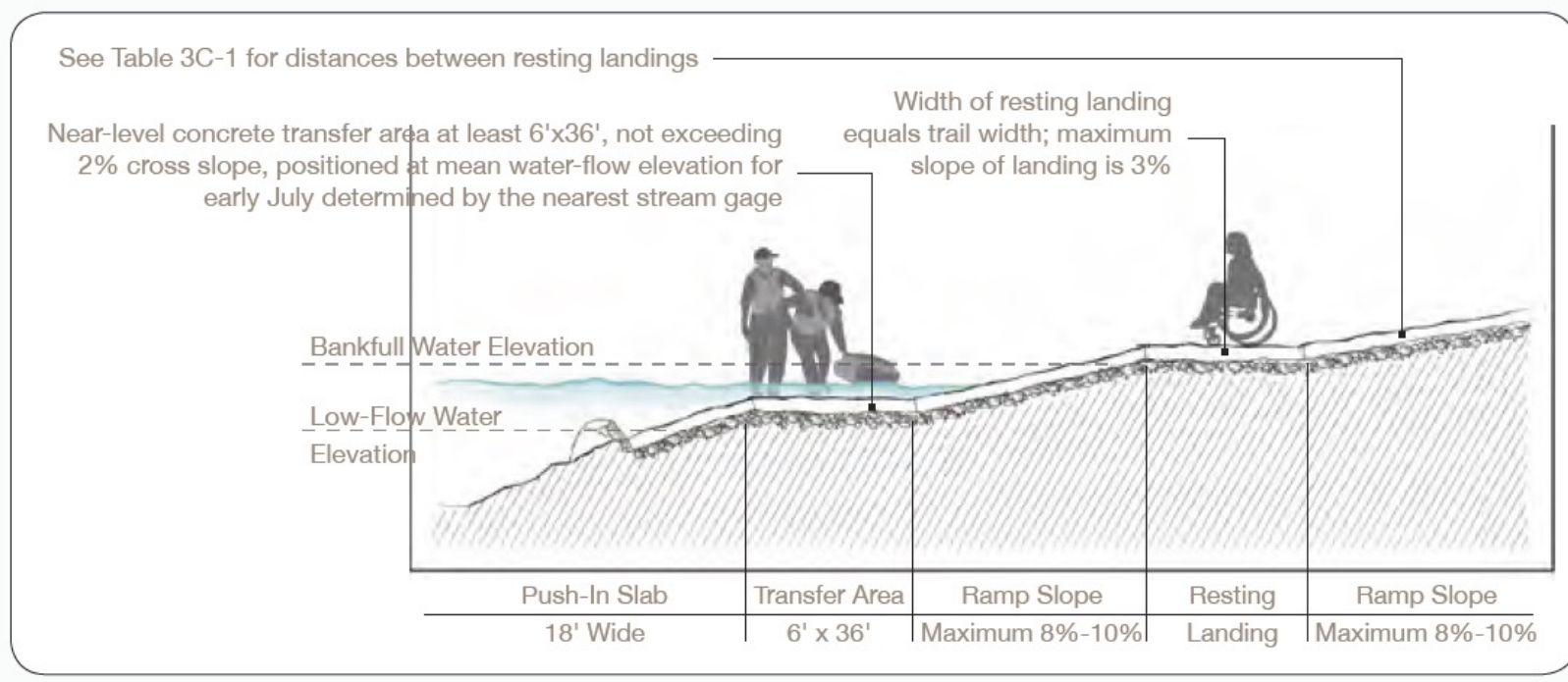
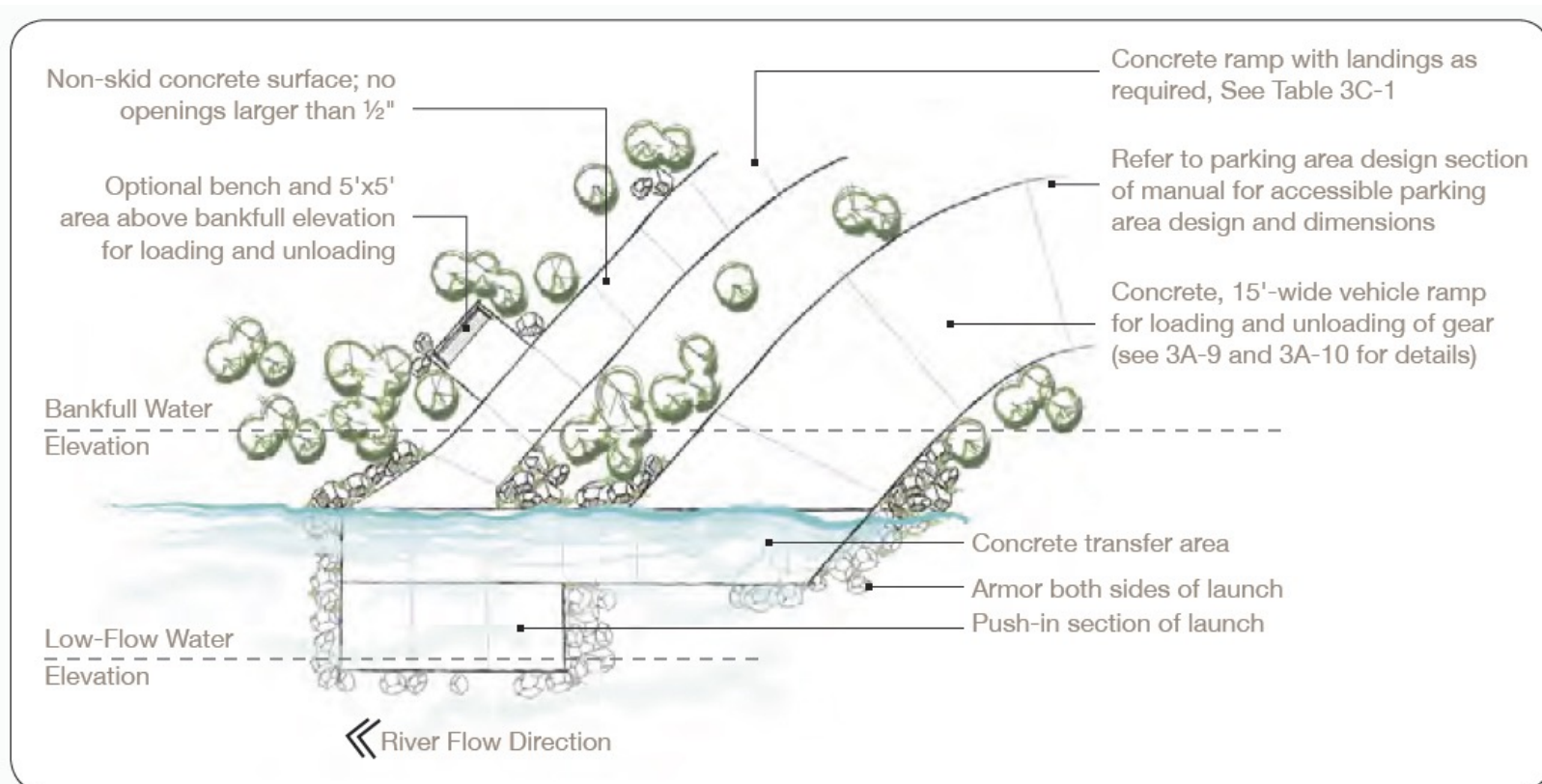
1712 ft



# Owens River Water Trail









Vegetation and rock ARMORING is used on upstream and downstream edges. Armor is placed only between bankfull water elevation and low or baseflow elevation

A armor on the upstream side of a launch is more extensive than on the downstream side

BANKFULL ELEVATION can be either the lowest flat areas along the stream channel, or on incised streams, at the line where permanent vegetation begins to grow.

Align launch 30 degrees to 45 degrees from the down stream edge

Keep LAUNCH SLOPE as close to 8% as possible

The hard-surfaced section of launch extends only from bankfull elevation to low or baseflow elevation

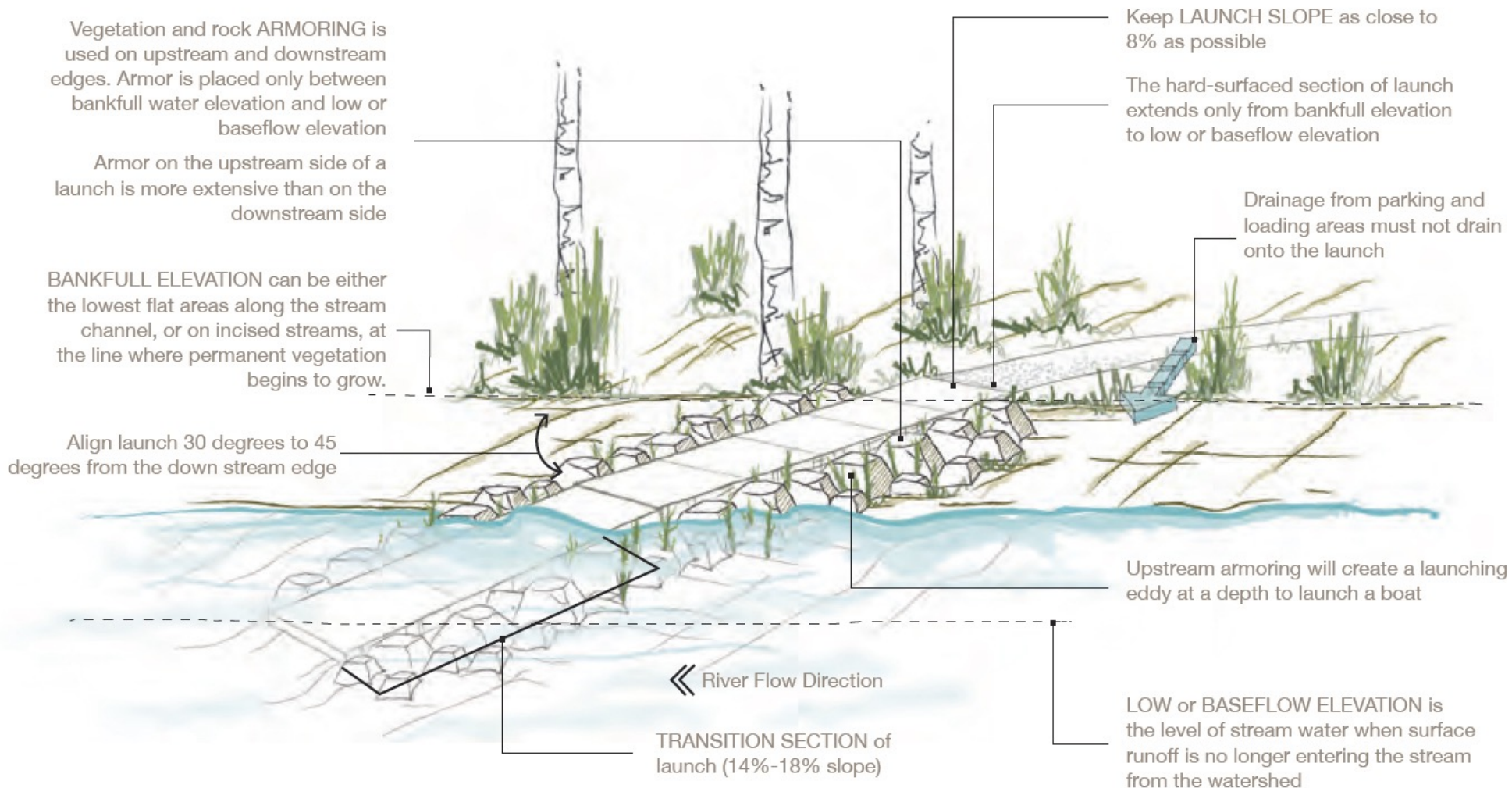
Drainage from parking and loading areas must not drain onto the launch

Upstream armoring will create a launching eddy at a depth to launch a boat

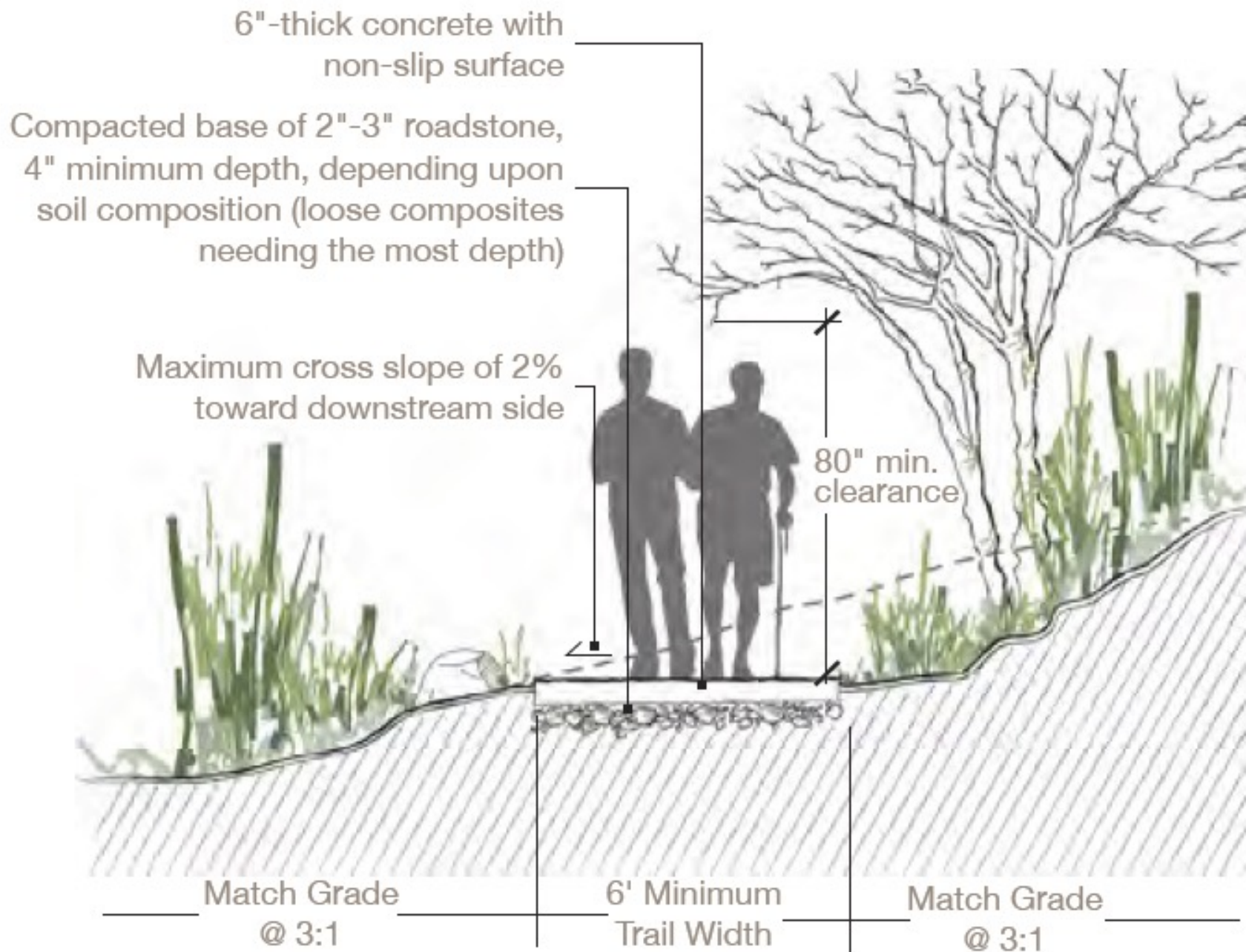
LOW or BASEFLOW ELEVATION is the level of stream water when surface runoff is no longer entering the stream from the watershed

« River Flow Direction

TRANSITION SECTION of launch (14%-18% slope)

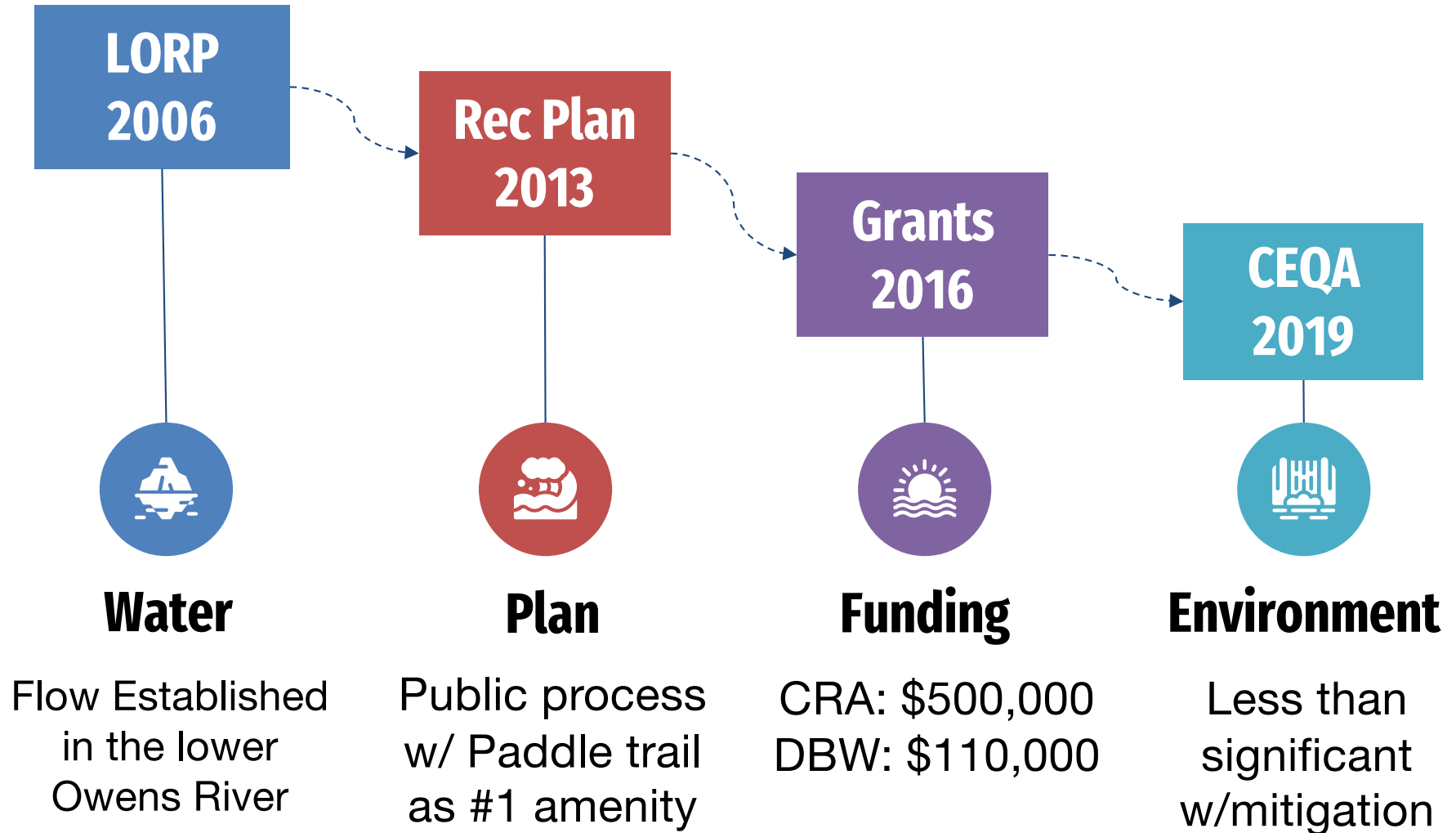




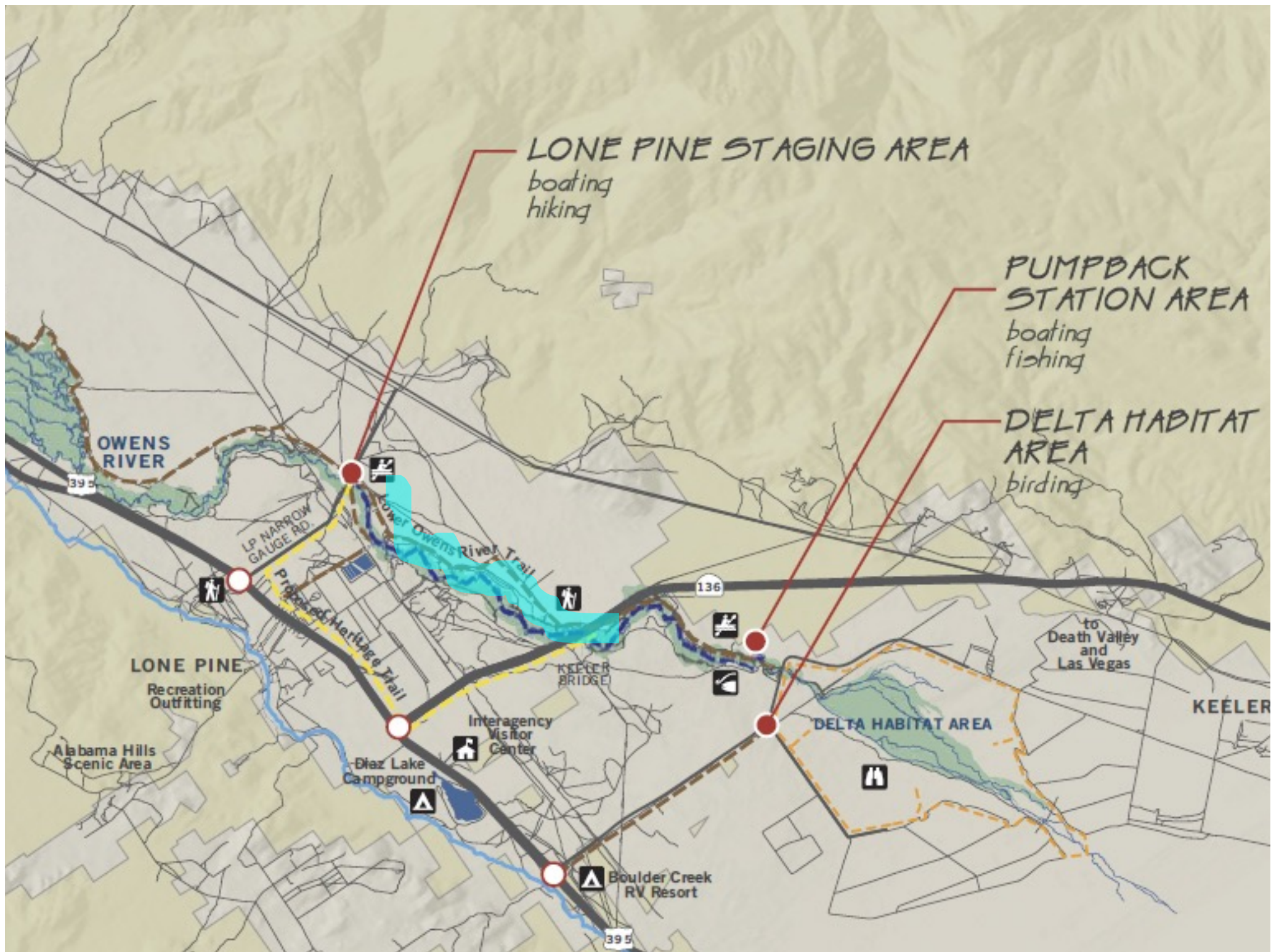




# Water Trail Development

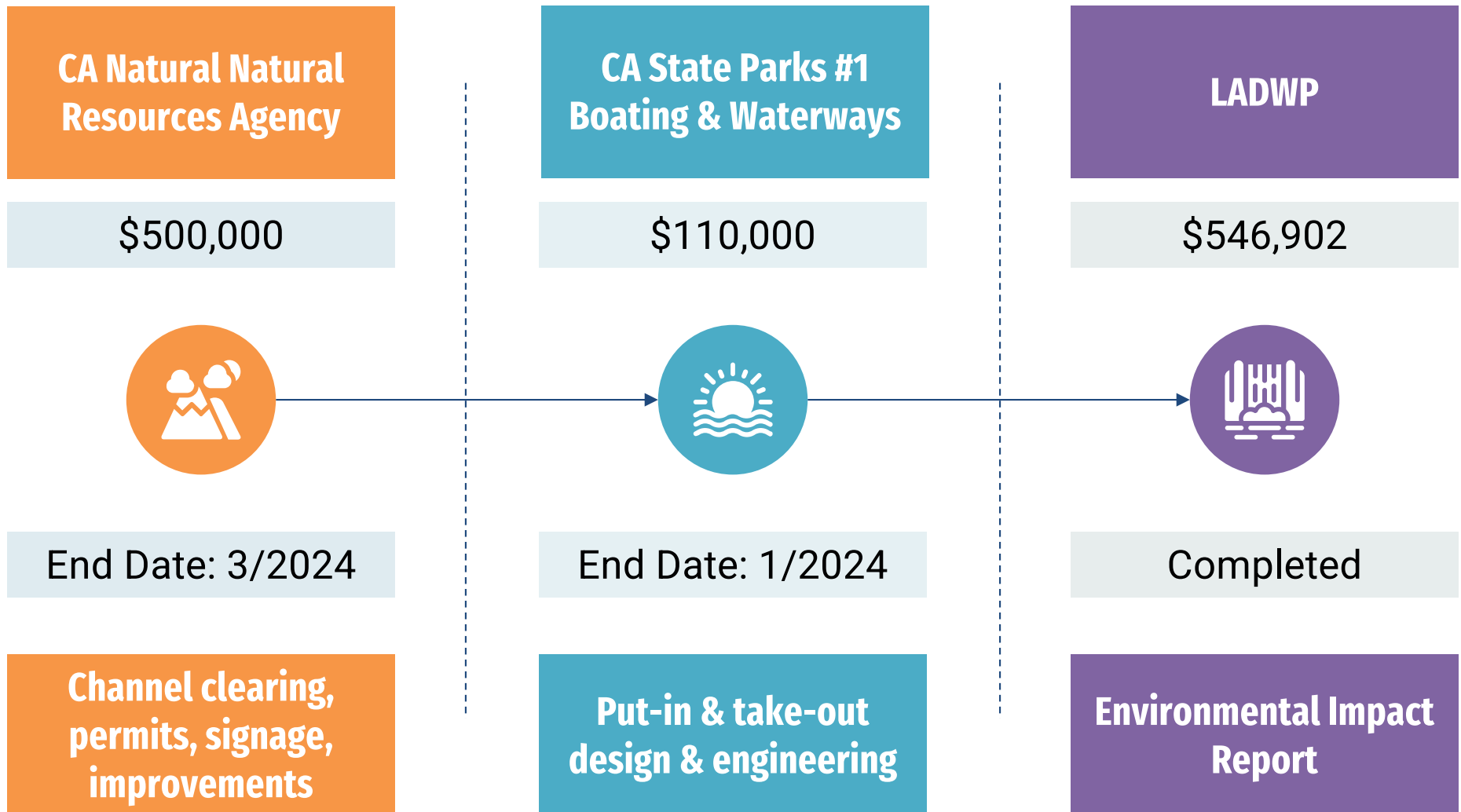








# Grants Available & Funding





# Environmental Impact Report

## Water Quality

Channel clearing impacts

WQ

## Floodplain Impacts

Construction and O&M impacts on hydrology and biological resources

F

## Archeology & Cultural Resources

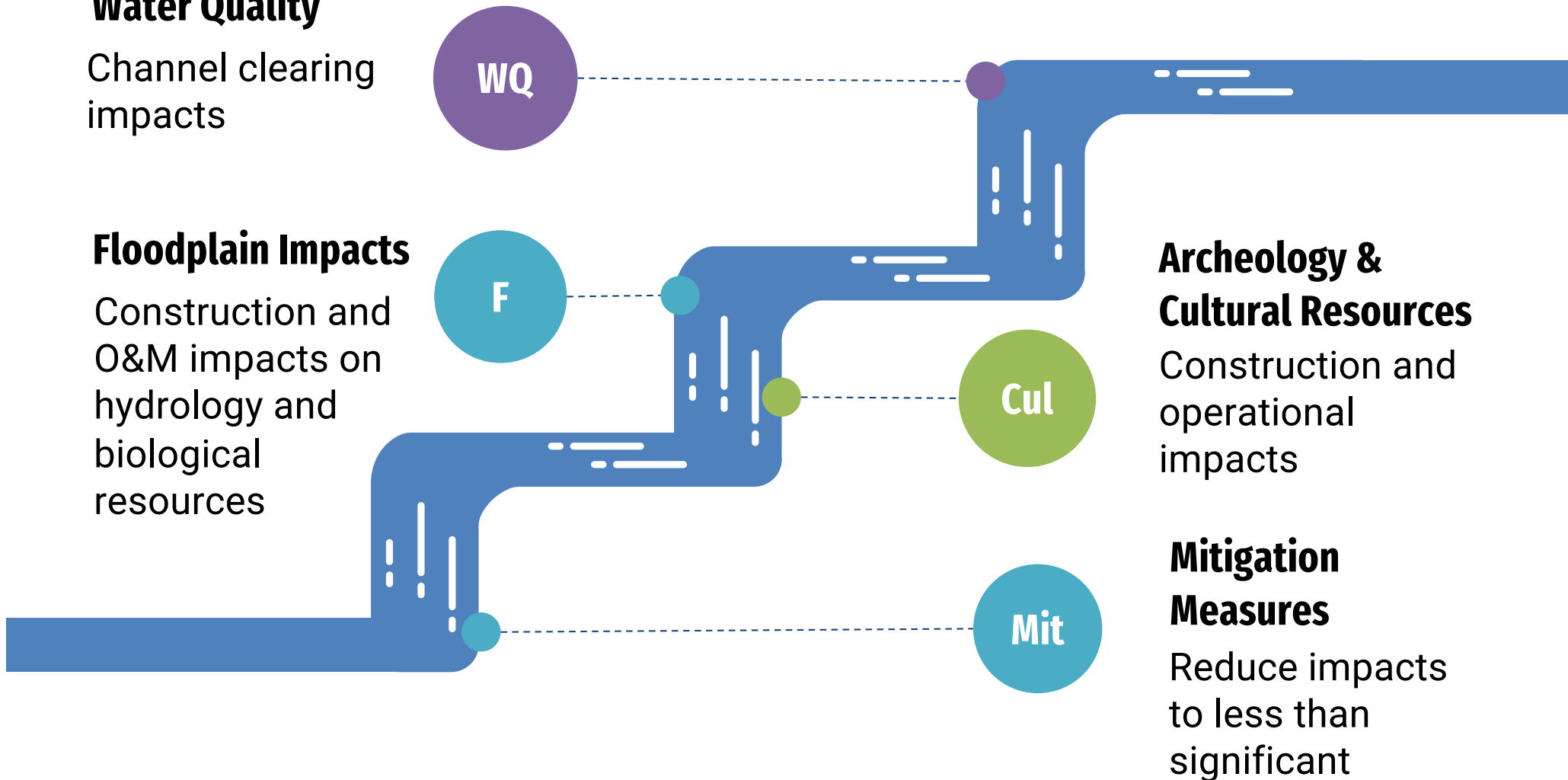
Construction and operational impacts

Cul

## Mitigation Measures

Reduce impacts to less than significant

Mit





# DWP Concerns—Post CEQA

- The County's long-term commitment to O&M.
- Wetland loss requiring remedial action will be left to DWP to mitigate.
- Placement of tule spoils on the floodplain.
- ✓ Resolved by mitigation and by the issuance of a bond to provide funds for remedial action in case of default.



# Next Steps

## **LADWP Agreement**

Grants cannot be used until a land access agreement is reached

01

## **Design, Engineering & Channel Clearing**

Contractors hired. Work season is September-March

03

## **CEQA Certified & Permits Acquired**

CEQA process concludes and permitting begins

02

## **Put-in & Take-out Construction**

Facilities and all-abilities water entry and exit

04

