

October 13, 2022 Standing Committee meeting, Item #1.

Standing Committee Field Trip Road Mileage Log	
<i>Reset your odometer at the airport</i>	
Odometer	
0.0	Independence Airport
0.5	Market St, turn left
0.8	MITIGATION: Independence Eastside Regreening on left behind ball field.
	Three projects designed to enhance the aesthetics of abandoned agricultural or pasture lands in areas around the towns of Big Pine, Independence, and Lone Pine. Lone Pine has been implemented; Big Pine and Independence came into operation in 2014.
0.9	MITIGATION: Independence Tree Lot on left
	Two irrigated tree farms projects in Lone Pine and Independence provide a greenbelt and are harvested as sustainable source of firewood for those in need.
1.0	Head straight onto dirt road over cattleguard
1.3	MITIGATION: Independence Pasturelands to the NE
	Provides approximately 910 acres of abandoned croplands and sparsely vegetated land with irrigation to create native pasturelands and provide water to native vegetation. Flood irrigation converted sparsely vegetated land east of Independence into productive native pasture. The project mitigated a source of blowing dust and stabilized soil previously affected by severe wind erosion.
1.5	MITIGATION: Independence Springfield on left
	Same impact and goals as the Independence Pasturelands
2.2	1st STOP: MITIGATION: Independence Springfield overview
2.2	Turn right, west, on Mazourka Canyon Road to Highway 395
3.4	Turn right, north, on Highway 395
12.3	Turn right, east, onto Blackrock Springs Road heading NE
13.0	Turn right onto gravel road into the Blackrock Waterfowl Management Area
	MITIGATION: Blackrock Fish Hatchery, at Big Blackrock Spring is further down this road. Increased groundwater pumping has reduced or eliminated spring flows from Blackrock Springs. No onsite mitigation is specified. The hatchery provides compensatory mitigation by producing fish that are stocked throughout the region.
13.3	Cross the Los Angeles Aqueduct (diagonal to stay left of the pump)
13.4	Road parallels Blackrock ditch, (water supply for the BWMA wetlands)
14.2	Water diversion into the BWMA Winterton Unit
15.4	BWMA Drew Unit (dry) is on your left
17.1	TURN right , SE, onto dirt road
17.4	Cross Twin Lakes return ditch
17.8	2nd Stop: BWMA Waggoner Unit overview
18.1	Loop crosses Twin Lakes return ditch again
18.2	Turn left, north towards Blackrock Ditch Road

Blackrock Road

Turn off Blackrock Ditch

BWMA Overview Stop

Standing Commitee Tour October 13, 2022

Mitigation Projects with stops at the Independence Springfield and Blackrock Waterfowl Management Area

Legend

-  Airport to Independence Springfield (via Market St.)
-  Courthouse
-  Independence Airport (Start Tour)
-  Independence Springfield to BWMA
-  Stops 1st--Independence Springfield; 2nd--Blackrock Waterfowl Management Area

Independence Airport (Start Tour)

Lunch behind Courthouse

Mazourka Canyon Rd.

Independence Springfield Stop

Google Earth

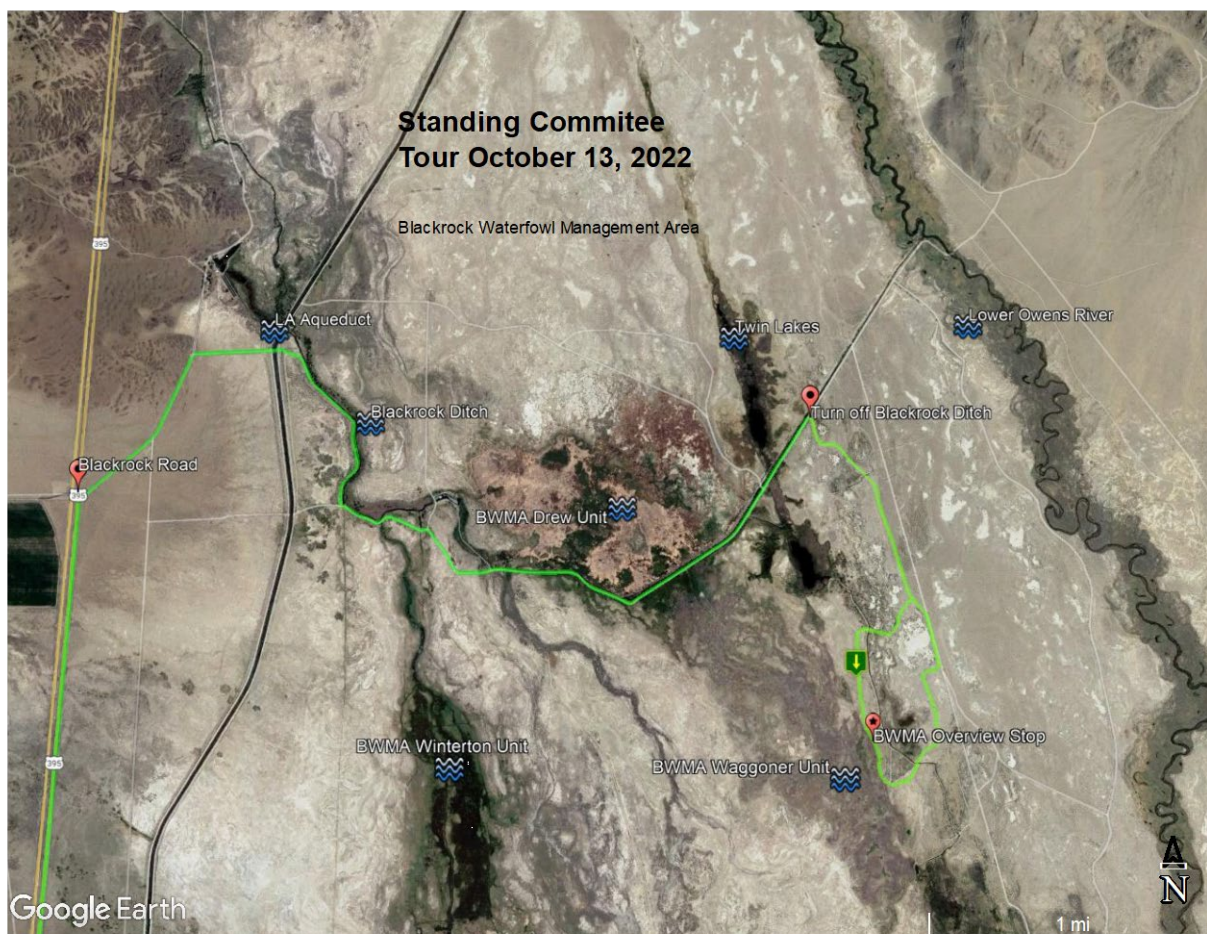
4 mi



Standing Committee Tour October 13, 2022

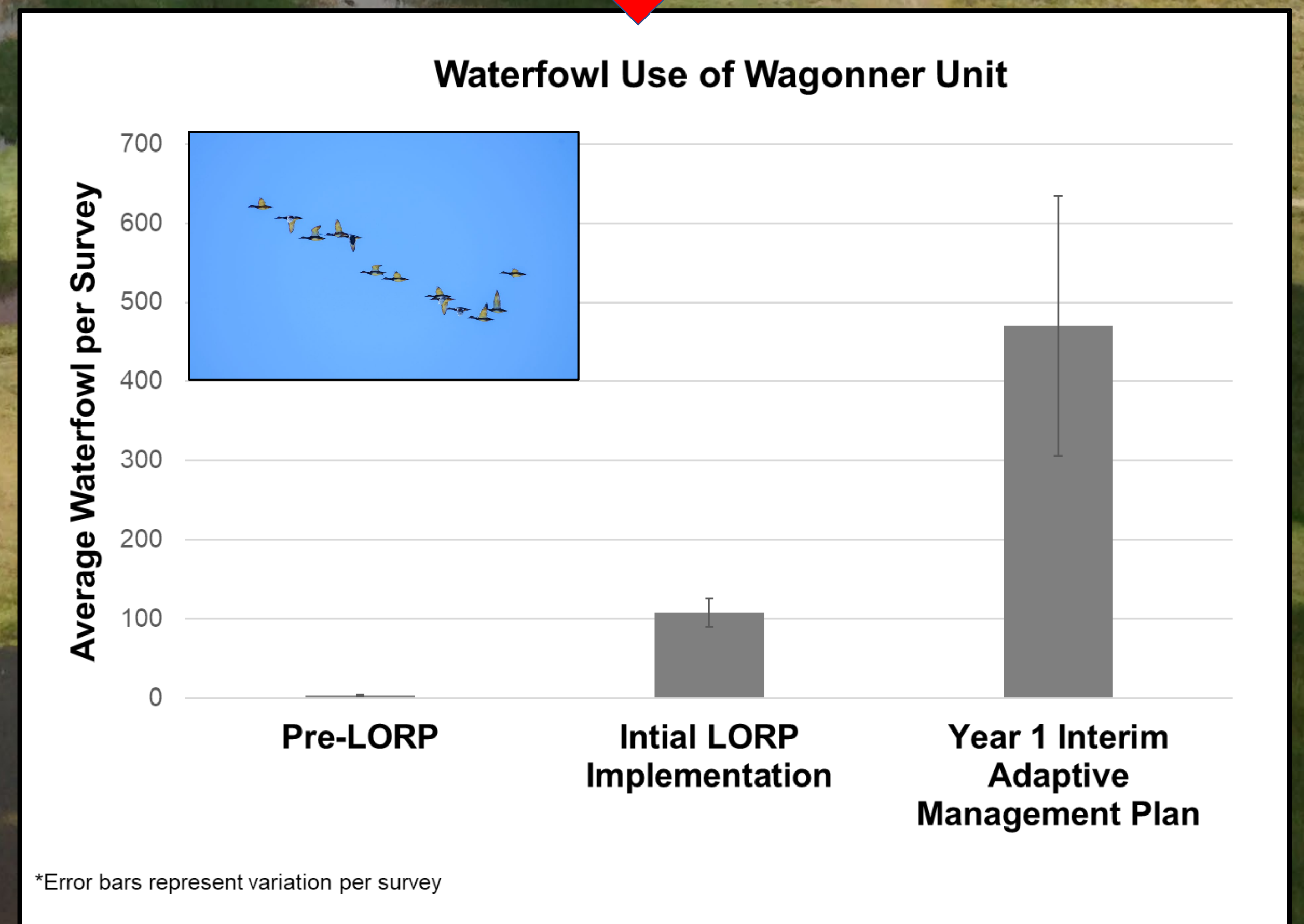
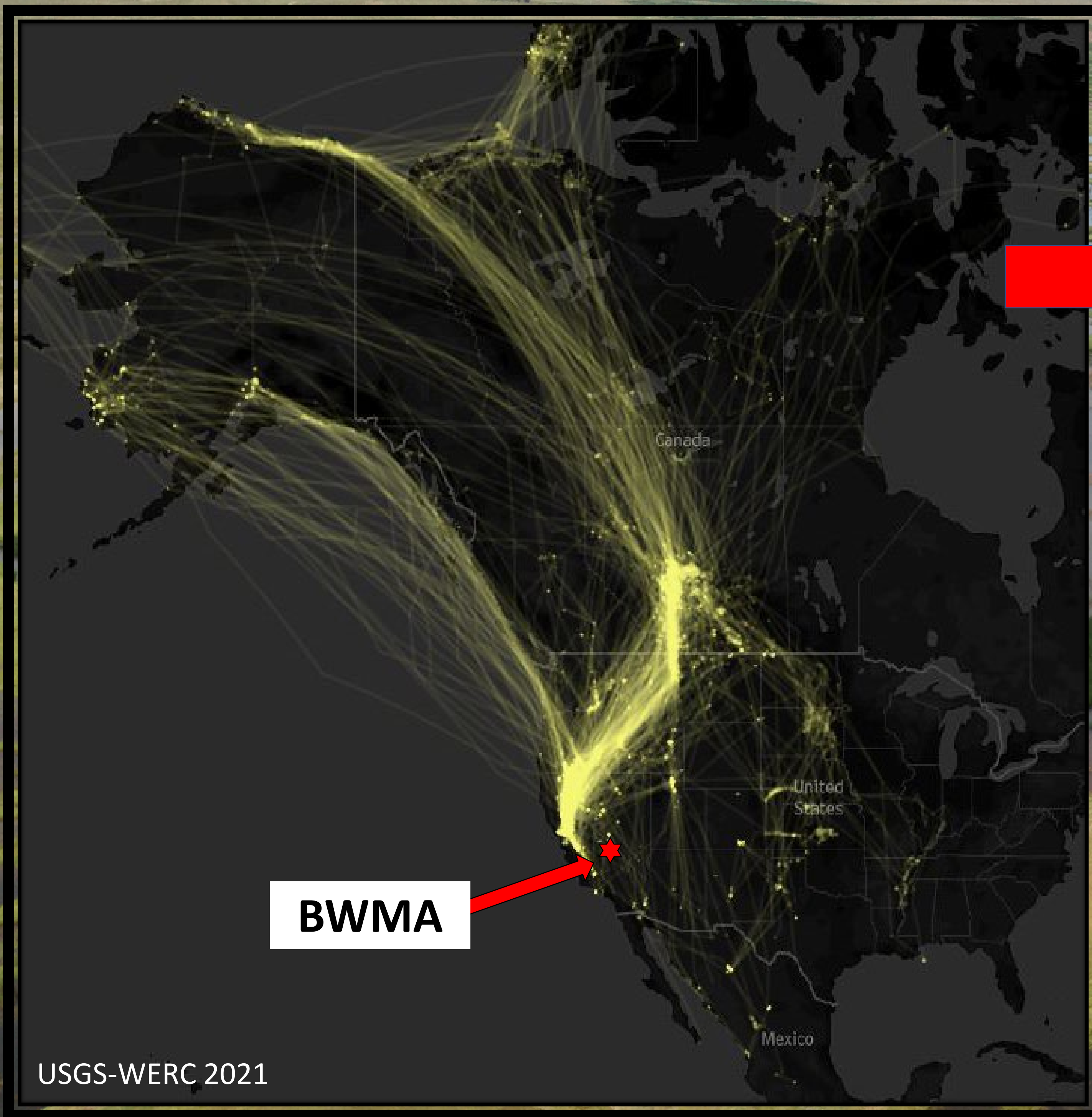
Independence Town and Independence Springfield



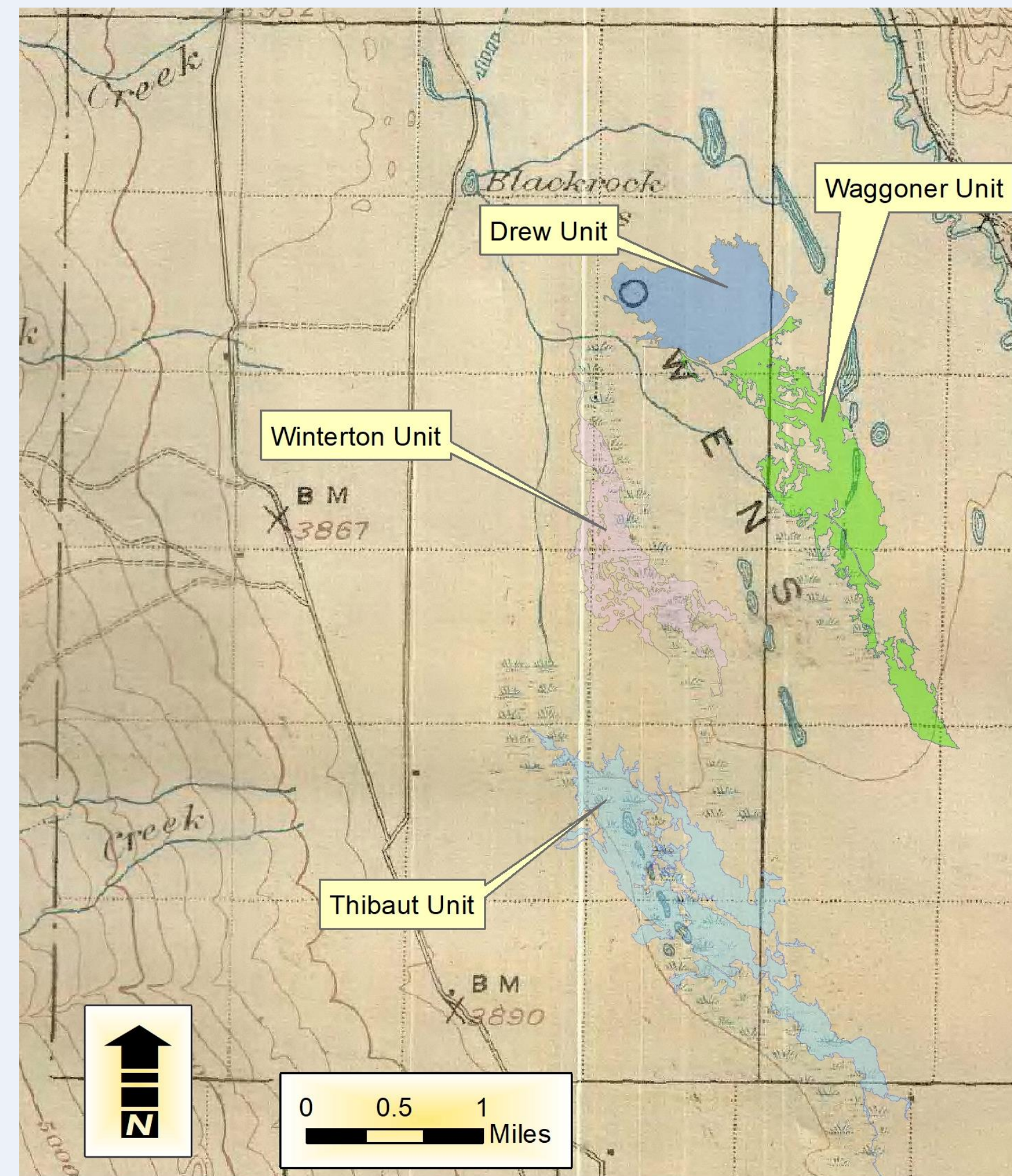


BWMA Provides Habitat for Our Migrating Waterbirds

Pacific Flyway Waterfowl Migration Routes



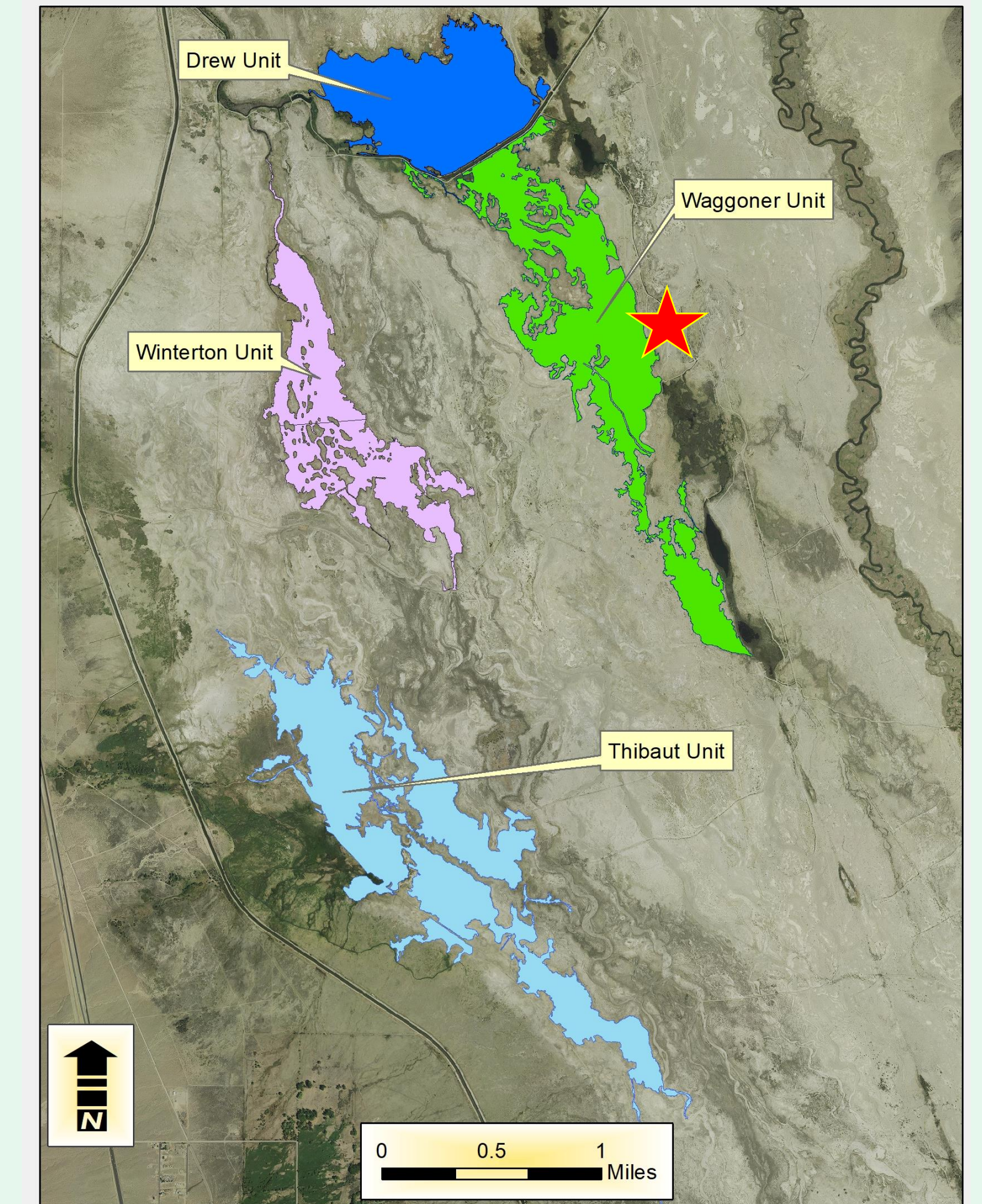
Naturally occurring seasonal wetlands mapped in 1907 (now referred to as the Blackrock Waterfowl Management Area-BWMA)



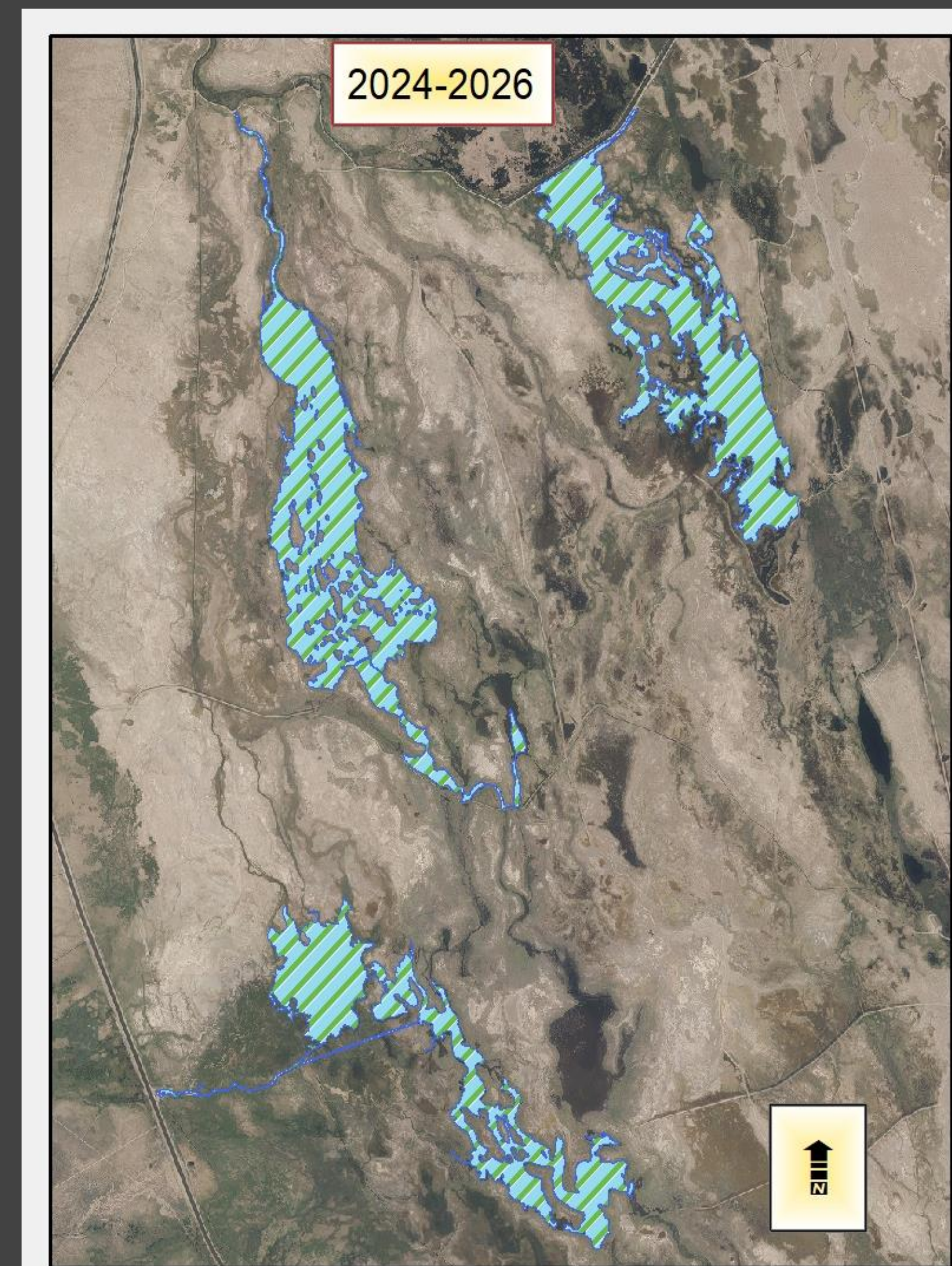
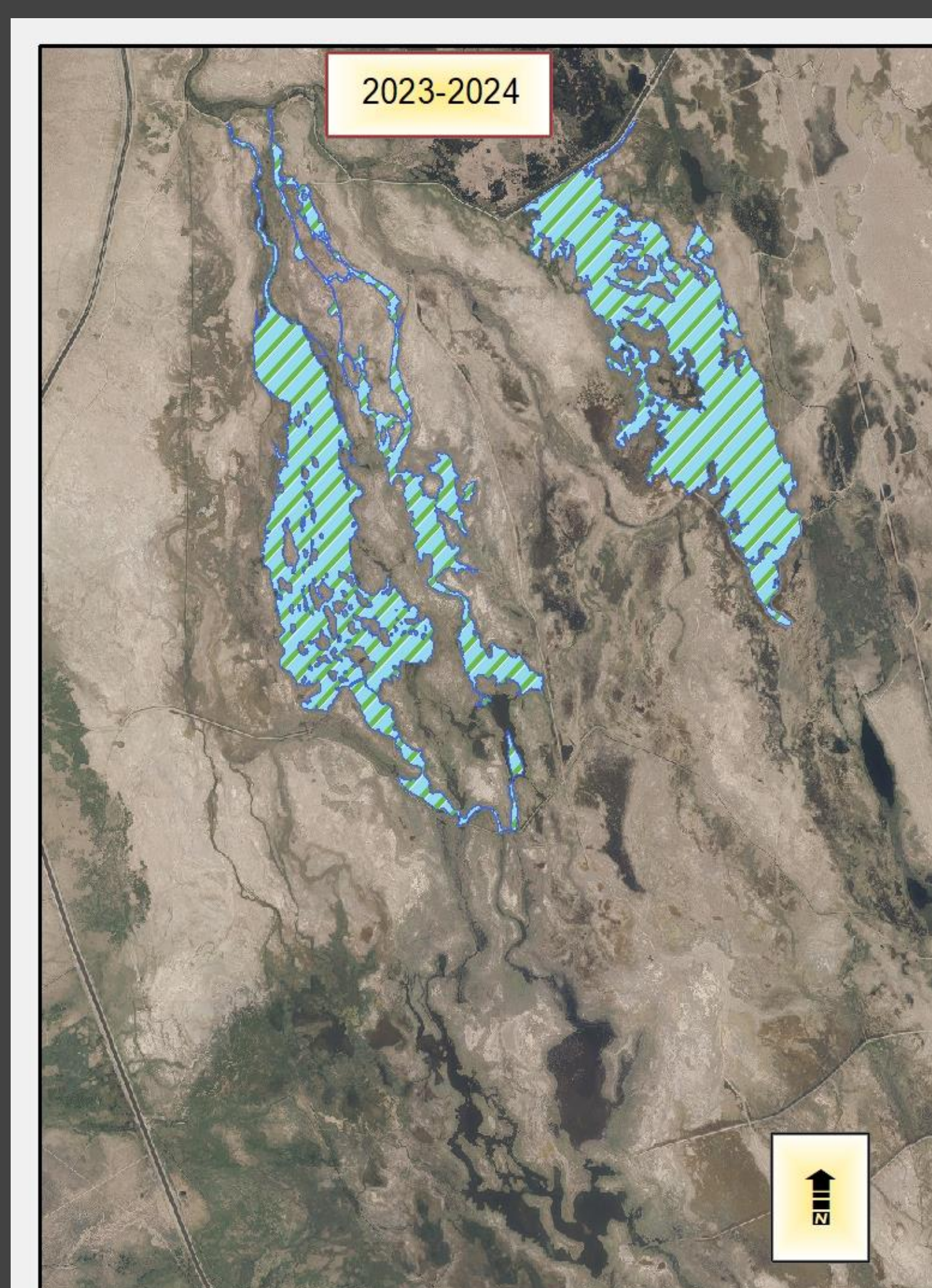
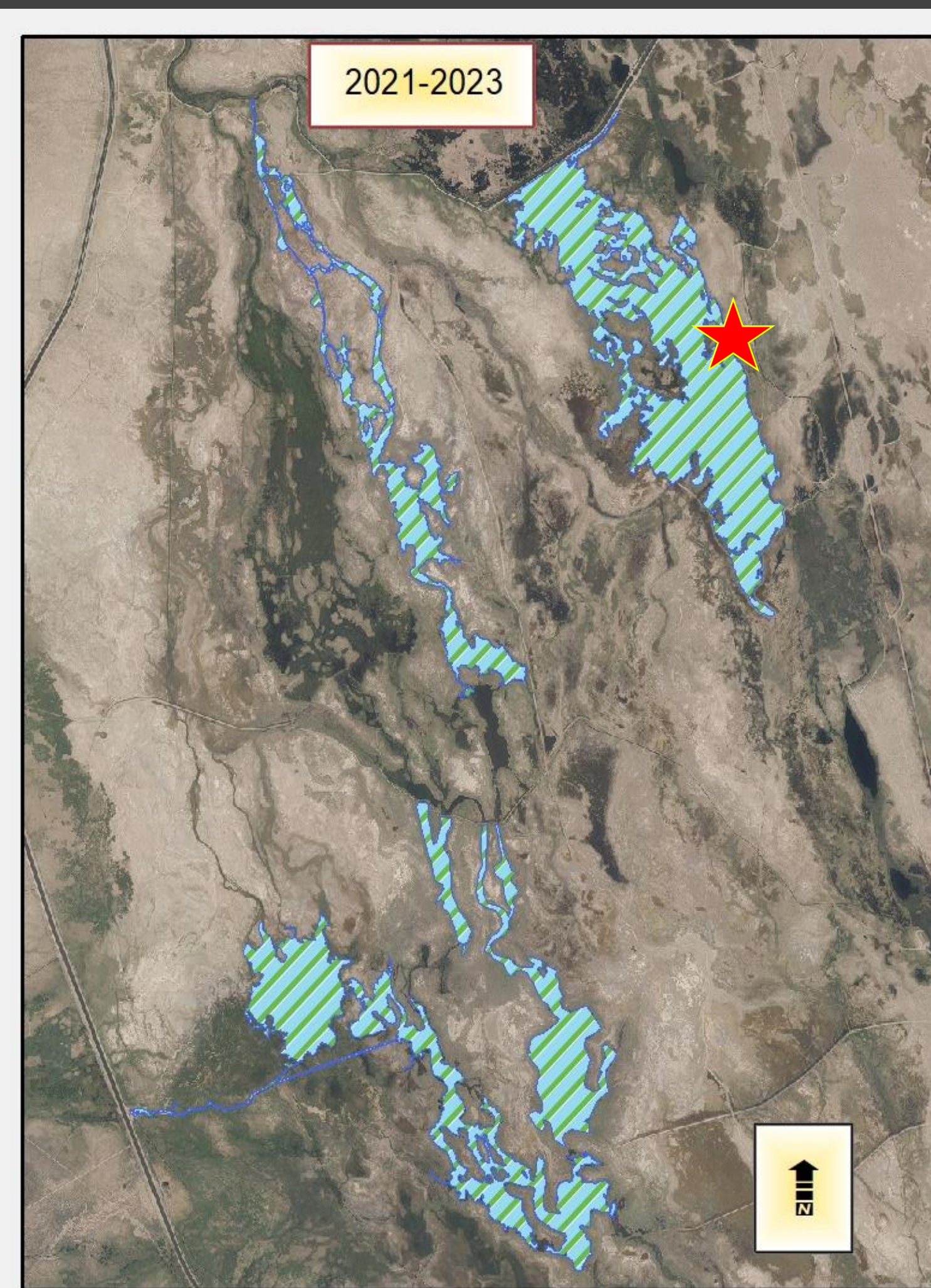
Four BWMA Units identified in the LORP EIR:

- 1) Drew
- 2) Winterton
- 3) Waggoner
- 4) Thibaut

★ = Field trip location (You are here)



Five year interim flooding schedule 2021-2026



The original BWMA plan(LORP EIR, 2004) called for year round flooding of an 'active' unit. Results after the first summer of continuous flooding under this plan were rapid declines in open water, plant diversity and avian diversity/abundance.

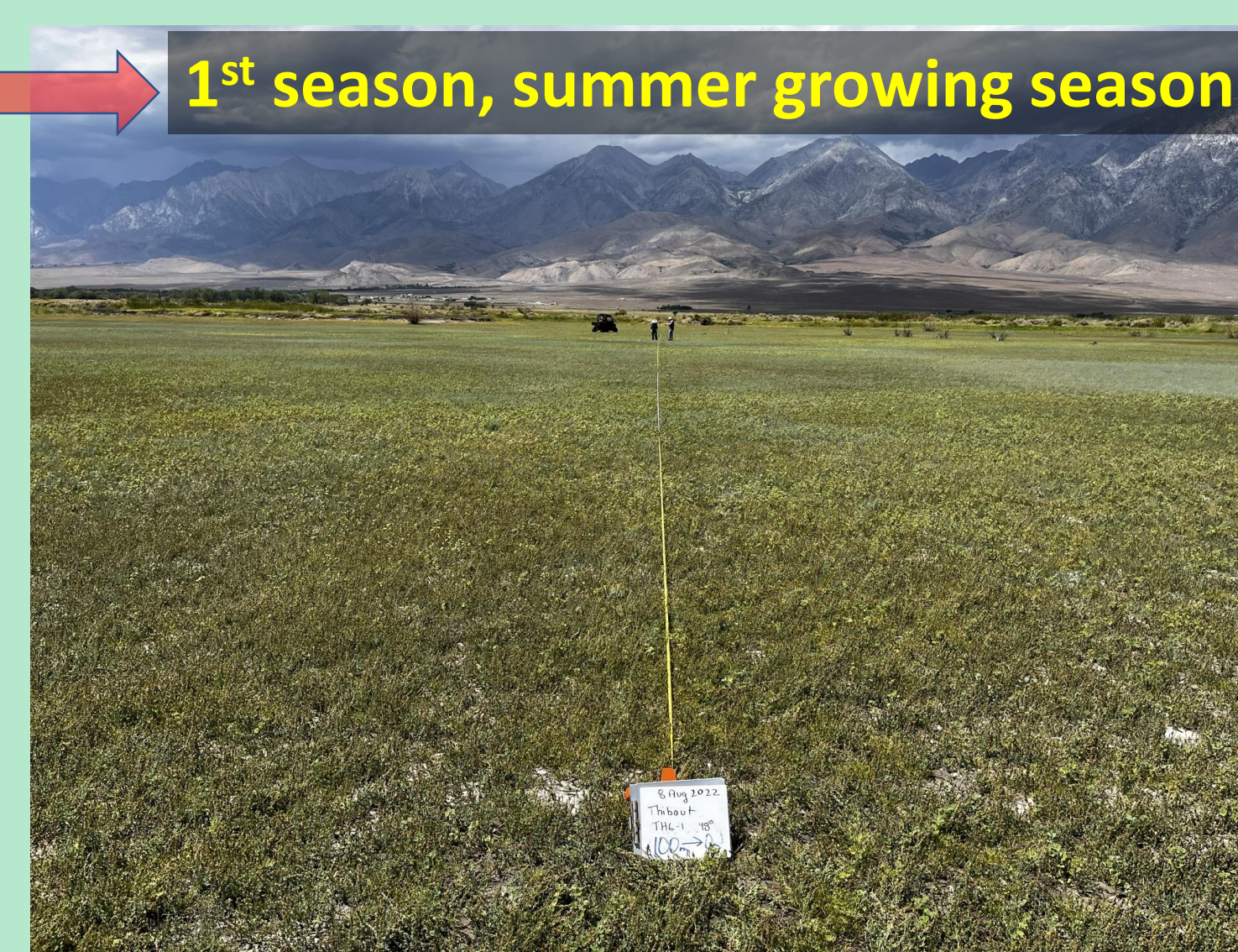
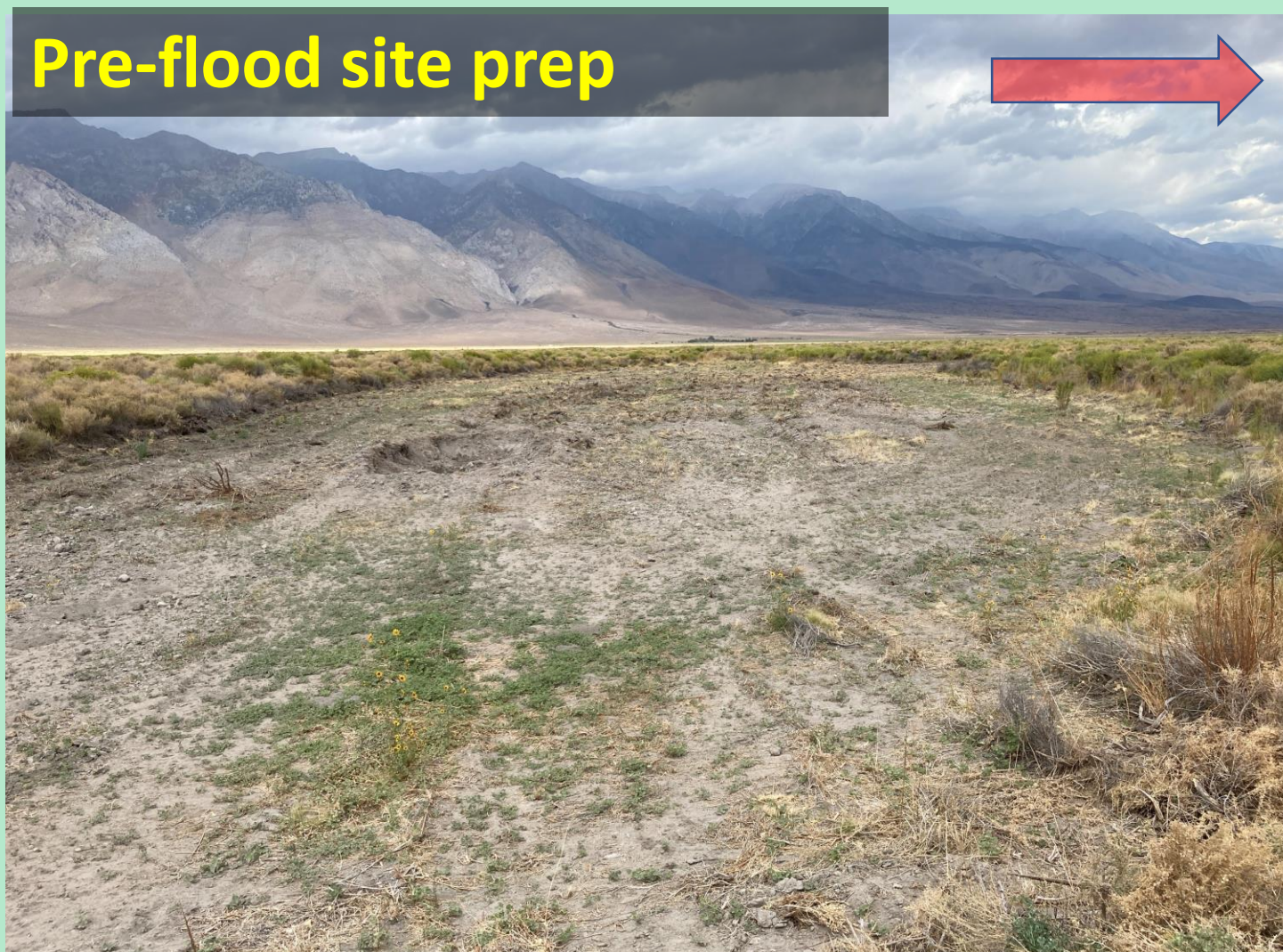


*Drew Unit, northeast looking southwest,
May 2010*



*Drew Unit, northeast looking southwest,
Winter 2011*

5 year interim plan adopts moist soil wetland management principles to maintain open water and develop a forage base for migratory waterfowl and shorebirds



Repeat flood and draw down cycle until a 'hard reset' is required (pre-flood site prep)