

# **Owens Valley Annual Operations Plan 2022-23 Runoff Year**

**Los Angeles Department of Water and Power  
Water Operation Division**

# Water Agreement Process

- According to Inyo/LA **Water Agreement** procedure, LADWP submits a draft Operations Plan to the ICWD by April 20<sup>th</sup> of each year.
- Inyo County provides comments on the Plan within 10 days.
- LADWP finalizes the Plan within 10 days of discussing the comments with ICWD staff at a Technical Group meeting.

# Consecutive Dry Years – six month pumping plan

## Water Agreement - Section V.D.

- “In the event of two consecutive dry years when forecasted Owens River Basin Runoff for the April to September period is less than 75% of normal, LADWP shall prepare a proposed plan for the first 6-month period beginning on April 1<sup>st</sup> and will prepare a second plan beginning on October 1<sup>st</sup>.”

# Snowpack & Runoff Forecast

Snowpack Conditions: 41% of normal

Runoff Forecast: 47% of normal

**Forecast is calling for the second driest year on record (since 1935).  
Last year was the driest year on record.**

# ON/OFF Status of Vegetation Monitoring Sites (April 2022)

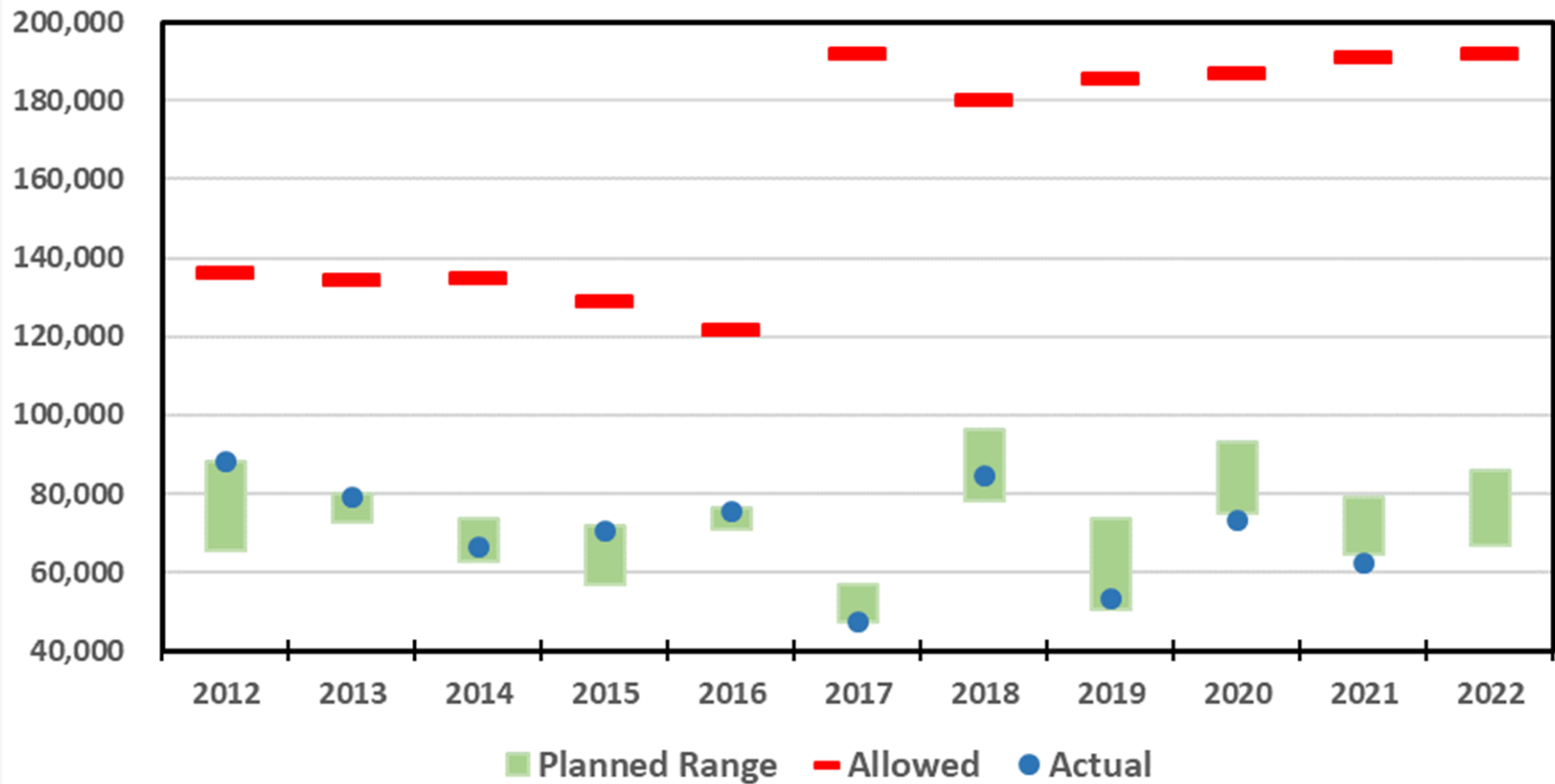
Vegetation Monitoring Site	April 2021 ON/OFF Status	Vegetation Monitoring Site	April 2021 ON/OFF Status
LW1	ON	TS1	OFF
LW2	ON	TS2	ON
LW3	ON	TS3	ON
BP1	ON	TS4	ON
BP2	OFF	IO1	OFF
BP3	ON	IO2	OFF
BP4	ON	SS1	OFF
TA3	OFF	SS2	OFF
TA4	ON	SS3	ON
TA5	ON	SS4	OFF
TA6	ON	BG2	ON

**LADWP can pump wells associated with monitoring sites in ON status**

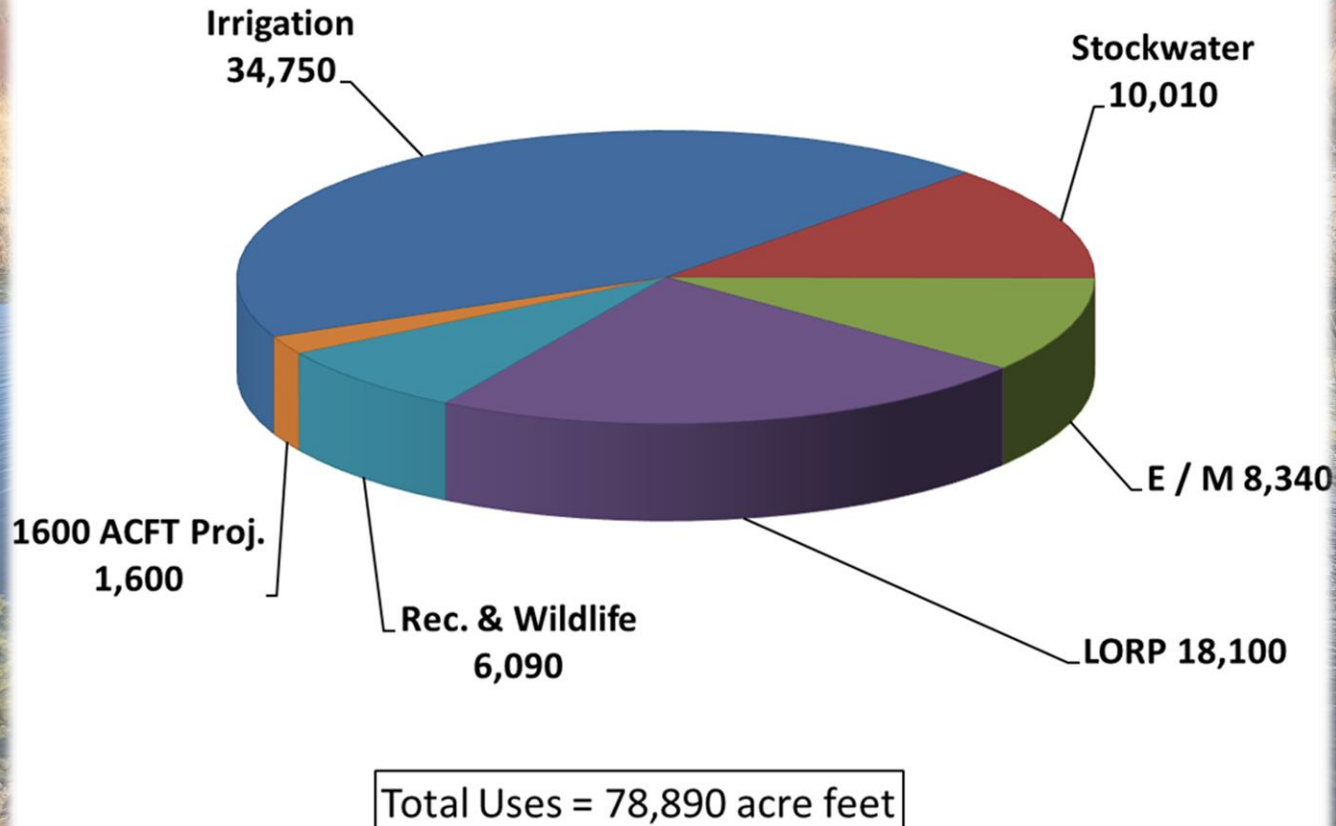
# Planned 2022-23 Pumping April-September 6-Month Period

Wellfield	Available Pumping Capacity (af)	Planned Pumping (af)
Laws	44,380	7,000-8,200
Bishop	18,310	9,720
Big Pine	50,510	10,200-11,700
Taboose-Aberdeen	39,920	3,000-7,050
Thibaut-Sawmill	16,120	5,040-5,280
Independence-Oak	12,300	5,860-6,600
Symmies-Shepherd	6,850	1,200
Bairs-George	2,830	450-890
Lone Pine	990	760
<b>Total Owens Valley</b>	<b>192,110</b>	<b>43,230-51,400</b>

# Planned Range, Allowed, and Actual Pumping



# Water Supplied to Uses in Owens Valley by LADWP



***Additional 60,000 AF will be supplied for Dust Mitigation at Owens Lake***

# Request for Irrigation Reductions

Section 1V.A of the Water Agreement provides:

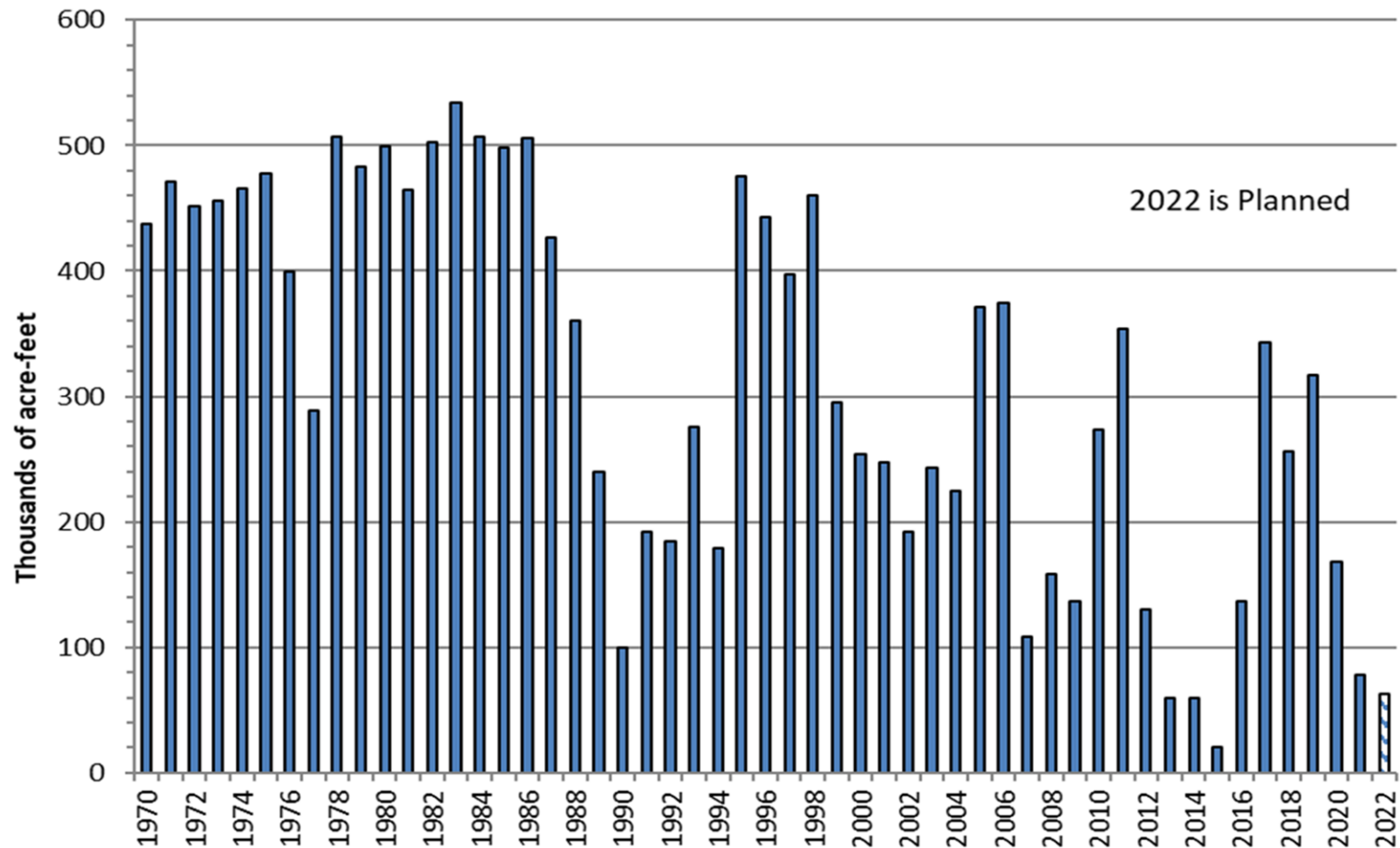
*“It is recognized that successive dry years could result in insufficient water to meet all needs. During periods of dry year water shortages, the Technical Group will evaluate existing conditions. A program providing for reasonable reductions in irrigation water supply for Los Angeles-owned lands in the Owens Valley and for E/M projects may be implemented if such a program is approved by the Inyo County Board of Supervisors and the Department, acting through the Standing Committee.”*

## Request for Irrigation Reductions

- The proposed irrigation reductions are for limiting the maximum irrigation allotment to 4 acre-feet per acre for allotments that are typically 5 acre-feet per acre.
- No reductions to Enhancement & Mitigation Projects are proposed.
- For allotments less than 4 acre-feet per acre, no reductions are proposed.
- Similar irrigation reduction programs were implement in first two years of the Water Agreement (1991-92, 1992-93).

# Water Export to Los Angeles

**Planned Export to Los Angeles is 62,700 acre-feet, which is 25% of Long-Term Average**



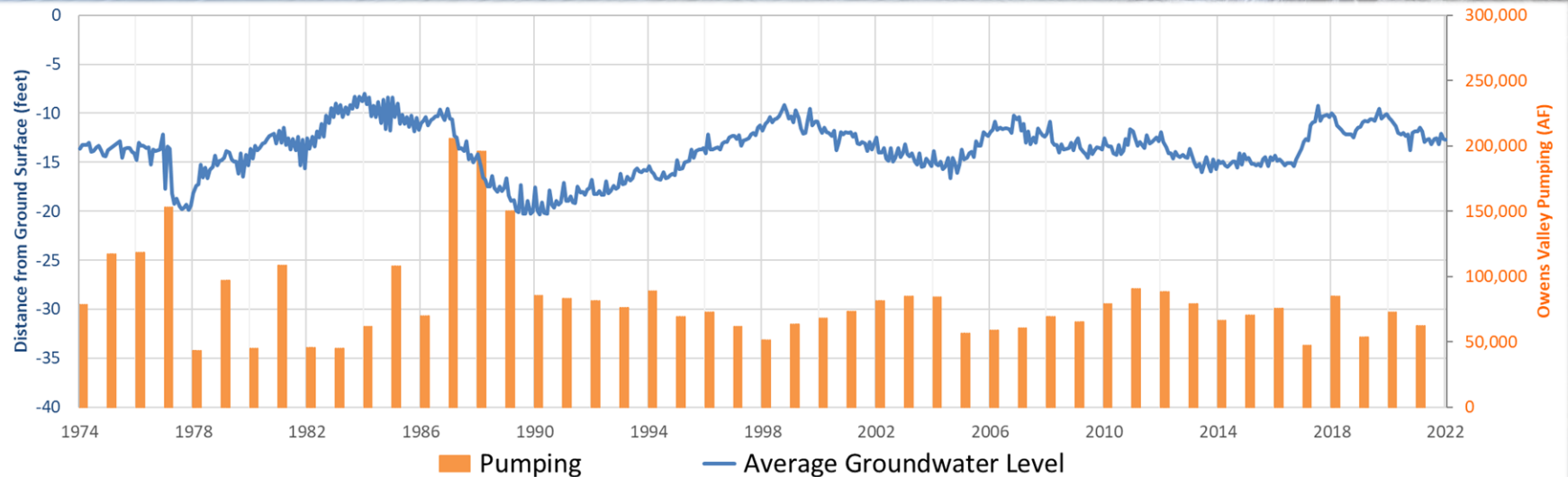
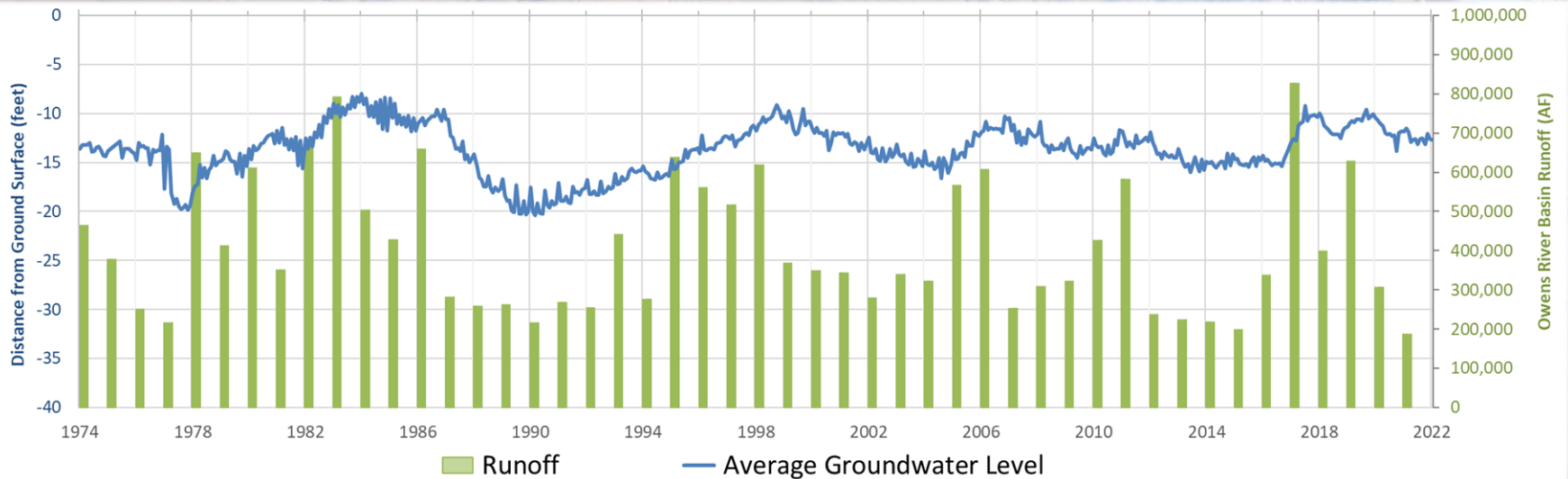
# Planned Water Export to Los Angeles

- Despite a 47% runoff year (following the driest year on record) LADWP will meet its obligations in Owens Valley.
- Water supply in Owens Valley (including runoff, flowing groundwater, and pumping) is not enough to supply uses and losses in Owens Valley.
- As a result, only 63,000 acre-feet of water will be exported from the Eastern Sierra this year.

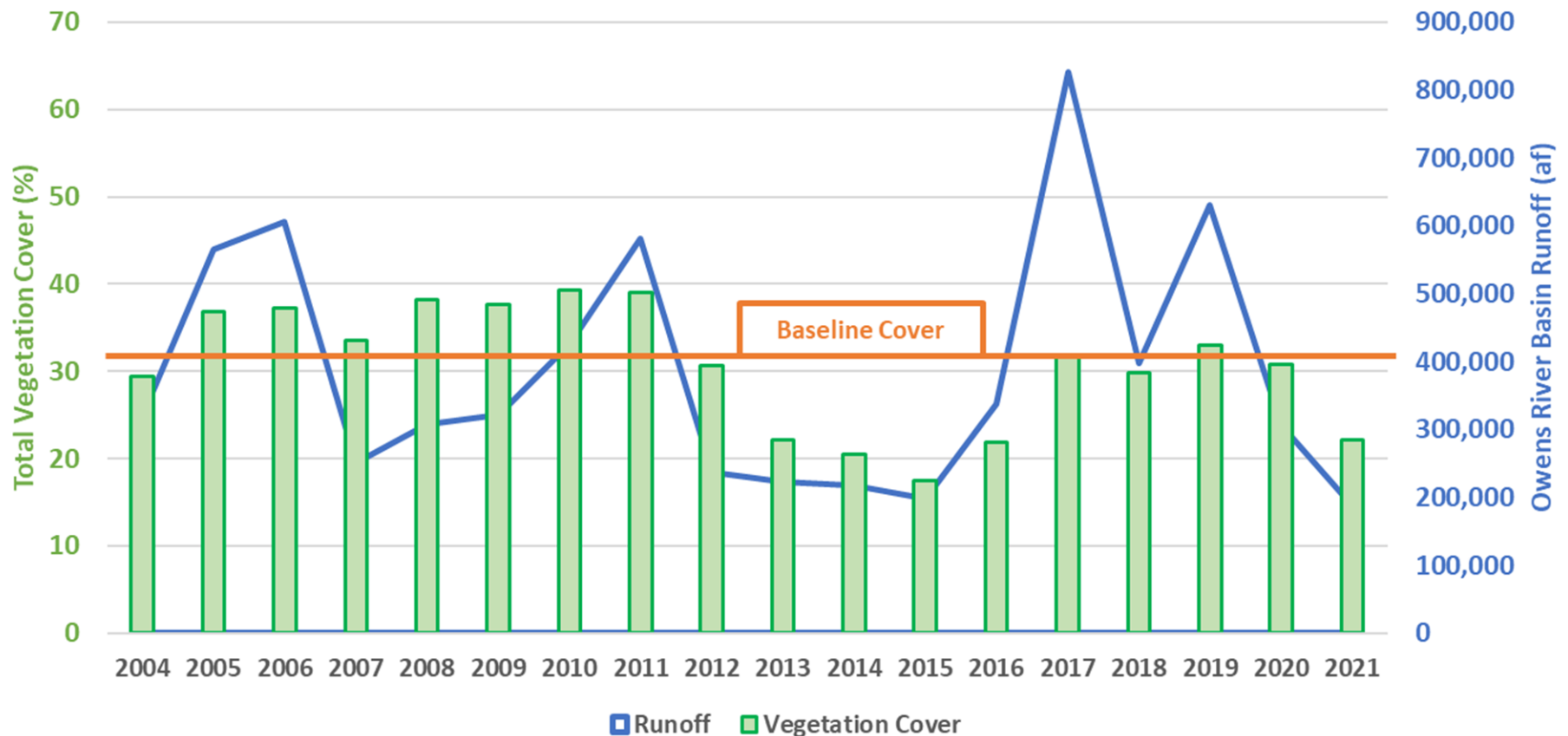
# Owens Valley Conditions

# Average Owens Valley Groundwater Levels

(using representative monitoring wells)



# Average Owens Valley Vegetation Condition



Based on 70 wellfield vegetation parcels monitored throughout Owens Valley

# Environmental Mitigation Projects

- 64 environmental mitigation projects are required by the Inyo/LA Water Agreement, 1991 EIR, 1997 MOU, and other related documents.
- Current status:
  - Completed - **8**
  - Implemented, achieving goals, and ongoing (i.e. have ongoing water, financial, or other monitoring requirements) - **43**
  - Fully implemented but are not yet meeting goals - **13**
  - Not fully implemented - **0**