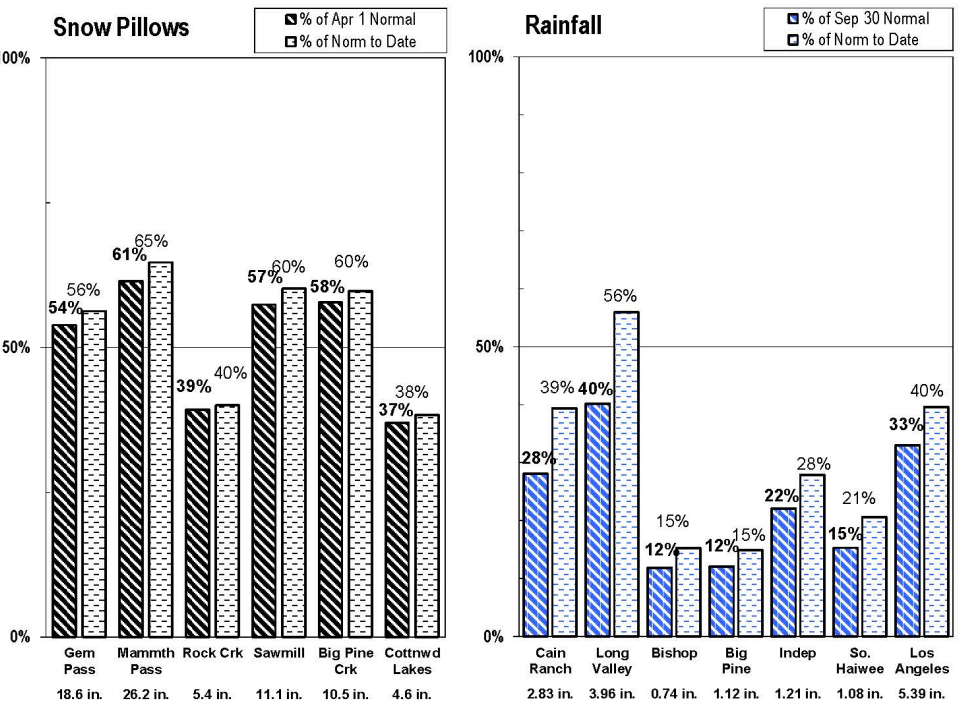
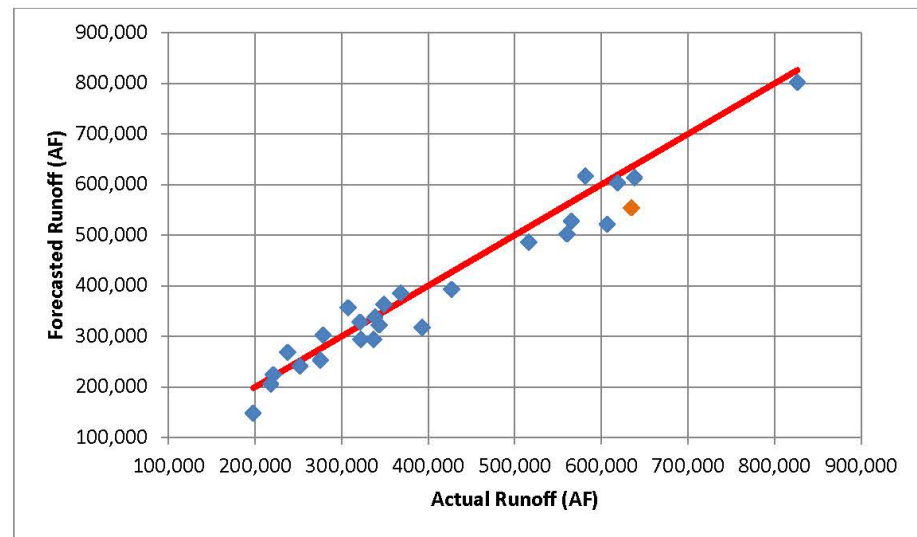
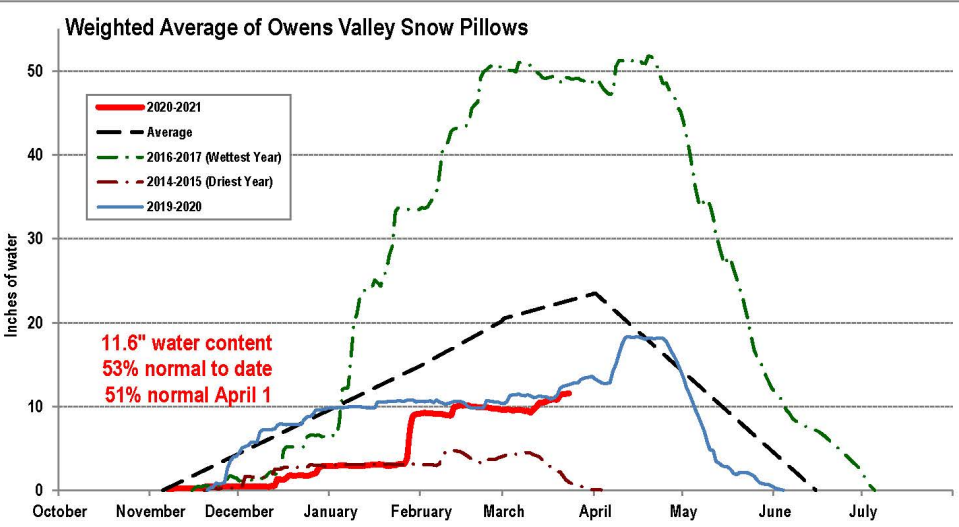


**EASTERN SIERRA
CURRENT PRECIPITATION CONDITIONS
March 23, 2021**



Measurement as Inches Water Content; Precipitation totals are cumulative for water year beginning Oct 1

2020-21 Forecast ~ 300,215 AF

Water Agreement

If two consecutive dry years when actual and forecasted OVRO for the April to September period is below normal and averages less than 75% of normal, the Department shall prepare a proposed plan for April 1-Sept 30.



Pumping to date 2020-21

Actual 2020-201 Pumping (in Acre-feet) through February 2021

	Laws	Bishop	Big Pine	TA	TS	IO	SS	BG	LP	Total
Apr	1,640	1,411	1,909	1,180	876	1,292	171	228	111	8,818
May	1,518	1,540	2,068	1,491	936	1,299	152	166	129	9,299
Jun	1,263	1,546	1,719	1,172	911	875	167	298	150	8,101
Jul	1,529	1,630	1,741	1,183	935	900	163	254	165	8,500
Aug	1,304	1,262	1,076	1,179	966	740	137	256	174	7,094
Sept	1,331	1,045	581	1,134	933	782	174	233	115	6,328
Oct	369	507	605	1,181	963	167	82	281	40	4,195
Nov	276	318	589	1,265	915	269	1	235	24	3,892
Dec	272	245	613	1,484	948	421	-	199	19	4,201
Jan	269	263	839	1,479	933	431	-	87	17	4,318
Feb	9	317	1,237	1,274	803	289	-	72	17	4,018
Mar										-
TOTAL	9,780	10,084	12,977	14,022	10,119	7,465	1,047	2,309	961	68,764
Actual vs Planned LADWP Maximum (thru Feb.)	100%	82%	60%	78%	99%	75%	109%	89%	101%	80%
Actual vs Planned LADWP Minimum (thru Feb.)	133%	93%	67%	90%	138%	120%	109%	120%	101%	98%
Actual vs ICWD Recommended (ROY totals)	129%	79%	60%	148%	92%	120%	109%	220%	98%	96%

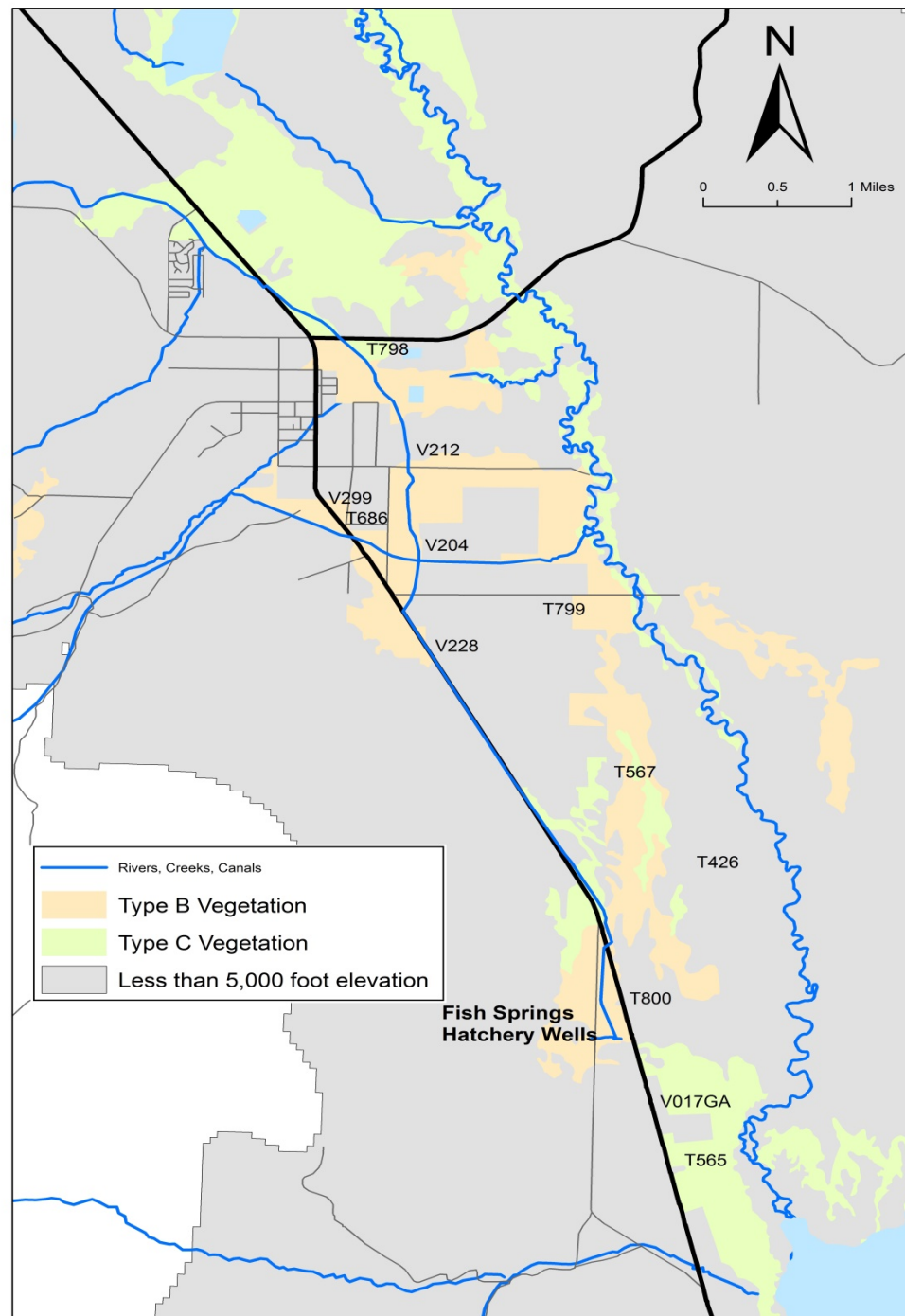
LADWP ROY Max 93000
 LADWP ROY Min 75000
 ICWD Response 71545

Big Pine Area monitoring wells

Hatchery well capacity:
18.5 cfs and 12.5 cfs

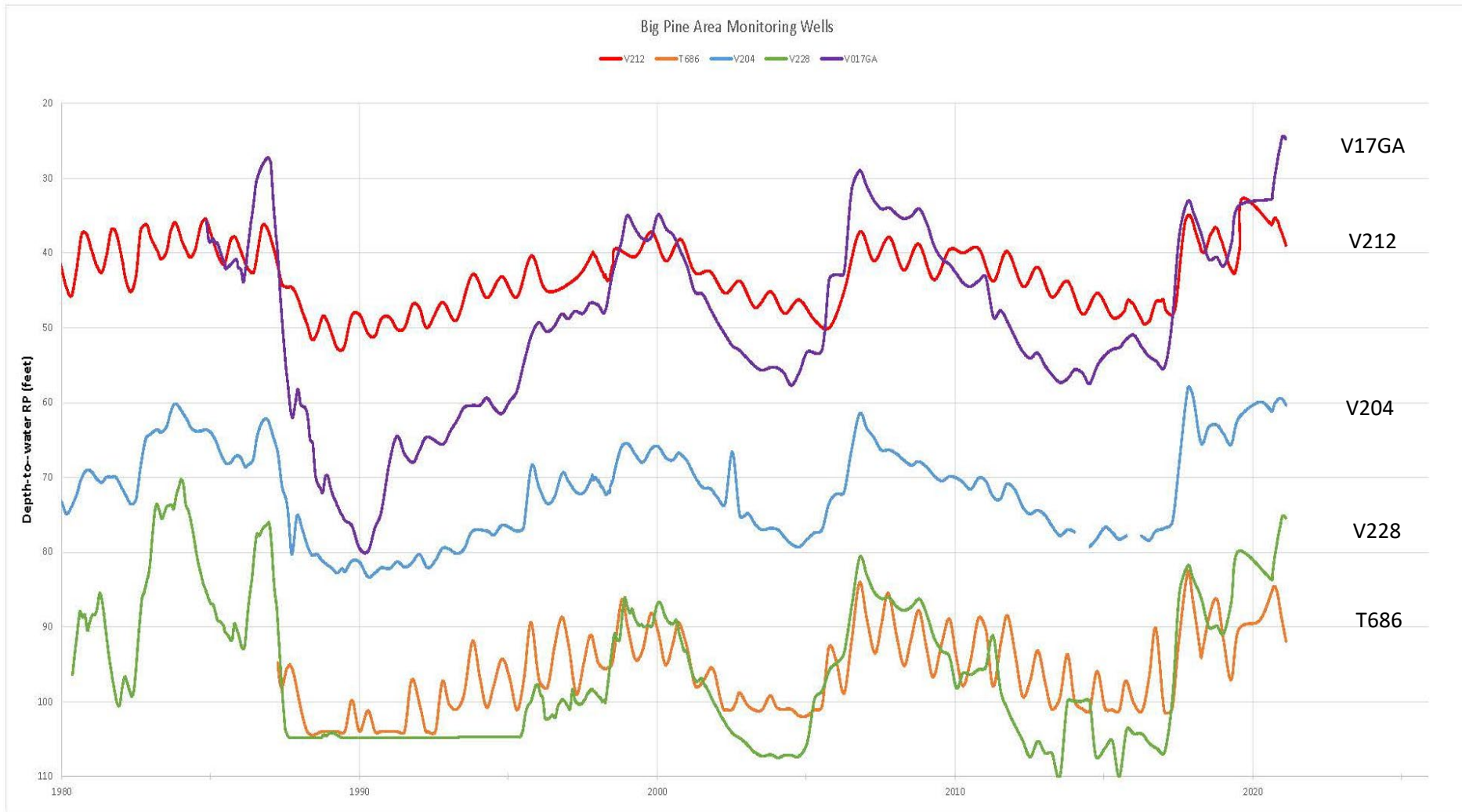
219W capacity: 5.1 cfs

218W capacity: 3.6 cfs



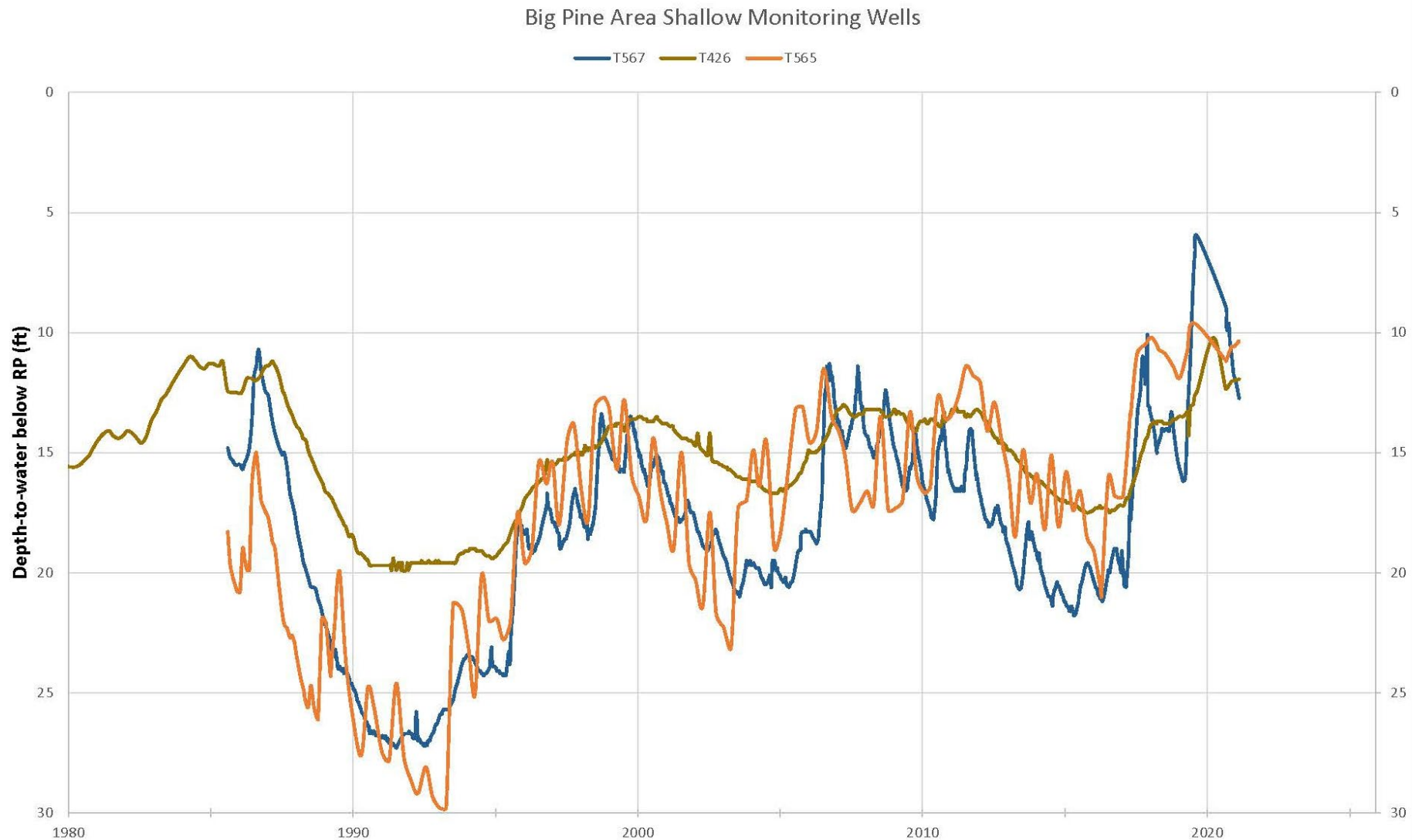


Big Pine Area Deep Monitoring Wells



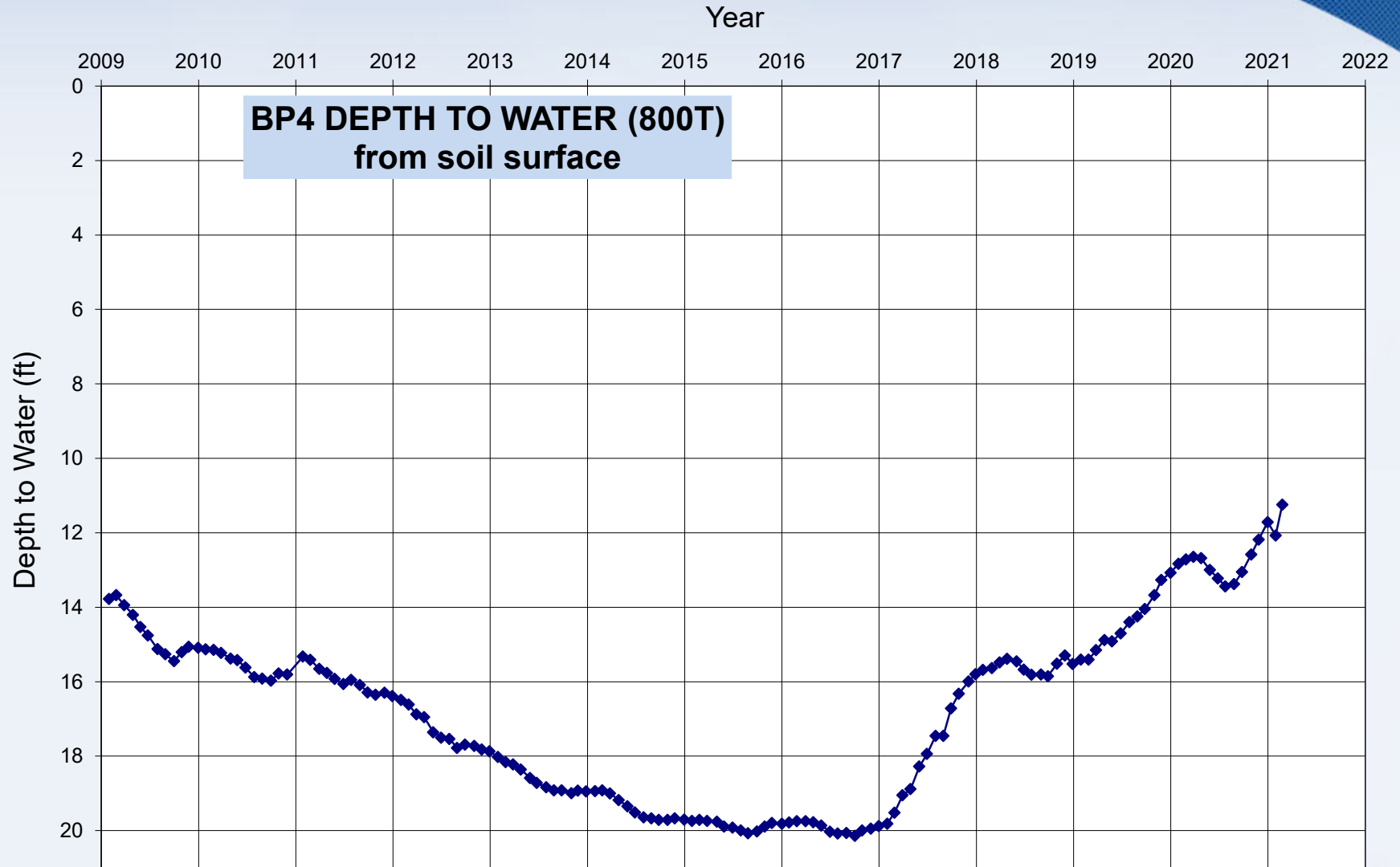


Big Pine Area Shallow Monitoring Wells



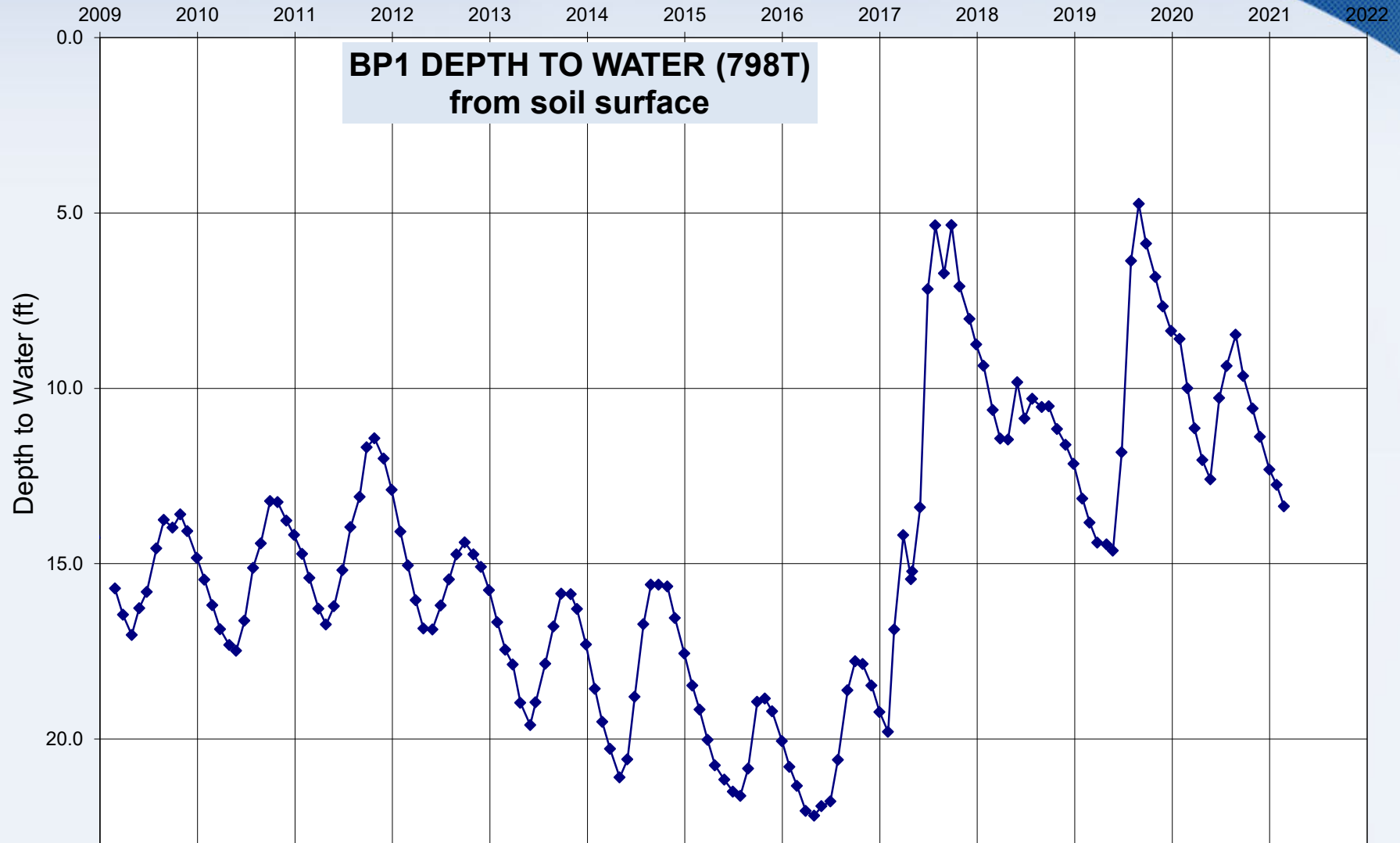


Big Pine On/Off Monitoring Site Hydrograph



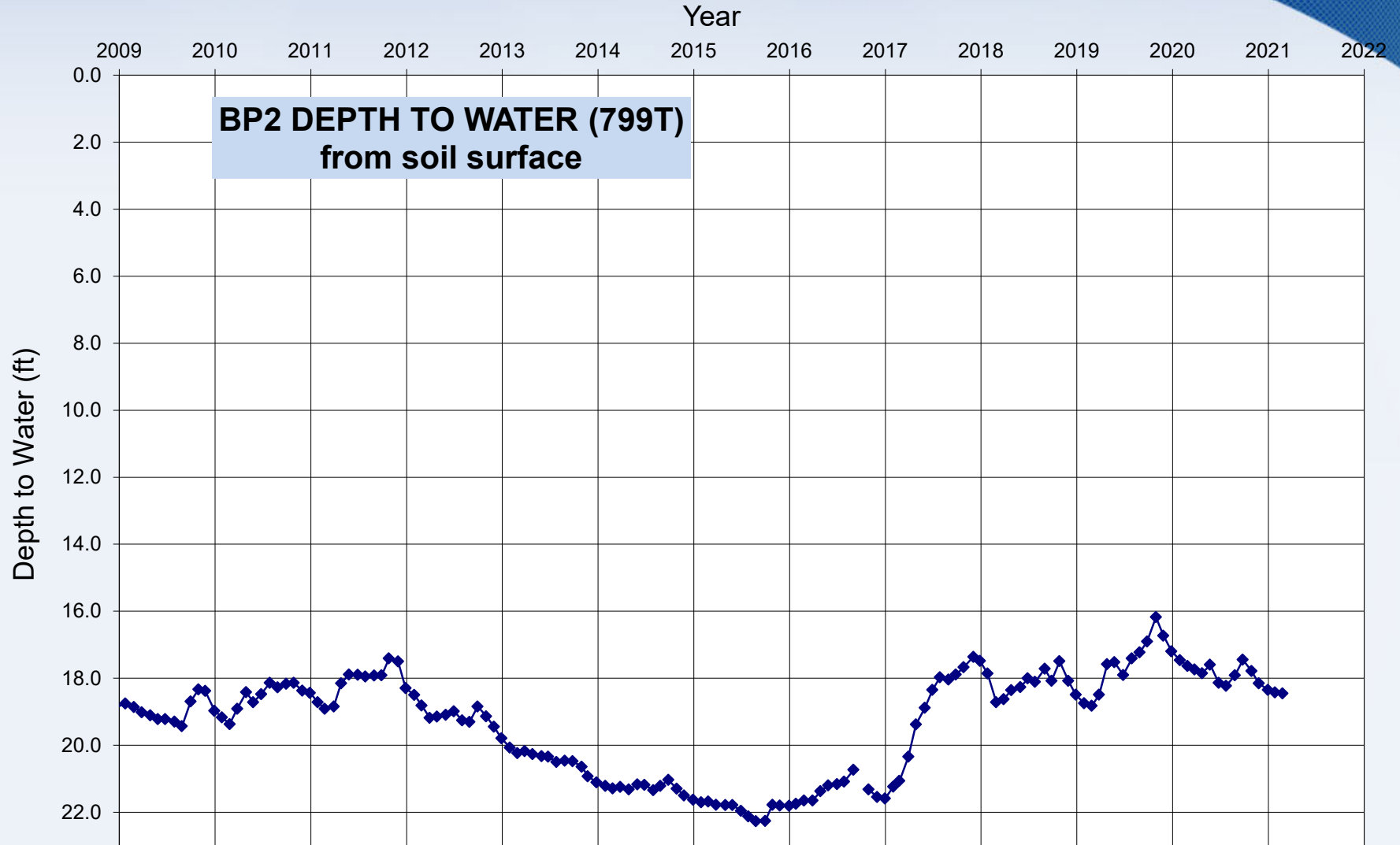


Big Pine On/Off Monitoring Site Hydrograph



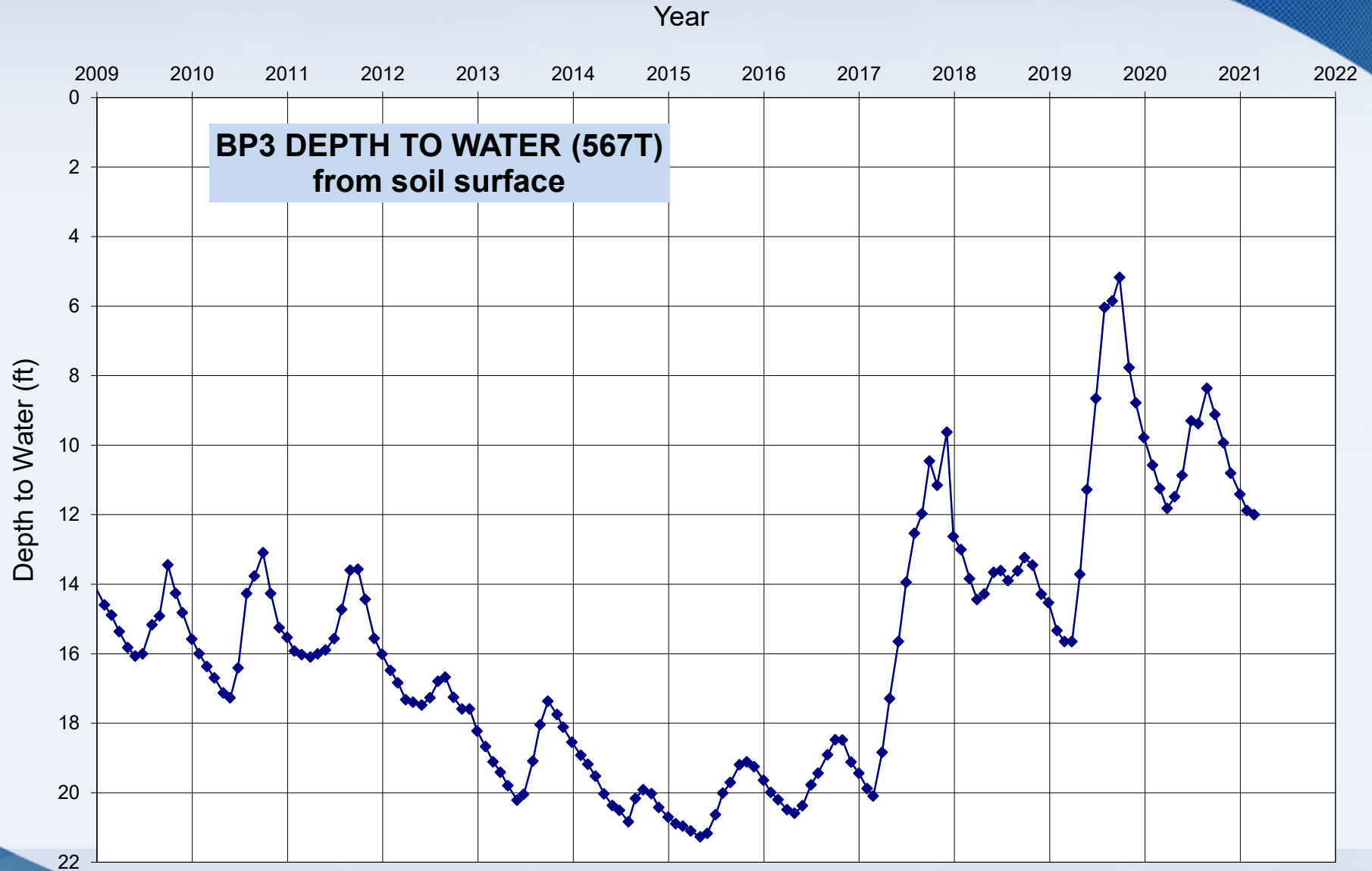


Big Pine On/Off Monitoring Site Hydrograph





Big Pine On/Off Monitoring Site Hydrograph



Big Pine Area monitoring wells

Water Level response Maximum recovery

Deep cinder aquifer:

V017ga, 8.4 ft

V228, 8.5 ft

V204, 1.6 ft

V212, -1.4 ft

T686, -4.1 ft

Shallow aquifer:

T565, 0.8 ft

T800, 2.1 ft,

T426, 0.4 ft

T567 and north, no
effect observed.

