

2020 Owens Valley Vegetation Conditions

Inyo County Water Commission
Meeting

January 21, 2021

Outline

1. Monitoring program
2. Wellfield and control parcel comparisons
3. Webmap of monitored parcels and location of data reports
4. NDVI remote sensing

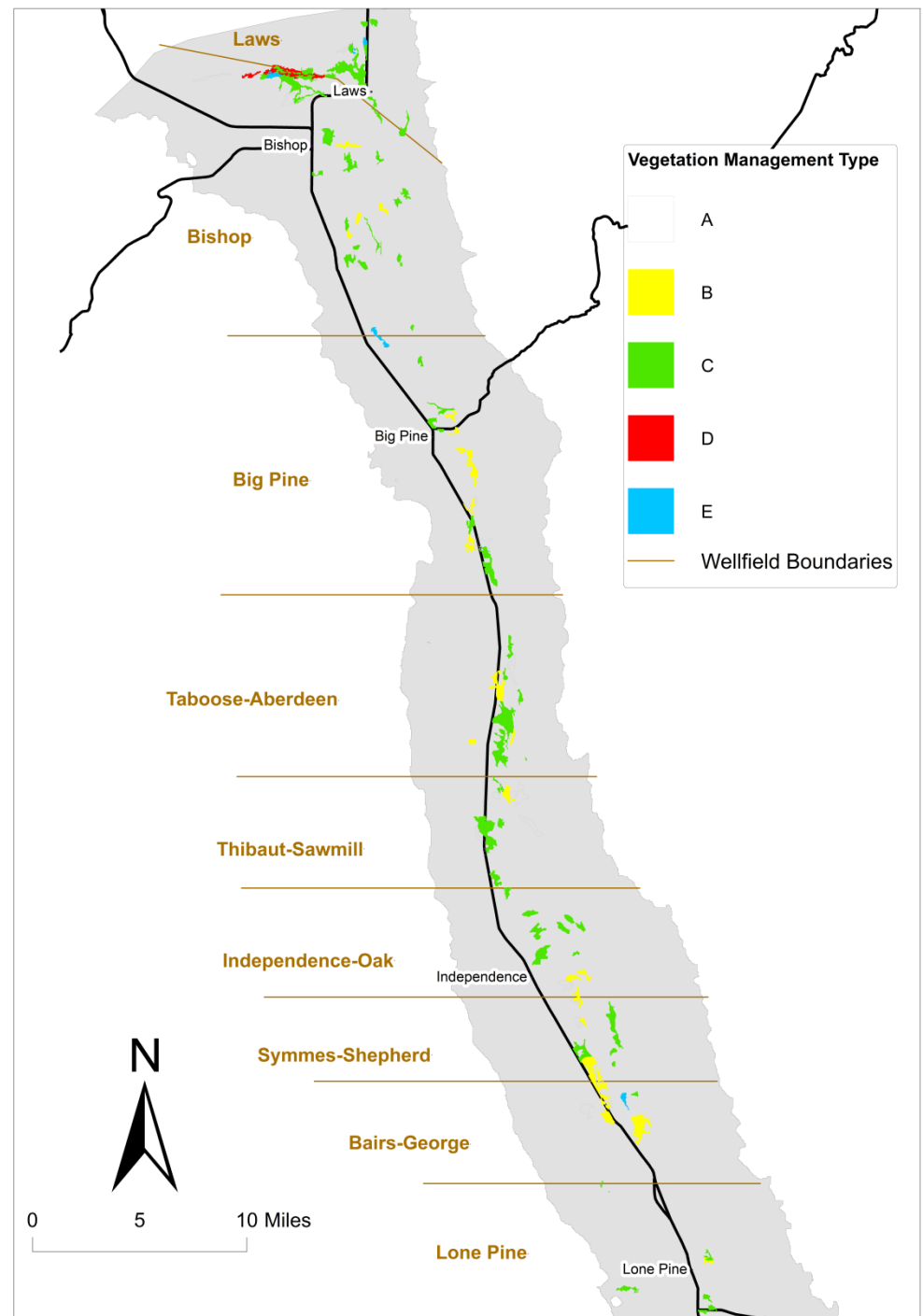
Agreement Goals

- 1) Avoid causing significant decreases in live vegetation cover.
- 2) Avoid changing a significant amount of vegetation from one classification to a lower (alphabetically) classification [e.g. Type C to B].

Field Monitoring

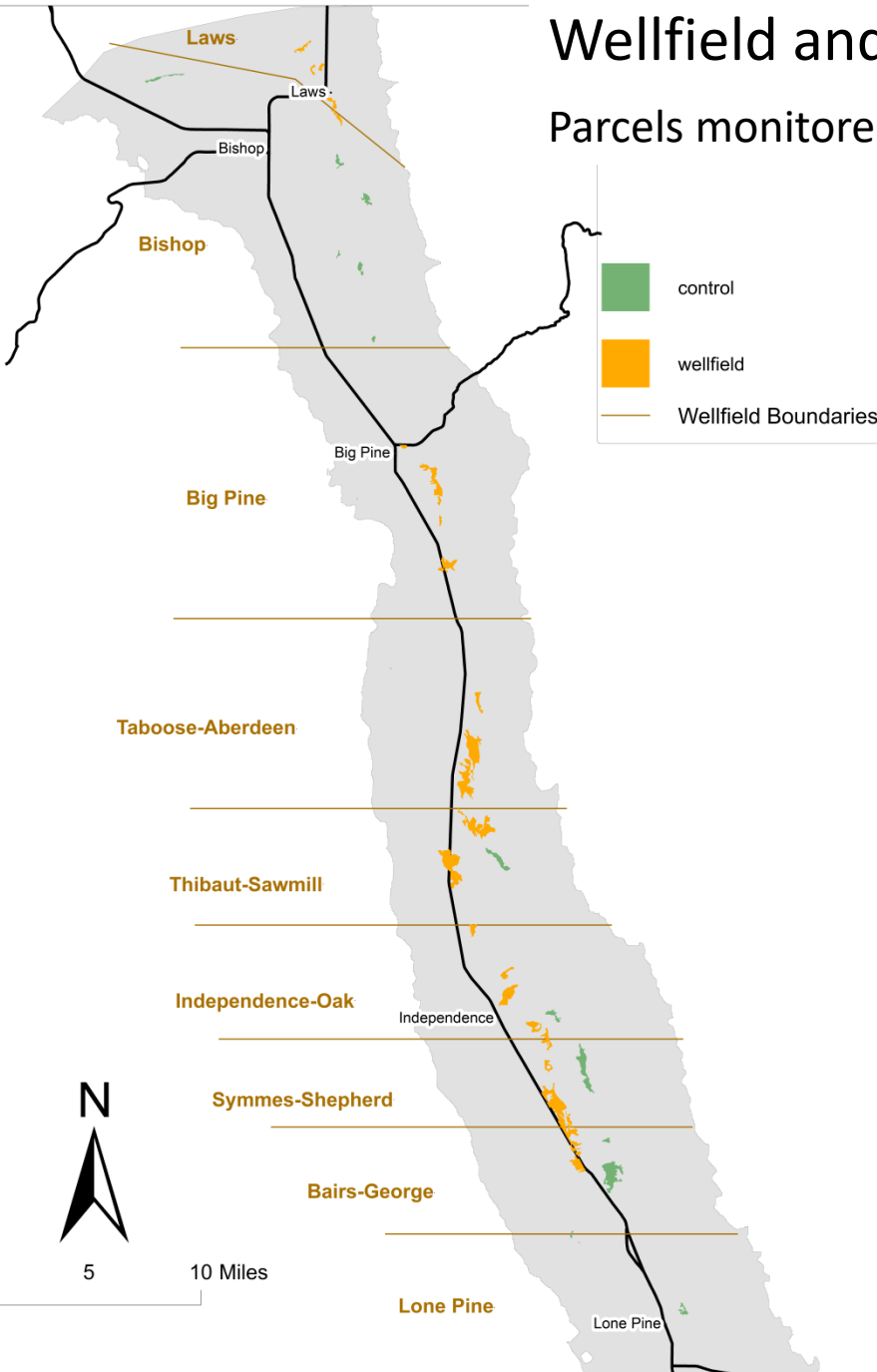
~1,600 transects

140 parcels



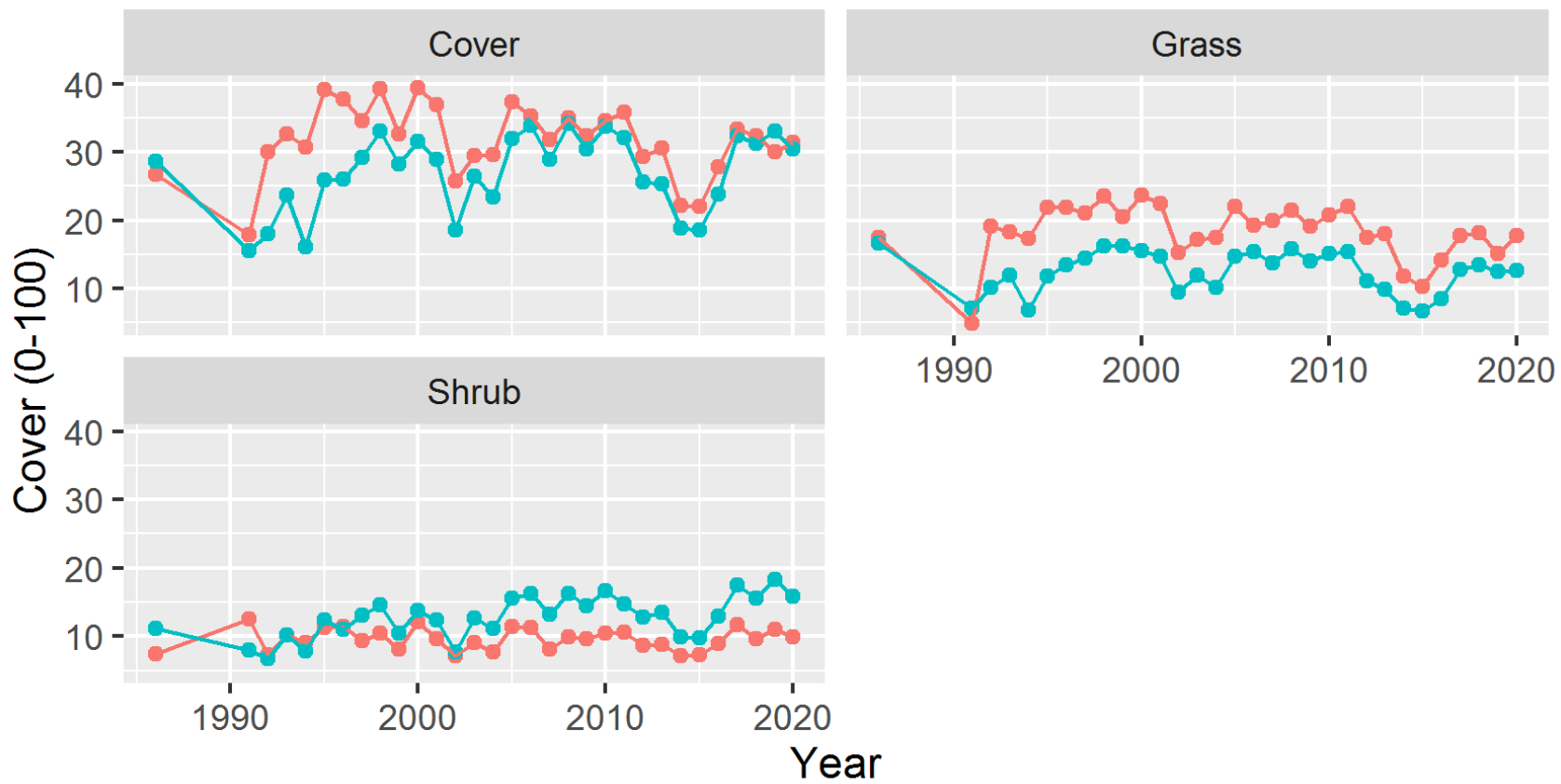
Wellfield and Control Group Summary

Parcels monitored every year 1992-2020



Green - Control group ($n = 13$)
Orange - Wellfield group ($n = 32$)

Type Control Wellfield





Search

THE INYO COUNTY WATER DEPARTMENT

[HOME](#)

[MEETINGS](#)

[PROJECTS](#)

[DOCUMENTS](#)

[MAPS & DATA](#)

[CONTACT US](#)

Water Commission
Inyo/LA Technical Group

Coso Hay Ranch
Mitigation

Governing Documents
LADWP Pumping

Hydrology
Vegetation

About Us
Location

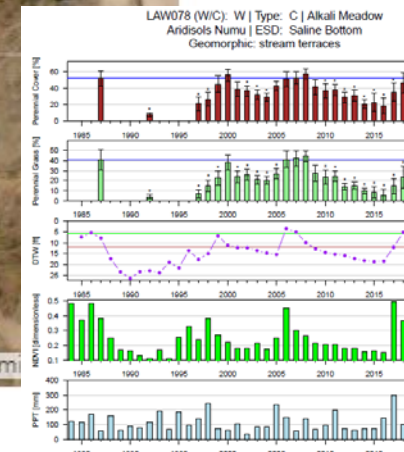
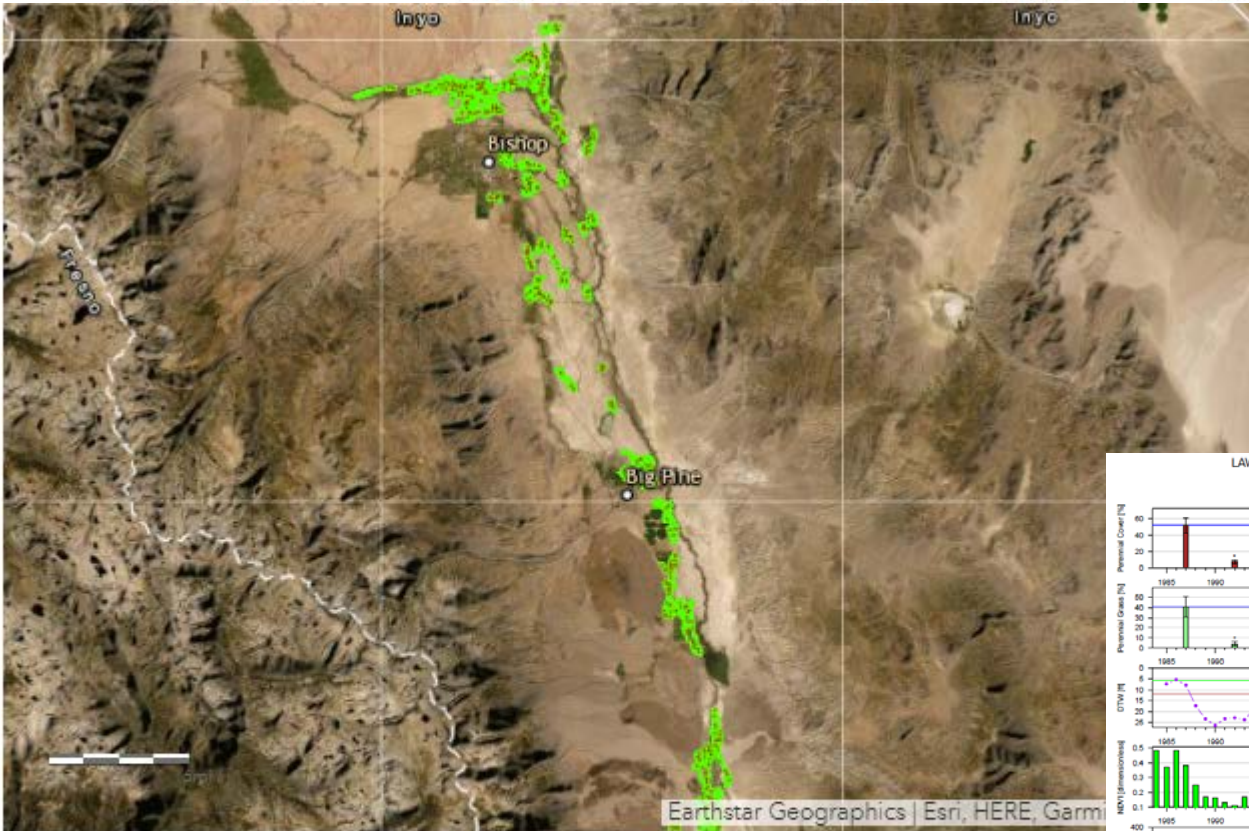


Figure 92: Two-Sample t-Test. Baseline (ppt) vs. reinventory (* p < 0.05). Baseline sample size (n = 7). Current year sample size (n = 8). Error bars = 95%

Location of pdf parcel data and webmap

[\[pdf\] Parcel Plots 2019](#) – Species cover, depth-to-groundwater, NDVI, and precipitation 1984-2019.

NDVI webmap

