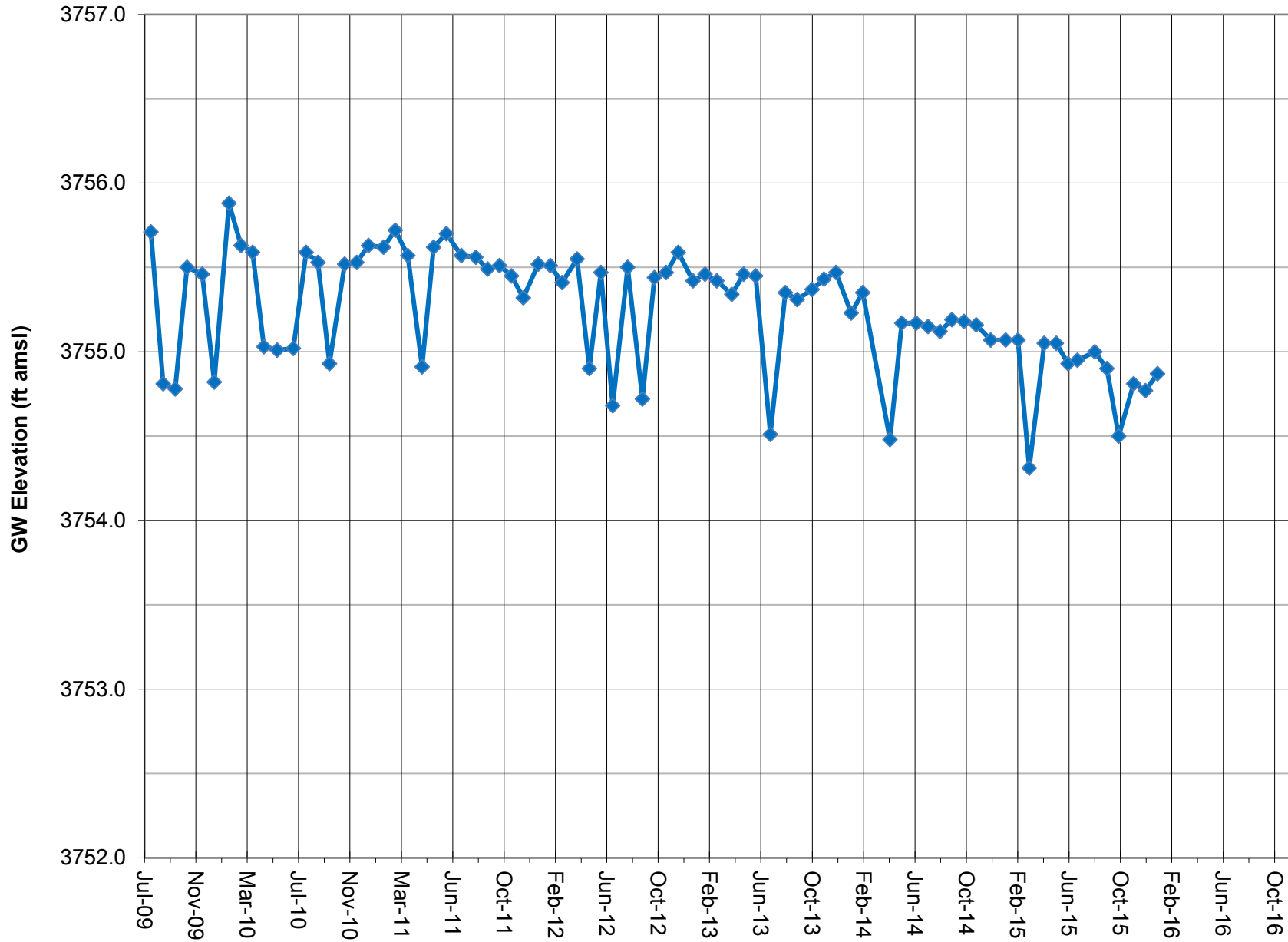
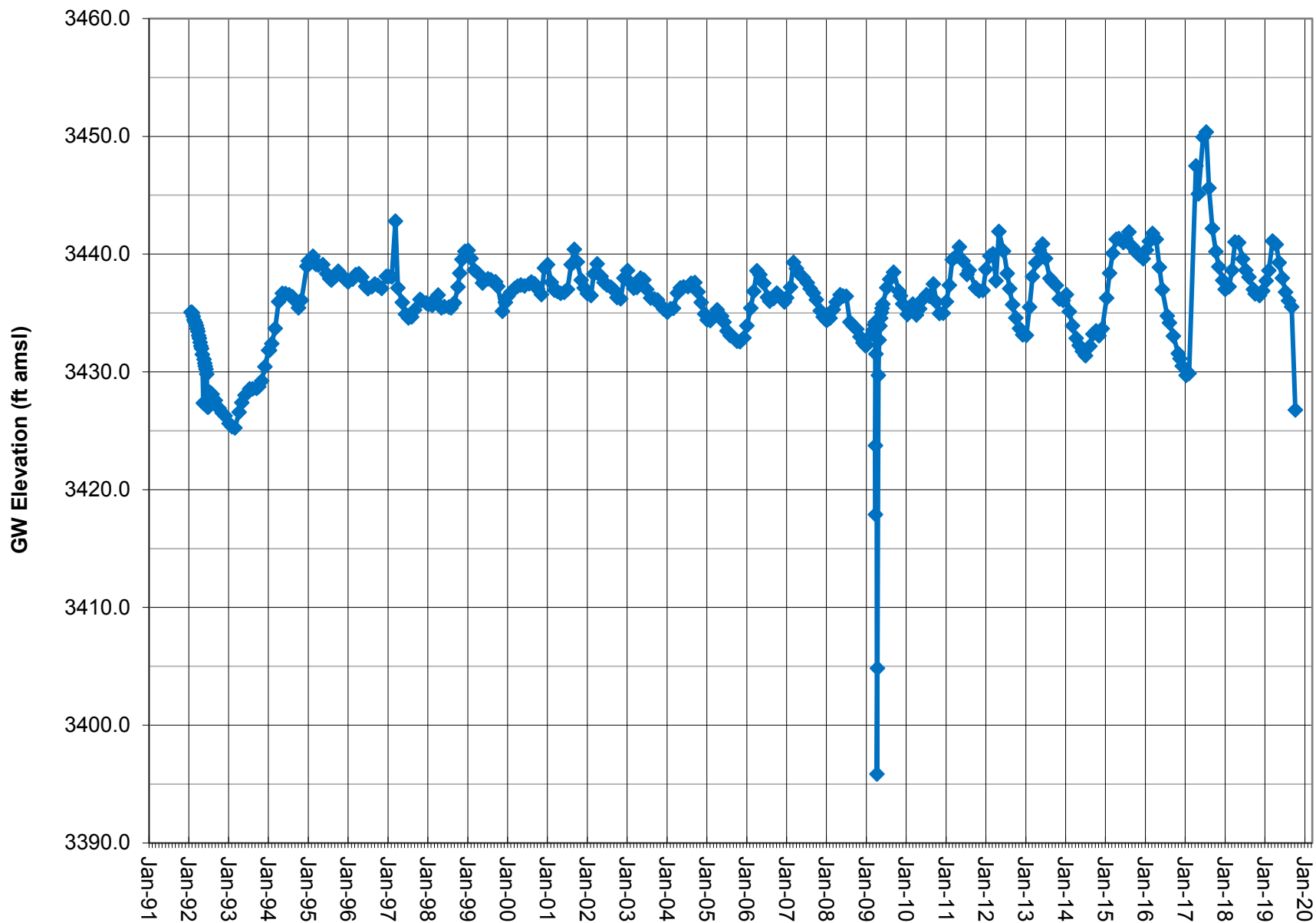


## GROUNDWATER ELEVATION DATA - Long-Term (Manual) RV010 - Enchanted Village Well



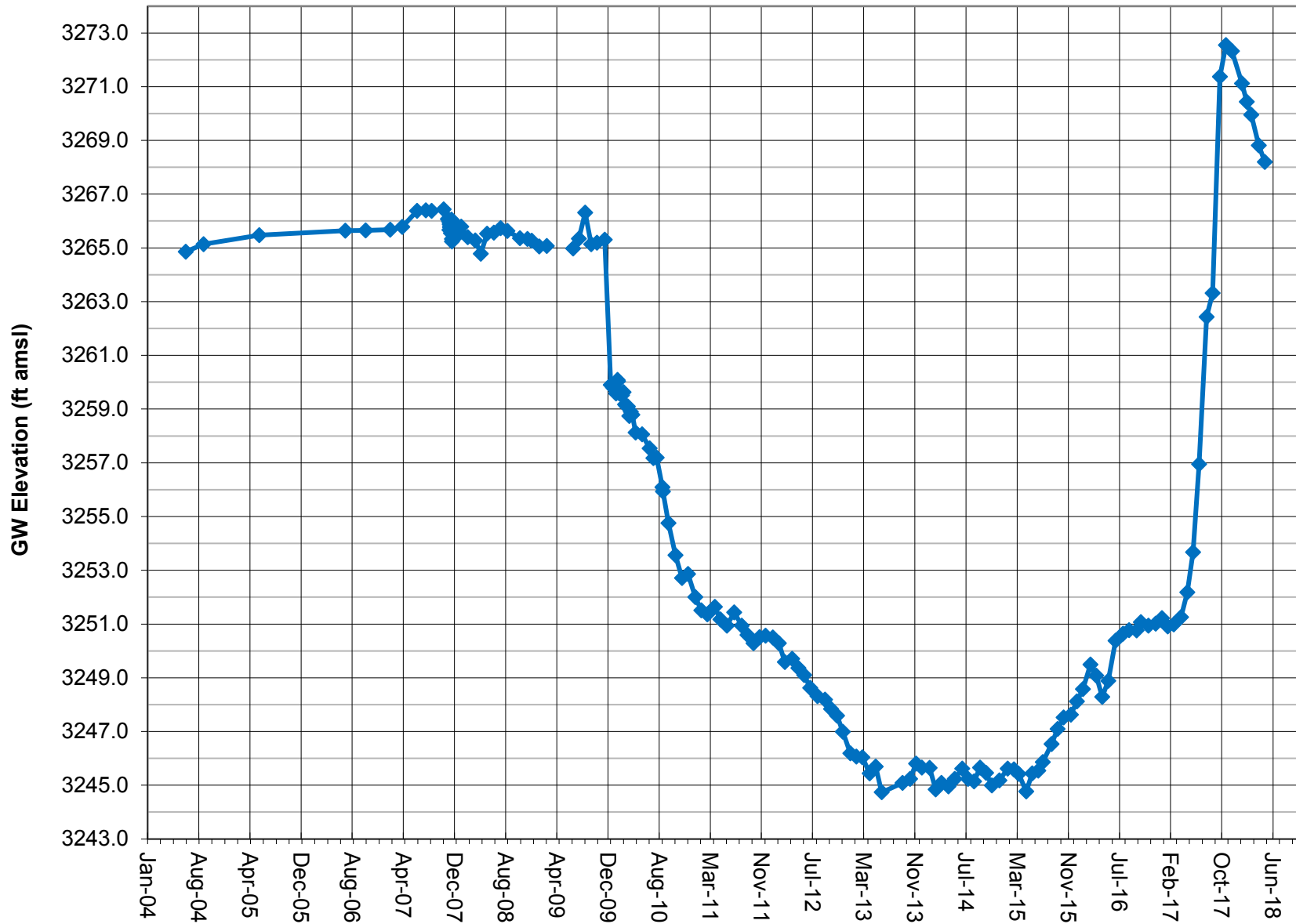
Note: Groundwater elevation data based on manual depth-to-water measurements.  
 Enchanted Village Well (Dews) is an actively pumped domestic supply well.  
 Monitoring discontinued Feb. 2016 per ICWD

# GROUNDWATER ELEVATION DATA - Long-Term (Manual) RV020 - LADWP 816 Well



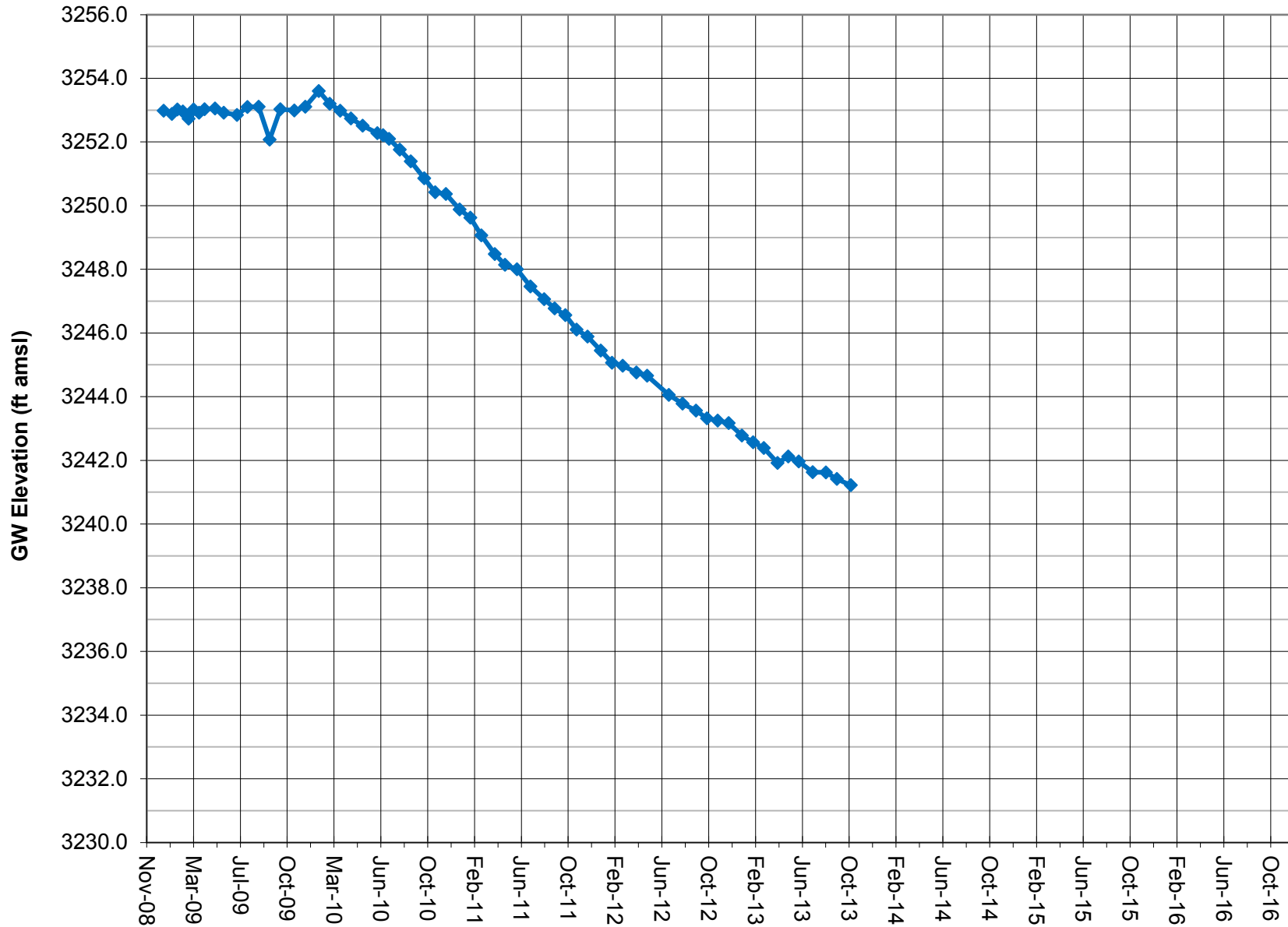
Note: Groundwater elevation data based on manual depth-to-water measurements.  
LADWP conducted a groundwater pump test on a nearby well in the first quarter 2009.  
Coso Operating Co. initiated Hay Ranch Project pumping on 12/25/09.

## GROUNDWATER ELEVATION DATA - Long-Term (Manual) RV030 - Cal Pumice Well



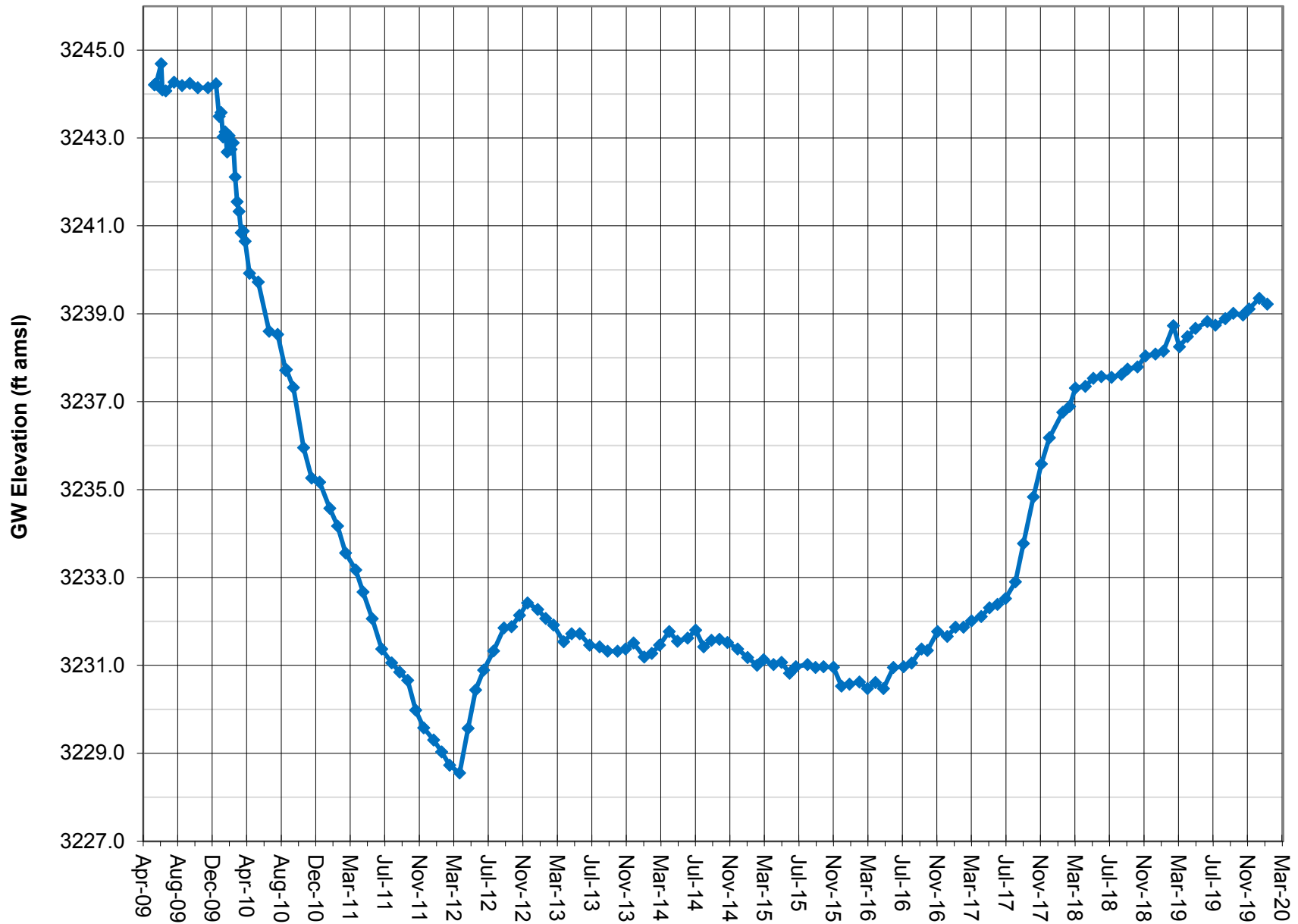
Note: Well was measured to be dry on 6/13/2018.  
 The notable DTW change in late 2009 was confirmed by in-well PT.  
 Coso Operating Co. initiated Hay Ranch Project pumping on 12/25/09.

## GROUNDWATER ELEVATION DATA - Long-Term (Manual) RV040 - Dunmovin Well



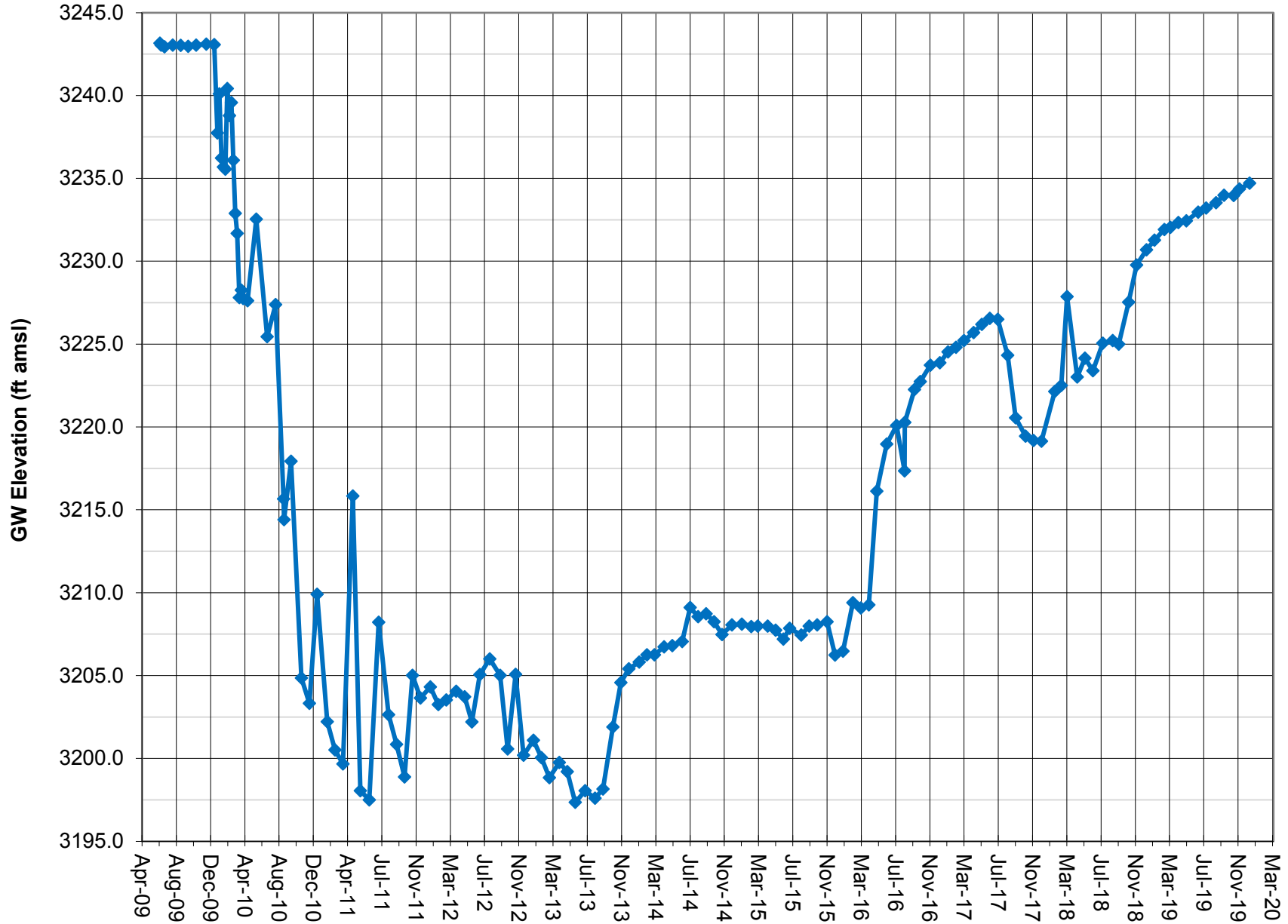
Note: Groundwater elevation data based on manual depth-to-water measurements.  
 Dunmovin Well is an active domestic supply well.  
 Monitoring discontinued in October 2013 due to new in-well infrastructure.

## GROUNDWATER ELEVATION DATA - Long-Term (Manual) RV060 - Hay Ranch 1A Well



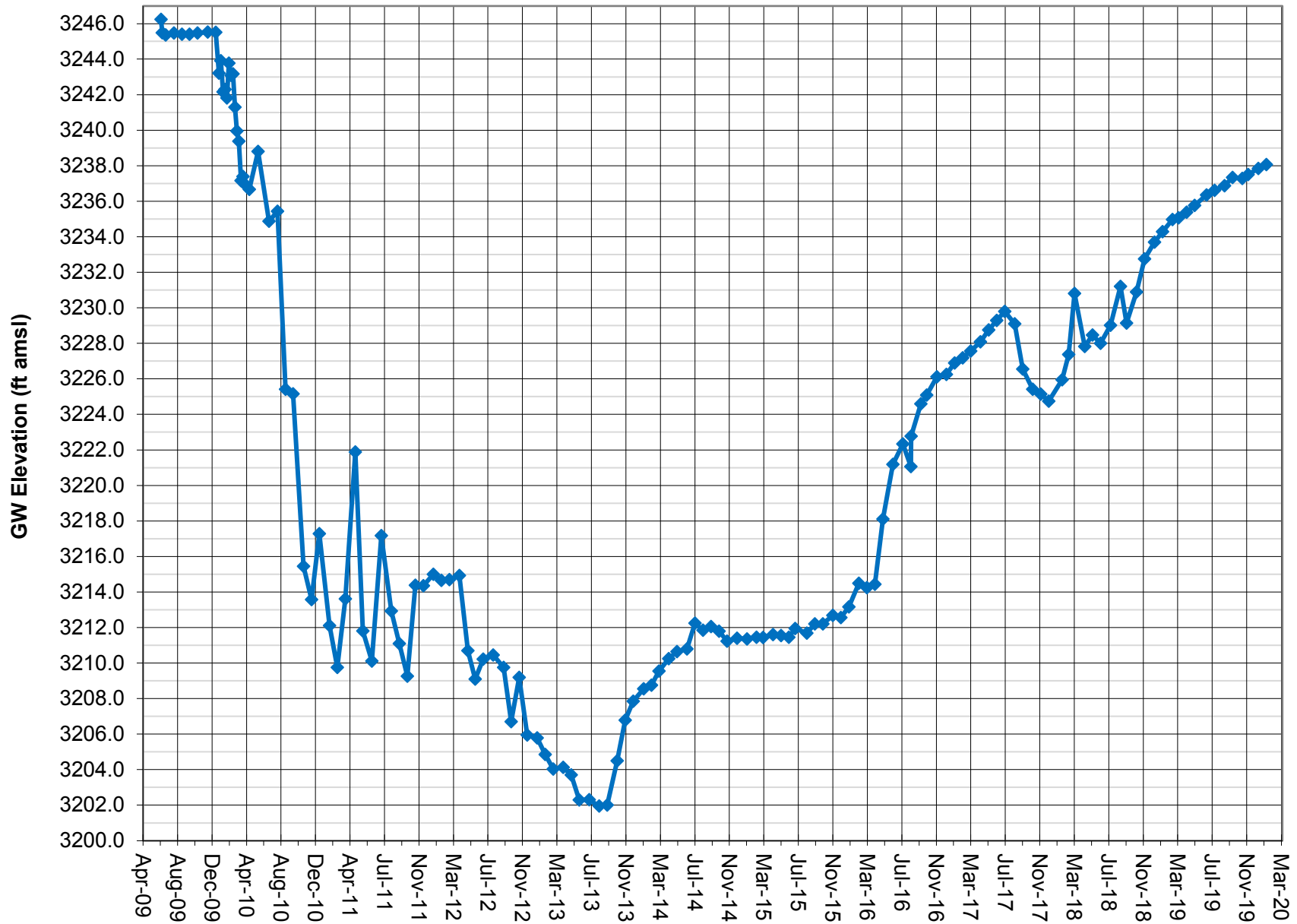
Note: Groundwater elevation data based on manual depth-to-water measurements. Lines between data points are approximations.  
 Screened interval is 170-260 feet.  
 Coso Operating Co. initiated Hay Ranch Project pumping on 12/25/09.

## GROUNDWATER ELEVATION DATA - Long-Term (Manual) RV061 - Hay Ranch 1B Well



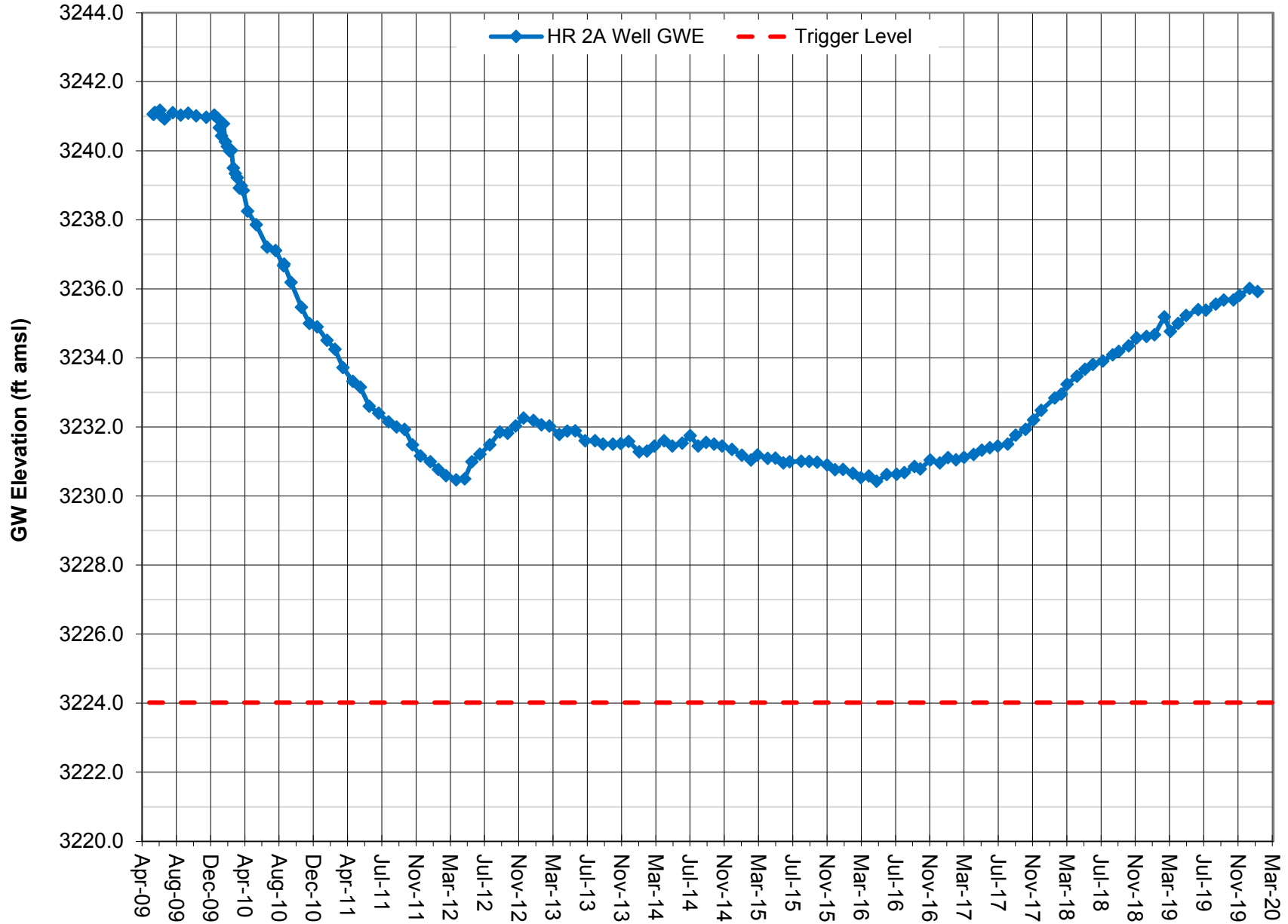
Note: Groundwater elevation data based on manual depth-to-water measurements. Lines between data points are approximations.  
 Screened interval is 490-540 feet.  
 Coso Operating Co. initiated Hay Ranch Project pumping on 12/25/09.

## GROUNDWATER ELEVATION DATA - Long-Term (Manual) RV062 - Hay Ranch 1C Well



Note: Groundwater elevation data based on manual depth-to-water measurements. Lines between data points are approximations.  
 Screened interval is 340-405 feet.  
 Coso Operating Co. initiated Hay Ranch Project pumping on 12/25/09.

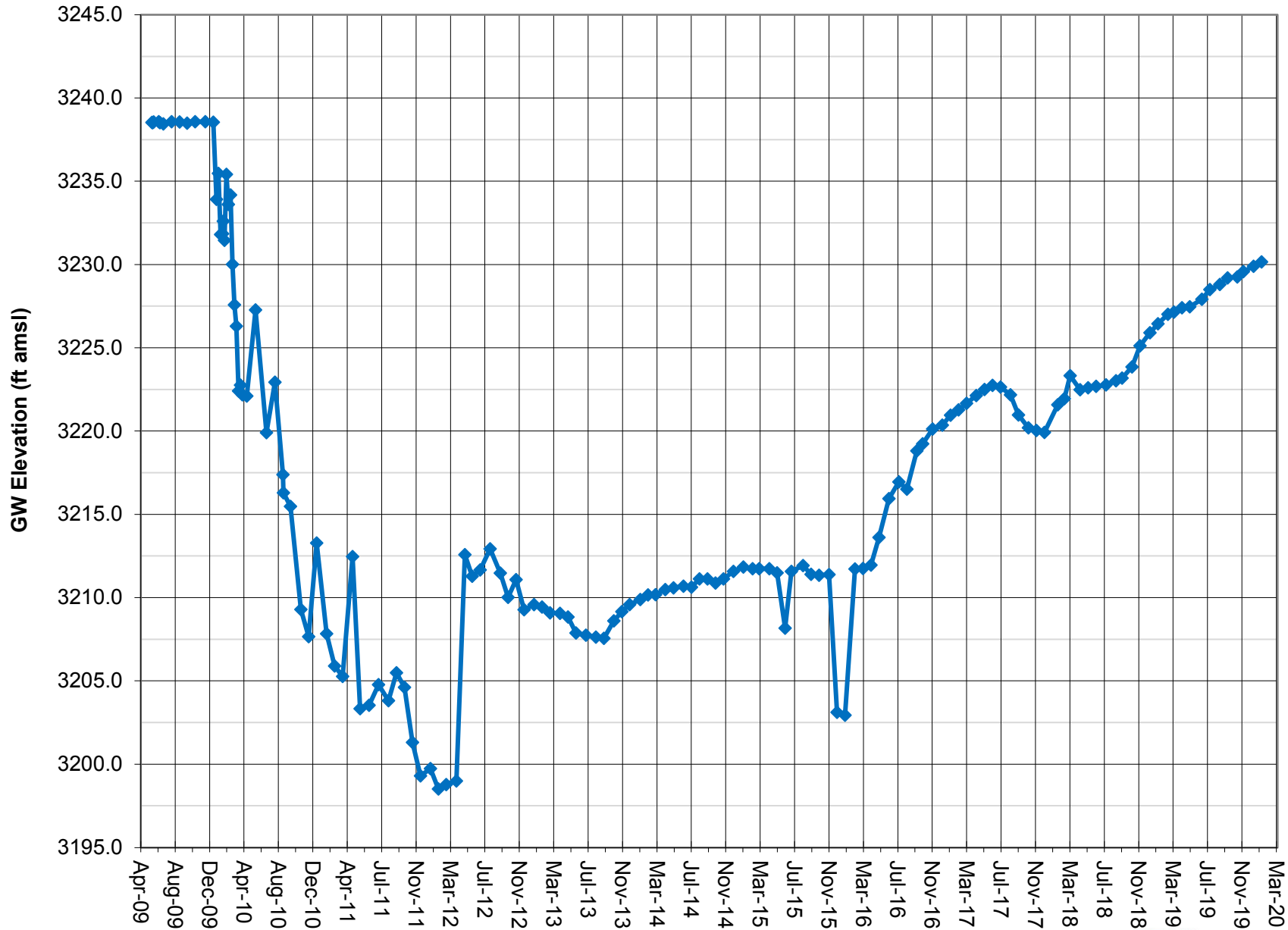
## GROUNDWATER ELEVATION DATA - Long-Term (Manual) RV080- Hay Ranch 2A Well



Note: Groundwater elevation data based on manual depth-to-water measurements. Lines between data points are approximations.  
 Screened interval is 180-300 feet.  
 Coso Operating Co. initiated Hay Ranch Project pumping on 12/25/09.

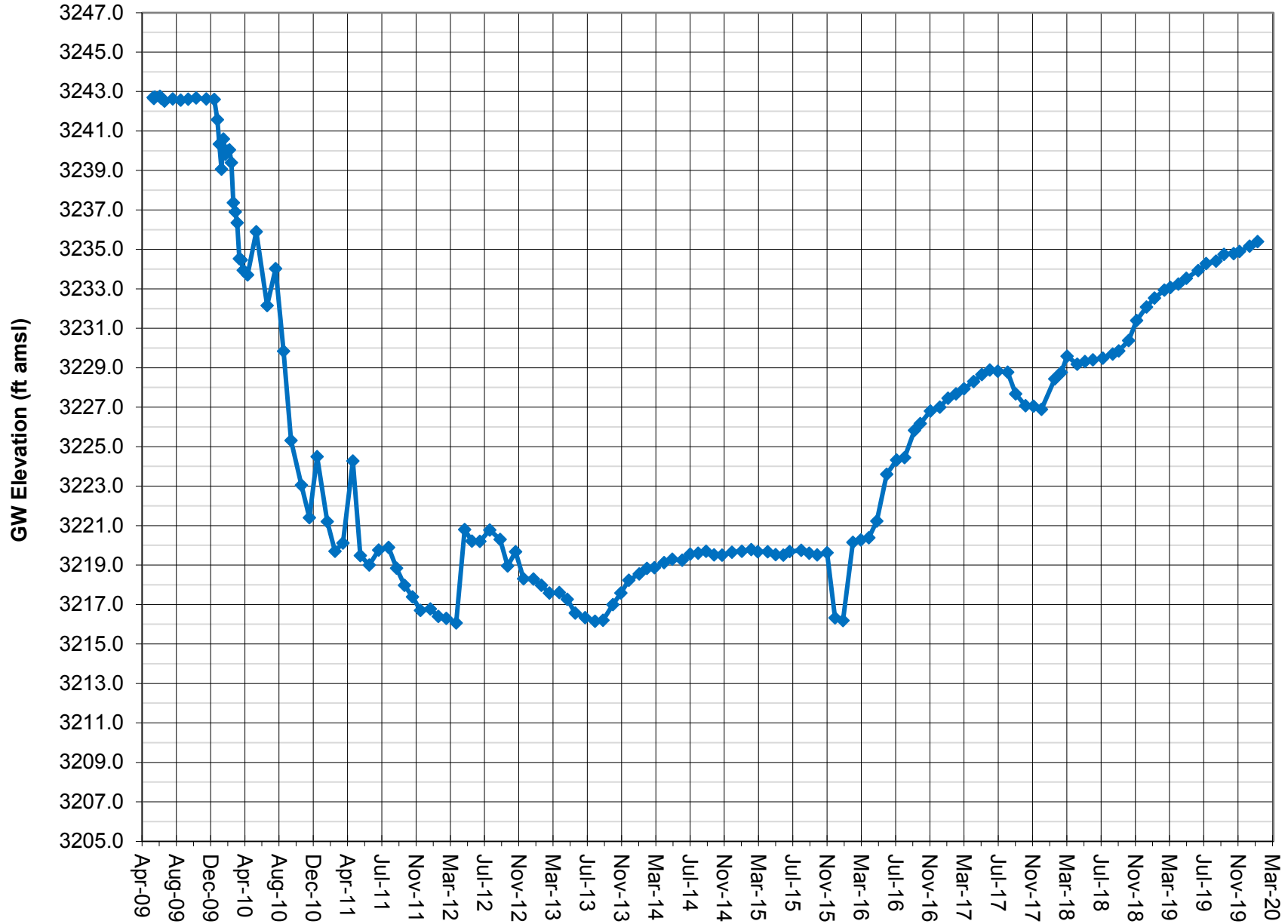


## GROUNDWATER ELEVATION DATA - Long-Term (Manual) RV081 - Hay Ranch 2B Well



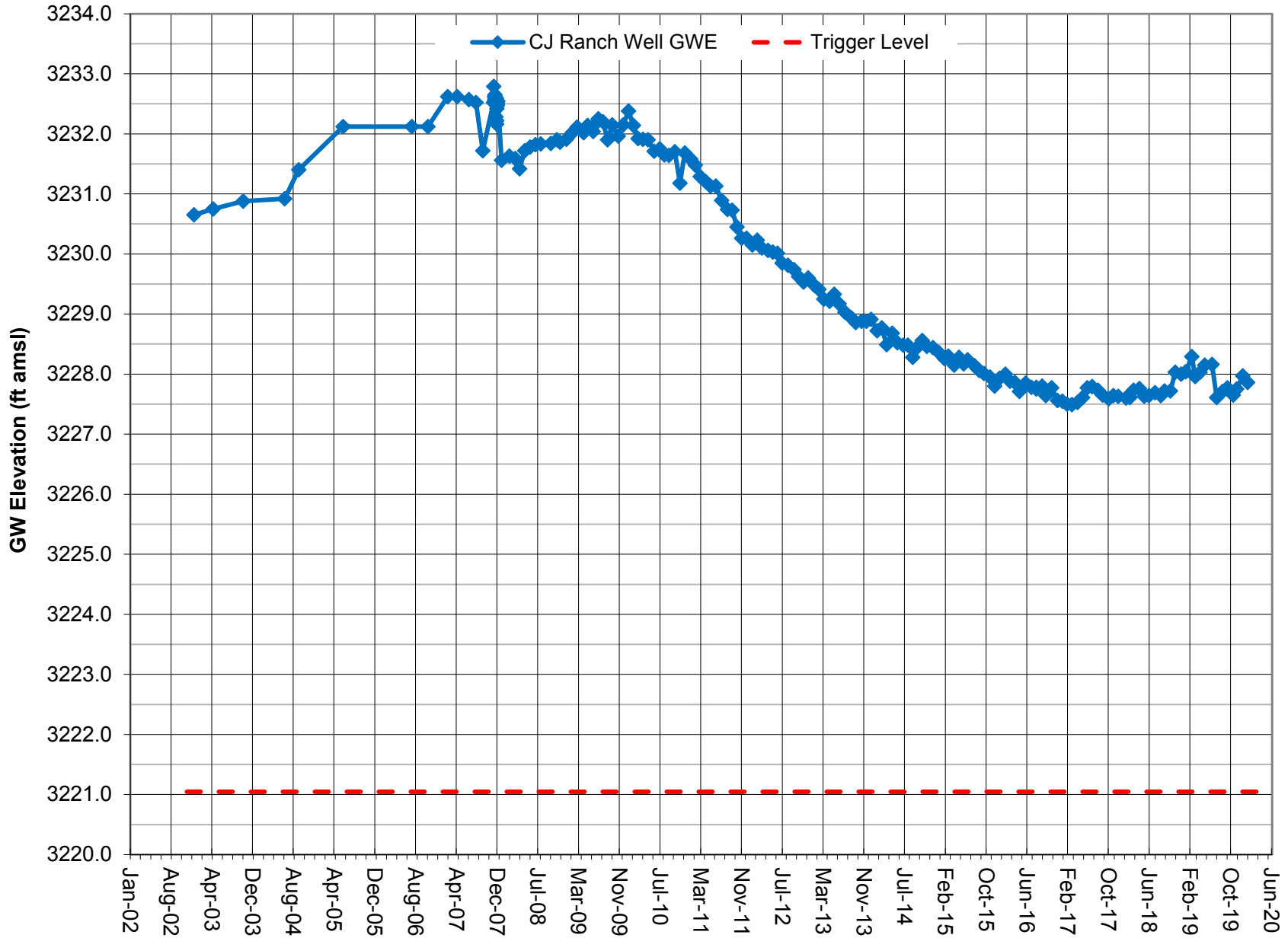
Note: Groundwater elevation data based on manual depth-to-water measurements. Lines between data points are approximations.  
 Screened interval is 519-584 feet.  
 Coso Operating Co. initiated Hay Ranch Project pumping on 12/25/09.

## GROUNDWATER ELEVATION DATA - Long-Term (Manual) RV082 - Hay Ranch 2C Well



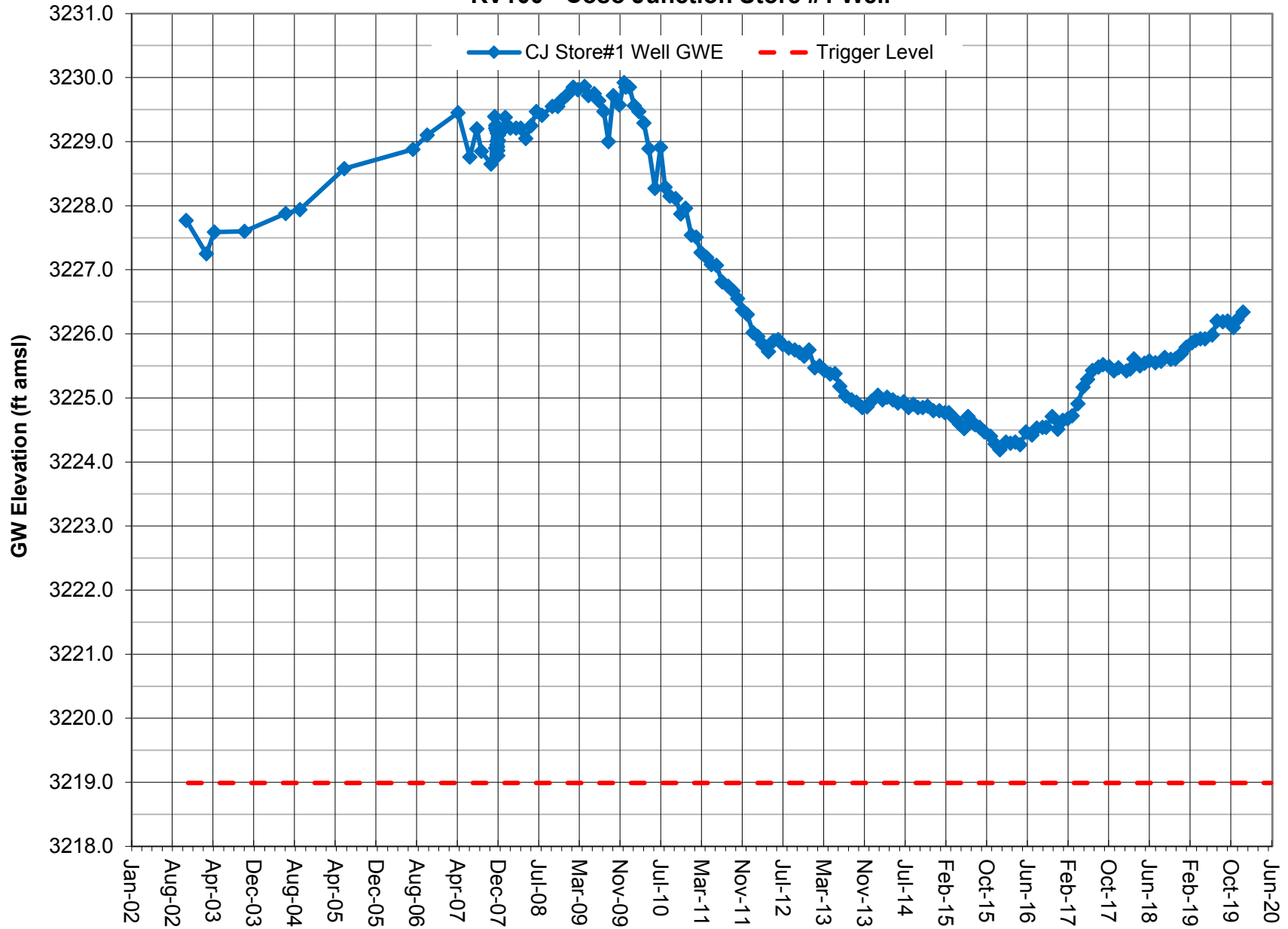
Note: Groundwater elevation data based on manual depth-to-water measurements. Lines between data points are approximations.  
 Screened interval is 370-420 feet.  
 Coso Operating Co. initiated Hay Ranch Project pumping on 12/25/09.

## GROUNDWATER ELEVATION DATA - Long-Term (Manual) RV090 - Coso Junction Ranch Well



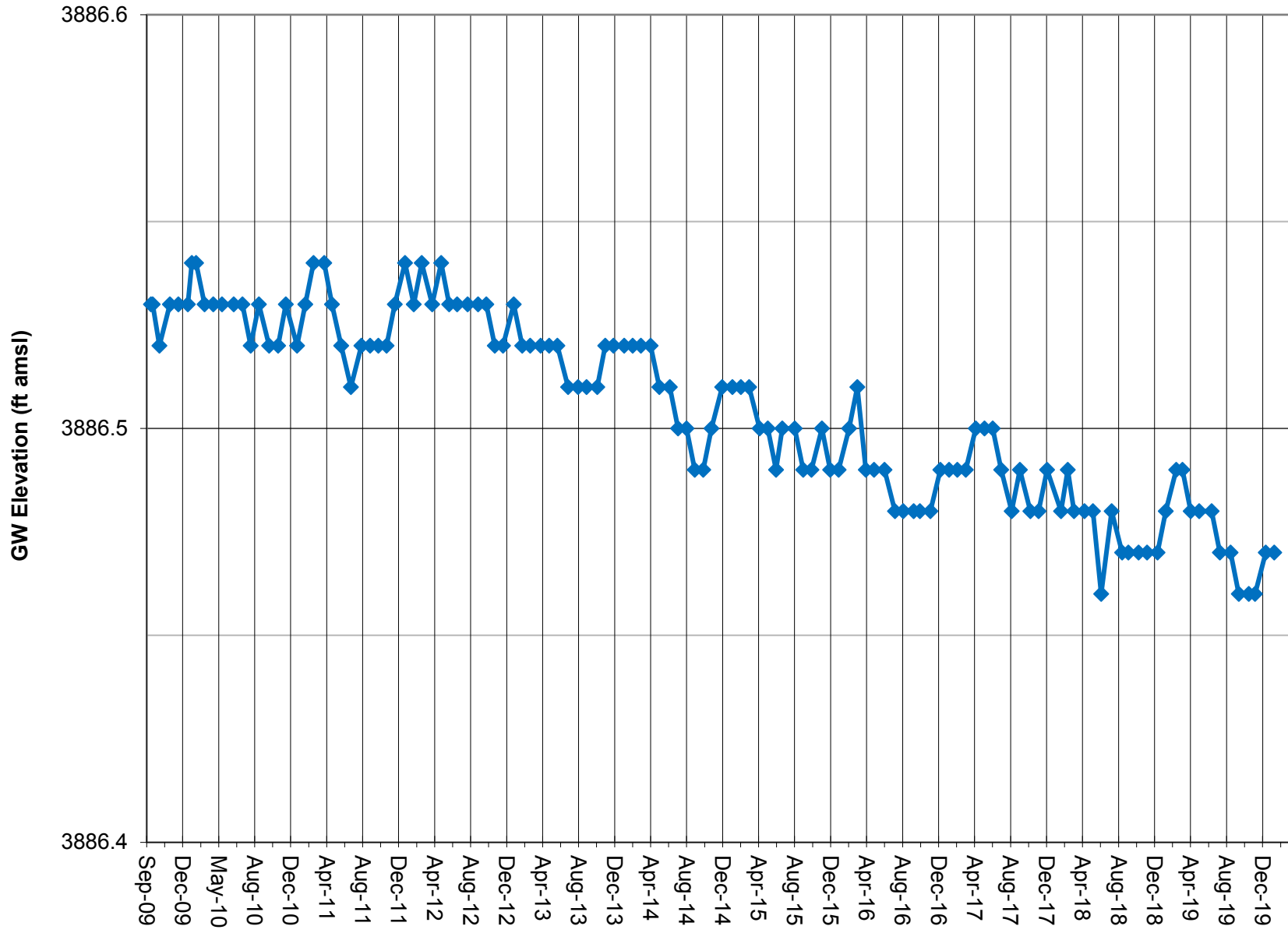
Note: Groundwater elevation data based on manual depth-to-water measurements.  
 Coso Operating Co. conducted a pump test on the Hay Ranch South Well in fourth quarter 2007.  
 Coso Operating Co. initiated Hay Ranch Project pumping on 12/25/09.

## GROUNDWATER ELEVATION DATA - Long-Term (Manual) RV100 - Coso Junction Store #1 Well



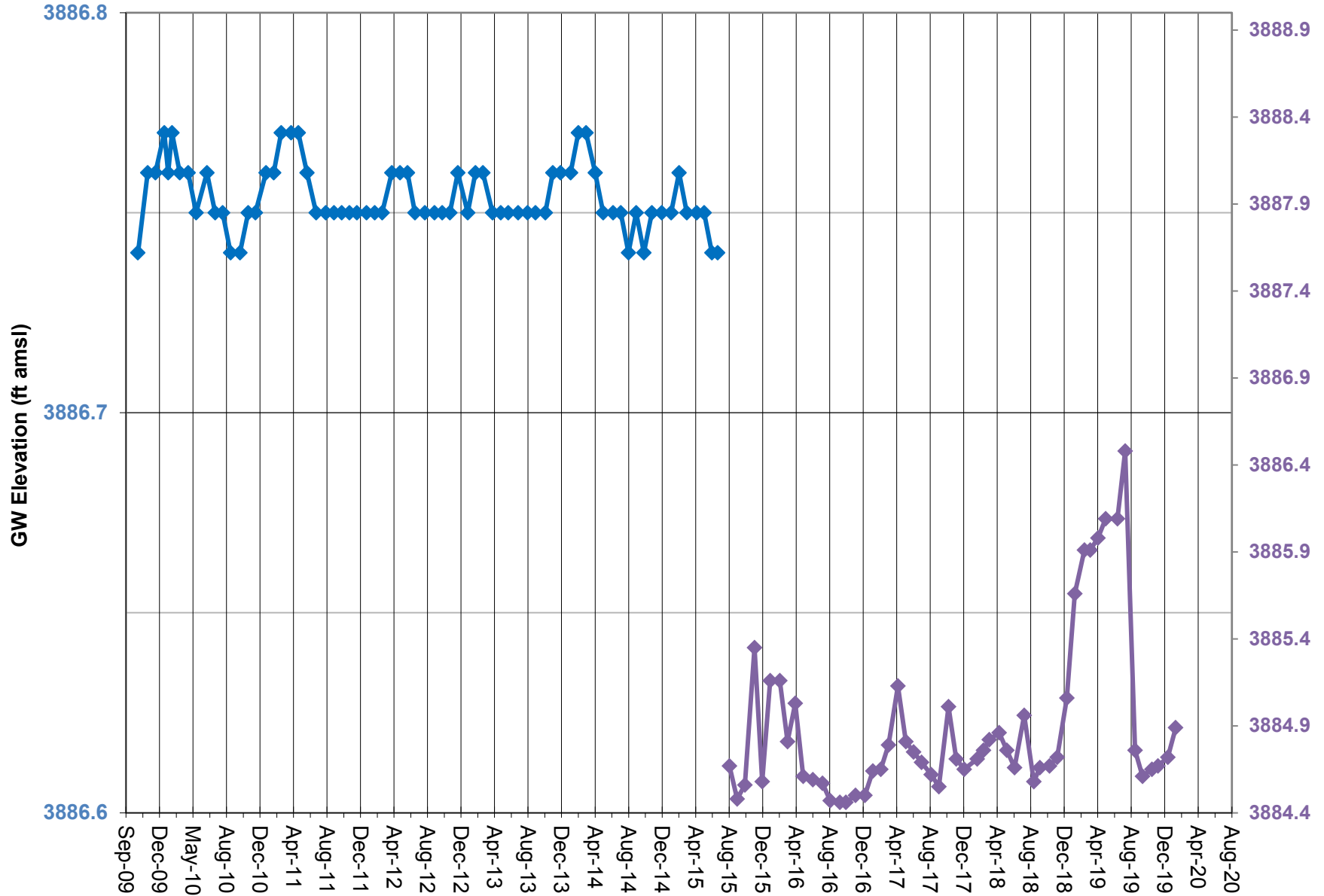
Note: Groundwater elevation data based on manual depth-to-water measurements.  
Well is adjacent to actively pumped domestic well.  
Coso Operating Co. initiated Hay Ranch Project pumping on 12/25/09.

## GROUNDWATER ELEVATION DATA - Long-Term (Manual) RV110 - Davis Ranch North Well



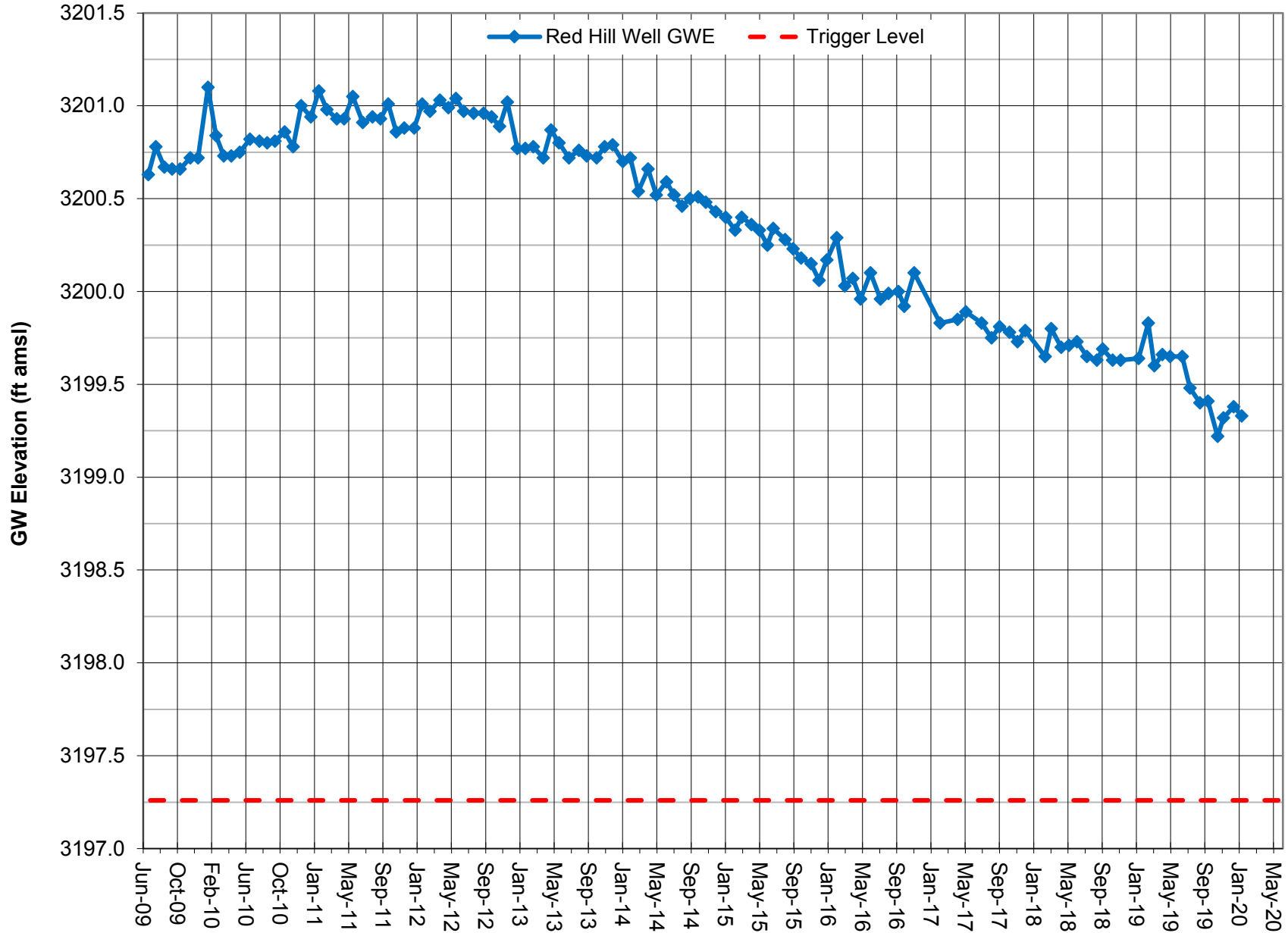
Note: Groundwater elevation data based on manual depth-to-water measurements.  
DTW measured to .01 foot; GWE calculated using approximate surface elevation.  
Coso Operating Co. initiated Hay Ranch Project pumping on 12/25/09.

## GROUNDWATER ELEVATION DATA - Long-Term (Manual) RV111 - Davis Ranch South Well



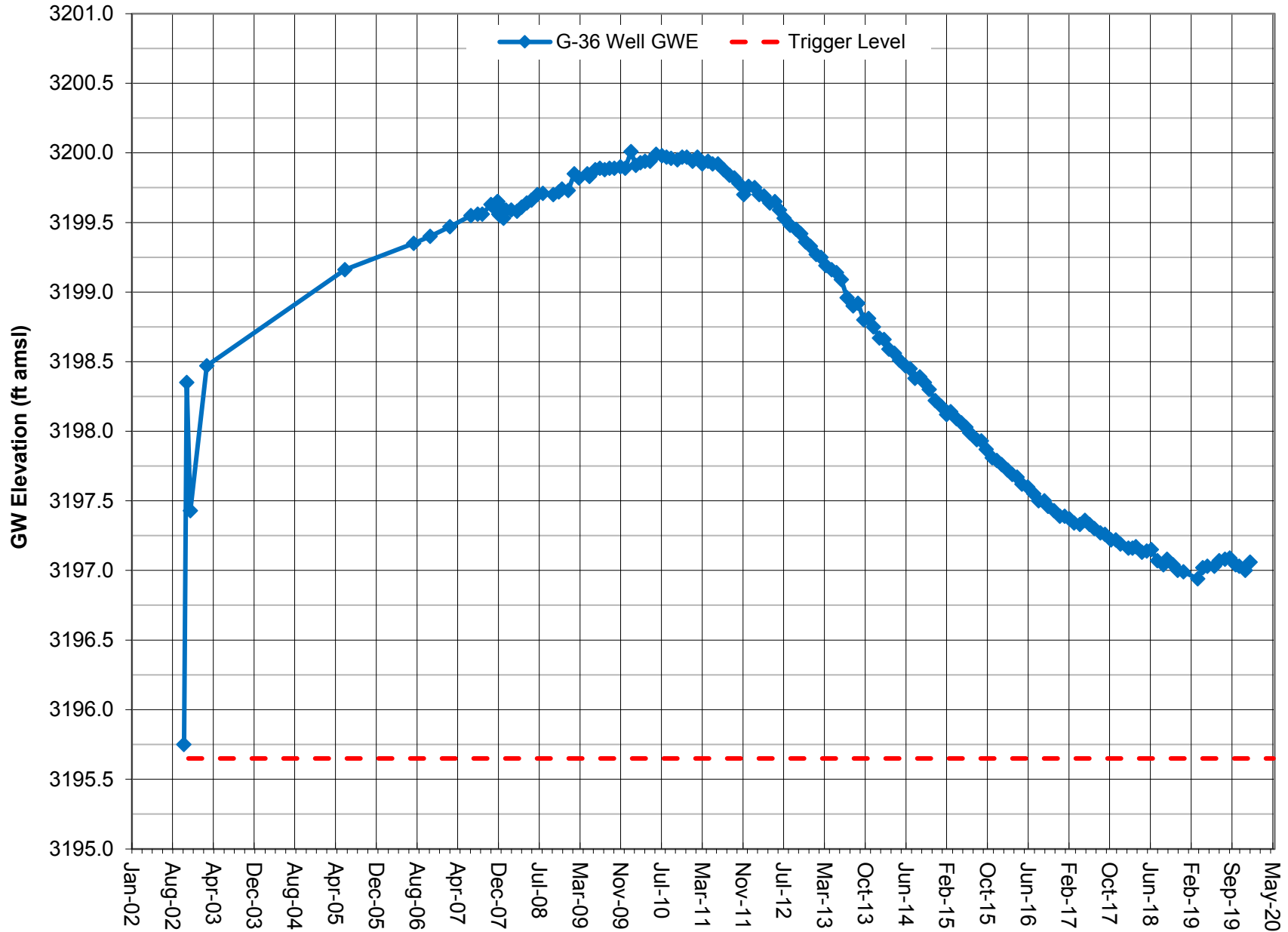
Note: Groundwater elevation data based on manual depth-to-water measurements.  
 Water-supply pump installed in DR South in July 2015.  
 Note secondary axis for GWEs post-pump installation.

## GROUNDWATER ELEVATION DATA - Long-Term (Manual) RV120 - Red Hill Well



Note: Groundwater elevation data based on manual depth-to-water measurements. Lines between data points are approximations.  
Coso Operating Co. initiated Hay Ranch Project pumping on 12/25/09.

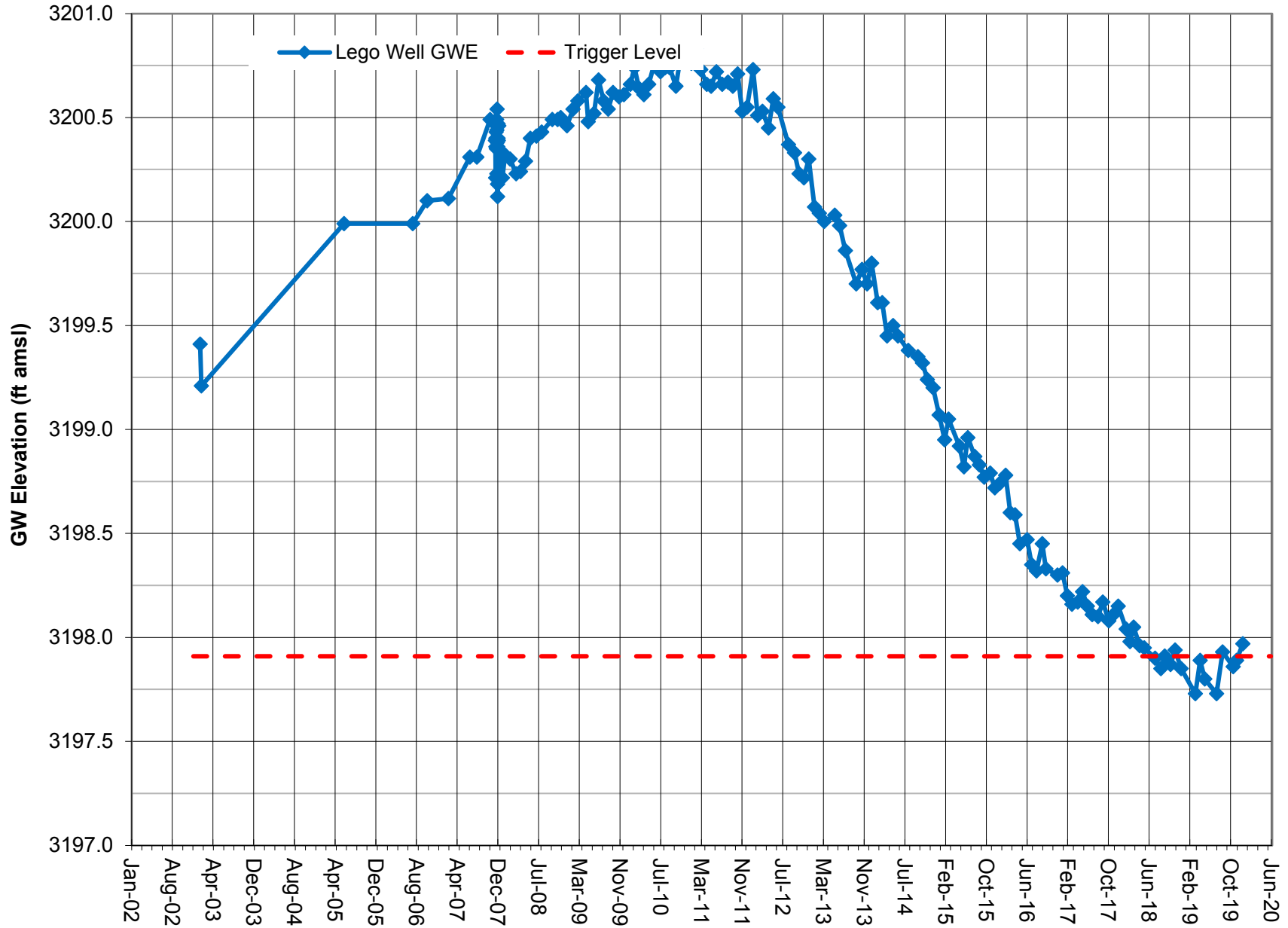
## GROUNDWATER ELEVATION DATA - Long-Term (Manual) RV130 - G-36 Well



Note: Groundwater elevation data based on manual depth-to-water measurements.  
 Coso Operating Co. conducted a pump test on the Hay Ranch South Well in fourth quarter 2007.  
 Coso Operating Co. initiated Hay Ranch Project pumping on 12/25/09.

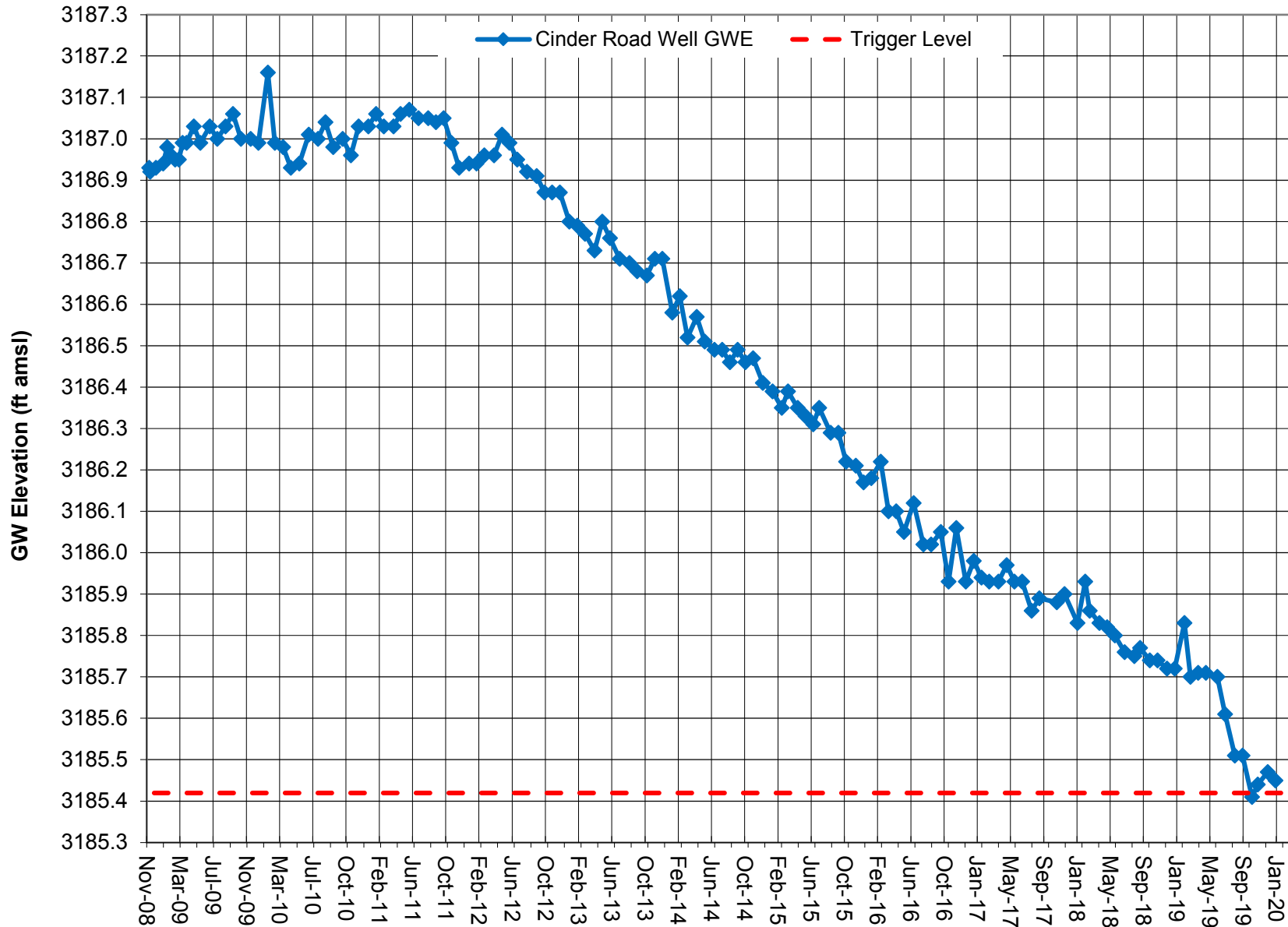


## GROUNDWATER ELEVATION DATA - Long-Term (Manual) RV140 - Lego Well



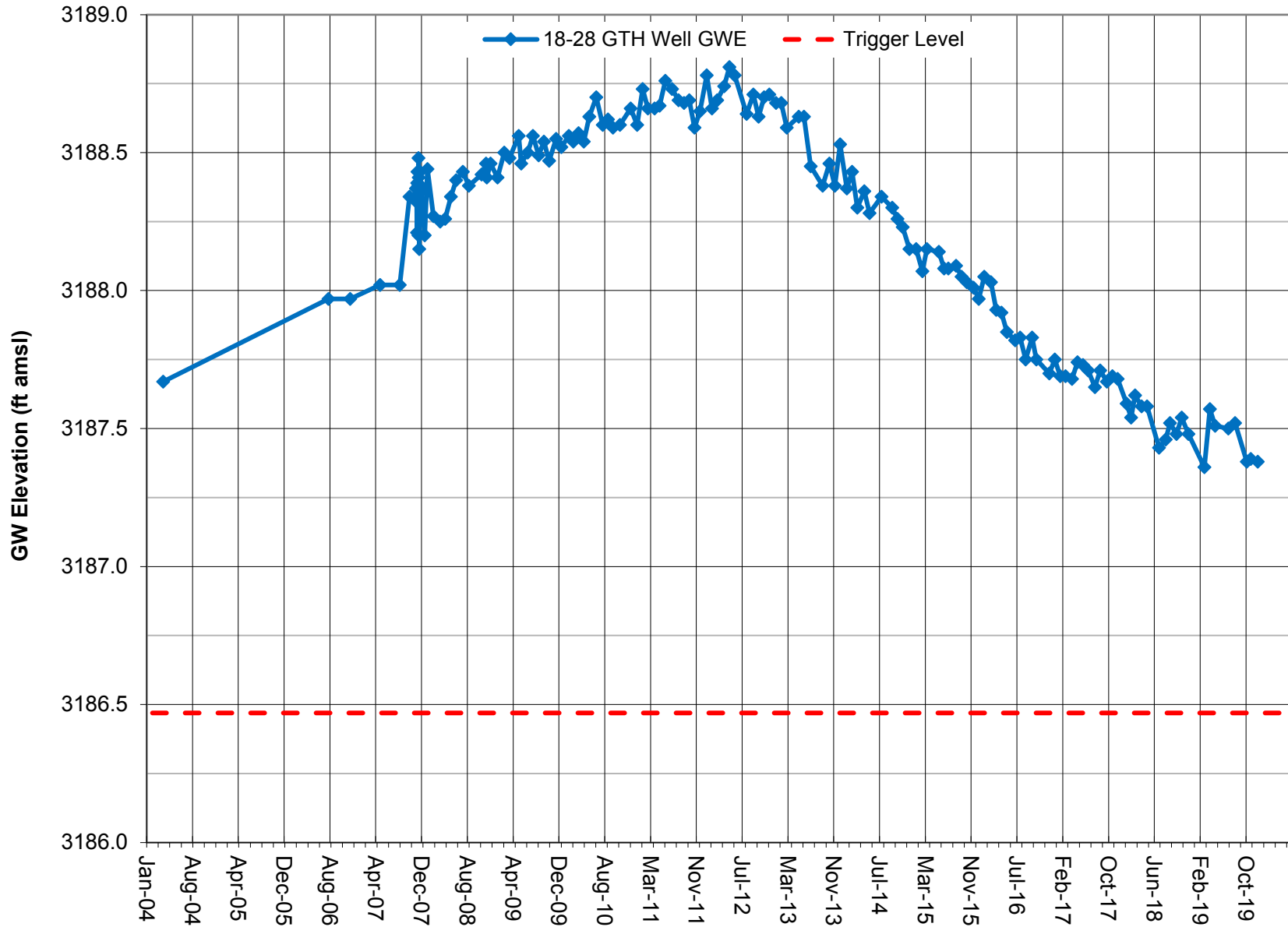
Note: Groundwater elevation data based on manual depth-to-water measurements.  
 Coso Operating Co. conducted a pump test on the Hay Ranch South Well in fourth quarter 2007.  
 Coso Operating Co. initiated Hay Ranch Project pumping on 12/25/09.

## GROUNDWATER ELEVATION DATA - Long-Term (Manual) RV150 - Cinder Road Well



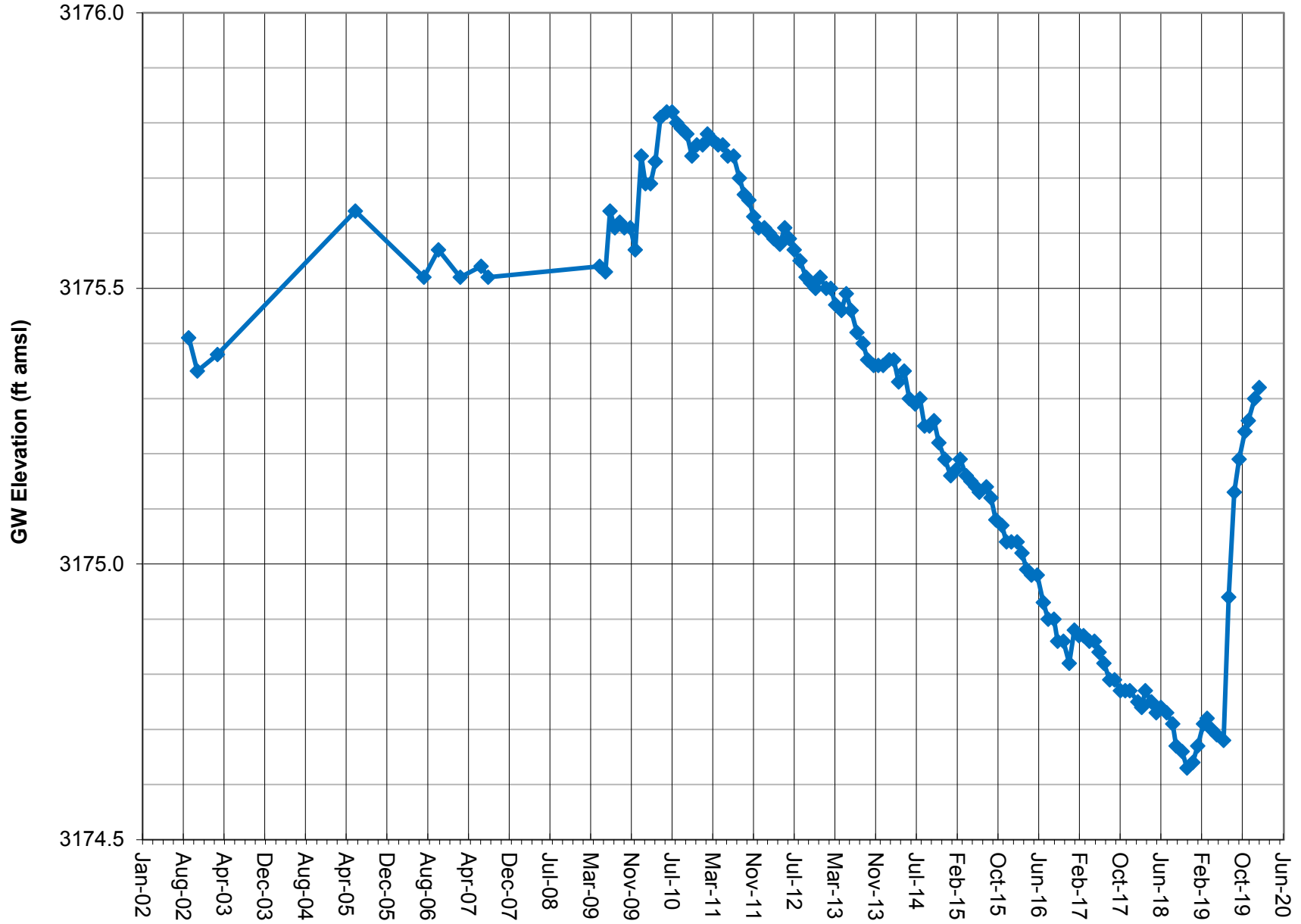
Note: GWE data based on manual depth-to-water measurements.  
COC initiated Hay Ranch Pumping on 12/25/09. Surveyed measuring point altered after October 2017.

## GROUNDWATER ELEVATION DATA - Long-Term (Manual) RV160 - 18-28 GTH Well



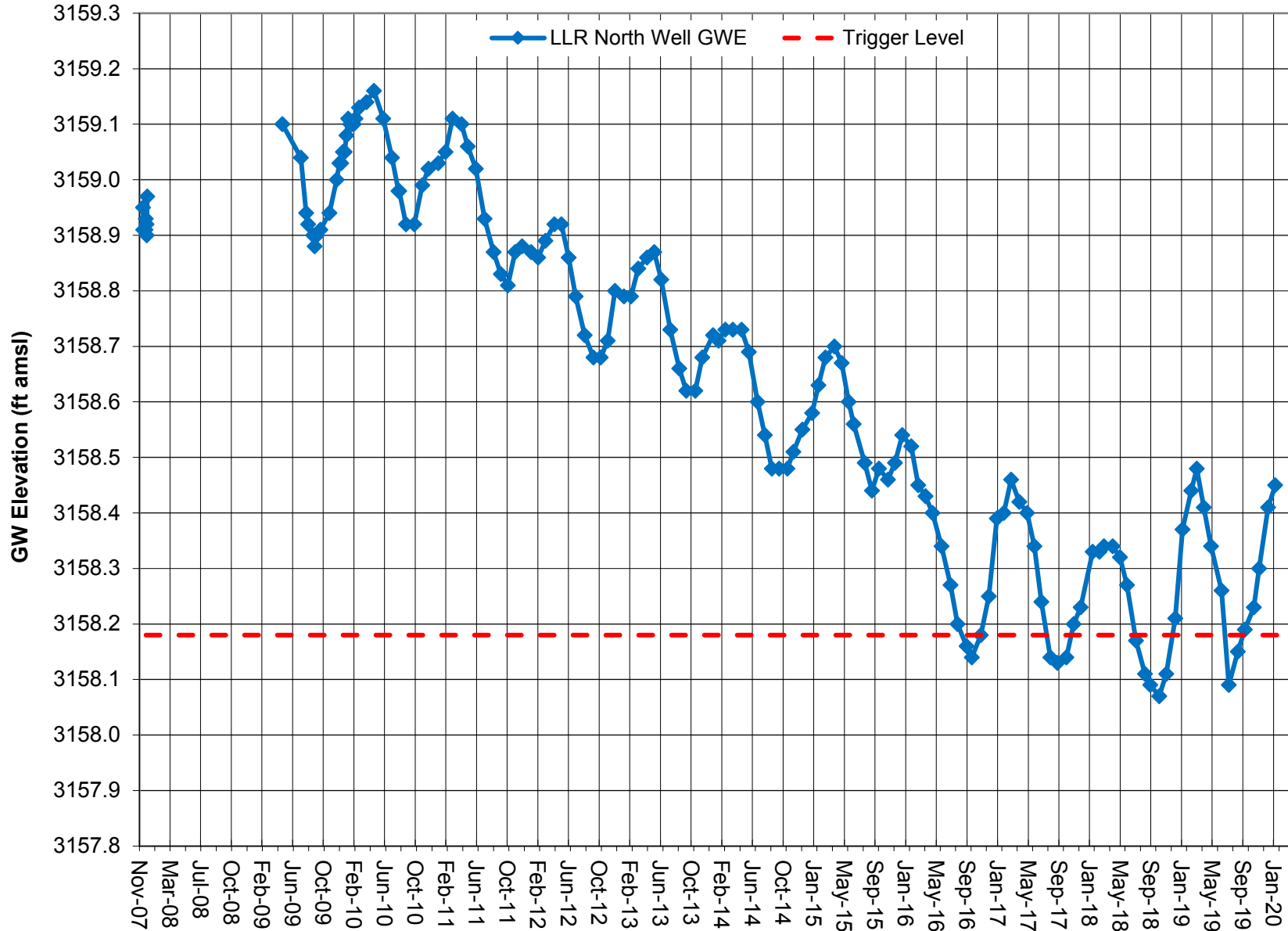
Note: Groundwater elevation data based on manual depth-to-water measurements.  
 Coso Operating Co. conducted a pump test on the Hay Ranch South Well in fourth quarter 2007.  
 Coso Operating Co. initiated Hay Ranch Project pumping on 12/25/09.

## GROUNDWATER ELEVATION DATA - Long-Term (Manual) RV170 - Fossil Falls Well



Note: Groundwater elevation data based on manual depth-to-water measurements.  
Coso Operating Co. initiated Hay Ranch Project pumping on 12/25/09.

## GROUNDWATER ELEVATION DATA - Long-Term (Manual) RV180 - Little Lake Ranch North Well

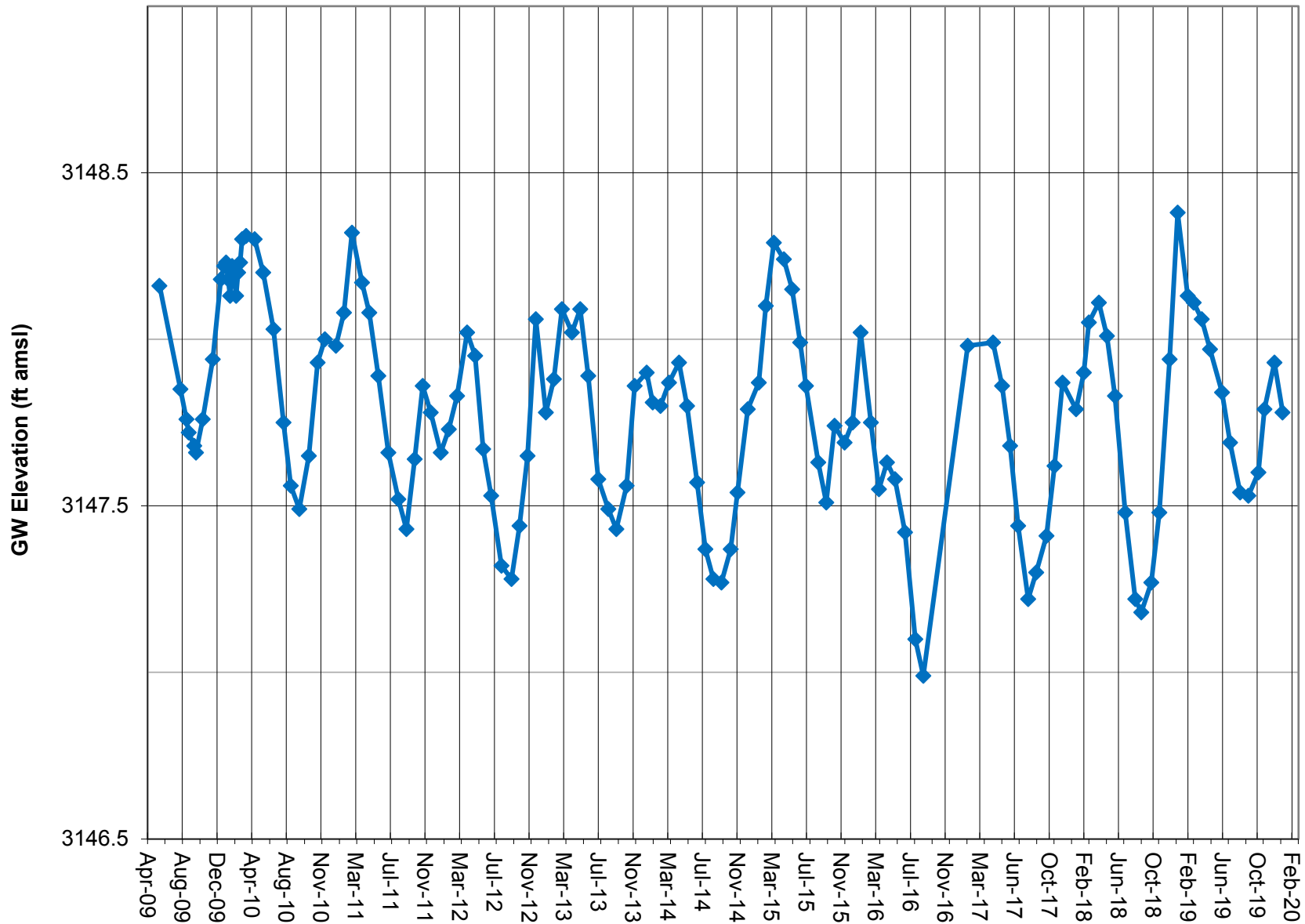


Note: Groundwater elevation data based on manual depth-to-water measurements.  
Coso Operating Co. initiated Hay Ranch Project pumping on 12/25/09.

**TEAM**  
ENGINEERING & MANAGEMENT, INC.  
Bishop and Mammoth Lakes, California

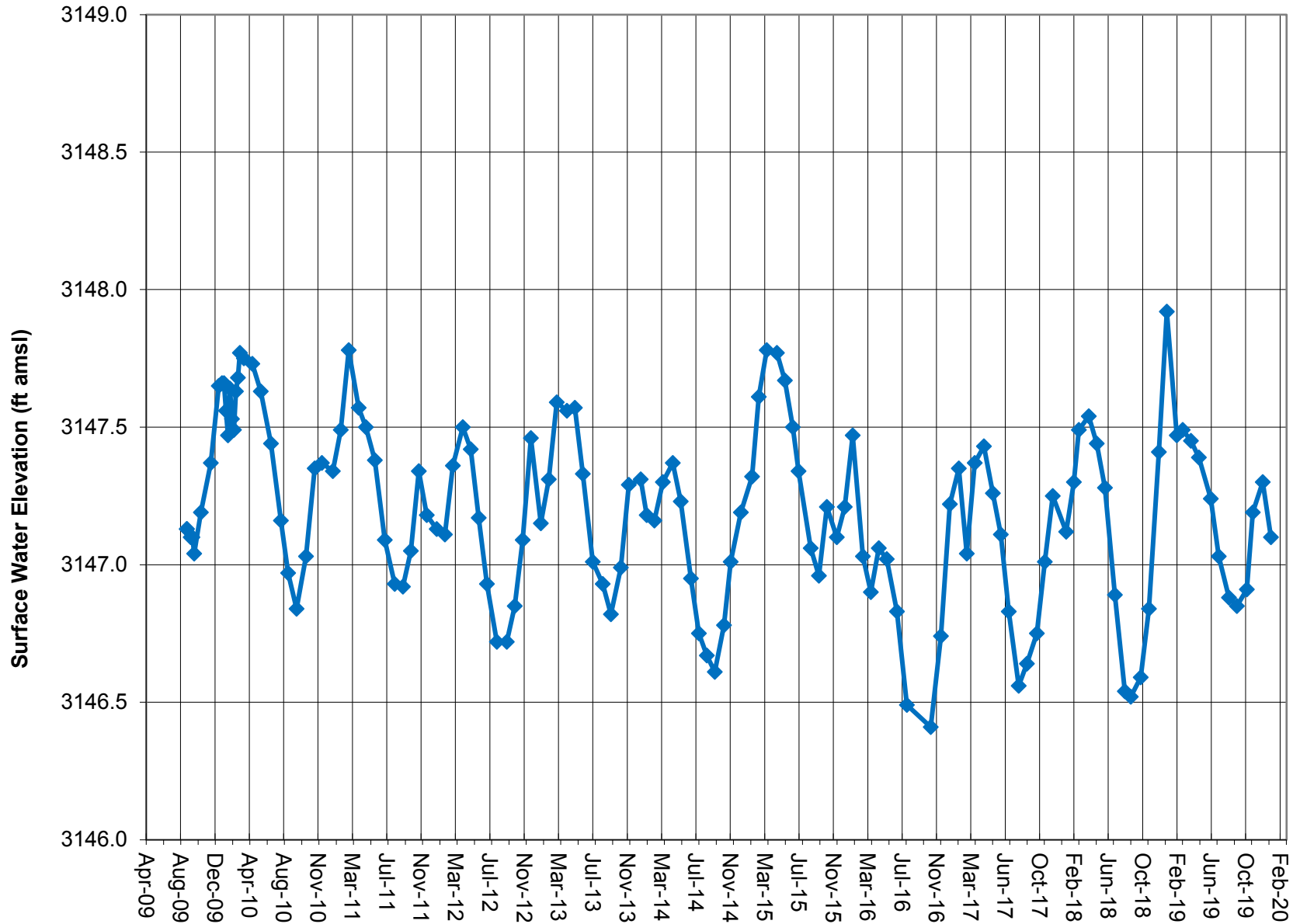
1/30/2020

## GROUNDWATER ELEVATION DATA - Long-Term (Manual) RV210 - Little Lake Ranch Dock Well



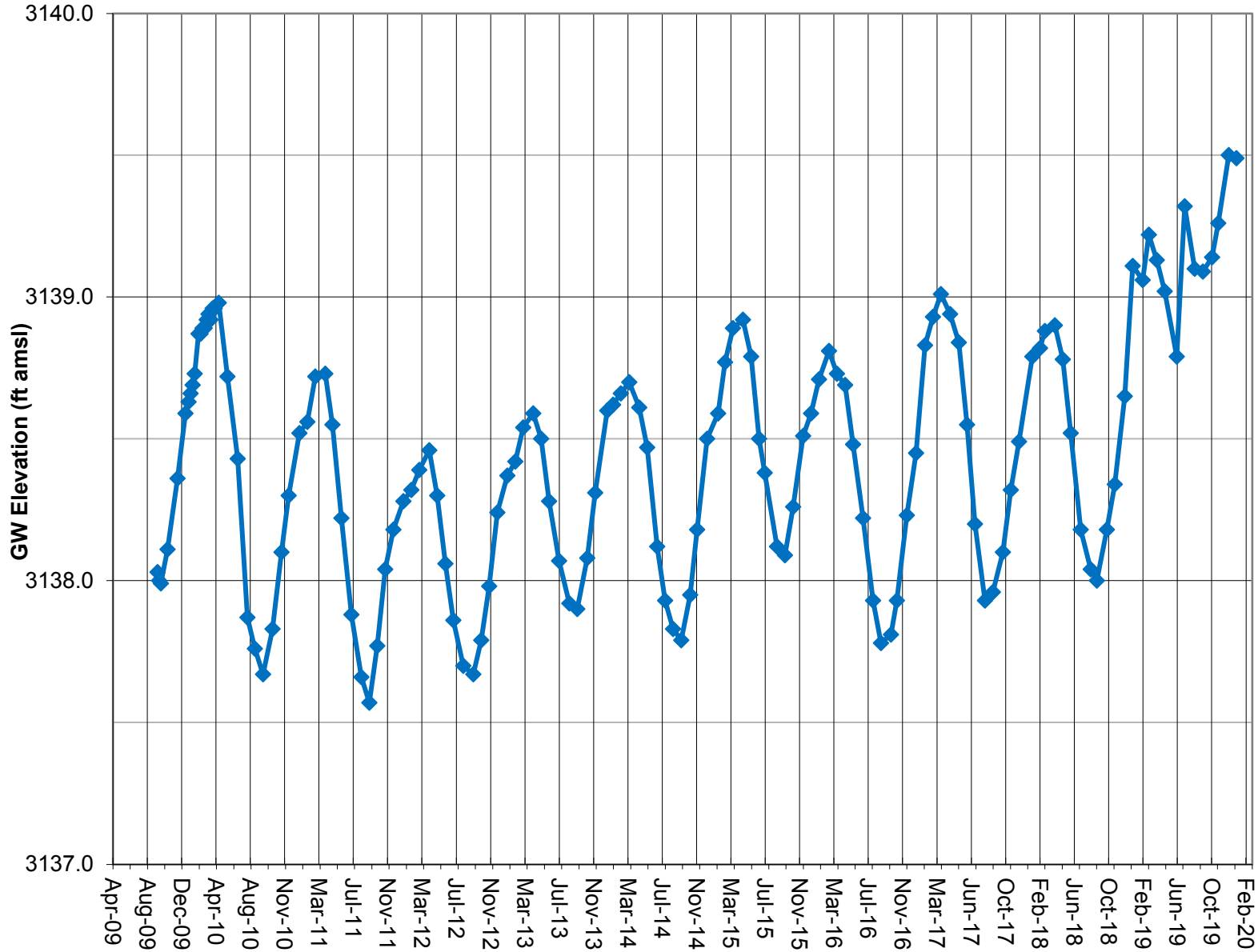
Note: GWE data based on manual depth-to-water measurements. Lines between data points are approximations.  
COC initiated Hay Ranch Project pumping on 12/25/09. Surveyed measuring point altered after Jan. 2017.

**SURFACE WATER ELEVATION DATA - Long-Term (Manual)  
RV220 - LLR Stilling Well (lake surface)**



Note: Surface water elevation data based on manual depth-to-water measurements. Lines between data points are approximations. August and September 2016 measurements not graphed due to low lake levels.

## GROUNDWATER ELEVATION DATA - Long-Term (Manual) RV260 - Little Lake Ranch Hotel Well



Note: Groundwater elevation data based on manual depth-to-water measurements. Lines between data points are approximations.  
Cosco Operating Co. initiated Hay Ranch Project pumping on 12/25/09.