

BGP088 (W/C): W | Type: B | Nevada Saltbush Scrub
Mollisols Shondow | ESD: Saline Meadow
Geomorphic: stream terraces

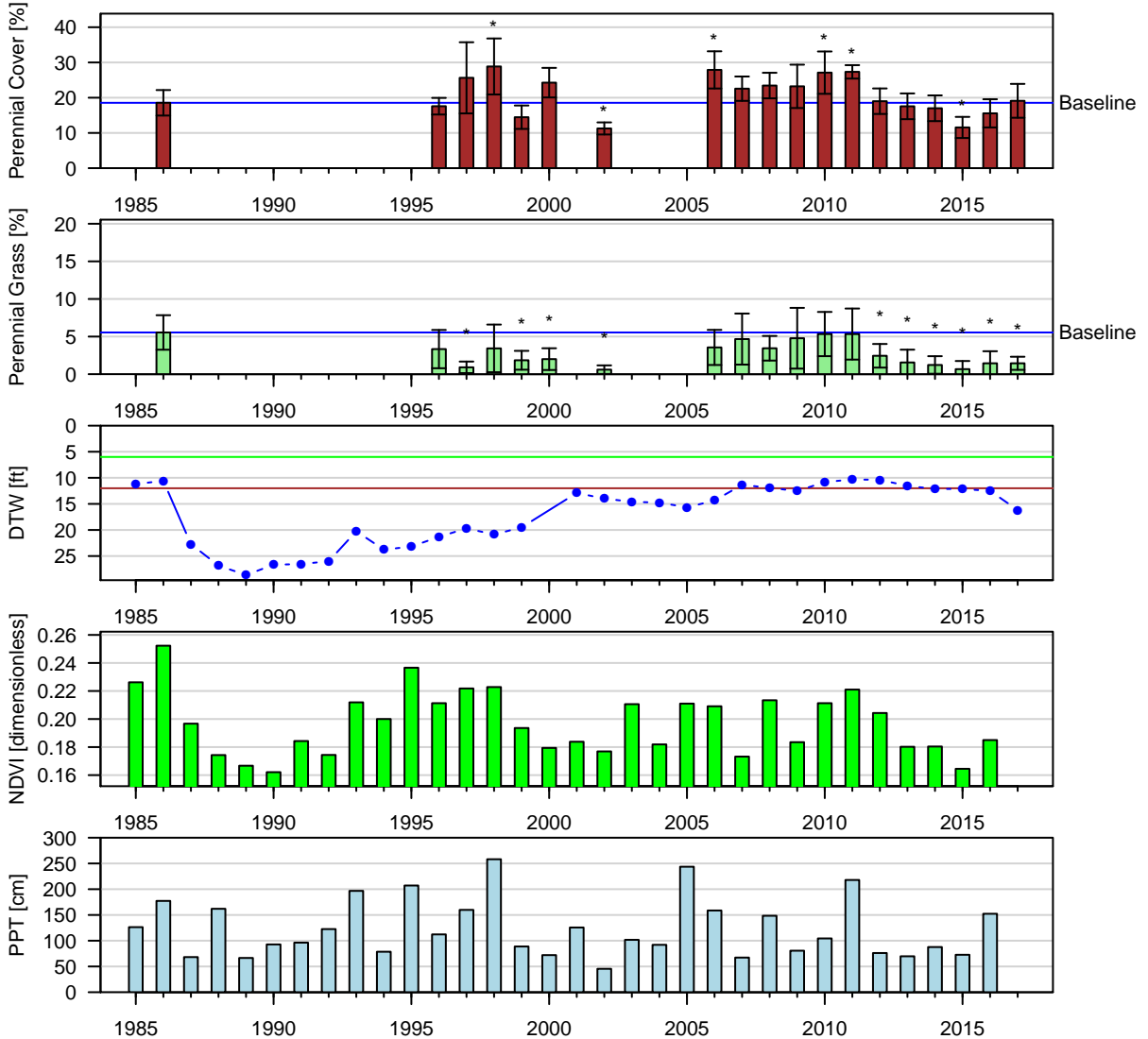


Figure 1: Two-Sample t-Test: Baseline (lpt) vs. reinventory (* $p < 0.05$).

Baseline sample size ($n = 11$). Current year sample size ($n = 9$). Error bars = 95% CI.

BGP162 (W/C): W | Type: B | Nevada Saltbush Scrub
 Entisols Hesperia | ESD: Loamy 5–8" P.Z.
 Geomorphic: alluvial fans

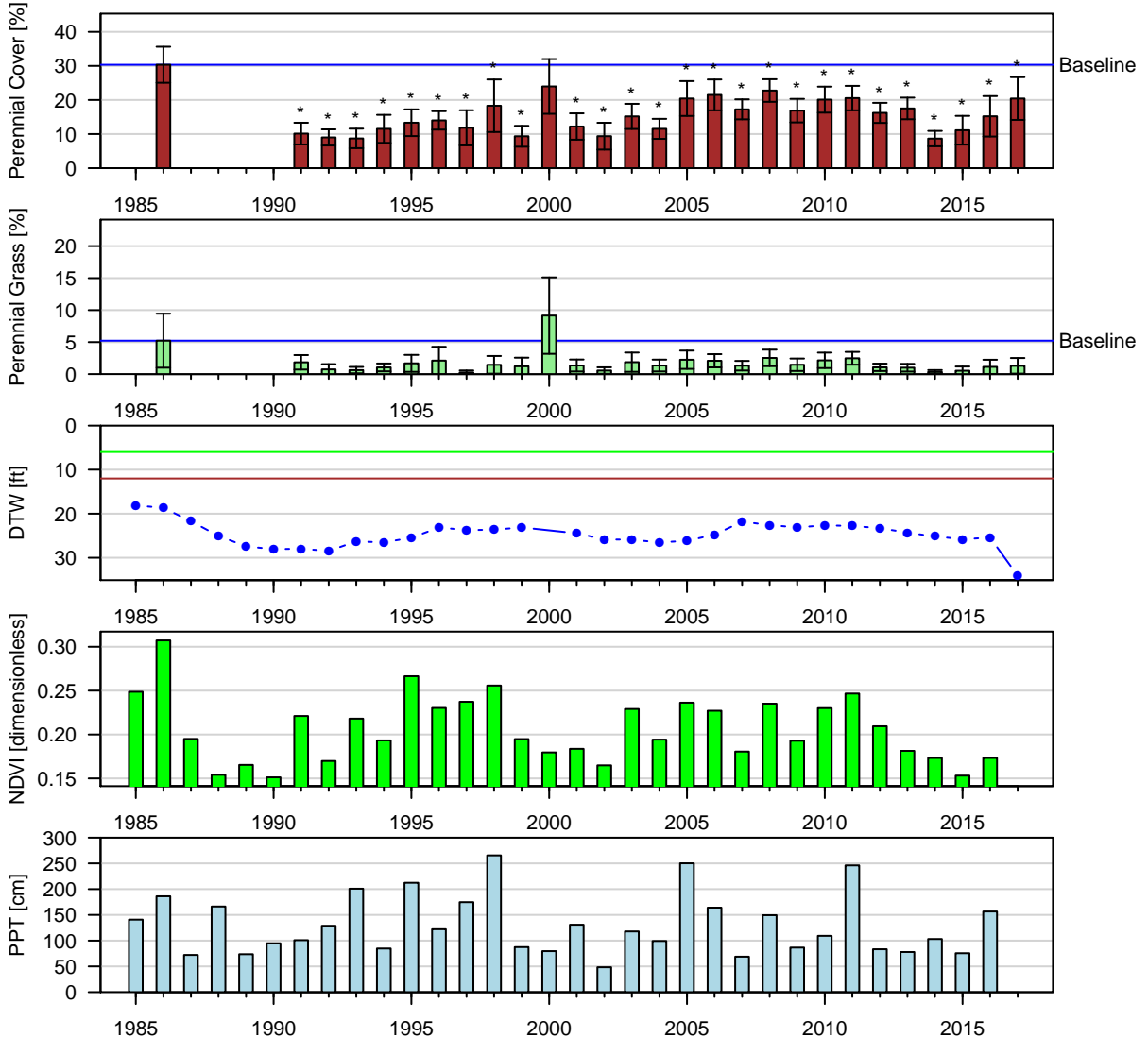


Figure 2: Two-Sample t-Test: Baseline (lpt) vs. reinventory (* $p < 0.05$).
 Baseline sample size ($n = 9$). Current year sample size ($n = 17$). Error bars = 95% CI.

BLK094 (W/C): W | Type: C | Alkali Meadow
 Aridisols Winerton | ESD: Saline Bottom
 Geomorphic: stream terraces

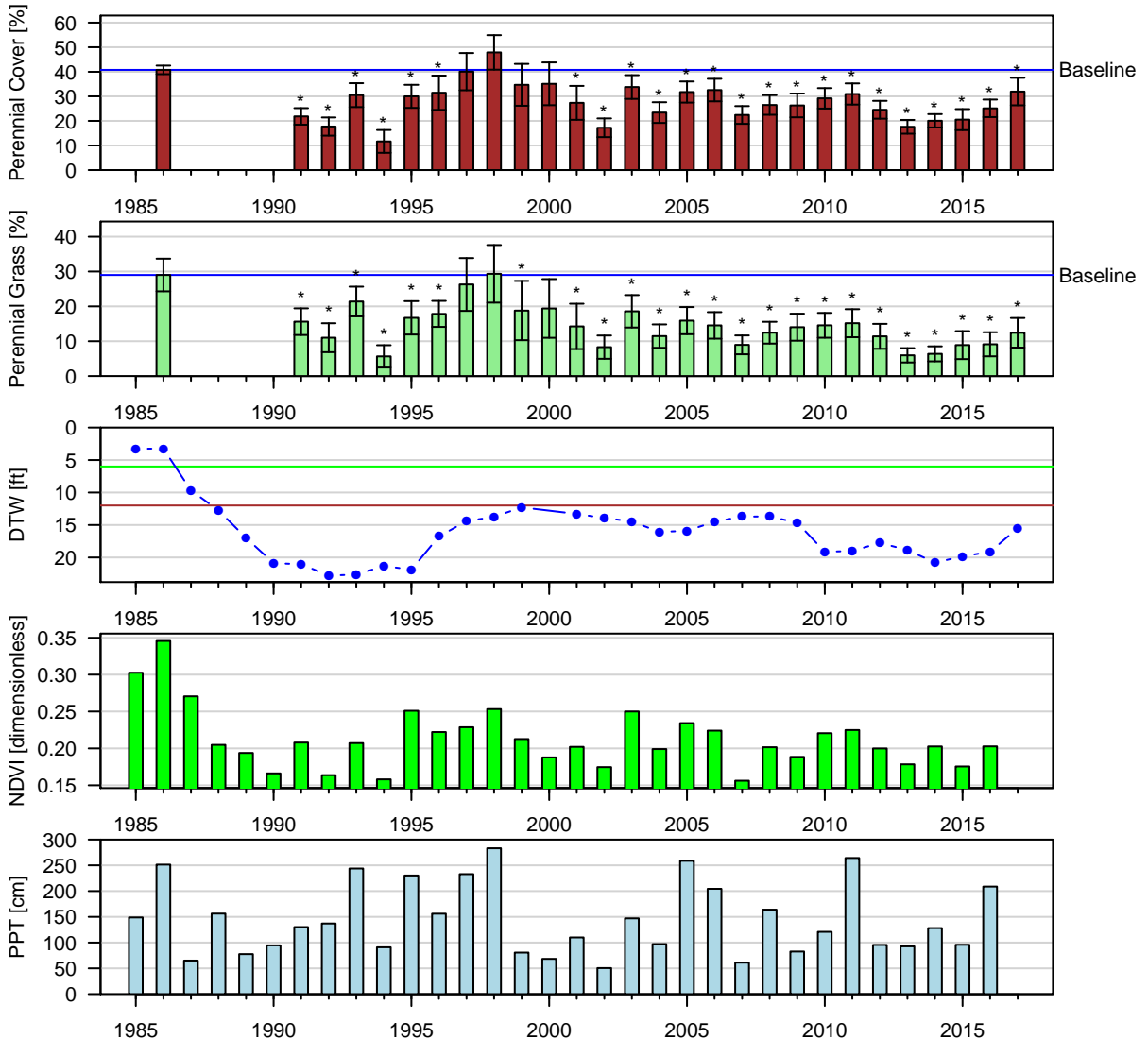


Figure 3: Two-Sample t-Test: Baseline (lpt) vs. reinventory (* $p < 0.05$).

Baseline sample size ($n = 9$). Current year sample size ($n = 17$). Error bars = 95% CI.

FSL044 (W/C): W | Type: C | Alkali Meadow
 Aridisols Numu | ESD: Saline Bottom
 Geomorphic: stream terraces

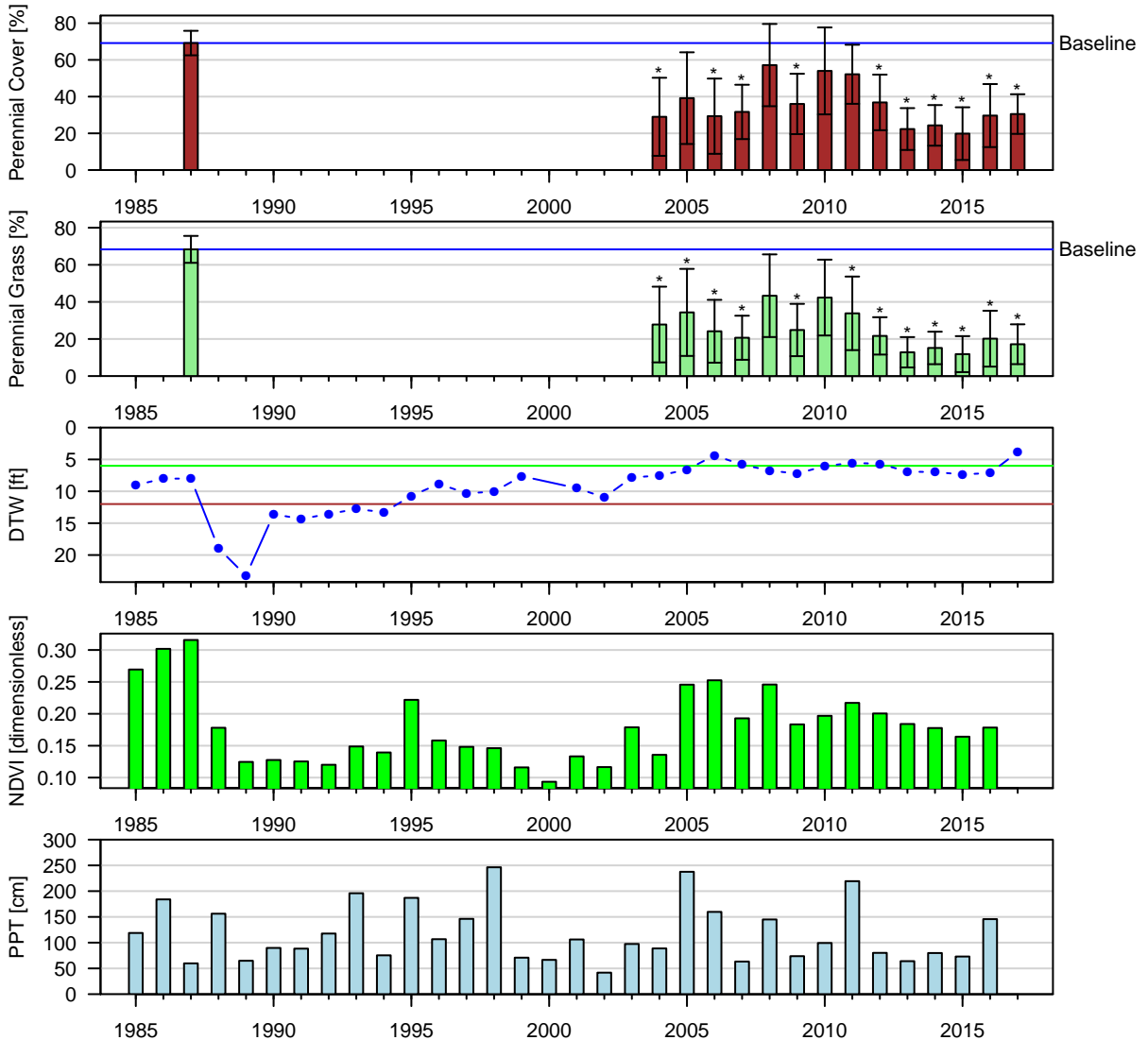


Figure 4: Two-Sample t-Test: Baseline (lpt) vs. reinventory (* $p < 0.05$).

Baseline sample size ($n = 6$). Current year sample size ($n = 6$). Error bars = 95% CI.

FSL054 (W/C): W | Type: D | Modoc-Gr.Basin Riparian Scrub
 Mollisols Fluvaquentic Endoaquolls | ESD: Moist Floodplain
 Geomorphic: depressions

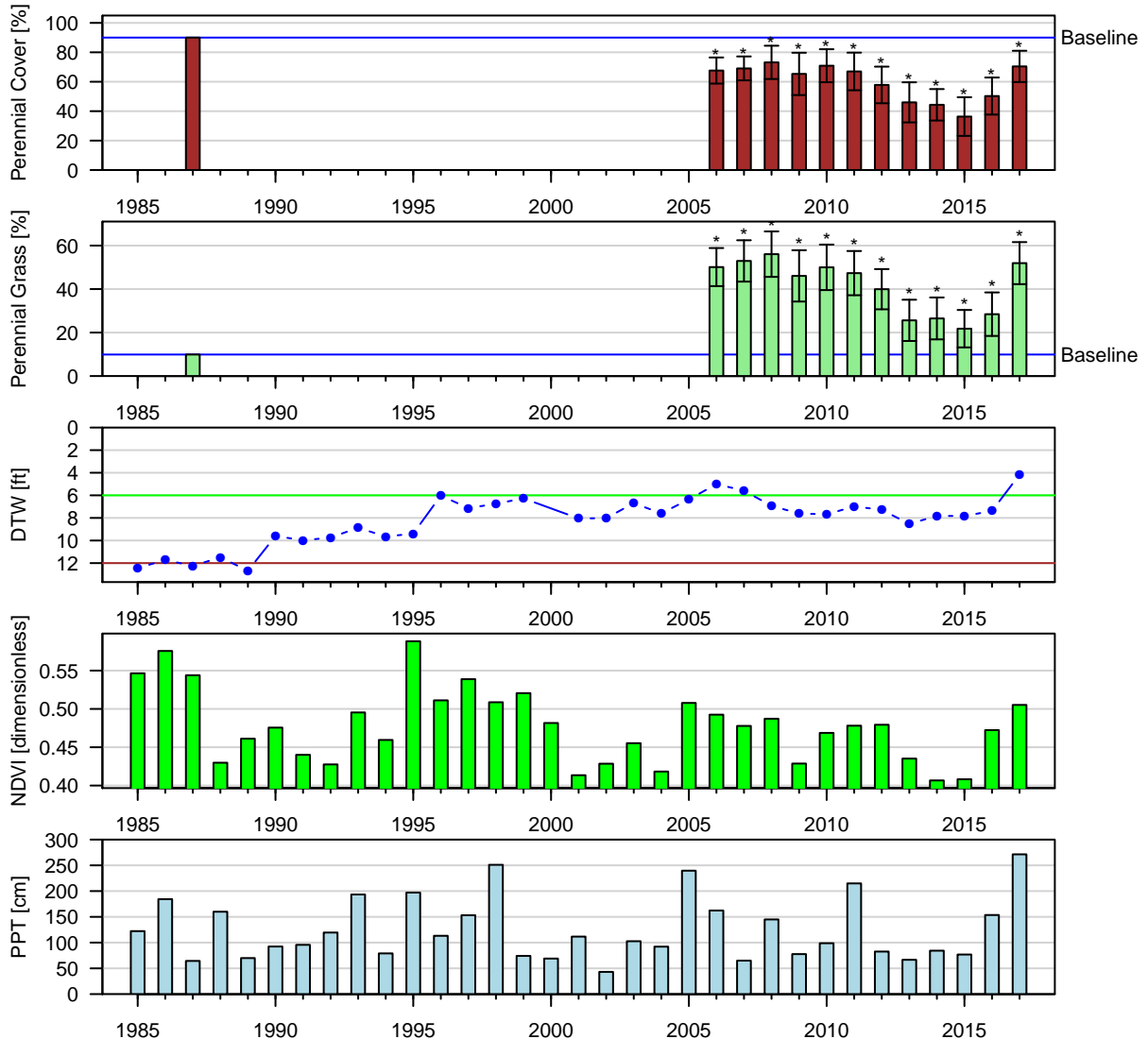


Figure 5: One-Sample t-Test: Baseline (wvcom) vs. reinventory (* $p < 0.05$).
 Baseline sample size ($n = 1$). Current year sample size ($n = 14$). Error bars = 95% CI.

FSP020 (W/C): W | Type: B | Nevada Saltbush Scrub
 Aridisols Hessica | ESD: Saline Bottom
 Geomorphic: stream terraces

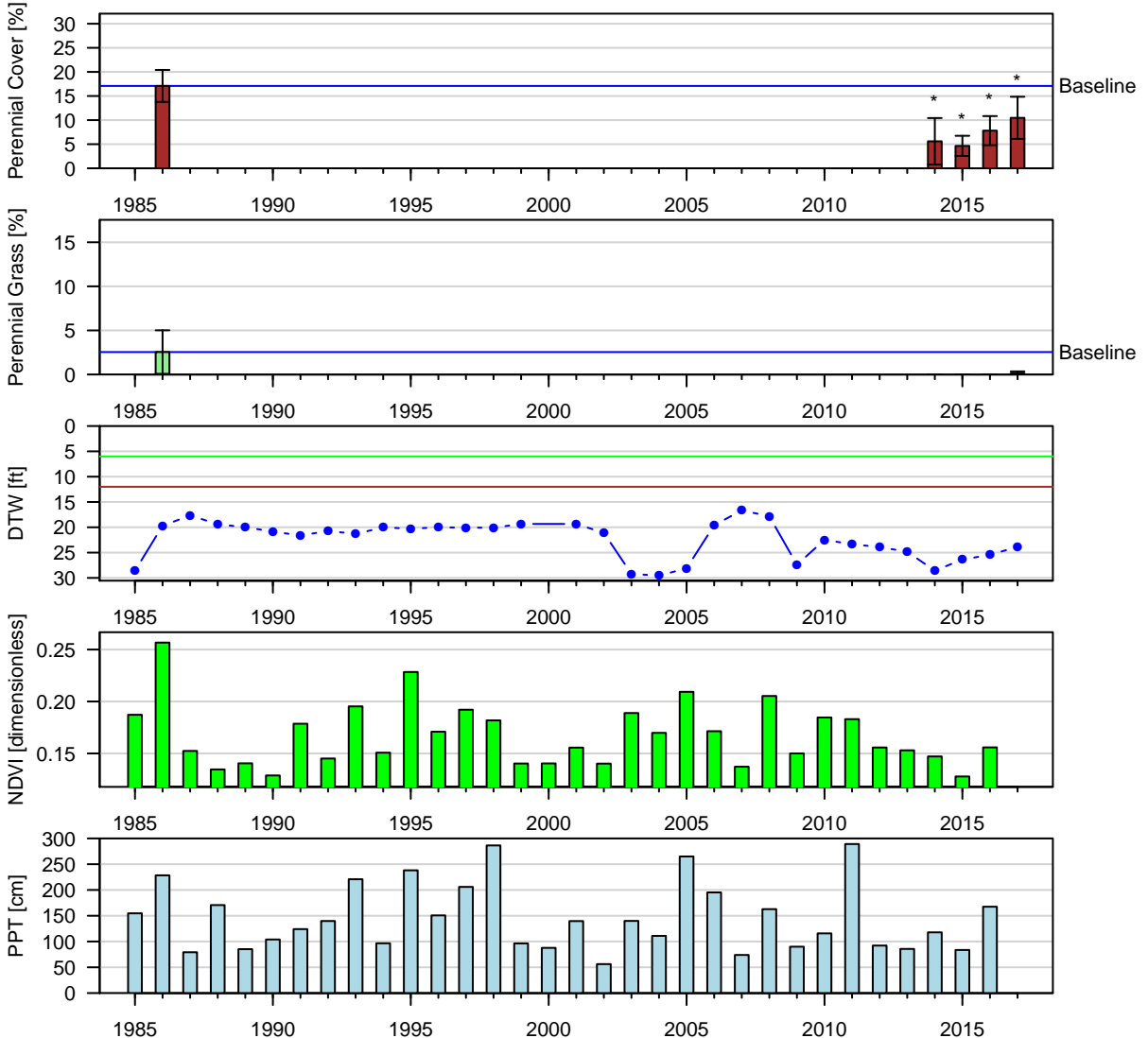


Figure 6: Two-Sample t-Test: Baseline (lpt) vs. reinventory (* $p < 0.05$).
 Baseline sample size ($n = 11$). Current year sample size ($n = 17$). Error bars = 95% CI.

IND019 (W/C): W | Type: C | Alkali Meadow
 Mollisols Shonadow | ESD: Saline Meadow
 Geomorphic: stream terraces

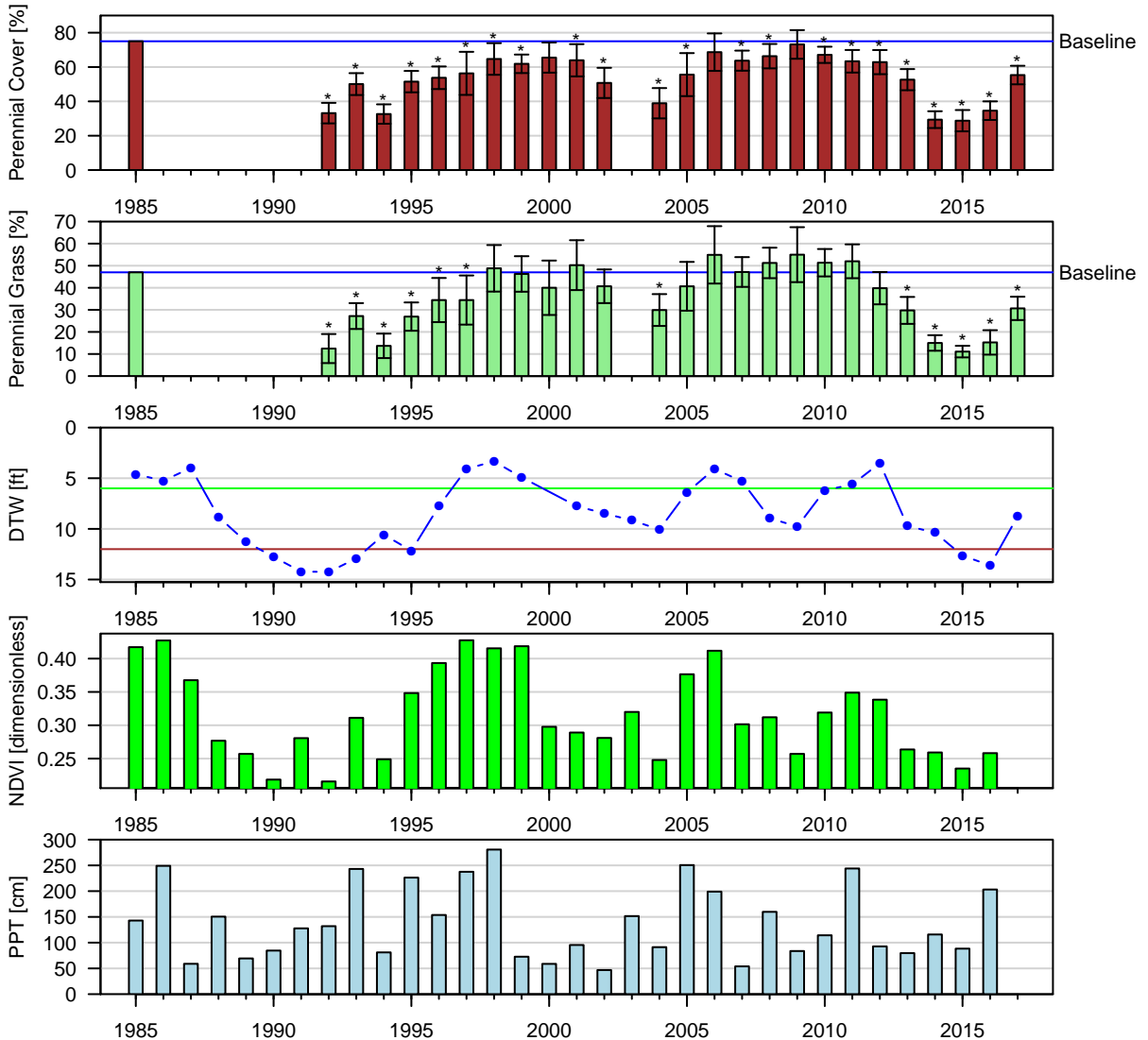


Figure 7: One-Sample t-Test: Baseline (1pt) vs. reinventory (* $p < 0.05$).

Baseline sample size ($n = 1$). Current year sample size ($n = 12$). Error bars = 95% CI.

IND021 (W/C): W | Type: C | Rabbitbrush Meadow
Mollisols Dehy | ESD: Saline Meadow
Geomorphic: alluvial fans, stream terraces

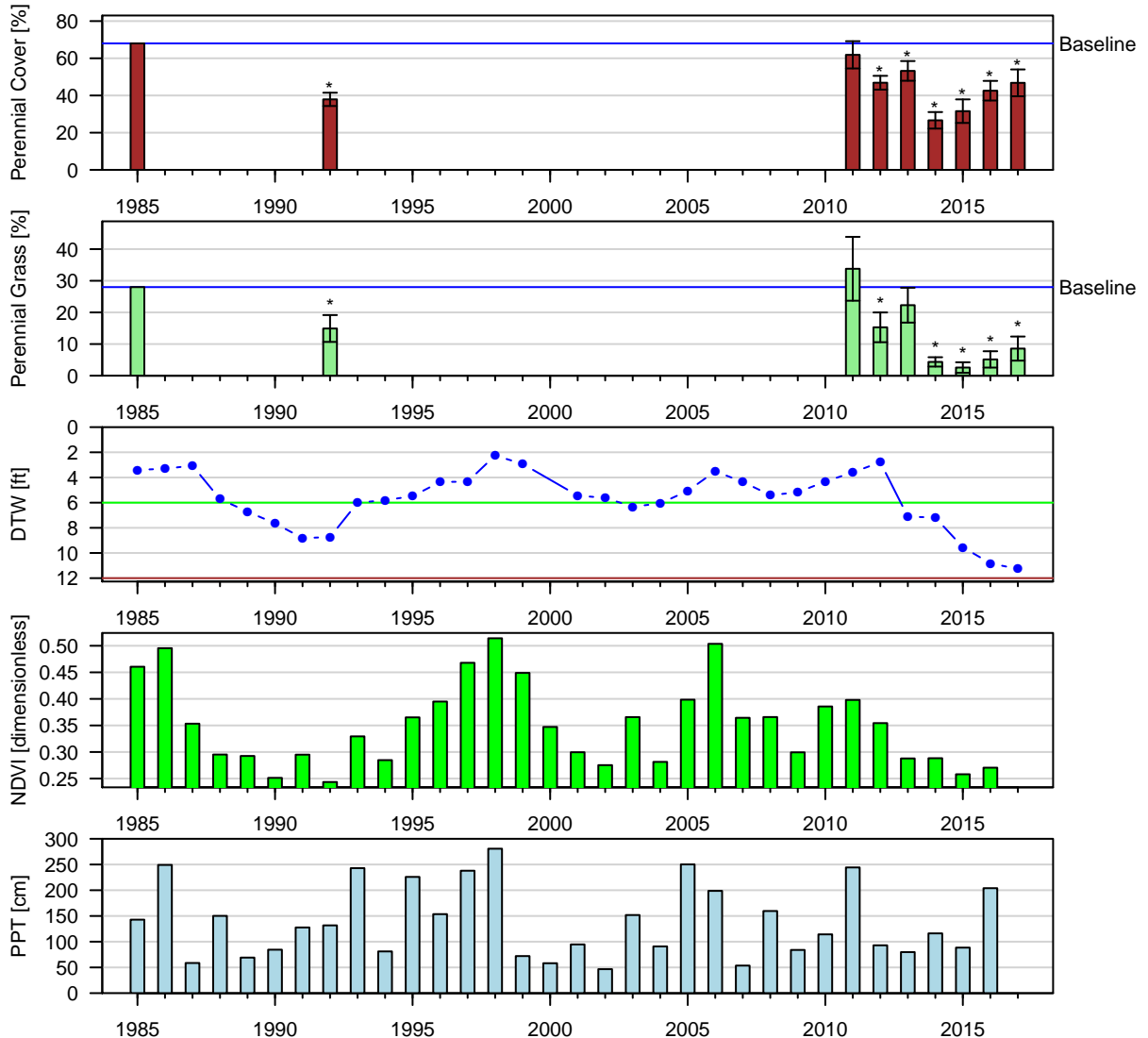


Figure 8: One-Sample t-Test: Baseline (1pt) vs. reinventory (* p < 0.05).

Baseline sample size (n = 1). Current year sample size (n = 14). Error bars = 95% CI.

IND026 (W/C): W | Type: C | Alkali Meadow
 Histosols Rindge family | ESD: Wetland
 Geomorphic: fan terraces, stream terraces

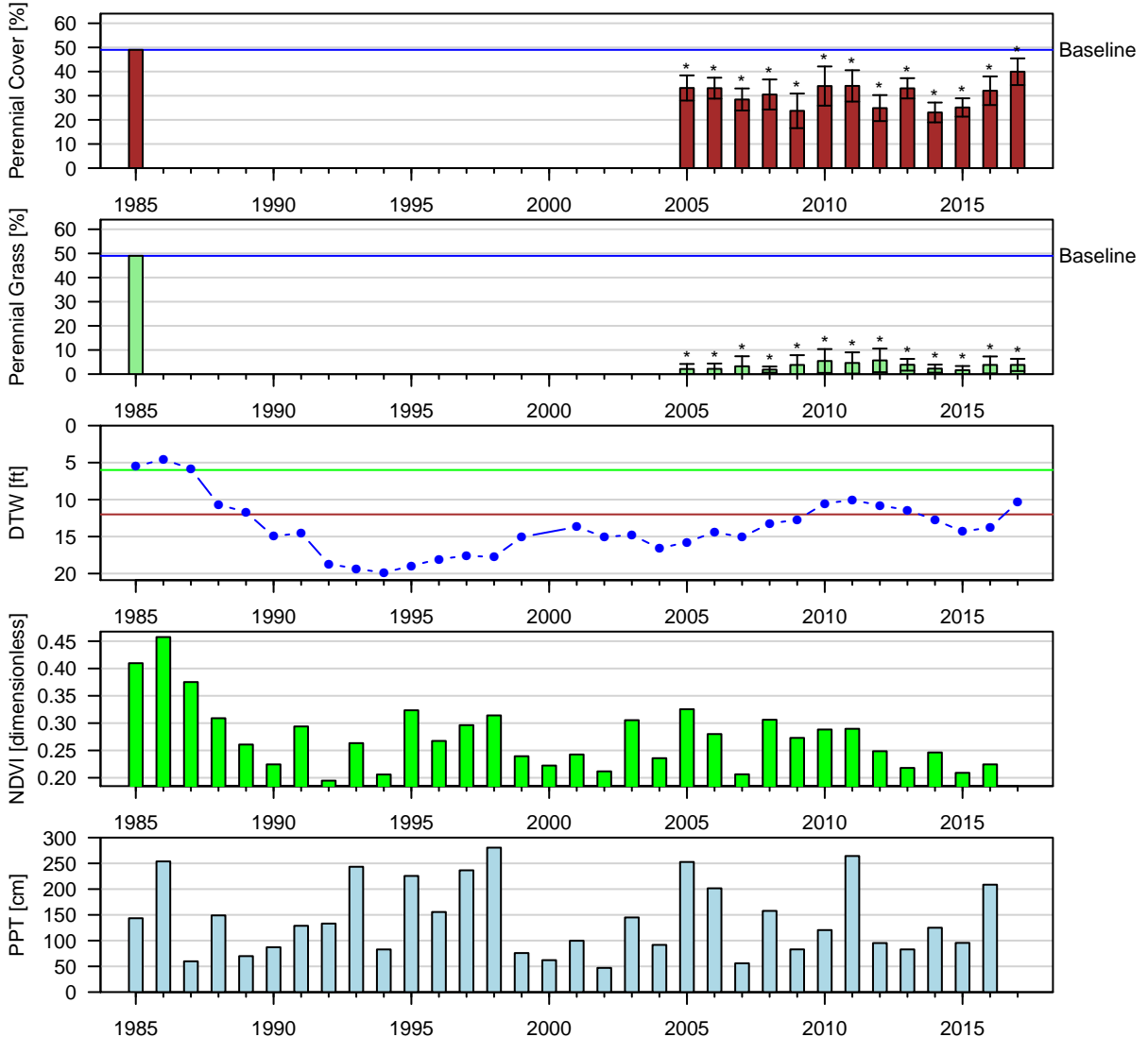


Figure 9: One-Sample t-Test: Baseline (1pt) vs. reinventory (* p < 0.05).

Baseline sample size (n = 1). Current year sample size (n = 16). Error bars = 95% CI.

LAW035 (W/C): W | Type: C | Alkali Meadow
 Entisols Sabies | ESD: Sodic Terrace
 Geomorphic: stream terraces

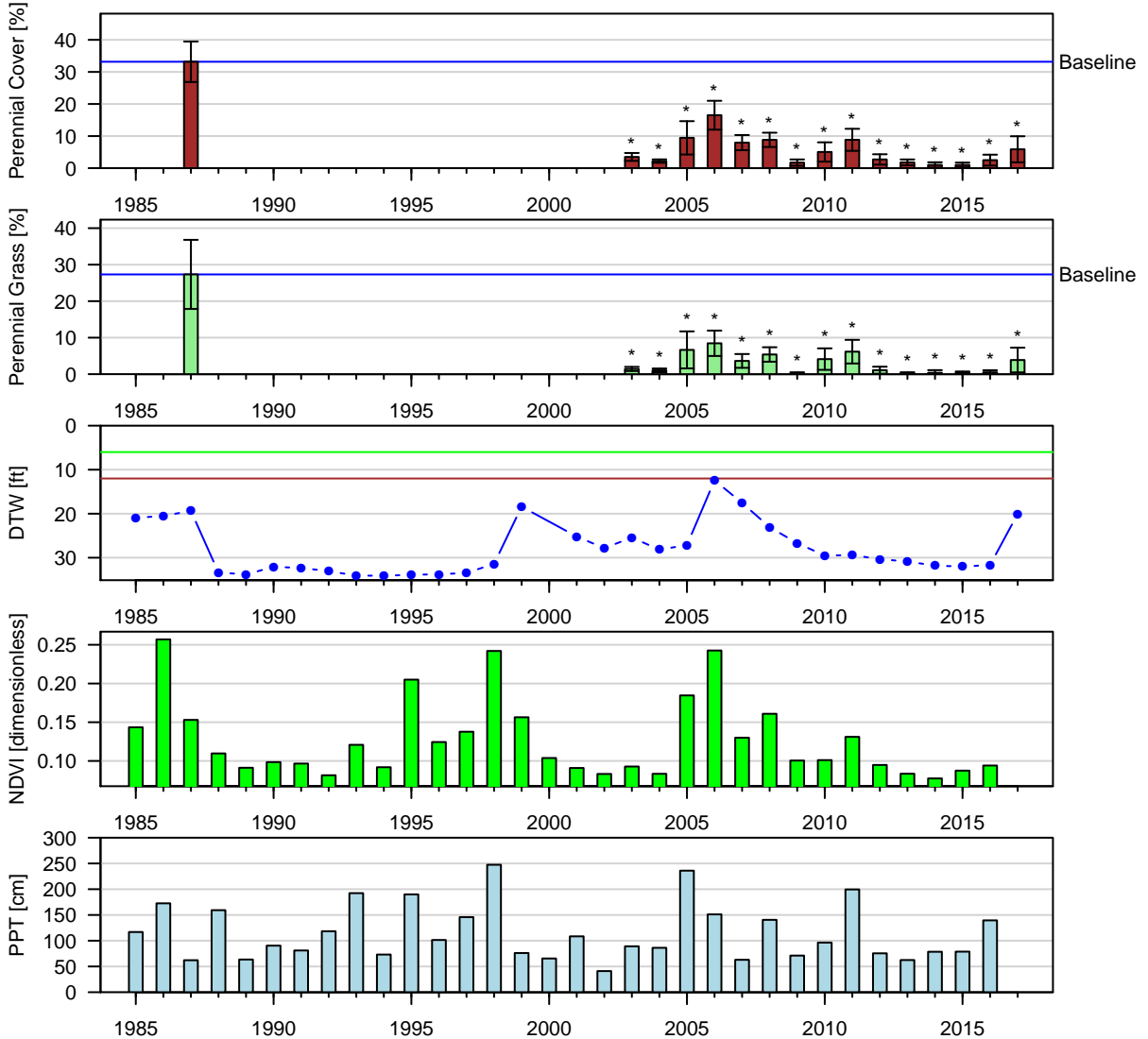


Figure 10: Two-Sample t-Test: Baseline (lpt) vs. reinventory (* $p < 0.05$).

Baseline sample size ($n = 6$). Current year sample size ($n = 8$). Error bars = 95% CI.

LAW043 (W/C): W | Type: E | Rush/Sedge Meadow
 Entisols Sabies | ESD: Sodic Terrace
 Geomorphic: stream terraces

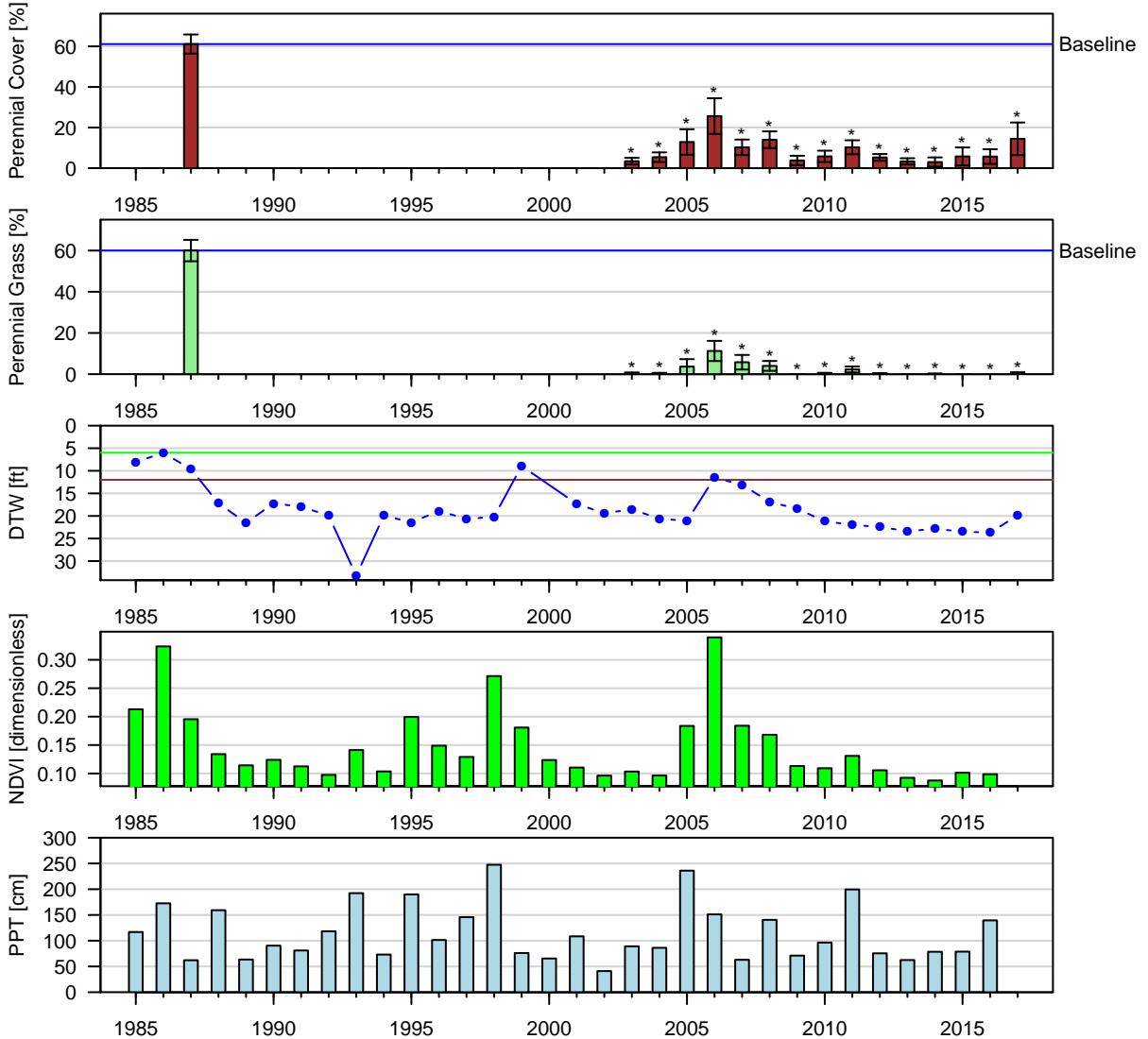


Figure 11: Two-Sample t-Test: Baseline (lpt) vs. reinventory (* $p < 0.05$).

Baseline sample size ($n = 8$). Current year sample size ($n = 9$). Error bars = 95% CI.

LAW052 (W/C): W | Type: C | Alkali Meadow
 Entisols Yaney | ESD: Sodic Terrace
 Geomorphic: stream terraces

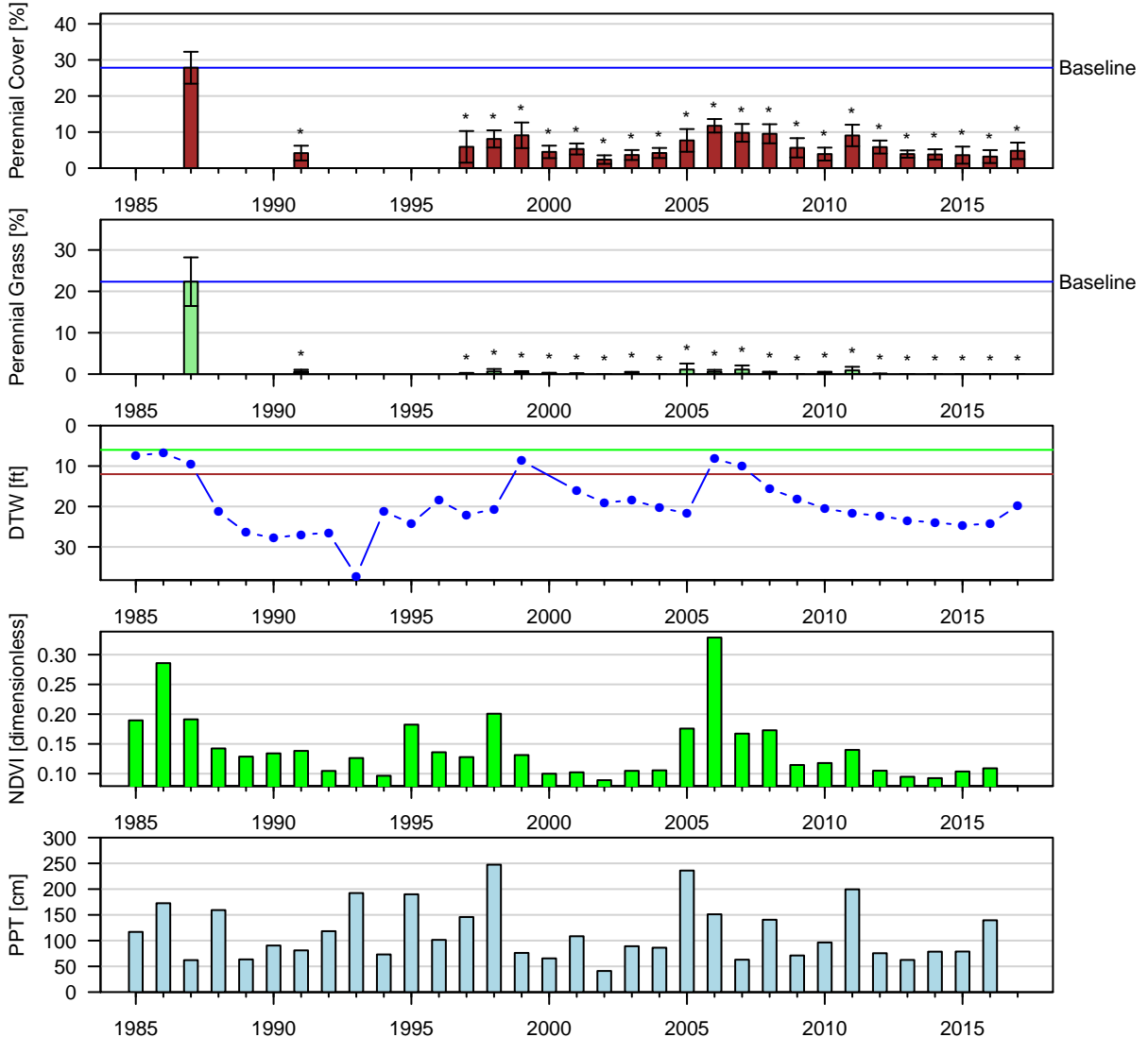


Figure 12: Two-Sample t-Test: Baseline (lpt) vs. reinventory (* $p < 0.05$).
 Baseline sample size ($n = 6$). Current year sample size ($n = 5$). Error bars = 95% CI.

LAW070 (W/C): W | Type: E | Rush/Sedge Meadow
 Entisols Sabies | ESD: Sodic Terrace
 Geomorphic: stream terraces

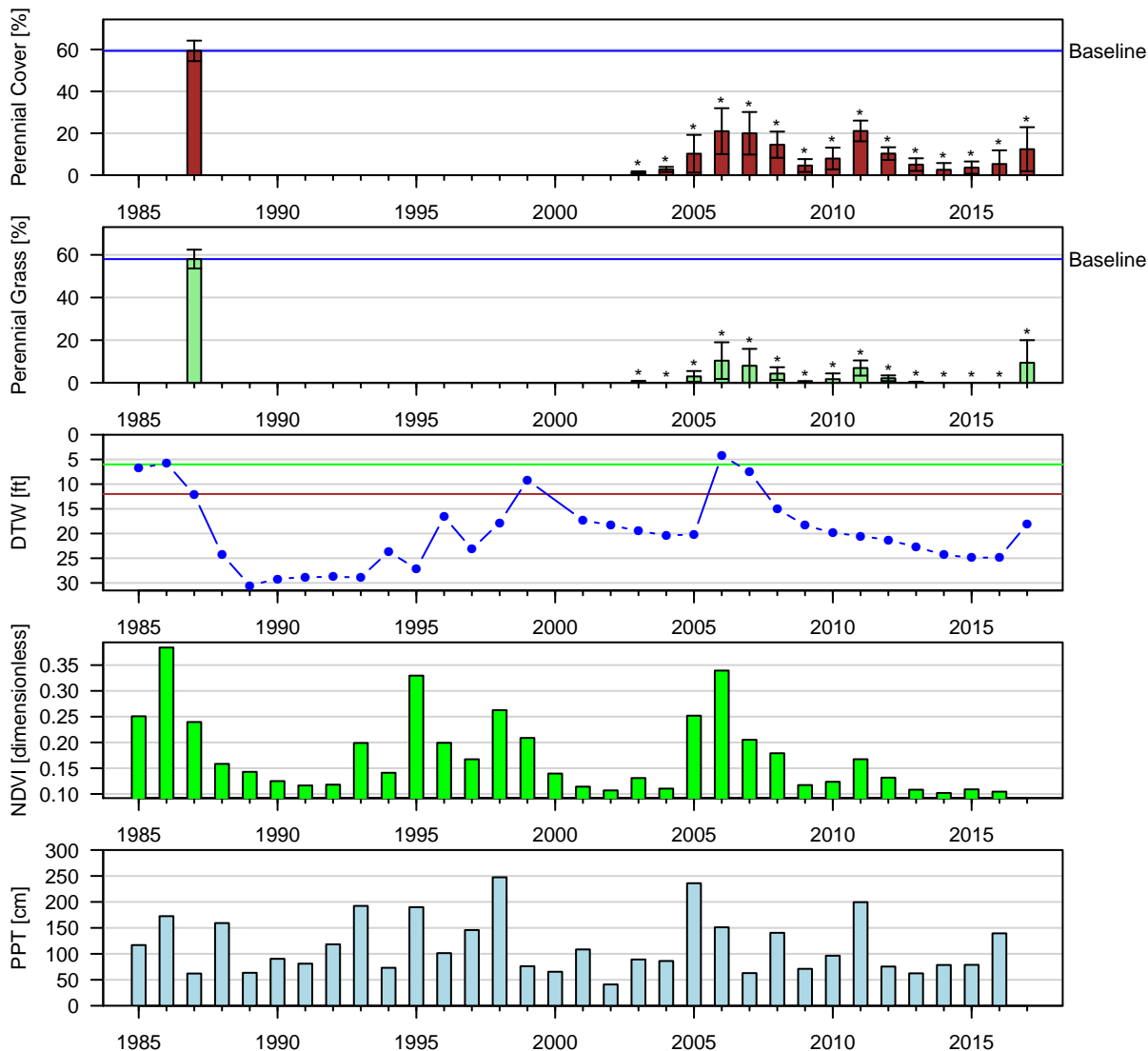


Figure 13: Two-Sample t-Test: Baseline (lpt) vs. reinventory (* $p < 0.05$).

Baseline sample size ($n = 6$). Current year sample size ($n = 5$). Error bars = 95% CI.

LAW072 (W/C): W | Type: C | Alkali Meadow
 Aridisols Numu | ESD: Saline Bottom
 Geomorphic: stream terraces

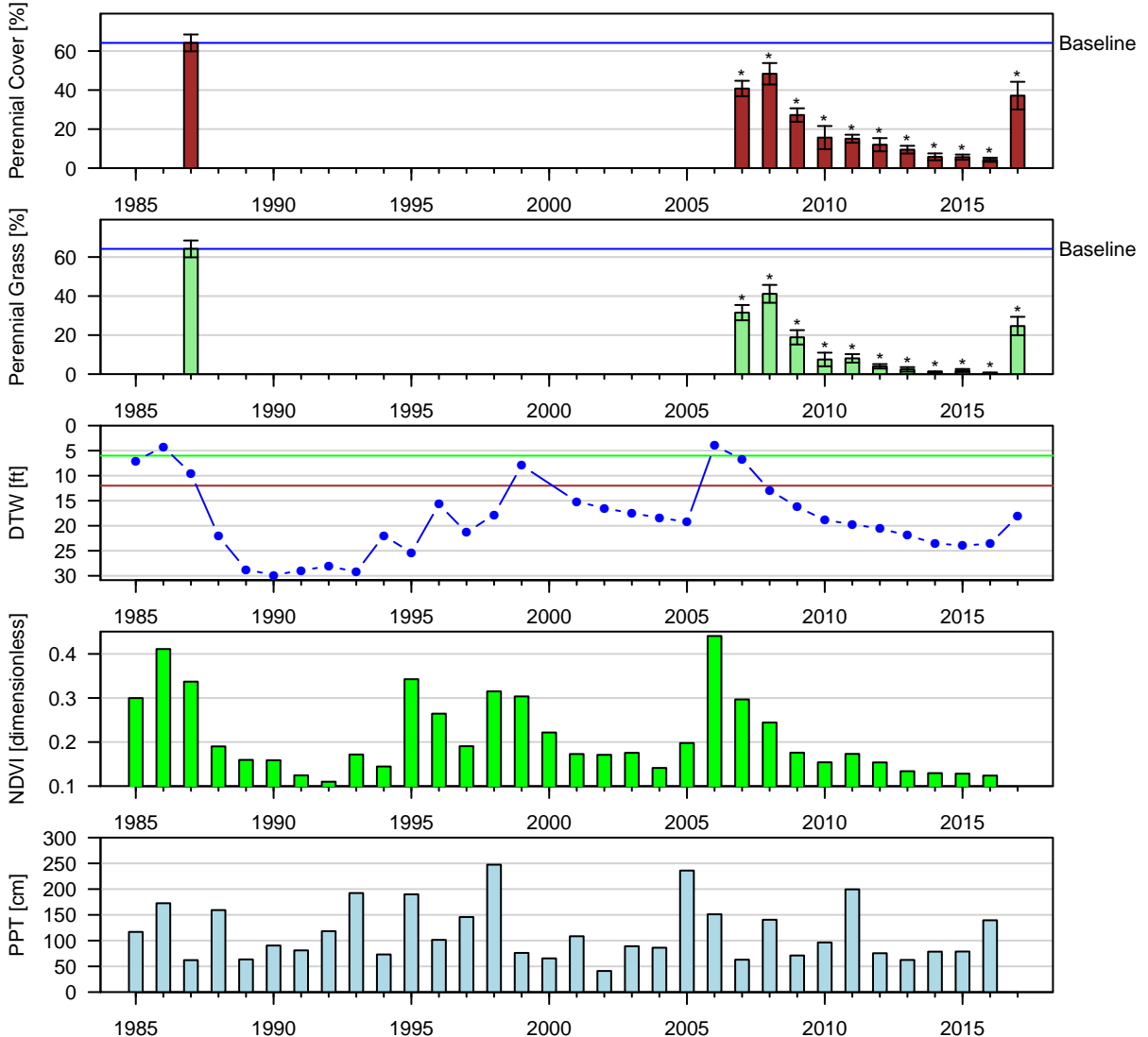


Figure 14: Two-Sample t-Test: Baseline (lpt) vs. reinventory (* p < 0.05).

Baseline sample size (n = 6). Current year sample size (n = 14). Error bars = 95% CI.

LAW078 (W/C): W | Type: C | Alkali Meadow
 Aridisols Numu | ESD: Saline Bottom
 Geomorphic: stream terraces

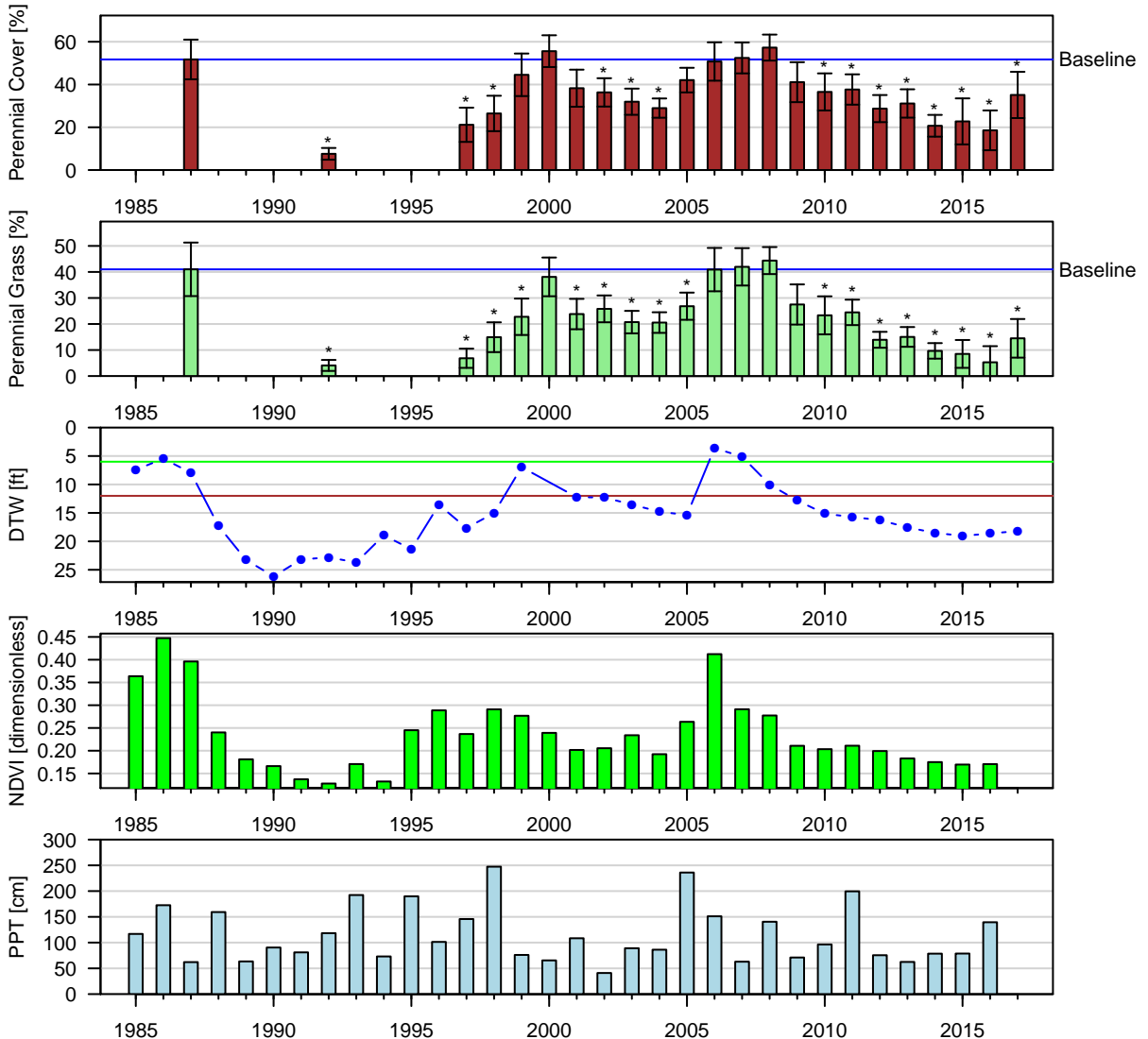


Figure 15: Two-Sample t-Test: Baseline (lpt) vs. reinventory (* $p < 0.05$).
 Baseline sample size ($n = 7$). Current year sample size ($n = 8$). Error bars = 95% CI.

LAW082 (W/C): W | Type: C | Rabbitbrush Meadow
 Entisols Sabies | ESD: Sodic Terrace
 Geomorphic: stream terraces

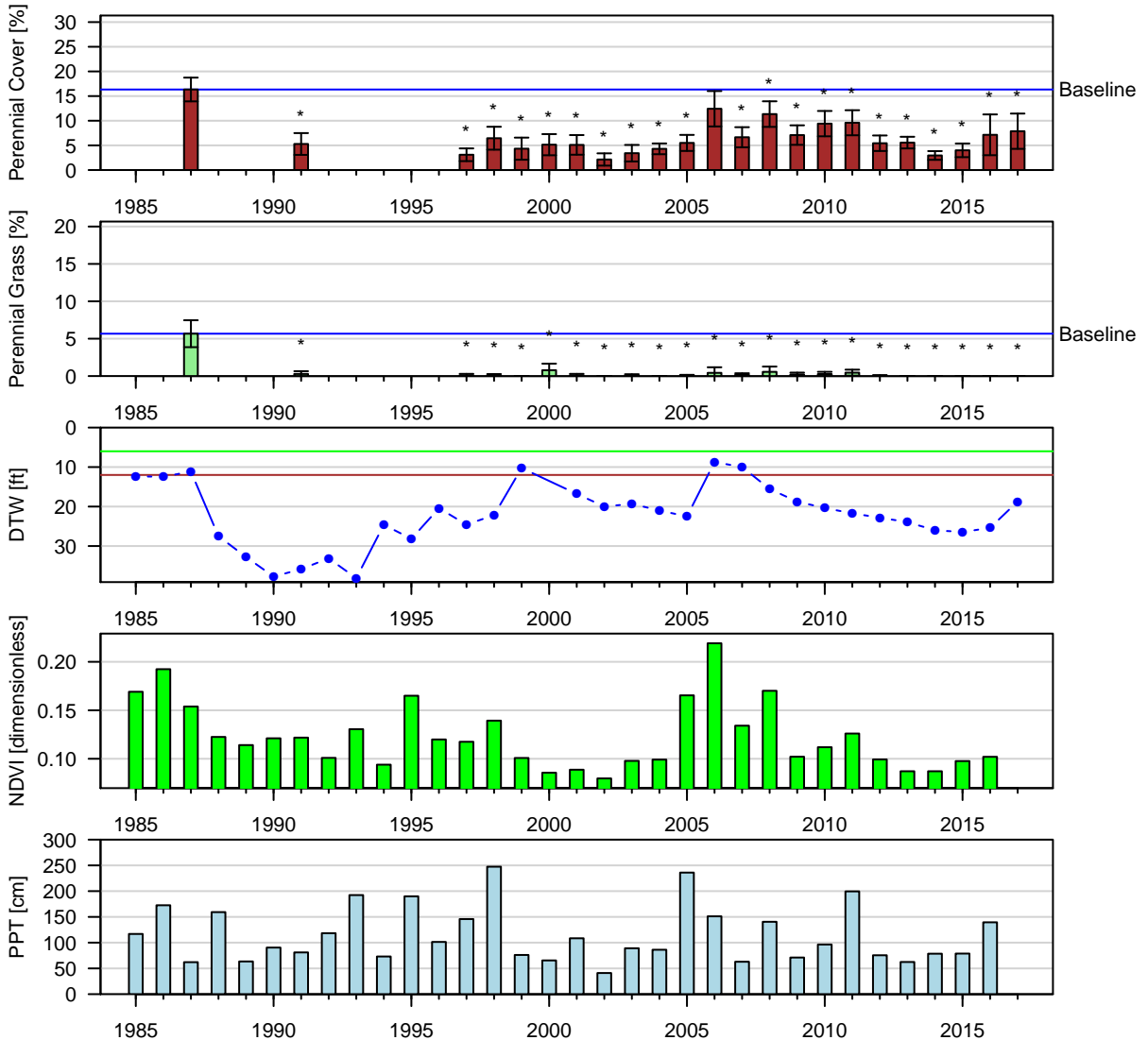


Figure 16: Two-Sample t-Test: Baseline (lpt) vs. reinventory (* $p < 0.05$).
 Baseline sample size ($n = 6$). Current year sample size ($n = 8$). Error bars = 95% CI.

LAW085 (W/C): W | Type: C | Alkali Meadow
 Aridisols Pokonahbe | ESD: Saline Bottom
 Geomorphic: lake terraces, stream terraces

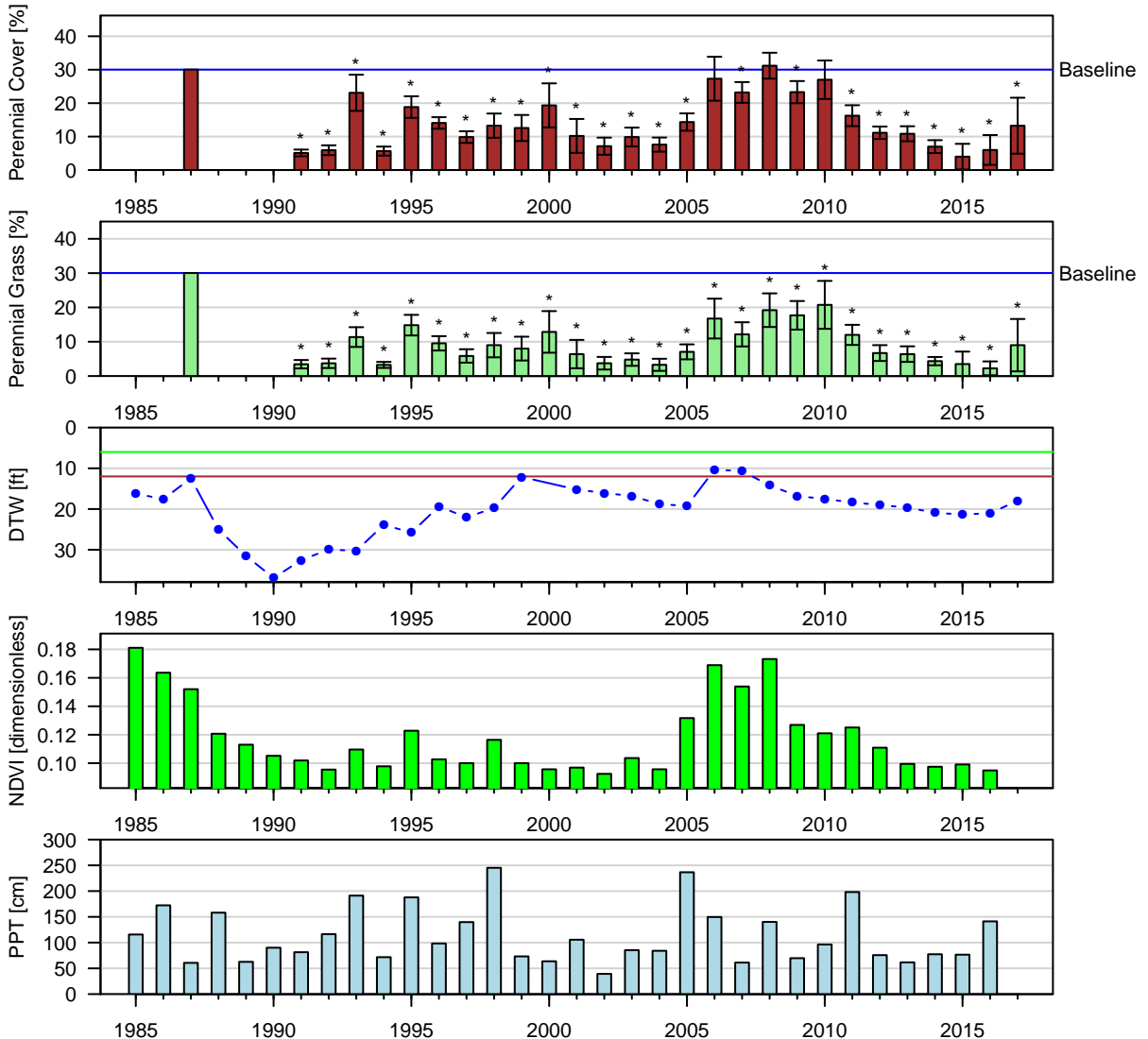


Figure 17: One-Sample t-Test: Baseline (wvcom) vs. reinventory (* p < 0.05).
 Baseline sample size (n = 1). Current year sample size (n = 4). Error bars = 95% CI.

LNP045 (W/C): W | Type: C | Nevada Saltbush Meadow
 Aridisols Winnedumah | ESD: Sodid Fan 5–8" P.Z.
 Geomorphic: lakebeds (relict), stream terraces

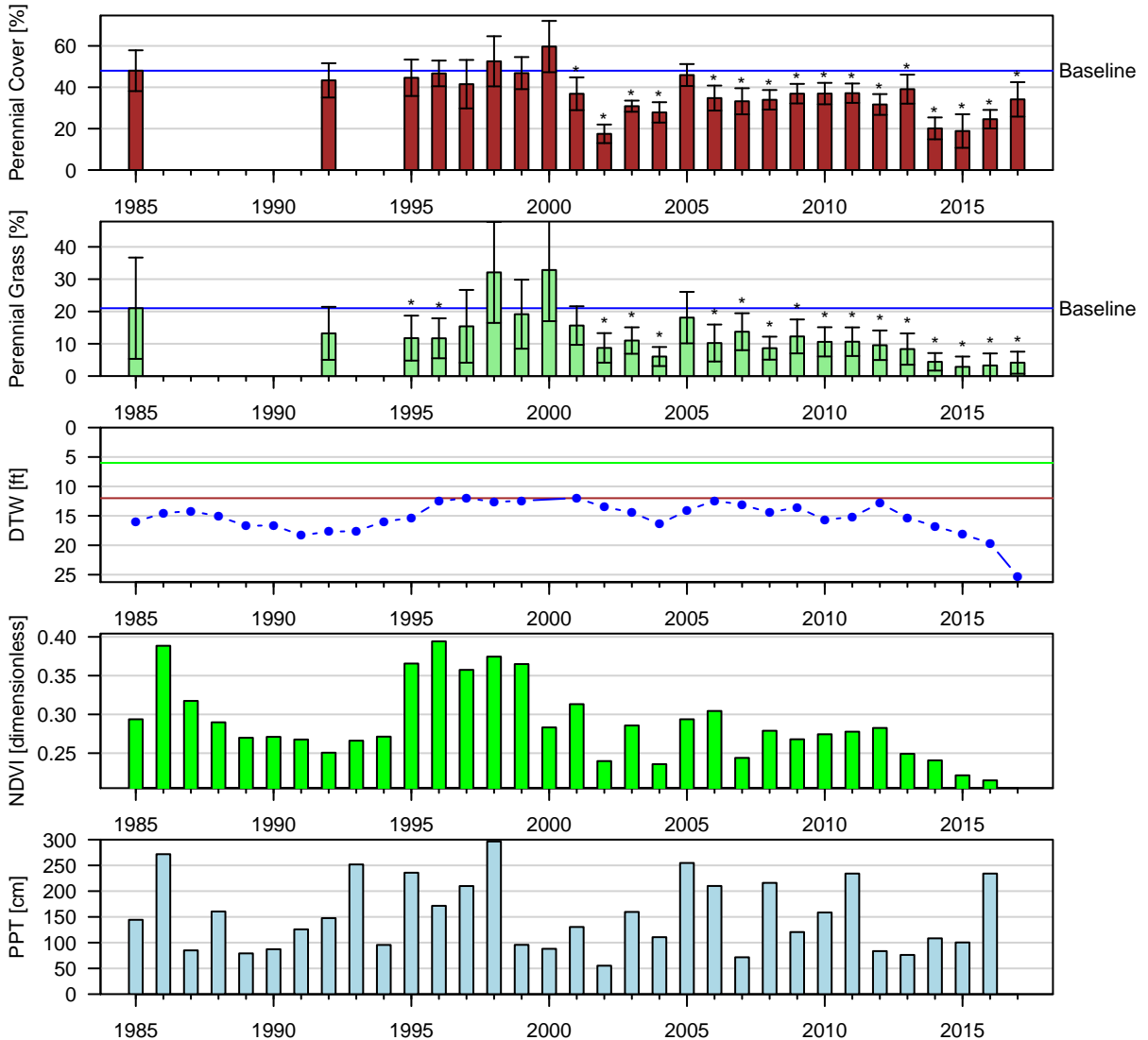


Figure 18: One-Sample t-Test: Baseline (lpt) vs. reinventory (* $p < 0.05$).

Baseline sample size ($n = 3$). Current year sample size ($n = 7$). Error bars = 95% CI.