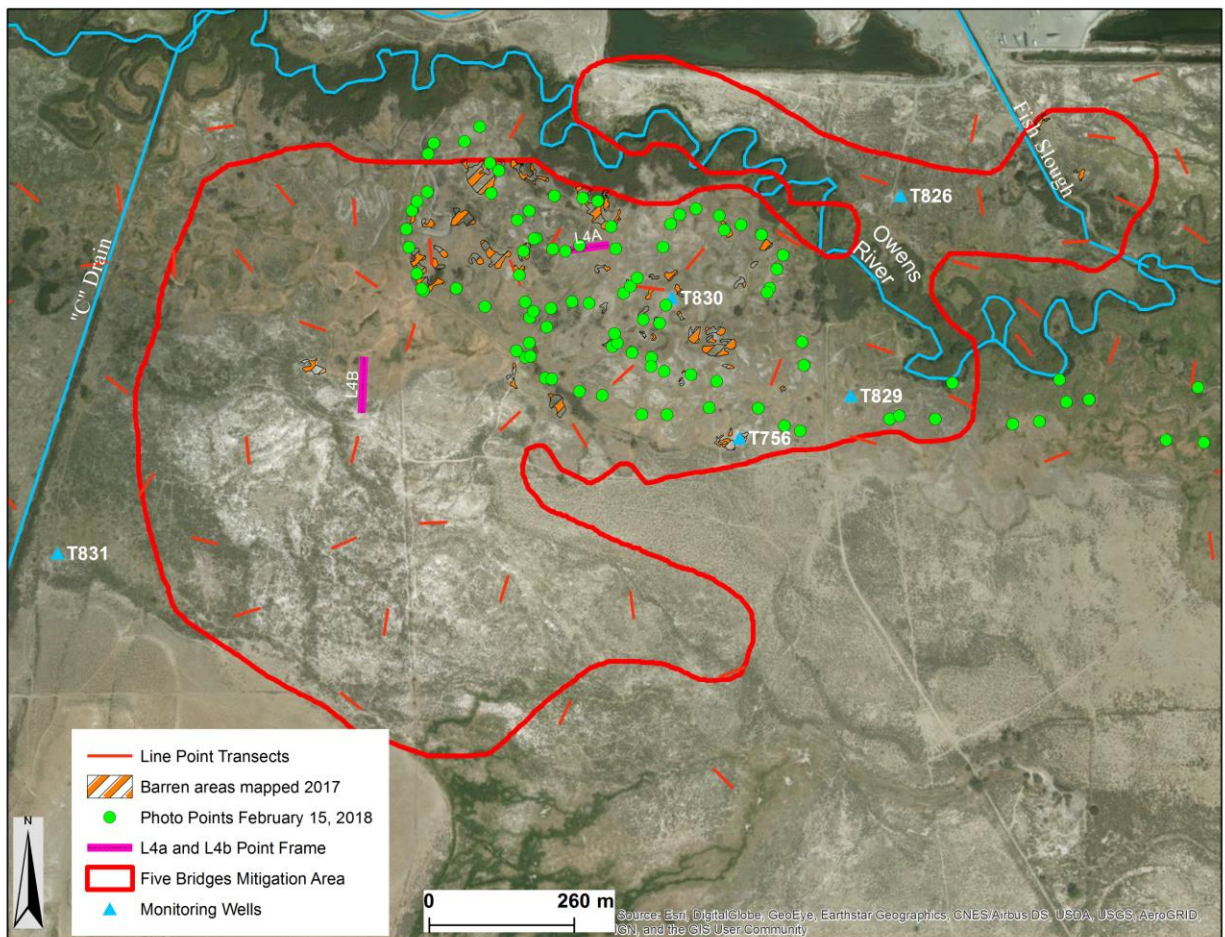


Appendix B. Photo points



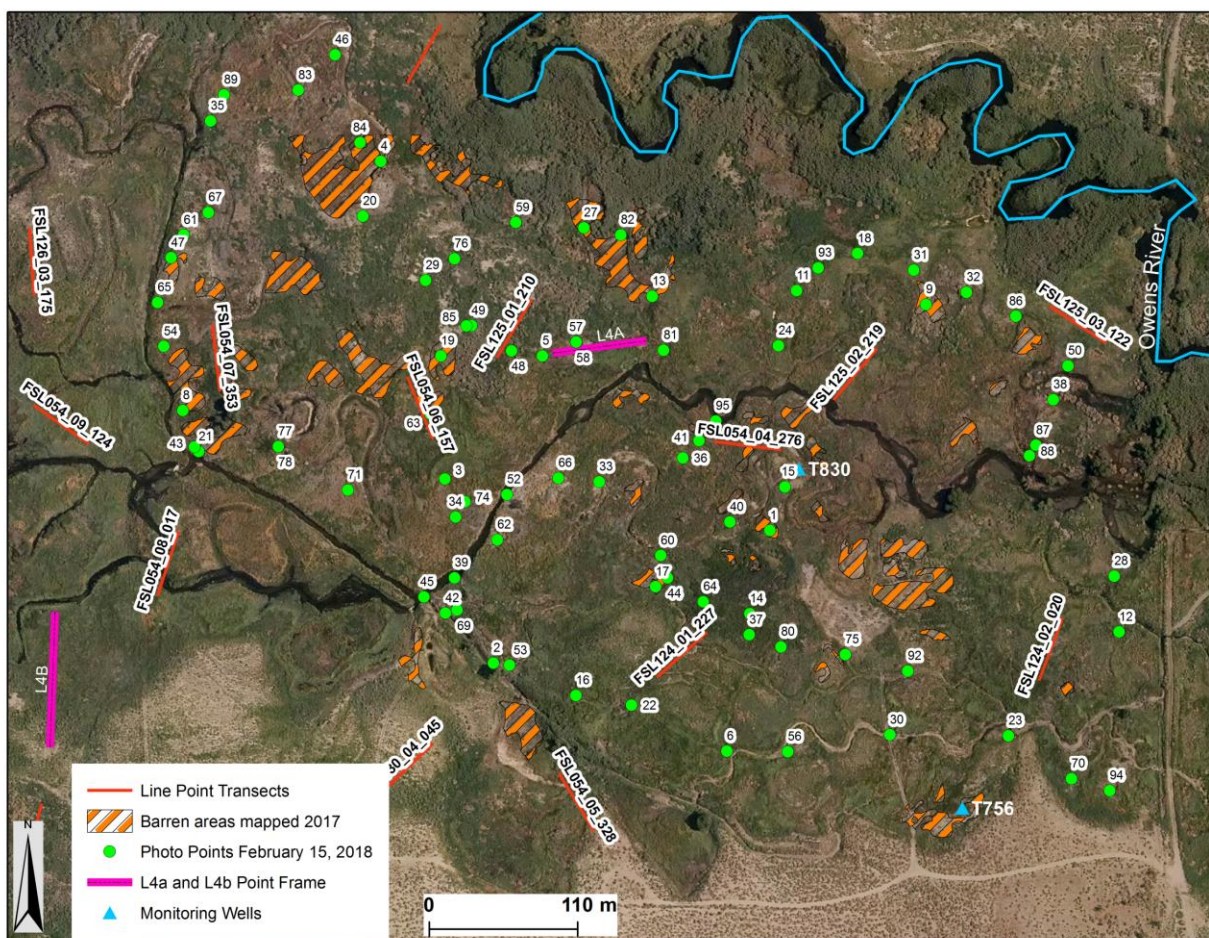


Fig 1. Locations of photo points acquired 15 February 2018 in reference to the Five Bridges Impact Area (top). The area known as the Multiple Completion Meadow, that has been slow to recover from pumping, encompasses portions of riparian parcel FSL 54, and meadow parcels, FSL 124 and 125 (bottom). Photos are numbered on this map to cross-reference spatial location of photos below. Bare areas were mapped by LADWP staff. Most photo points have *L. latifolium* present. Line point transects, permanent monitoring transects L4A and L4B, and monitoring wells are shown for reference. The photo points cover the area highlighted as needing further recovery in the 1999 Revegetation Plan.



Fig 2. Photo Point # 73 - Northwest portion of Multiple Completion Meadow. Extensive bare areas exist with *L. latifolium* established. Furrows are residual from drill-seeding activities by LADWP.



Fig 3. Photo Point # 42 - Northwest portion of the Multiple Completion Meadow. Extensive bare areas exist with *L. latifolium* established. Furrows are residual from drill-seeding activities by LADWP.



Fig 4. Photo Point # 76 - Northwest portion of the Multiple Completion Meadow. Extensive bare areas exist with *L. latifolium* established. Furrows are residual from drill-seeding activities by LADWP.



Fig 5. Photo Point # 43 - Northwest portion of the Multiple Completion Meadow. Patchy bare area, native grass and *L. latifolium* established.



Fig 6. Photo Point # 50 – Western portion of the Multiple Completion Meadow. *L. latifolium* established and leafing out on Feb 15, 2018.



Fig 7. Photo Point # 8 - Western portion of the Multiple Completion Meadow. *L. latifolium* established.



Fig 8. Photo Point # 65 - Western portion of the Multiple Completion Meadow. *L. latifolium* established in foreground.



Fig 9. Photo Point # 65 - Western portion of the Multiple Completion Meadow. *L. latifolium* is established in bare areas with native grass in the background.



Fig 10. Photo Point # 59 - Central portion of the Multiple Completion Meadow. Native grass, bare areas and *L. latifolium* established.



Fig 11. Photo Point # 17 - Central portion of the Multiple Completion Meadow. Native grass, bare areas, and *L. latifolium* established.



Fig 12. Photo Point # 11 - Northern portion of the Multiple Completion Meadow. Native grass, bare areas, and *L. latifolium* established.



Fig 13. Photo Point # 53 - North-Central portion of the Multiple Completion Meadow. Bare areas, *L. latifolium*, and native grass in background.



Fig 14. Photo Point # 70 - North-Central portion of the Multiple Completion Meadow. Bare areas, *L. latifolium*, and native grass.



Fig 15. Photo Point # 10 - North-Eastern portion of the Multiple Completion Meadow. *L. latifolium* in foreground.



Fig 16. Photo Point # 9 - North-Eastern portion of the Multiple Completion Meadow. Bare area and *L. latifolium* in foreground.



Fig 17. Photo Point # 34 - Eastern portion of the Multiple Completion Meadow. Bare areas and *L. latifolium* in foreground.



Fig 18. Photo Point # 34 - Eastern portion of the Multiple Completion Meadow. Native grass, bare areas and *L. latifolium* in foreground.



Fig 19. Photo Point # 20 - Southern portion of the Multiple Completion Meadow. *L. latifolium* in foreground.



Fig 20. Photo Point # 49 - Southern portion of the Multiple Completion Meadow. *L. latifolium* in foreground.



Fig 21. Photo Point # 49 - Central portion of the Multiple Completion Meadow. *L. latifolium* in foreground.



Fig 22. Photo Point # 62 - Central portion of the Multiple Completion Meadow. *L. latifolium* in foreground.



Fig 23. Photo Point # 32 - Central portion of the Multiple Completion Meadow. *L. latifolium* in foreground.



Fig 24. Photo Point # 36 - Central portion of the Multiple Completion Meadow. *L. latifolium* in foreground.



Fig 25. Photo Point # 56 - Central portion of the Multiple Completion Meadow. *L. latifolium* in foreground.



Fig 26. Photo Point # 56 - Central portion of the Multiple Completion Meadow. *Salsola tragus* (tumbleweed) patch in foreground.

