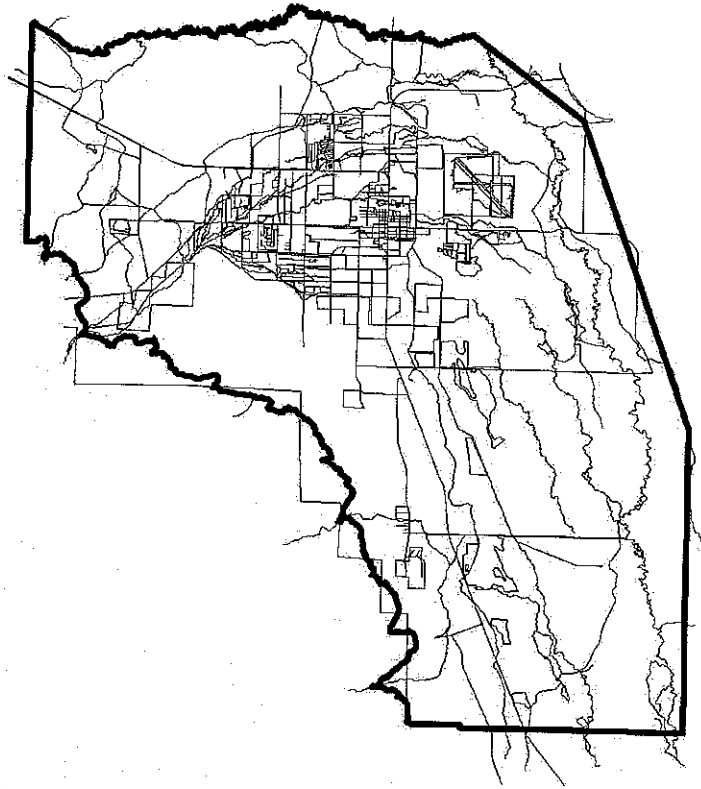


FINAL
THE BISHOP CONE AUDIT FOR THE 2011-2012 RUNOFF
YEAR



Randy Jackson
Senior County Hydrologist



Inyo County Water Department
Report 2012-1
October 25, 2012

TABLE OF CONTENTS

INTRODUCTION	1
WATER USES ON LADWP (Los Angeles Department of Water and Power)-OWNED LAND ON THE BISHOP CONE	1
TOTAL LADWP GROUNDWATER EXTRACTION ON LADWP-OWNED LAND ON THE BISHOP CONE FOR RUNOFF YEARS 2010-2011 AND 2011-2012	3
COMPLIANCE WITH THE INYO COUNTY/LOS ANGELES LONG-TERM GROUNDWATER MANAGEMENT AGREEMENT	5
APPENDIX A:	
Section VII.A of the Inyo County/Los Angeles Long-Term Groundwater Management Agreement	
Section IV.D of the Green Book	
APPENDIX B:	
Data on Uses and Total Groundwater Extracted on the Bishop Cone Supplied by LADWP	

TABLES

TABLE 1. WATER USES ON LOS ANGELES-OWNED LAND ON THE BISHOP CONE	1
TABLE 2. TYPE OF GROUNDWATER EXTRACTION ON LADWP LANDS ON THE BISHOP CONE	3
TABLE 3. FLOWING AND PUMPED GROUNDWATER BY WELL ON THE BISHOP CONE IN RUNOFF YEAR 2011-2012	4
TABLE 4. LADWP USES IN COMPARISON TO LADWP GROUNDWATER EXTRACTION ON THE BISHOP CONE	5

ILLUSTRATIONS

MAP 1. BISHOP CONE AUDIT FEATURES	Attachment 1
FIGURE 1. TYPE OF LADWP GROUNDWATER AND TOTAL GROUNDWATER EXTRACTION ON THE BISHOP CONE FOR RUNOFF YEARS 2010-2011 AND 2011-2012	4

INTRODUCTION

The Bishop Cone audit is an annual accounting of Los Angeles Department of Water and Power's (LADWP) groundwater extraction and water usage on Los Angeles-owned lands on the Bishop Cone. Section VII.A of the Inyo County/Los Angeles long-term groundwater management agreement provides that, "Before the Department may increase groundwater pumping above present levels, or construct any new wells on the [Bishop] Cone, the Technical Group must agree on a method for determining the exact amount of water annually used on Los Angeles-owned lands on the Cone. The agreed upon method shall be based on a jointly conducted audit of such water uses." (Appendix A).

At its October 17, 1995 meeting, the Technical Group agreed to recommend to the Inyo County/Los Angeles Standing Committee the description of a Bishop Cone audit procedure to be incorporated into the Green Book. That audit procedure is attached (See Appendix A of this report for section IV.D of the Green Book). The Green Book is the technical appendix to the long-term agreement. The Inyo County/Los Angeles Standing Committee adopted the procedure on November 7, 1996 as section IV.D of the Green Book.

WATER USES ON LADWP-OWNED LAND ON THE BISHOP CONE

Section IV.D.1.a. of the Green Book states, "For the purposes of the Bishop Cone audit, water usage on Los Angeles-owned land on the Bishop Cone is defined as the quantity of water supplied to such land, including conveyance losses, less any return flow to the aqueduct system" (See Appendix A). Table 1, below, is a compilation of water usage in acre-feet (AF) on LADWP-owned land on the Bishop Cone for the runoff years of 2010-2011 and 2011-2012.

TABLE 1. WATER USES ON LOS ANGELES-OWNED LAND ON THE BISHOP CONE.

LADWP ACCOUNT NUMBER	RUNOFF YEAR*¹ 2010-2011 (AF)	RUNOFF YEAR*¹ 2011-2012 (AF)
BA354B or BA362B	647.00	783.00
BA302A	105.00	133.00
BA302B	835.70	1073.87
BA311	2546.08	3138.24
BA313	506.48	506.42
* ³ BA324	1122.70	1274.43
BA324A	NO DATA	NO DATA
BA324C	NO DATA	NO DATA
BA387A	480.65	694.00
BARECF	458.85	567.34
BA339	249.56	292.51
BA342	NO DATA	NO DATA

LADWP	RUNOFF YEAR*¹	RUNOFF YEAR*¹
ACCOUNT NUMBER	2010-2011 (AF)	2011-2012 (AF)
BA362C	NO DATA	NO DATA
BA362D	593.78	663.22
BA304	242.00	249.00
BA324B	NO DATA	NO DATA
BA387B	NO DATA	NO DATA
BA397 (SAME AS BA387B-NEW LEASE HOLDER)	2203.75	3197.99
BA361A	2793.00	2205.20
BA361B	2250.16	2266.16
BA354A or 362A or BA502B	1025.00	933.00
BARECA	666.00	470.00
BARECC	72.00	88.00
BARECD	2727.00	2352.00
BA338	2223.53	3011.39
BAOPRA	0.00	0.00
BAOPRB	0.00	0.00
BAGWRA	NO DATA	682.00
RV361	66.08	NO DATA
RV361B	NO DATA	NO DATA
RVRECA	1815.00	2983.00
LARECB	NO DATA	NO DATA
LAE&MH	0.00	0.00
BAICR	NO DATA	NO DATA
BA1478 (SAME AS BAICR-NEW LEASE HOLDER)	420.62	147.08
BA353	217.39	204.96
BA393	118.16	99.00
* ³ BA500	506.90	893.81
* ³ BA005A	34.86	38.67
* ² BA005B	49.00	69.00
* ² BA006A	2080.24 (No Credit) * ⁵	69.87 (No Credit) * ⁵
BA1479	32.39	29.00
BA392	568.00 (No Credit) * ⁵	338.55 (No Credit) * ⁵
BA301 (Aubrey and Moxley)	605.22	610.49
BA335 (Partridge and Johnson)	151.04	164.16
BA394 (Berner)	NO DATA	NO DATA
BA360 (Allen)	NO DATA	NO DATA
BCCL	NO DATA	4.77 (DENY)
TOTAL	25,764.90	29,819.94

*¹ A runoff year is defined as starting April 1st and ending March 31st of the following year.

*² Accounts were first listed in the 2002-2003 runoff year. The account BA006A is an active water use account, but in the past has been denied by Inyo for lack of measuring devices. Devices have not yet been installed at account BA006A. NO DATA -The Account was not active, no data was reported. 0.00-The account was active, no use was reported, data was 0.00 acre-feet.

*3 New accounts in years past, field inspection performed and accounts credited.

*4 Account BA1479 same as BA342. Account BA502B same as BA354B. Account BA502A same as BA354A.

*5 Accounts need field inspection to establish credit.

Map 1 attached, shows the location of the Bishop Cone, the pumping and flowing wells on the Bishop Cone and the location of selected Bishop Cone accounts. Account information on the map is not complete and it will be updated in the future as data become available. In general, there was an increase in water use, on most accounts from runoff years 2010-2011 to 2011-2012 as well as an overall total increase in water use of 4,055.04 acre-feet in 2011-2012. Several accounts were not granted credit this runoff year and await inspections in the runoff year (See Table 1). As of this time, stockwater has not been defined as individual accounts nor has inspection of the accounts taken place. Stockwater credit is therefore denied until the above work has taken place and inspections concerning the individual stockwater accounts have been conducted and successfully confirm the measurement on the accounts.

TOTAL LADWP GROUNDWATER EXTRACTION ON LADWP-OWNED LAND ON THE BISHOP CONE FOR RUNOFF YEARS 2010-2011 AND 2011-2012

Section IV.D.1.d of the Green Book states, "Total groundwater extraction by LADWP will be compared with corrected water usage on the Bishop Cone for the runoff year. Total groundwater extraction is defined as the sum of all groundwater pumped by LADWP plus the amount of artesian water that flowed out of LADWP uncapped wells on the Bishop Cone during the runoff year."

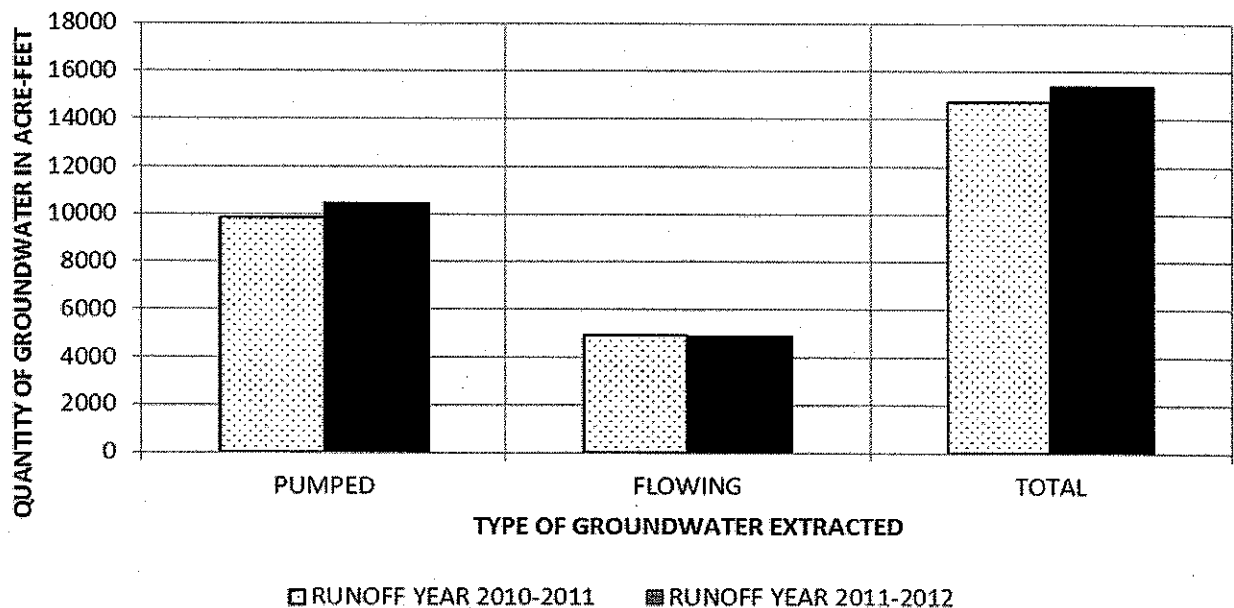
Total LADWP groundwater extraction and groundwater extraction classified as flowing and pumped groundwater in acre-feet, on the Bishop Cone for the runoff years of 2010-2011 and 2011-2012, are shown in Table 2, below. The 2011-2012 Runoff Year groundwater extraction shows an increase compared to the previous runoff year's extraction of some 659 acre-feet.

TABLE 2. TYPE OF GROUNDWATER EXTRACTION ON LADWP LANDS ON THE BISHOP CONE

TYPE OF GROUNDWATER	RUNOFF YEAR 2010-2011 (AF)	RUNOFF YEAR 2011-2012 (AF)
PUMPED	9,828.00	10,475.00
FLOWING	4,899.00	4,911.00
TOTAL	14,727.00	15,386.00

Total groundwater extraction and groundwater extraction classified as flowing and pumped groundwater in acre-feet on LADWP-owned land on the Bishop Cone are shown in a bar chart in Figure 1, below.

**FIGURE 1. TYPE OF LADWP GROUNDWATER AND
TOTAL GROUNDWATER EXTRACTION ON THE
BISHOP CONE FOR RUNOFF YEARS 2010-11 AND
2011-2012**



Flowing and pumped groundwater by well on the Bishop Cone are shown in Table 3, below.

TABLE 3. FLOWING AND PUMPED GROUNDWATER BY WELL ON THE BISHOP CONE IN RUNOFF YEAR 2011-2012.

WELL	FLOWING GROUNDWATER (ACRE-FEET)	PUMPED GROUNDWATER (ACRE-FEET)
F121	36	NA
F122	177	NA
F123	159	NA
F124	0	NA
F125	988	NA
F126	263	NA
F127	373	NA
F128	330	NA
F129	155	NA
F130	237	NA
F131	826	NA
F132	324	NA
F133	366	NA
F134	580	NA
F136	97	NA
W410	NA	2,548
W406	NA	1,020
W371	NA	1,113
W411	NA	1,298

WELL	FLOWING GROUNDWATER (ACRE-FEET)	PUMPED GROUNDWATER (ACRE-FEET)
W407	NA	876
W408	NA	1,107
W140	NA	1,317
W412	NA	1,196
TOTAL	4,911	10,475

**COMPLIANCE WITH THE INYO COUNTY/LOS ANGELES LONG-TERM
GROUNDWATER MANAGEMENT AGREEMENT**

The Inyo County/Los Angeles long-term groundwater management agreement provides that, during any runoff year, total groundwater extraction by LADWP on the Bishop Cone shall not exceed water usage on Los Angeles-owned land on the Cone. Table 4, below, shows that LADWP was within compliance with the above provision for runoff years 2010-2011 and 2011-2012.

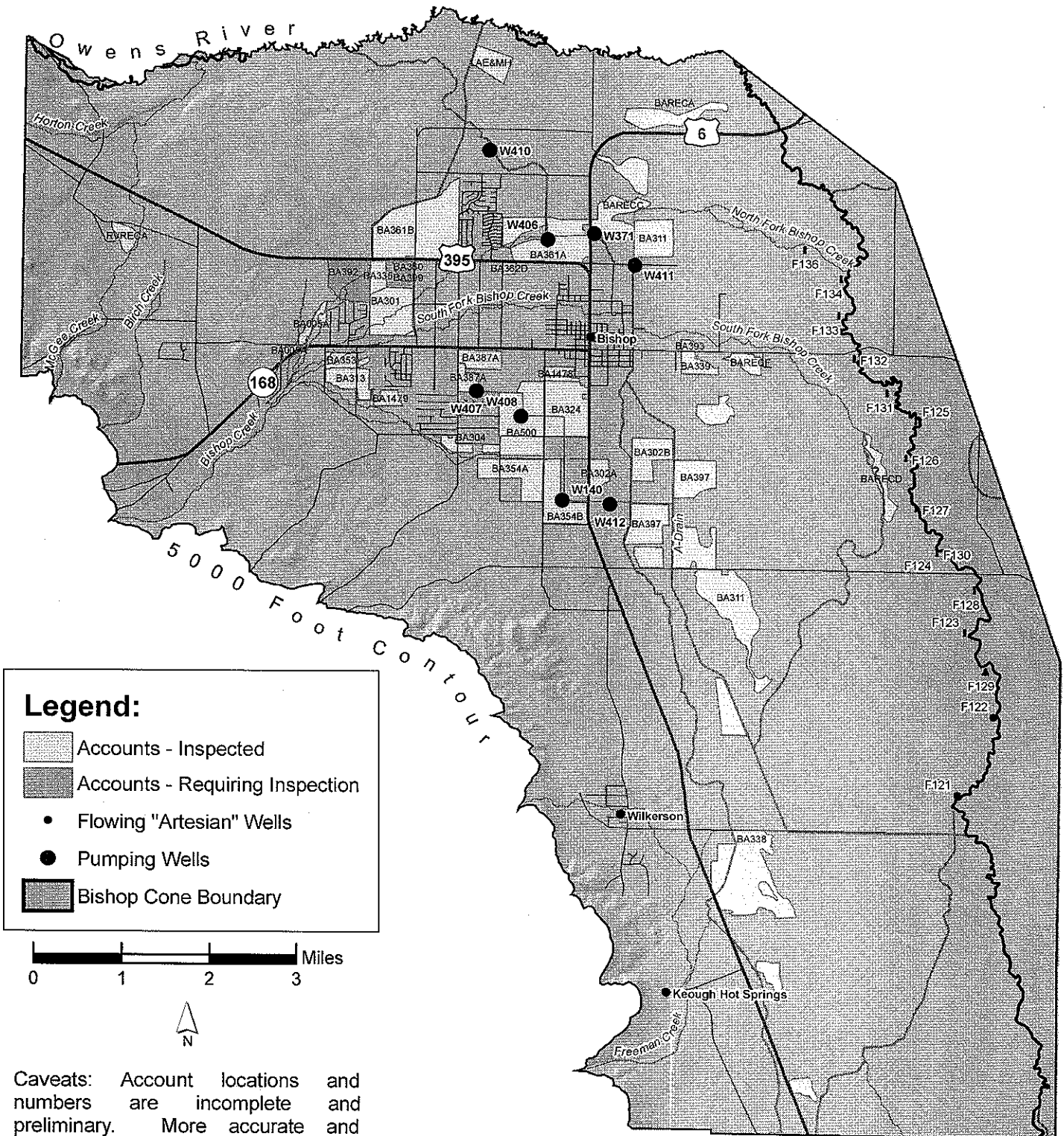
TABLE 4. LADWP USES IN COMPARISON TO LADWP GROUNDWATER EXTRACTION ON THE BISHOP CONE.

	RUNOFF YEAR 2010-2011 (AF)	RUNOFF YEAR 2011-2012 (AF)
TOTAL USES	25,764.90	29,819.94
TOTAL GROUNDWATER EXTRACTION	14,727.00	15,386.00

ATTACHMENT 1

Inyo County Water Department

Map 1. Bishop Cone Audit Features



APPENDIX A

Section VII.A of the Inyo County/Los Angeles Long-Term Groundwater Management Agreement

Section IV.D of the Green Book

THE INYO/LA AGREEMENT

1 state water well standards. The sealing of a monitoring well
2 shall be designed to prevent cross flow between aquifers.

3 The EIR describes the impacts of the construction
4 and operation of fifteen (15) new wells. The construction and
5 operation of any new wells not described in the EIR will be
6 the subject of a subsequent CEQA review.

7 The Technical Group may agree that some existing
8 wells that now supply enhancement/mitigation projects be
9 converted to Department production wells. Wells that are the
10 only source of supply for an enhancement/mitigation project
11 shall not be converted. Water for the enhancement/mitigation
12 project formerly supplied by a converted well will be supplied
13 as necessary from Department production wells. Any enhance-
14 ment/mitigation well converted to a production well could
15 later be reverted to an enhancement/mitigation well if agreed
16 to by the Technical Group.

17 VII. GROUNDWATER PUMPING ON THE BISHOP CONE ✓

18 A. Any groundwater pumping by the Department on the "Bishop
19 Cone" (Cone) shall be in strict adherence to the provi-
20 sions of the Stipulation and Order filed on the 26th day
21 of August, 1940, in Inyo County Superior Court in the
22 case of Hillside Water Company, a corporation, et al. vs.
23 The City of Los Angeles, a Municipal Corporation, et al.,
24 ("Hillside Decree").

25 Before the Department may increase ground-
26 water pumping above present levels, or construct any new
27 wells on the Cone, the Technical Group must agree on a
28 method for determining the exact amount of water annually
29 used on Los Angeles-owned lands on the Cone. The agreed
30 upon method shall be based on a jointly conducted audit

1 of such water uses.

2 The Department's annual groundwater extractions
3 from the Cone shall be limited to an amount not greater
4 than the total amount of water used on Los Angeles-owned
5 lands on the Cone during that year. Annual groundwater
6 extractions by the Department shall be the total of all
7 groundwater pumped by the Department on the Cone, plus
8 the amount of artesian water that flowed out of the
9 casing of uncapped wells on the Cone during the year.
10 Water used on Los Angeles-owned lands on the Cone, shall
11 be the quantity of water supplied to such lands, includ-
12 ing conveyance losses, less any return flow to the
13 aqueduct system.

- 14 B. The overall management goals and principles and the spe-
15 cific goals and principles for each vegetation classifi-
16 cation of this Stipulation and Order apply to vegetation
17 on the Cone.

18 **VIII. GROUNDWATER RECHARGE FACILITIES**

19 It is recognized that development of new groundwater
20 storage, and the implementation and operation of feasible
21 groundwater banking and recharge facilities in the Owens
22 Valley and in the Rose Valley that will not cause significant
23 effects on the environment may be beneficial. The development
24 of any such facilities in the Owens Valley and in Rose Valley
25 are subject to agreement of the Inyo County Board of Supervi-
26 sors and the Department, acting through the Standing Commit-
27 tee. The Inyo County Board of Supervisors shall not unreason-
28 ably refuse to agree to a feasible groundwater banking facili-
29 ty that will not cause significant decrease or change in
30 vegetation or a significant effect on the environment. The

GREEN BOOK

D. Bishop Cone Audit

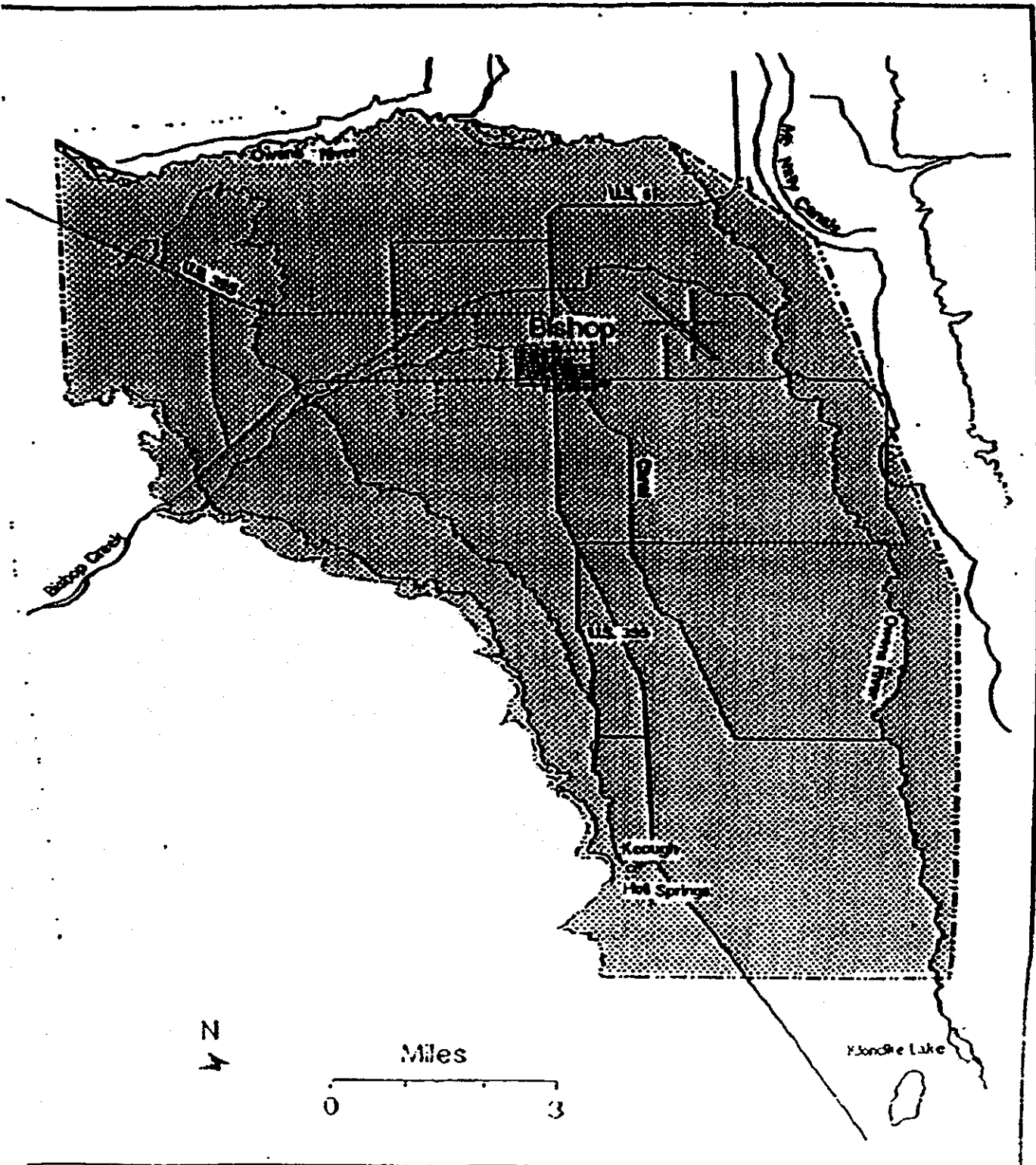
This sub-section describes the procedures for conducting the Bishop Cone audit in accordance with Section VII.A of the Agreement. The Bishop Cone audit is an annual accounting of LADWP groundwater extraction and water usage on Los Angeles-owned land on the Bishop Cone. The Agreement provides that, during any runoff year, total groundwater extraction by LADWP on the Bishop Cone shall not exceed water usage on Los Angeles-owned land on the Cone. The area defined as the Bishop Cone is shown as Figure IV.D.1.

1. Procedures for Conducting the Bishop Cone Audit

- a. For the purposes of the Bishop Cone audit, water usage on Los Angeles-owned land on the Bishop Cone is defined as the quantity of water supplied to such land, including conveyance losses, less any return flow to the aqueduct system. Water usage is documented on a runoff-year basis and is compiled by LADWP each May in the Bishop Area Water Use Report. At the conclusion of each runoff year, LADWP will forward the final water use report for the runoff year to Inyo County.
- b. The final water use report will be compared for consistency with the previous year's report. If measuring stations have been added or removed from the water-use report during the year, or if a significant change in the pattern of water usage occurs (for example, an account that has not received water for one year receives a

FIGURE IV.D.1

Bishop Cone Boundary



considerable amount the next year), the location will be field-checked. The field-check will evaluate whether changes in water usage warrant the changes noted in the report. If a change is made in the method of delivery to or return from an account that results in an overestimation of uses on the Bishop Cone, water usage for that account will not be credited to the total uses for the audit.

- c. Water usage for accounts BAINR (Bishop Indian Reservation), BA391 (outside of Bishop Cone boundary), and BANEST (West Bishop private uses) will be subtracted from the total reported water usage.
- d. Total groundwater extraction by LADWP will be compared with the corrected water usage on the Bishop Cone for the runoff year. Total groundwater extraction is defined as the sum of all groundwater pumped by LADWP plus the amount of artesian water that flowed out of uncapped wells on the Bishop Cone during the runoff year. During any runoff year, total groundwater extraction by LADWP on the Bishop Cone shall not exceed water usage on Los Angeles-owned land on the Cone.
- e. A draft report summarizing the results of the Bishop Cone audit will be prepared annually as an Inyo County Water Department report and will be submitted to the Technical Group in June for a 30-day review.
- f. A final Bishop Cone audit report will be submitted in July to the Technical Group, the Standing

**Committee, the Inyo County Board of Supervisors,
and the Inyo County Water Commission.**

LADWP will notify Inyo County of any changes in the status, location, or operation of any measuring station used to conduct the Bishop Cone audit at the time the final Bishop Area Water Use Report is submitted to the County. LADWP will also notify the County of any changes in the boundaries of the accounts included in the audit.

Upon request by Inyo County, LADWP will provide measuring station data for accounts included in the audit to assist the County in verifying water usage for individual accounts.

APPENDIX B

Data on Uses and Total Groundwater Extracted on the Bishop Cone Supplied by LADWP

Department of Water and Power



the City of Los Angeles

ANTONIO R. VILLARAIGOSA
Mayor

Commission
THOMAS S. SAYLES, *President*
ERIC HOLOMAN, *Vice-President*
RICHARD F. MOSS
CHRISTINA E. NOONAN
JONATHAN PARFREY
BARBARA E. MOSCHOS, *Secretary*

RONALD O. NICHOLS
General Manager

June 14, 2012

RECEIVED

JUN 19 2012

Dr. Robert Harrington, Director
Inyo County Water Department
P.O. Box 337
Independence, CA 93526-0337

Inyo Co. Water Department

Dear Dr. Harrington:

Subject: Bishop Cone Audit

This is in response to your letter dated February 24, 2012. Included is a hard copy and an electronic copy for the following:

2011-2012 runoff year Bishop Cone Audit Water Use Report.
2011-2012 runoff year Flowing well discharge data from the Bishop Cone.
2011-2012 runoff year Pumping well discharge data for the Bishop Cone.

If you have any questions, please contact Mr. William Jones of my staff at (760) 873-0380.

Sincerely,


Gene L. Coufal
Aqueduct Manager

Enclosures
c w/o enc: Mr. William Jones

Water and Power Conservation . . . a way of life

□ Bishop, California mailing address: 300 Mandich Street • Bishop, CA 93514-3449 • Telephone: (760) 873-0208 • Fax (760) 873-0266
111 North Hope Street, Los Angeles, CA 90012-2607 • □ Mailing address: Box 51111 • Los Angeles, CA 90051-0100
Telephone: (213) 367-4211 • Cable address: DEWAPOLA



2011/2012 RUNOFF YEAR BISHOP CONE FLOWING WELL TOTALS

(ACRE-FEET)

WELL	2011								2012					
	APR	MAY	JUN	JUL	AUG	SEP	OCT	NOV	DEC	JAN	FEB	MAR	TOTAL	
F121	3	3	3	3	3	3	3	3	3	3	3	3	36	
F122	18	15	5	12	16	15	16	15	18	16	15	16	177	
F123	18	17	13	15	18	17	12	11	11	10	8	9	159	
F124	0	0	0	0	0	0	0	0	0	0	0	0	0	
F125	77	82	80	82	82	80	85	83	86	86	80	85	988	
F126	22	24	22	22	21	21	22	22	23	22	20	22	263	
F127	30	31	31	33	33	31	31	30	32	31	29	31	373	
F128	32	33	34	33	33	31	25	22	22	24	19	22	330	
F129	13	15	14	13	13	13	13	12	12	12	12	13	155	
F130	10	12	7	11	25	25	26	24	23	24	23	27	237	
F131	68	71	68	71	70	67	70	68	69	69	65	70	826	
F132	25	26	27	28	26	25	28	29	29	29	26	26	324	
F133	30	31	30	31	31	30	31	30	31	31	29	31	366	
F134	49	49	44	45	46	46	51	51	52	50	46	51	580	
F136	10	7	1	4	5	6	10	10	11	11	10	12	97	
TOTAL	405	416	379	403	422	410	423	410	422	418	385	418	4911	

6/14/2012

2011/2012 RUNOFF YEAR BISHOP CONE FLOWING WELL TOTALS
(ACRE-FEET)

WELL	2011				JUL	AUG	SEP	OCT	NOV	DEC	2012			TOTAL
	APR	MAY	JUN	JUL							JAN	FEB	MAR	
W140	208	213	204	209	208	199	76	0	0	0	0	0	0	1317
W371	101	101	69	34	101	98	103	101	103	103	103	97	102	1113
W406	207	216	107	73	212	202	3	0	0	0	0	0	0	1020
W407	164	170	85	120	170	164	3	0	0	0	0	0	0	876
W408	193	197	162	193	176	183	3	0	0	0	0	0	0	1107
W410	226	233	161	82	237	228	235	228	234	234	234	218	232	2548
W411	249	269	140	95	277	264	4	0	0	0	0	0	0	1298
W412	239	249	124	87	252	242	3	0	0	0	0	0	0	1196
TOTAL	1587	1648	1052	893	1633	1580	430	329	337	337	337	315	334	10475

6/14/2012

(BCA)
5/10/12
08:27

BISHOP CONE AUDIT

PAGE 1

FROM 3/01/12 TO 3/31/12

A C C O U N T S & S T A T I O N S		PERIOD	A C R E - F E E T MAR M-T-D	SINCE 4/01/11
BA502B SMITH & STICKELLS				
A-1 DRAIN				
3031	A-1 DRAIN PUMP PLANT # 1 S/O HALL DITC	.00	.00	.00
3032	A-1 DRAIN PUMP PLANT # 3 AT WELL # 140	.00	.00	783.00
*TOTALS	ACRES= 148 ALOT= 740 LEFT= 43-	.00	.00	783.00
BA302A BOOTHE				
HALL DITCH				
3006	HALL DITCH @ GOLF COURSE RETURN	2.00	2.00	136.00
B02A11	HALL DITCH @ BOOTHE	3.08	3.08	41.82
B02A21	STOCKWATER	3.08-	3.08-	41.82-
B02A32	OPERATIONS	2.00-	2.00-	3.00-
*TOTALS	ACRES= 47 ALOT= 235 LEFT= 102	.00	.00	133.00
BA302B BOOTHE				
BISHOP CREEK CANAL				
3161	BISHOP CREEK CANAL #16	40.00	40.00	693.00
3162	BISHOP CREEK CANAL #17	.00	.00	456.00
3164	BISHOP CREEK CANAL #20	35.00	35.00	658.00
3165	BISHOP CREEK CANAL #21	.00	.00	.00
B02B21	STOCKWATER @ #16	30.23-	30.23-	355.21-
B02B22	STOCKWATER @ #20	6.20-	6.20-	73.20-
B02B41	DITCH MAKE	.00	.00	.00
B02B31	OPERATIONS	38.57-	38.57-	304.72-
*TOTALS	ACRES= 120 ALOT= 600 LEFT= 473-	.00	.00	1073.87
BA311 J.W. CASHBAUGH, ET AL				
BISHOP CREEK CANAL				
3166	BISHOP CREEK CANAL #5	.00	.00	696.00
3022	BISHOP CREEK CANAL #5A	.00	.00	429.00
3167	BISHOP CREEK CANAL #9	.00	.00	469.00
3168	BISHOP CREEK CANAL #30	49.00	49.00	2478.00
B11201	STOCKWATER @ #30	30.67-	30.67-	359.58-
3022	CREDIT FOR TATUM RETURN @ #5A	.00	.00	429.00-
B11301	OPERATIONS	18.33-	18.33-	145.18-
*TOTALS	ACRES= 561 ALOT= 2805 LEFT= 333-	.00	.00	3138.24
BA313 BOYD & ONEY				
NORTH INDIAN DITCH				
3016	NORTH INDIAN ABOVE MUMY LANE #58E	470.00	470.00	6835.00
3017	WONACOTT A-2	71.00	71.00	988.00
3015	WONACOTT A-1	69.00-	69.00-	1082.00-
3054	WONACOTT A-3 RETURN	6.00-	6.00-	471.00-
3051	WONACOTT 58F	55.00-	55.00-	504.00-
3018	NORTH INDIAN B-2	347.00-	347.00-	4592.00-
B13401	NORTH INDIAN DITCH LOSS	54.00-	54.00-	655.58-
B13402	WONACOTT DITCH LOSS	10.00-	10.00-	42.00-
B13404	WONACOTT DITCH MAKE	.00	.00	30.00
B13301	OPERATIONS	.00	.00	.00
*TOTALS	ACRES= 84 ALOT= 420 LEFT= 86-	.00	.00	506.42

(BCA)
5/10/12
08:27

BISHOP CONE AUDIT

PAGE 2

FROM 3/01/12 TO 3/31/12

A C R E - F E E T

A C C O U N T S & S T A T I O N S

PERIOD

MAR
M-T-D

SINCE
4/01/11

BA324	DANIELS, ROSSI, HANNON			
	NORTH & SOUTH INDIAN DITCH			
3370	NORTH INDIAN DIVERSION W/O SUNLAND	.00	.00	40.00
3270	SOUTH INDIAN D-3	146.00	146.00	2986.00
3005	SOUTH INDIAN DITCH D-4	95.00-	95.00-	1406.00-
B244	DITCH LOSS	51.00-	51.00-	345.57-
B2442	DITCH MAKE	.00	.00	.00
B243	OPERATIONS	.00	.00	.00
*TOTALS	ACRES= 163 ALOT= 815 LEFT= 459-	.00	.00	1274.43
BA1478	INDIAN CREEK RANCH (BL-1478)			
	GEORGE & N. INDIAN DITCH			
3002	GEORGE DITCH WEST OF SUNLAND AVENUE	64.00	64.00	990.00
3068	GEORGE DITCH C-3	31.00-	31.00-	484.00-
BICR42	GEORGE DITCH LOSS	33.00-	33.00-	411.34-
BAICR4	DITCH MAKE	.00	.00	110.00
3264	NORTH INDIAN DITCH BELOW A-1 DRAIN B3A	335.00	335.00	2797.00
3370	NORTH INDIAN DIVERSION W/O SUNLAND	.00	.00	40.00-
3364	NORTH INDIAN DITCH W/O HWY 395	235.00-	235.00-	2427.00-
BICR43	NORTH INDIAN DITCH LOSS	100.00-	100.00-	387.58-
BAICR3	OPERATIONS	.00	.00	.00
*TOTALS	ACRES= 41 ALOT= 205 LEFT= 57	.00	.00	147.08
BA387A	GIACOMINI			
	NORTH INDIAN DITCH			
3043	NORTH INDIAN DITCH B-3	.00	.00	515.00
3011	WEST LINE L-2	.00	.00	179.00
B87A3	OPERATIONS	.00	.00	.00
*TOTALS	ACRES= 122 ALOT= 610 LEFT= 84-	.00	.00	694.00
BARECF	RECREATION FOREST SERVICE			
	KINGSLEY DITCH			
3023	KINGSLEY DITCH C-4	87.00	87.00	1266.00
3183	CEMETERY DITCH	28.00-	28.00-	465.00-
BRCF41	DITCH MAKE	.00	.00	4.00
BRCF42	DITCH LOSS	59.00-	59.00-	237.66-
*TOTALS	ACRES= 43 ALOT= 215 LEFT= 352-	.00	.00	567.34
BA339	DOHNEL			
	KINGSLEY DITCH			
3170	KINGSLEY DITCH C-1	16.00	16.00	577.00
B39201	STOCKWATER @ C-1	16.00-	16.00-	282.21-
B39301	OPERATIONS	.00	.00	2.28-
*TOTALS	ACRES= 39 ALOT= 195 LEFT= 97-	.00	.00	292.51
BA393	CABALLERO			
	KINGSLEY DITCH			
3061	KINGSLEY DITCH PUMP PLANT	.00	.00	41.00
3171	BISHOP CREEK DITCH # 11	.00	.00	58.00
BA933	OPERATIONS @ #11	.00	.00	.00
*TOTALS	ACRES= 18 ALOT= 90 LEFT= 9-	.00	.00	99.00

(BCA)
5/10/12
08:27

BISHOP CONE AUDIT

PAGE 3

FROM 3/01/12 TO 3/31/12

A C C O U N T S & S T A T I O N S		PERIOD	A C R E - F E E T MAR M-T-D	SINCE 4/01/11
BA362D JJ TATUM, LJ TATUM DAIRY DITCH				
3388	INDIAN SOUTH RETURN ON SEE-VEE LANE	1.00	1.00	820.00
3389	INDIAN MIDDLE RETURN ON SEE-VEE LANE	.00	.00	158.00
3390	INDIAN NORTH RETURN ON SEE-VEE LANE	9.00	9.00	337.00
B62D21	DAIRY STOCKWATER	10.00-	10.00-	229.14-
B62D31	OPERATIONS DAIRY DITCH	.00	.00	422.64-
*TOTALS	ACRES= 182 ALOT= 578 LEFT= 85-	.00	.00	663.22
BA304 ANDREW & DAN BOYD NEWLON DITCH				
3026	NEWLON DITCH BOYD PUMP PLANT	7.00	7.00	249.00
*TOTALS	ACRES= 48 ALOT= 240 LEFT= 9-	7.00	7.00	249.00
BA500 TALBOT GEORGE & S. INDIAN DITCH				
3012	GEORGE DITCH C-1	35.00	35.00	962.00
3002	GEORGE DITCH WEST OF SUNLAND AVENUE	64.00-	64.00-	990.00-
B24B41	BUHS STOCKWATER	.00	.00	18.38-
B24B44	DITCH LOSS	.00	.00	11.24-
B24B04	DITCH MAKE	29.00	29.00	252.00
3365	PARK WEST RETURN S/O A-DRAIN	5.00	5.00	112.00
3047	4 X - 58D	337.00	337.00	4005.00
3366	SOUTH INDIAN DITCH DIVERSION # 1 N/O S	.00	.00	49.00
3367	SOUTH INDIAN DITCH DIVERSION # 2 N/O S	1.00	1.00	518.00
W408	WELL # 408	.00	.00	1107.00
3046	SOUTH INDIAN RETURN AT A-1 DRAIN	187.00-	187.00-	1793.00-
3270	SOUTH INDIAN D-3	146.00-	146.00-	2986.00-
B004	DITCH LOSS	10.00-	10.00-	312.57-
B0040	DITCH MAKE	.00	.00	.00
B50B31	OPERATIONS	.00	.00	.00
*TOTALS	ACRES= 171 ALOT= 890 LEFT= 3-	.00	.00	893.81
BA397 GIACOMINI BISHOP CREEK CANAL				
3172	BISHOP CREEK DITCH # 16-A	.00	.00	.00
3163	BISHOP CREEK DITCH # 19	.00	.00	826.00
3173	BISHOP CREEK DITCH # 19-A	.00	.00	.00
3174	BISHOP CREEK DITCH # 22	.00	.00	554.00
3019	BISHOP CREEK CANAL DIVERSION # 24	50.00	50.00	1081.00
3020	BISHOP CREEK CANAL DIVERSION # 25	229.00	229.00	527.00
3391	BISHOP CREEK CANAL DIVERSION 26A	.00	.00	706.00
3024	BISHOP CREEK CANAL DIVERSION # 29	63.00	63.00	538.00
3392	FORD RAWSON-DIV 1A	.00	.00	.00
B9721	STOCKWATER @ #29	27.87-	27.87-	243.37-
B9722	BOOTHE STOCKWATER @ #19	.00	.00	68.73-
B9723	STOCKWATER @ #19 & #24	28.46-	28.46-	283.78-
B9731	OPERATIONS	285.67-	285.67-	438.13-
*TOTALS	ACRES= 482 ALOT= 2410 LEFT= 787-	.00	.00	3197.99

(BCA)
5/10/12
08:27

BISHOP CONE AUDIT

PAGE 4

FROM 3/01/12 TO 3/31/12

A C C O U N T S & S T A T I O N S		A C R E - F E E T		
		PERIOD	MAR M-T-D	SINCE 4/01/11
BA361A ST RANCH				
NORTH FORK BISHOP CREEK				
3036	NORTH FORK BISHOP CREEK I-1	72.00	72.00	1358.00
3004	NORTH FORK BISHOP CREEK I-2	.00	.00	1358.00
3042	TATUM RETURN AT HIGHWAY 6	.00	.00	39.00-
3039	TATUM RETURN AT BISHOP CREEK CANAL	64.00-	64.00-	694.00-
3022	BISHOP CREEK CANAL #5A	.00	.00	429.00-
B61A21	STOCKWATER @ I-1	.00	.00	208.90-
3316	WELL #406	48.00	48.00	1018.00
B61A41	DITCH MAKE	56.00-	56.00-	20.00-
B61A31	OPERATIONS	.00	.00	137.90-
*TOTALS ACRES= 262 ALOT= 1005 LEFT= 1200-		.00	.00	2205.20
BA361B ST RANCH				
MATLICK DITCH				
3009	MATLICK DITCH F-10	86.00	86.00	2200.00
3040	MATLICK DITCH F-13 N	252.00	252.00	2689.00
3008	MATLICK DITCH F-13 E	54.00	54.00	771.00
3007	MATLICK DITCH F-14	4.00	4.00	164.00
3035	MATLICK DITCH #154	74.00	74.00	1638.00
3154	TATUM RETURN G-2	.00	.00	146.00-
3037	MATLICK DITCH #63A	71.00-	71.00-	856.00-
3038	TATUM RETURN H-1	2.00-	2.00-	1096.00-
3003	MATLICK DITCH RETURN @ B-1 DRAIN	57.00-	57.00-	503.00-
3010	MATLICK RETURN @ C DRAIN	244.00-	244.00-	1546.00-
B61B41	DITCH LOSS #154 TO RETURN @ B1	17.00-	17.00-	297.36-
B61B42	DITCH MAKE F-10 TO RETURN @ C DRAIN	.00	.00	.00
B61B21	SPENCER STOCKWATER	15.50-	15.50-	183.00-
B61B22	STOCKWATER @ F-10	30.69-	30.69-	362.34-
B61B31	OPERATIONS	32.81-	32.81-	206.14-
*TOTALS ACRES= 412 ALOT= 2365 LEFT= 98		.00	.00	2266.16
BA502A SMITH & STICKELLS				
HALL DITCH				
3027	HALL DITCH PUMP PLANT # 2 @ DON TATUM	2.00	2.00	189.00
3028	HALL DITCH PUMP PLANT # 4 AT DON TATUM	.00	.00	744.00
*TOTALS ACRES= 219 ALOT= 1095 LEFT= 162		2.00	2.00	933.00
BARECA RECREATION FARMERS PONDS				
BISHOP CREEK CANAL				
3155	BISHOP CREEK CANAL #5B	.00	.00	512.00
BRCA31	OPERATIONS @ #5B	.00	.00	42.00-
*TOTALS		.00	.00	470.00
BARECC RECREATION SADDLE CLUB				
BISHOP CREEK CANAL				
3021	BISHOP CREEK CANAL #67	.00	.00	88.00
BRECC3	OPERATIONS	.00	.00	.00
*TOTALS ACRES= 13 ALOT= 65 LEFT= 23-		.00	.00	88.00

(BCA)
5/10/12
08:27

BISHOP CONE AUDIT

PAGE 5

FROM 3/01/12 TO 3/31/12

A C R E - F E E T

A C C O U N T S & S T A T I O N S	PERIOD	MAR M-T-D	SINCE 4/01/11
BARECD RECREATION BUCKLEY PONDS			
SOUTH FORK BISHOP CREEK			
3194 S FORK BISHOP CR BELOW BISHOP CR CANAL	466.00	466.00	5228.00
3193 SANDERS POND RETURN	136.00-	136.00-	2398.00-
3066 RAWSON POND # 3 RETURN TO OWENS RIVER	61.00-	61.00-	478.00-
BRCD31 OPERATIONS	.00	.00	.00
*TOTALS	269.00	269.00	2352.00
BA338 YRIBARREN			
FORD-RAWSON CANAL & KEOUGH			
2003 FORD RAWSON CANAL DIVERSION #2	47.00	47.00	994.00
2024 FORD RAWSON CANAL DIVERSION #3	.00	.00	4226.00
2004 FORD RAWSON CANAL DIVERSION #7	.00	.00	1065.00-
2043 YRIBARREN RETURN #2	.00	.00	.00
B38402 FORD RAWSON CANAL LOSS	.00	.00	714.49-
B38201 STOCKWATER @ #2	30.69-	30.69-	362.34-
B38401 FORD RAWSON CANAL DITCH MAKE	.00	.00	.00
3368 RAWSON & KEOUGH DITCH E/O HWY 395	75.00	75.00	515.00
3369 RAWSON & KEOUGH DITCH RETURN AT A-DRAI	56.00-	56.00-	380.00-
B38202 CASHBAUGH STOCKWATER	11.03-	11.03-	97.86-
B38403 KEOUGH DITCH LOSS	6.29-	6.29-	30.04-
B38301 OPERATIONS	17.99-	17.99-	73.88-
*TOTALS ACRES= 427 ALOT= 2135 LEFT= 876-	.00	.00	3011.39
BAOPRA OPERATION FORD-RAWSON CANAL			
FORD-RAWSON CANAL			
2026 FORD RAWSON CANAL BELOW BCC	.00	.00	.00
2024 FORD RAWSON CANAL DIVERSION #3	.00	.00	.00
BOPA31 OPERATIONS	.00	.00	.00
*TOTALS	.00	.00	.00
BAOPRB OPERATIONS A-DRAIN			
A-DRAIN			
2086 A-DRAIN DIVERSION TO ARKANSAS FLATS	.00	.00	.00
BOPB31 OPERATIONS	.00	.00	.00
*TOTALS	.00	.00	.00
RV361B ST RANCH			
HORTON CREEK			
3102 HORTON CREEK E-7	.00	.00	682.00
R61B31 OPERATIONS	.00	.00	.00
*TOTALS ACRES= 105 ALOT= 525 LEFT= 157-	.00	.00	682.00
RVRECA RECREATION MILL POND			
MCGEE CREEK			
3185 MCGEE CREEK @ ABELOUR RANCH	220.00	220.00	4810.00
3235 MILL POND RETURN	121.00-	121.00-	1827.00-
RRCA41 DITCH MAKE	.00	.00	.00
*TOTALS	99.00	99.00	2983.00

(BCA)
5/10/12
08:27

BISHOP CONE AUDIT

PAGE 6

FROM 3/01/12 TO 3/31/12

A C R E - F E E T

A C C O U N T S & S T A T I O N S	PERIOD	MAR M-T-D	SINCE 4/01/11
LAE&MH FIVE BRIDGES RECHARGE BISHOP CREEK CANAL			
3242 BISHOP CREEK CANAL DIVERSION #2	.00	.00	389.00
LEMGE5 MITIGATION WATER @ DIVERSION #4	.00	.00	.00
3317 BISHOP CREEK CANAL DIVERSION #6	7.00	7.00	382.00
LEMH2 STOCKWATER @ DIVERSION #2 & #6	7.00-	7.00-	305.00-
LEMH3 OPERATIONS	.00	.00	466.00-
*TOTALS	.00	.00	.00
BA353 HADELER & MILORADICH WONACOTT & SMITH DITCH			
3015 WONACOTT A-1	69.00	69.00	1082.00
3053 TOMMY SMITH DITCH # 162-A	1.00	1.00	112.00
3017 WONACOTT A-2	71.00-	71.00-	988.00-
BA3534 WONACOTT DITCH LOSS	1.00	1.00	11.04-
BA534 DITCH MAKE	.00	.00	10.00
BA3533 OPERATIONS	.00	.00	.00
*TOTALS ACRES= 38 ALOT= 190 LEFT= 14-	.00	.00	204.96
BA005A ONEY OTEEY DITCH			
3049 # 161 OTEY	60.00	60.00	1309.00
3377 OTEY DITCH RETURN AT MATLICK DITCH	59.00-	59.00-	1252.00-
B05A4 DITCH LOSS	1.00-	1.00-	18.33-
B05A42 DITCH MAKE	.00	.00	.00
*TOTALS ACRES= 13 ALOT= 65 LEFT= 26	.00	.00	38.67
BA005B SAFSTROM MATLICK DITCH			
3378 OTEY DITCH DIVERSION ABOVE MATLICK DIT	.00	.00	69.00
B05B4 DITCH LOSS	.00	.00	.00
*TOTALS ACRES= 20 ALOT= 100 LEFT= 31	.00	.00	69.00
BA006A BARTON MATLICK DITCH			
3064 MATLICK DITCH AT INTAKE # 61	195.00	195.00	4017.00
3377 OTEY DITCH RETURN AT MATLICK DITCH	59.00	59.00	1252.00
3412 MATLICK DITCH WEST OF MCLAREN	120.00-	120.00-	2114.00-
3378 OTEY DITCH DIVERSION ABOVE MATLICK DIT	.00	.00	69.00-
B06A1 PRIVATE DIVERSION	72.62-	72.62-	1559.96-
B06A4 DITCH LOSS	61.38-	61.38-	1456.17-
*TOTALS ACRES= 14 ALOT= 70 LEFT= 0	.00	.00	69.87
BA1479 HIDDEN CREEKS RANCH SOUTH INDIAN DITCH			
3025 SOUTH INDIAN DITCH DIVERSION # 3	.00	.00	29.00
B14793 OPERATIONS	.00	.00	.00
*TOTALS ACRES= 27 ALOT= 135 LEFT= 106	.00	.00	29.00

(BCA)
5/10/12
08:27

BISHOP CONE AUDIT

PAGE 7

FROM 3/01/12 TO 3/31/12

ACRE - FEET

ACCOUNTS & STATIONS	PERIOD	MAR M-T-D	SINCE 4/01/11
BA392 LACEY LIVESTOCK			
YOUNG & MATLICK DITCHES			
3387 MATLICK DITCH TO THE NORTH	49.00	49.00	1330.00
3398 MATLICK DITCH #1	325.00	325.00	4724.00
BA9242 DITCH LOSS	.00	.00	119.45-
3399 REINHACKLE #1	87.00	87.00	1316.00
3400 YOUNG DITCH #1	3.00	3.00	251.00
3401 YOUNG DITCH #2	87.00-	87.00-	890.00-
3406 C-DRAIN AT INTAKE	346.00-	346.00-	4423.00-
BA921 MATLICK DITCH F-10	86.00-	86.00-	2200.00-
BA924 DITCH MAKE	55.00	55.00	350.00
BA923 OPERATIONS	.00	.00	.00
*TOTALS ACRES= 140 ALOT= 700 LEFT= 361	.00	.00	338.55
BA301 AUBREY & MOXLEY			
NELLIGAN & YOUNG DITCHES			
3396 NELLIGAN DIV. #1	138.00	138.00	2421.00
3397 NELLIGAN BELOW DIV. #1	97.00	97.00	1473.00
3401 YOUNG DITCH #2	87.00	87.00	890.00
3050 HOLLAND # 63-B	44.00-	44.00-	521.00-
3404 NELLIGAN DITCH #2	176.00-	176.00-	2765.00-
3402 YOUNG DITCH #3	83.00-	83.00-	690.00-
3407 YOUNG DITCH # 4	.00	.00	46.00-
BA014 DITCH LOSS	19.00-	19.00-	151.51-
BA0144 DITCH MAKE	.00	.00	.00
BA013 OPERATIONS	.00	.00	.00
*TOTALS ACRES= 99 ALOT= 495 LEFT= 115-	.00	.00	610.49
BA335 PARTRIDGE & JOHNSON			
YOUNG DITCH			
3402 YOUNG DITCH #3	83.00	83.00	690.00
3407 YOUNG DITCH # 4	.00	.00	46.00
3403 YOUNG DITCH RETURN TO NELLIGAN	77.00-	77.00-	519.00-
BA354 DITCH LOSS	6.00-	6.00-	52.84-
BA353 OPERATIONS	.00	.00	.00
*TOTALS ACRES= 30 ALOT= 150 LEFT= 14-	.00	.00	164.16
BCCL BISHOP CONE CONVEYANCE LOSSES			
BCCL1 BA313 DITCH LOSS N INDIAN	54.00	54.00	655.58
BCCL2 BA313 DITCH LOSS WONACOTT	10.00	10.00	42.00
BCCL3 BA324 DITCH LOSS N & S INDIAN	51.00	51.00	344.55
BCCL4 BA1478 DITCH LOSS GEORGE	33.00	33.00	411.34
BCCL5 BA1478 DITCH LOSS N INDIAN	100.00	100.00	387.58
BCCL6 BARECF DITCH LOSS KINGSLEY	59.00	59.00	237.66
BCCL7 BA500 DITCH LOSS GEORGE	.00	.00	11.24
BCCL8 BA500 DITCH LOSS S INDIAN	10.00	10.00	312.57
BCCL9 BA361B DITCH LOSS MATLICK	17.00	17.00	297.36
BCCL10 BA338 DITCH LOSS FORD RAWSON	.00	.00	714.49
BCCL11 BA353 DITCH LOSS WONACOTT	1.00-	1.00-	11.04
BCCL12 BA005A DITCH LOSS OTEY	1.00	1.00	18.33
BCCL13 BA301 DITCH LOSS NELLIGAN	19.00	19.00	151.51

(BCA)
5/10/12
08:27

BISHOP CONE AUDIT

PAGE 8

FROM 3/01/12 TO 3/31/12

A C C O U N T S & S T A T I O N S		PERIOD	A C R E - F E E T	
			MAR M-T-D	SINCE 4/01/11
BCCL14	BA335 DITCH LOSS YOUNG	6.00	6.00	52.84
BCCL15	TOTAL DITCH LOSS	359.00-	359.00-	3643.32-
*TOTALS		.00	.00	4.77
AREA SUMMARY		IRG	9.00	9.00 23768.02
		SW	247.42	247.42 3474.86
		OPER	395.37	395.37 2241.87
		E&M	.00	.00 .00
		GWRC	.00	.00 .00
		REC	368.00	368.00 6460.34
		IND	.00	.00 .00
		DOM	.00	.00 .00
		LORP	.00	.00 .00
TOTAL WATER USE		1019.79	1019.79	35945.09

TOTAL IRG AC 4088

TOTAL ALOT 20143

DUTY TO DATE 5.8 AF/AC